

**49-16-2576 Trapsnake™  
6' Toilet Auger**

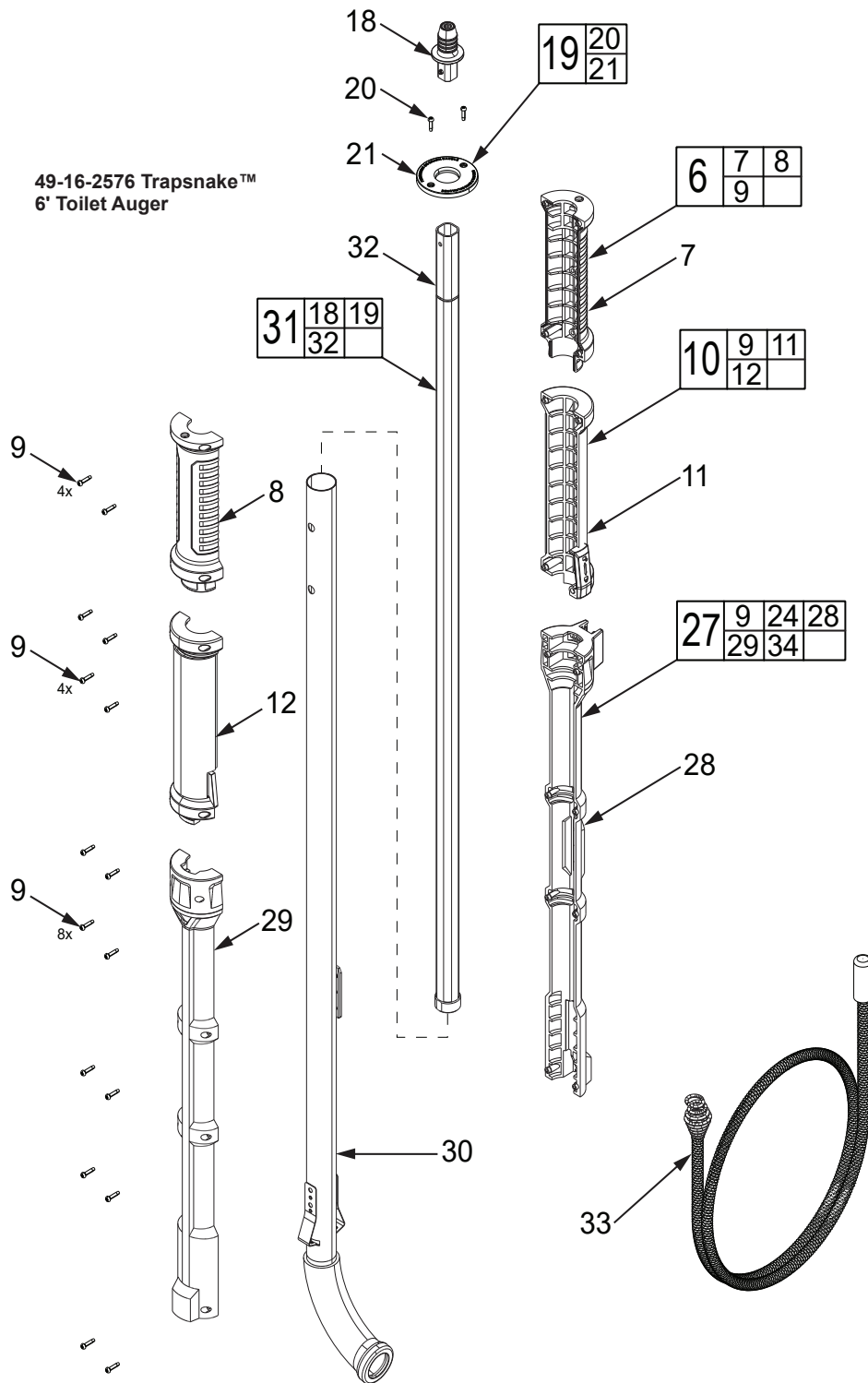


FIG.	PART NO.	DESCRIPTION OF PART	NO. REQ.
6	31-44-1155	Upper Handle Assembly	(1)
7	-----	Upper Handle Cover	(1)
8	-----	Upper Handle Support	(1)
9	06-82-1080	M3 T-10 Screw	(16)
10	31-44-1145	Clamp Handle Assembly	(1)
11	-----	Clamp Handle Cover	(1)
12	-----	Clamp Handle Support	(1)
18	-----	Auger Socket	(1)
19	31-12-0245	Handle Cap Assembly	(1)
20	05-81-0195	M3 Phillips Screw	(2)
21	-----	Handle Cap	(1)
24	12-20-2509	Auger Service Nameplate (not shown)	(1)
27	31-44-1075	Lower Handle Assembly	(1)
28	-----	Lower Handle Cover	(1)
29	-----	Lower Handle Support	(1)

FIG.	PART NO.	DESCRIPTION OF PART	NO. REQ.
30	45-76-0145	Outer Tube Assembly	(1)
31	45-76-0135	Inner Tube Assembly	(1)
32	-----	Inner Tube	(1)
33	48-53-2576	6' Retriever Bulb Head Cable	(1)
34	10-20-2528	Toilet Auger Warning Label (not shown)	(1)

**FIG. 24, 34 NOTES**  
A clean, dry surface is essential for proper performance for any adhesive system. The area intended for application of any adhesive label or nameplate must be prepared by cleaning with isopropyl alcohol. The solvent is to be applied with a clean, lint free applicator and the surface allowed to dry before applying the label or nameplate.