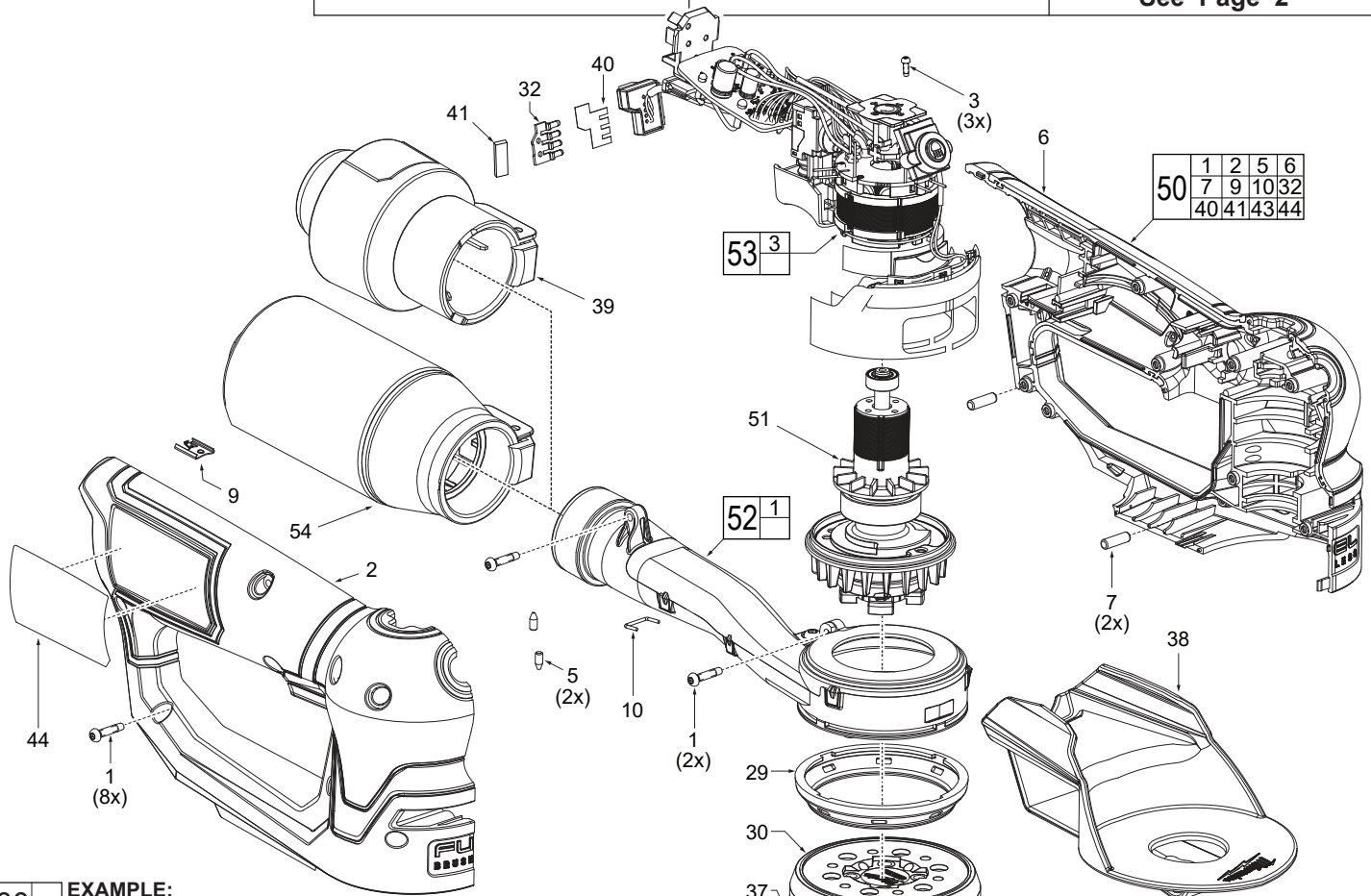




SERVICE PARTS LIST

BULLETIN NO.
PN0002431

SPECIFY CATALOG NO. AND SERIAL NO. WHEN ORDERING PARTS		REVISED BULLETIN	DATE
M12 FUEL™ 3" Random Orbital Detail Sander			July 2024
CATALOG NO.	2535-20	SERIAL NO.	P47A
		WIRING INSTRUCTION See Page 2	



EXAMPLE:
Component Parts (Small #) Are Included
When Ordering The Assembly (Large #).

FIG.	PART NO.	DESCRIPTION OF PART	NO. REQ.
1	06-82-1080	M3 x 14mm Pan Hd. T-10 Blk Screw	(10)
2	-----	Right Housing Halve - Cover	(1)
3	06-82-0047	M2 x 6mm Pan Hd. Philips Blk Screw	(3)
5	45-30-0047	Rubber Slug	(2)
6	-----	Left Housing Halve - Support	(1)
7	44-94-0083	Rubber Rod	(2)
9	42-70-0058	Housing Connection Clip	(1)
10	42-70-0304	Wire Clip	(1)
11	05-78-0038	M4 x .7 Pan Hd. Screw	(4)
29	44-52-0974	Rubber Pad Brake	(1)
30	-----	3" Backing Pad Assembly*	(1)
32	-----	Light Pipe	(1)
33	-----	3" Interface Sponge Pad*	(1)
34	-----	3" Pad Saver*	(1)
35	-----	3" 80-Grit Mesh Sanding Disc*	(1)
36	-----	3" 120-Grit Mesh Sanding Disc*	(1)
37	-----	3" 180-Grit Mesh Sanding Disc*	(1)
38	43-72-2535	Belt Clip Holster	(1)
39	43-76-0135	Universal Vacuum Adapter	(1)
40	-----	Light Pipe Label	(1)
41	-----	Sealing Foam	(1)
43	-----	Fuel Gauge Label (not shown)	(1)
44	12-20-0639	Service Nameplate	(1)
50	14-38-2141	Housing Service Kit	(1)
51	14-50-0016	Rotor Assembly	(1)
52	14-46-0333	Dust Extraction Shroud Assembly	(1)
53	14-20-0403	Electronics Assembly	(1)
54	42-16-0578	Dust Bag Assembly	(1)

FIG. NOTES

44 A clean, dry surface is essential for proper performance for any adhesive system. Area intended for application of any adhesive label or nameplate must be prepared by cleaning with isopropyl alcohol. The solvent is to be applied with a clean, lint free applicator and the surface allowed to dry before applying the label or nameplate.

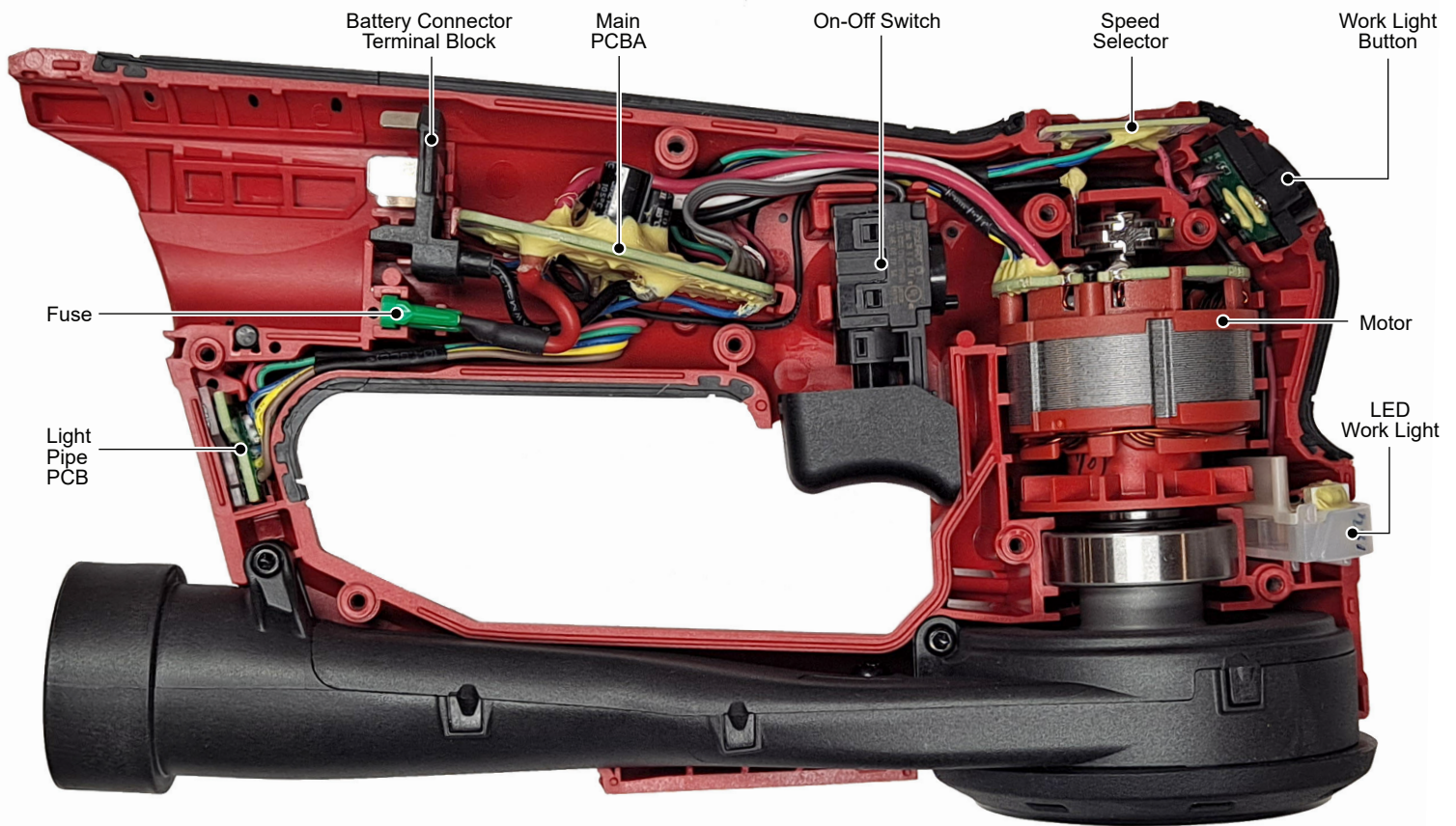
SCREW TORQUE SPECIFICATIONS

FIG.	PART NO.	WHERE USED	SEAT TORQUE	
			(kgf-cm)	(lb-in)
1	06-82-1080	Handle Housing	9±1	8±1
1	06-82-1080	Dust Extraction Shroud	7±1	6±1
3	06-82-0047	PCBA	2±.5	2±.4
11	05-78-0038	Backing Pad/DE Cover	14±2	12±2

*See page 2 for a list of 3" backing pad, sponge pad, pad saver, and sanding disc kits

MILWAUKEE TOOL • www.milwaukeetool.com
13135 W. LISBON RD., BROOKFIELD, WI 53005
Drwg. 1

WIRING DIAGRAM



As an aid to reassembly, take notice of wire routing and position in wire guides and traps while dismantling tool.

Be sure that all components of the electronics kit are seated firmly and squarely in housing recesses.

Avoid pinched wires, be sure all wires and sleeves are pressed completely down in wire guides and traps.

Prior to installing housing cover onto handle support, be sure that there are no interferences.

Be sure to check for proper functionality of switches and buttons after housing halves have been secured.

Install battery and verify proper operation of tool.

3" Pads and Mesh Sanding Disc Kits

PART NO.	DESCRIPTION
44-52-1007	3" Backing Pad
48-80-6401	3" Pad Saver - 3-Pk.
48-80-6402	3" Interface Sponge Pad
48-80-6080	3" 80-Grit Powergrid™ Mesh Sanding Discs - 12-pk.*
48-80-6120	3" 120-Grit Powergrid™ Mesh Sanding Discs - 12-pk.*
48-80-6150	3" 150-Grit Powergrid™ Mesh Sanding Discs - 12-pk.*
48-80-6180	3" 180-Grit Powergrid™ Mesh Sanding Discs - 12-pk.*
48-80-6220	3" 220-Grit Powergrid™ Mesh Sanding Discs - 12-pk.*
48-80-6320	3" 320-Grit Powergrid™ Mesh Sanding Discs - 12-pk.*
48-80-6400	3" 400-Grit Powergrid™ Mesh Sanding Discs - 12-pk.*
48-80-6405	3" 80/120/180-Grit Powergrid™ Mesh Sanding Discs Assorted Kit - 12-pk.*
48-80-6406	3" 80/120/180-Grit Powergrid™ Mesh Sanding Discs Assorted Kit - 36-pk.**

*Includes (1) 3" Pad Saver

**Includes (3) 3" Pad Saver

