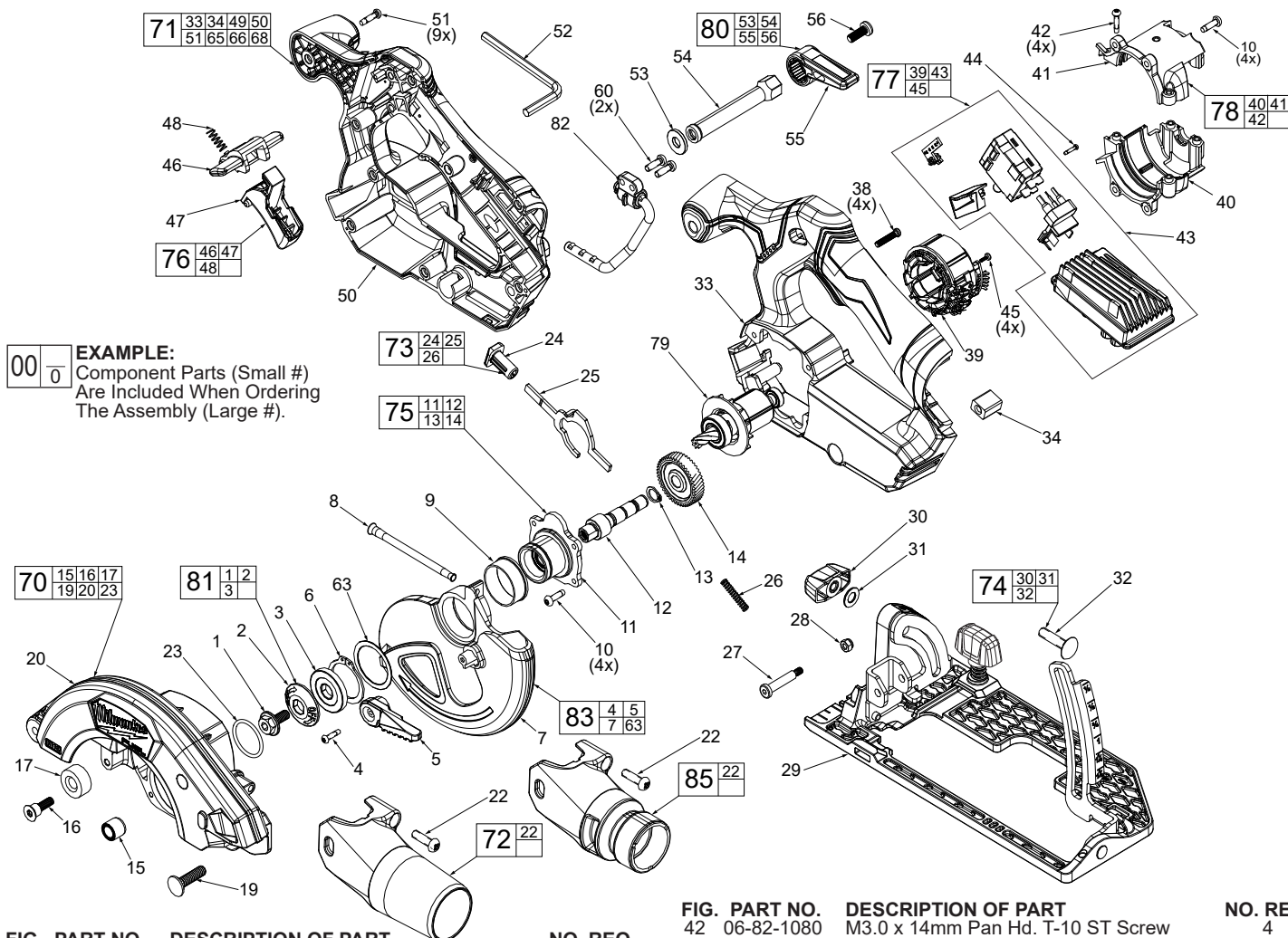




SERVICE PARTS LIST

BULLETIN NO.
54-40-2535

SPECIFY CATALOG NO. AND SERIAL NO. WHEN ORDERING PARTS		REVISED BULLETIN	DATE
M12 FUEL™ 5-3/8" (136mm) Circular Saw			July 2024
CATALOG NO.	2521-20	STARTING SERIAL NO.	P32A
		WIRING INSTRUCTION See Page Three	



EXAMPLE:
Component Parts (Small #)
Are Included When Ordering
The Assembly (Large #).

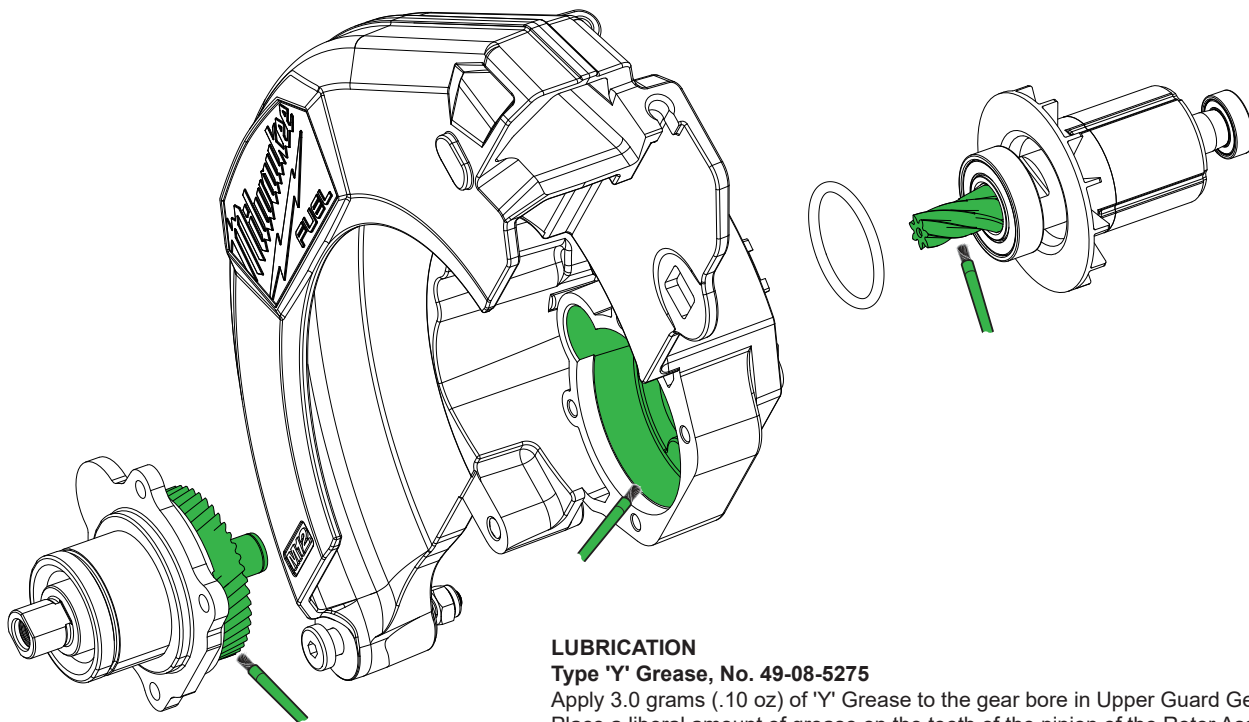
FIG.	PART NO.	DESCRIPTION OF PART	NO. REQ.
1	-----	Flange Bolt	1
2	-----	30mm Outer Flange	1
3	-----	30mm Inner Flange	1
4	06-82-1087	M3 x 12mm PH T-10 Screw	1
5	-----	Lower Guard Long Lever	1
6	34-60-0631	Retaining Ring	1
7	-----	Lower Guard	1
8	40-50-1710	Spring	1
9	45-14-0370	Lower Guard Sleeve	1
10	06-82-5285	6-32 x 1/2 Pan Hd. TapTite T-15 Screw	8
11	-----	Hub	1
12	-----	Output Shaft	1
13	34-80-1120	Retaining Ring	1
14	-----	Output Gear	1
15	-----	Bushing	1
16	45-04-0485	Bumper Screw	1
17	42-38-0224	Rubber Bumper	1
19	06-10-0455	Carriage Bolt	1
20	-----	Upper Guard Cover	1
22	05-83-0011	M5 x 17mm Philips Machine Screw	1
23	34-40-5262	O-Ring	1
24	-----	Spindle Lock Button	1
25	-----	Spindle Lock Plate	1
26	40-50-1615	Spindle Lock Spring	1
27	06-04-0010	5.5 x 25 Shoulder Bolt	1
28	05-55-0101	M4 Hex Nut w/Nylon Insert	1
29	26-06-0120	Baseplate Assembly	1
30	43-98-0082	Bevel Knob	1
31	45-88-1560	Washer	1
32	06-10-0150	M6 x 25mm Carriage Bolt	1
33	-----	Handle Support	1
34	44-86-0029	Retention Rubber	1
38	05-83-0012	M3.5 x 19mm Pan Hd. T-15 Screw	4
39	-----	Stator	1
40	-----	Motor Housing Support	1
41	-----	Motor Housing Cover	1

FIG.	PART NO.	DESCRIPTION OF PART	NO. REQ.
42	06-82-1080	M3.0 x 14mm Pan Hd. T-10 ST Screw	4
43	-----	PCBA	1
44	45-88-0229	M2 x 10mm Pan Hd. T-6 Screw	1
45	05-88-0106	M2 x 5.5mm Pan Hd. T-8 Screw	4
46	-----	Lockout Switch	1
47	-----	Trigger	1
48	40-50-1760	Spring	1
49	10-22-0656	Fuel Gauge Label (not shown)	1
50	-----	Handle Cover	1
51	05-81-5383	M3.5 x 14mm Pan Hd. T-10 Screw	9
52	49-96-0600	3/16" Hex Key	1
53	05-90-0068	Flat Washer	1
54	-----	Plunge Shaft	1
55	44-10-0645	Depth Lever w/Insert	1
56	05-83-0013	M5 x 12mm Philips Screw	1
60	06-82-0134	M4 x 12.5mm Pan Hd. T-20 Screw	2
63	-----	Lower Guard Washer	1
65	10-22-0639	Warning Label (not shown)	1
66	10-22-0638	Warning Label (not shown)	1
68	12-20-1014	Service Nameplate (not shown)	1
70	14-30-0255	Gearcase Kit	1
71	14-34-0302	Handles Kit	1
72	14-46-0522	Dust Tube Kit	1
73	14-46-0523	Spindle Lock Kit	1
74	14-46-0521	Bevel Angle Adjust Kit	1
75	14-29-0119	Output Gear Assembly	1
76	14-46-0527	Trigger Kit	1
77	14-20-1012	PCBA & Stator Assembly	1
78	14-38-0098	Motor Mount Housing Kit	1
79	14-46-0547	Rotor Assembly	1
80	14-46-0548	Plunge Lever Kit	1
81	14-46-0549	Blade Retention Kit	1
82	14-36-0346	Rafter Hook Assembly	1
83	14-32-0125	Lower Guard Assembly	1
84	49-22-2530	Rip Fence (Accessory - not shown)	1
85	14-46-0617	DEK26 Dust Tube Kit (Accessory)	1

MILWAUKEE TOOL • www.milwaukeetool.com
13135 W. LISBON RD., BROOKFIELD, WI 53005

Drwg. 1

SCREW TORQUE SPECIFICATIONS				
FIG.	PART NO.	WHERE USED	SEAT TORQUE	
			(kgf-cm)	(lb-in)
10	06-82-5285	Hub and Motor Housing	18±2	16±2
16	45-04-0485	Rubber Bumper	35±5	30±4
22	45-04-0485	Vac Port	20±3	17±1
27	06-04-0010	Gearcase	20±3	17±1
38	05-83-0012	Handle Support	10±1	9±1
42	06-82-1080	Motor Housing	10±1	9±1
44	45-88-0229	Worklight	2±0.5	2±0.5
45	05-88-0106	Hall Board	2.7±0.3	2.3±0.3
51	05-81-5383	Handle Cover	10±1	9±1
56	-----	Depth Lever	28±2.5	24±2
60	06-82-0134	Rafter Hook	35±5	30±4



LUBRICATION

Type 'Y' Grease, No. 49-08-5275

Apply 3.0 grams (.10 oz) of 'Y' Grease to the gear bore in Upper Guard Gearcase. Place a liberal amount of grease on the teeth of the pinion of the Rotor Assembly. Place a liberal amount of grease on all of the teeth of the output gear in the Spindle Hub Assembly. Coat the face of output gear and the end of output shaft with grease. Total amount of grease used is approximately 6.0 grams (.20 oz).

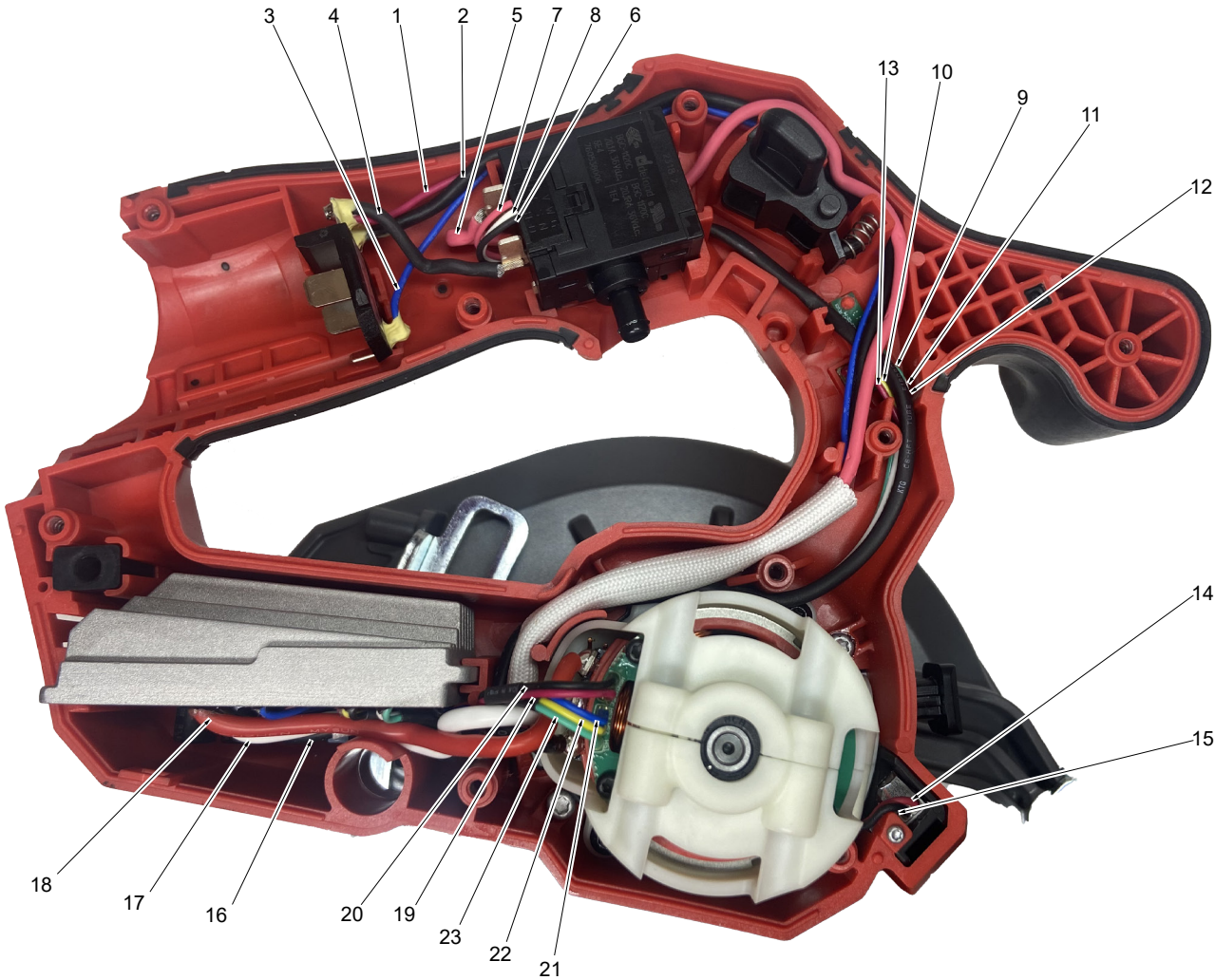
When servicing, remove 90-95% of the existing grease prior to installing Type 'Y'. Original grease may be similar in color but not compatible with 'Y'.

As an aid to reassembly, take notice of wire routing and position in wire guides and traps while dismantling tool.

Be sure that all components of the electronics kit are seated firmly and squarely in the housing recesses.

Avoid pinched wires, be sure that all wires and sleeves are pressed completely down in wire guides and traps.

Prior to securing the housing cover onto the housing support, be sure that there are no interferences.



WIRING SPECIFICATIONS		
Wire No.	Wire Color	Destination
1	Red	From Switch to Control Board
2	Black	From Terminal to Control Board
3	Blue	From Terminal to Control Board
4	Black	From Terminal to Switch
5	Red	From Switch to Control Board
6	Black	From Switch to Control Board
7	Red	From Switch to Control Board
8	White	From Switch to Control Board
9	Green	From Fuel Gauge Board to Control Board
10	Yellow	From Fuel Gauge Board to Control Board
11	White	From Fuel Gauge Board to Control Board
12	Black	From Fuel Gauge Board to Control Board

WIRING SPECIFICATIONS		
Wire No.	Wire Color	Destination
13	Red	From Fuel Gauge Board to Control Board
14	Red	From LED to Control Board
15	Black	From LED to Control Board
16	Black	From Control Board to Stator
17	White	From Control Board to Stator
18	Red	From Control Board to Stator
19	Red	From Hall Board to Control Board
20	Black	From Hall Board to Control Board
21	Blue	From Hall Board to Control Board
22	Yellow	From Hall Board to Control Board
23	Green	From Hall Board to Control Board