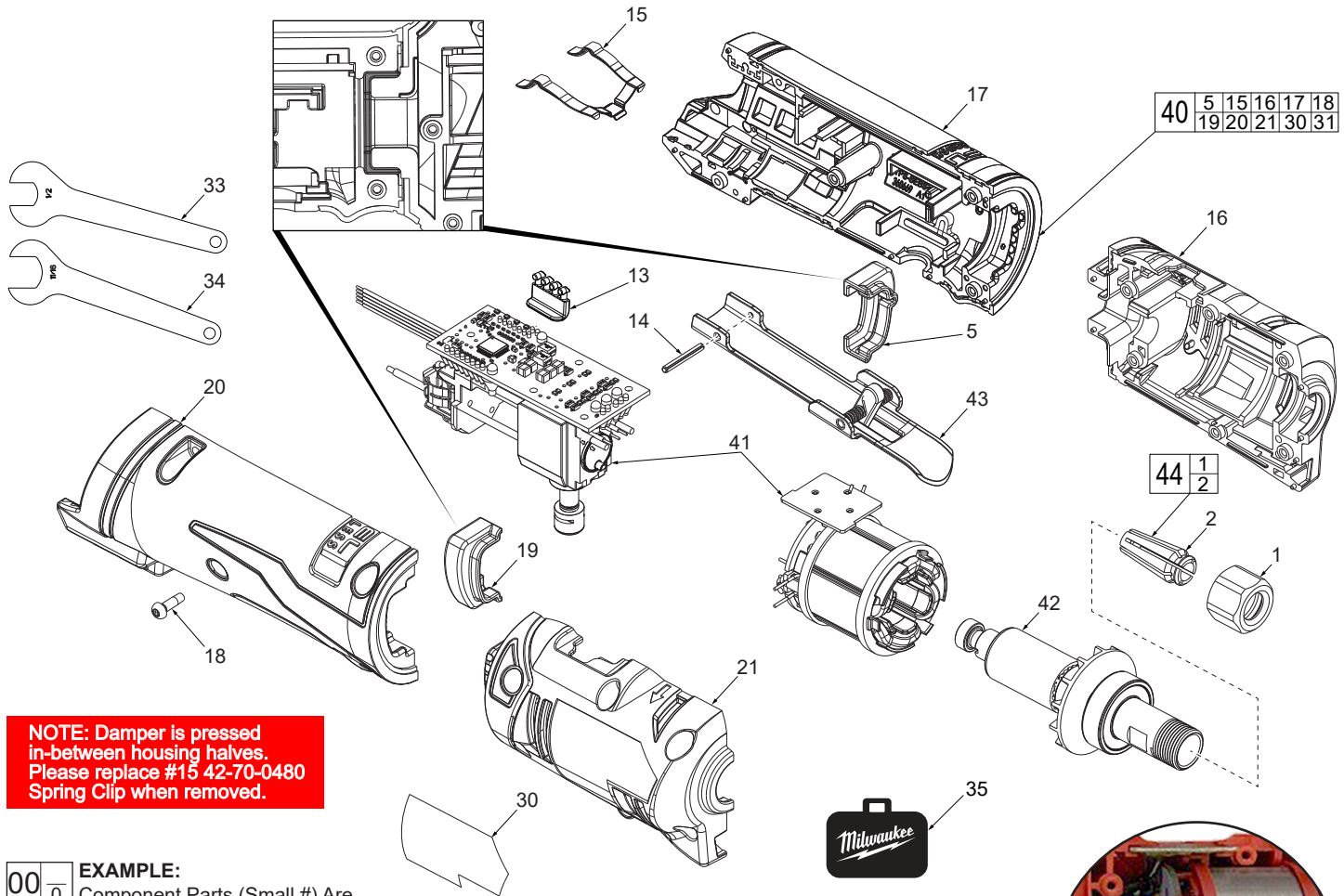




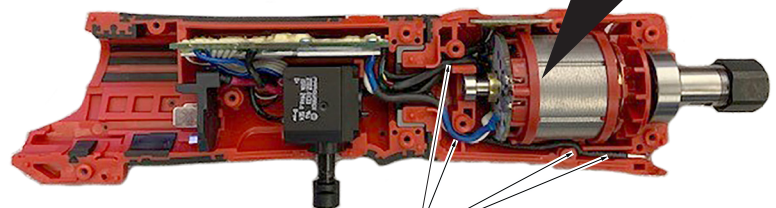
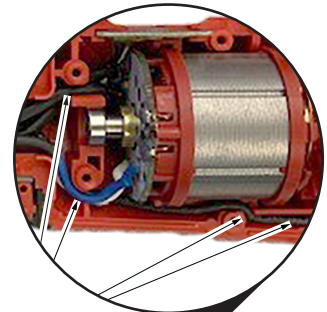
SERVICE PARTS LIST

BULLETIN NO.
54-22-2105

SPECIFY CATALOG NO. AND SERIAL NO. WHEN ORDERING PARTS		REVISED BULLETIN	DATE
M12 FUEL™ Straight Die Grinder			Nov. 2024
CATALOG NO.	2486-20	STARTING SERIAL NO.	K93A
		WIRING INSTRUCTION	



Install the electronics assembly, route wires through wire traps and channels as shown. Be sure all components are seated squarely and firmly in place. Be sure there is no interference when installing the housing covers (20, 21).



Wire Traps or Channels

FIG.	PART NO.	DESCRIPTION OF PART	NO. REQ.
1	48-68-0031	Collet Nut	1
2	48-66-0974	1/4" Collet	1
5	-----	Damper for Support	1
13	23-28-0340	Light Pipe	1
14	44-60-0575	Rivet Pin for Housing	1
15	42-70-0480	Spring Clip	1
16	-----	Housing Support Head	1
17	-----	Housing Support Grip	1
18	06-82-3002	Housing Screw	11
19	-----	Damper for Cover	1
20	-----	Housing Cover Grip	1
21	-----	Housing Cover Head	1
30	12-20-2482	Service Nameplate	1
31	10-20-6053	Warning Label (Not Shown)	1
32	42-77-0405	1/8" Collet (Optional) Not Shown	1
33	49-96-4040	Open End Wrench (1/2")	1
34	49-96-4090	Open End Wrench (11/16")	1
35	42-55-2425	Contact Bag	1
40	14-34-0003	Housing Kit	1
41	14-20-0082	Electronics Assembly	1
42	16-01-2405	Rotor Assembly	1
43	44-10-0521	Paddle Trigger Assembly	1
44	14-46-0166	1/4" Collet and Nut Kit	1
50	49-92-9000	10PC Die Grinder Kit (Accessory) (Not Shown)	

SCREW TORQUE SPECIFICATIONS

FIG.	PART NO.	WHERE USED	SEAT TORQUE	
			(kgf-cm)	(lb-in)
18	06-82-3002	Housing Cover Head	7-9	6.0-7.8
18	06-82-3002	Housing Cover Grip	7-9	6.0-7.8

MILWAUKEE TOOL • www.milwaukeetool.com
13135 W. LISBON RD., BROOKFIELD, WI 53005

Drwg. 2