



# SERVICE PARTS LIST

**BULLETIN NO.**  
54-27-0020

SPECIFY CATALOG NO. AND SERIAL NO. WHEN ORDERING PARTS		REVISED BULLETIN	DATE
<b>M12™ CABLE STRIPPER</b>			Nov. 2019
CATALOG NO. 2435-20	STARTING SERIAL NUMBER	WIRING INSTRUCTION	
	<b>L21A</b>	<b>SEE PAGE 2</b>	

**EXAMPLE:**  
Component Parts (Small #)  
Are Included When Ordering  
The Assembly (Large #).

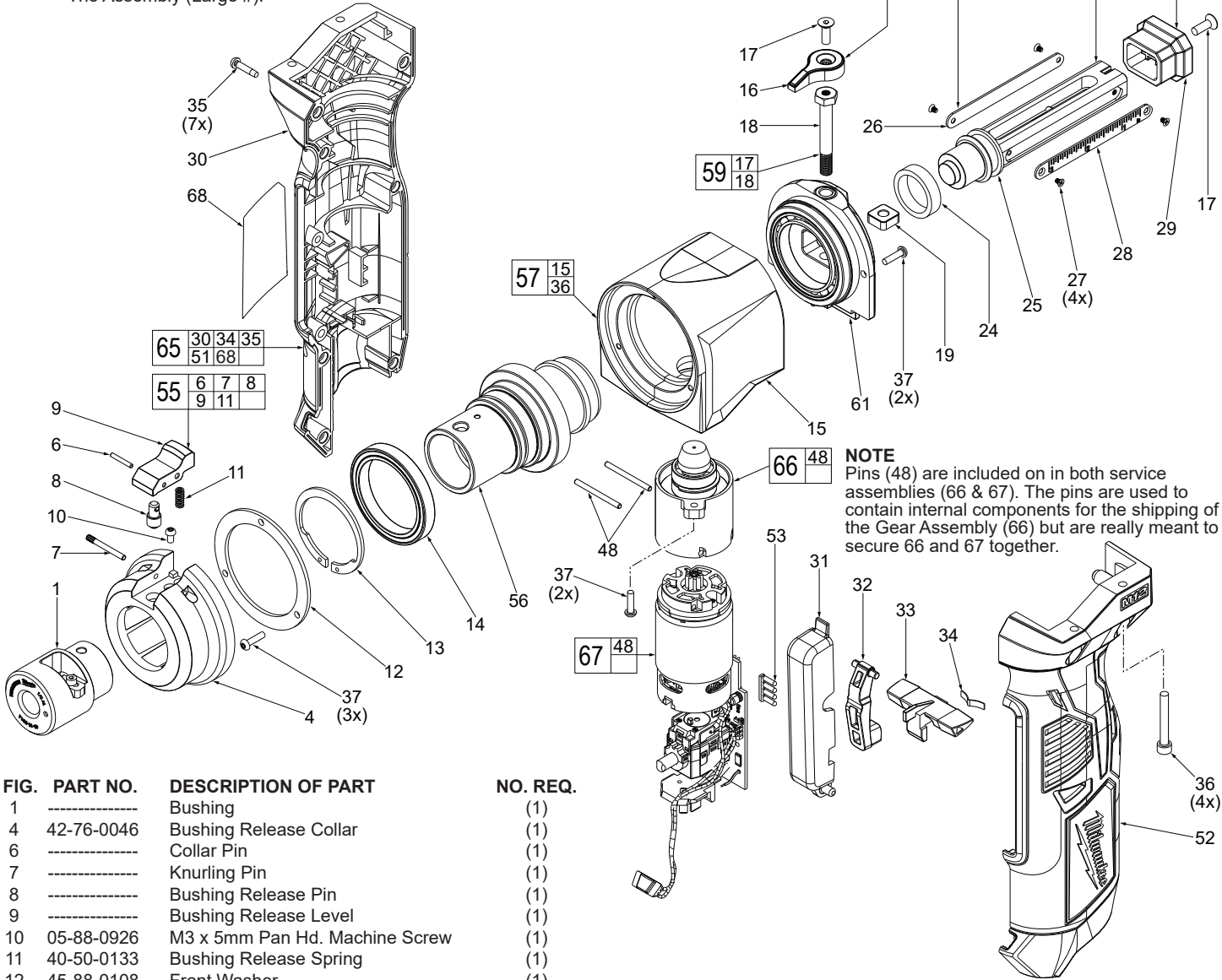


FIG.	PART NO.	DESCRIPTION OF PART	NO. REQ.
1	-----	Bushing	(1)
4	42-76-0046	Bushing Release Collar	(1)
6	-----	Collar Pin	(1)
7	-----	Knurling Pin	(1)
8	-----	Bushing Release Pin	(1)
9	-----	Bushing Release Level	(1)
10	05-88-0926	M3 x 5mm Pan Hd. Machine Screw	(1)
11	40-50-0133	Bushing Release Spring	(1)
12	45-88-0108	Front Washer	(1)
13	44-90-0061	Snap Ring	(1)
14	02-04-0288	Ball Bearing	(1)
15	-----	Gear Case	(1)
16	-----	Lock Down Cap	(1)
17	-----	M4 x 12mm Flat Hd. Hex Recess Screw	(2)
18	-----	M6 Lock Screw	(1)
19	-----	Plug Nut	(1)
24	45-88-0178	Felt Washer	(1)
25	-----	Barrel Plug	(1)
26	-----	Depth Ruler (Metric)	(1)
27	-----	M2.5 x 3.5mm Flat Hd. Phillips Screw	(4)
28	-----	Depth Ruler (Inch)	(1)
29	-----	Plug Knob	(1)
30	-----	Right Housing	(1)
31	31-92-0022	Switch Trigger	(1)
32	31-92-0023	Lever Trigger	(1)
33	31-76-0460	Shuttle	(1)
34	40-50-0027	Detent Plate Spring	(1)
35	06-82-1080	M3 x 14mm Pan Hd. T-10 ST Screw	(7)
36	05-88-0031	M4 x 30mm Cap Hd. Hex Recess Screw	(4)
37	05-74-0076	M3 x 12mm Pan Hd. Taptite T-10 Screw	(7)

FIG.	PART NO.	DESCRIPTION OF PART	NO. REQ.
48	-----	Motor Cover Pin	(2)
52	-----	Left Housing	(1)
53	31-01-0233	Fuel Gauge Lens	(1)
55	14-86-0015	Bushing Release Kit	(1)
56	14-29-0018	Bevel Gear Assembly	(1)
57	14-30-0084	Gear Case w/ Screws Kit	(1)
58	31-12-0023	Lock Down Cap w/ Screw Kit	(1)
59	06-54-0015	Plug Nut w/ Screw Kit	(1)
61	14-67-0012	Back Plate Assembly	(1)
62	31-51-0034	Depth Ruler Kit	(1)
63	43-98-0056	Plug Knob Kit	(1)
64	30-06-0015	Barrel Plug Assembly	(1)
65	14-34-2435	Housing Kit w/ Service Nameplate	(1)
66	14-29-0019	Gear Assembly	(1)
67	14-50-1055	Motor/Electronics Assembly	(1)
68	12-20-2448	Service Nameplate	(1)

AS AN AID TO REASSEMBLY, TAKE NOTICE OF WIRE ROUTING AND POSITION IN WIRE GUIDES AND TRAPS WHILE DISMANTLING TOOL.

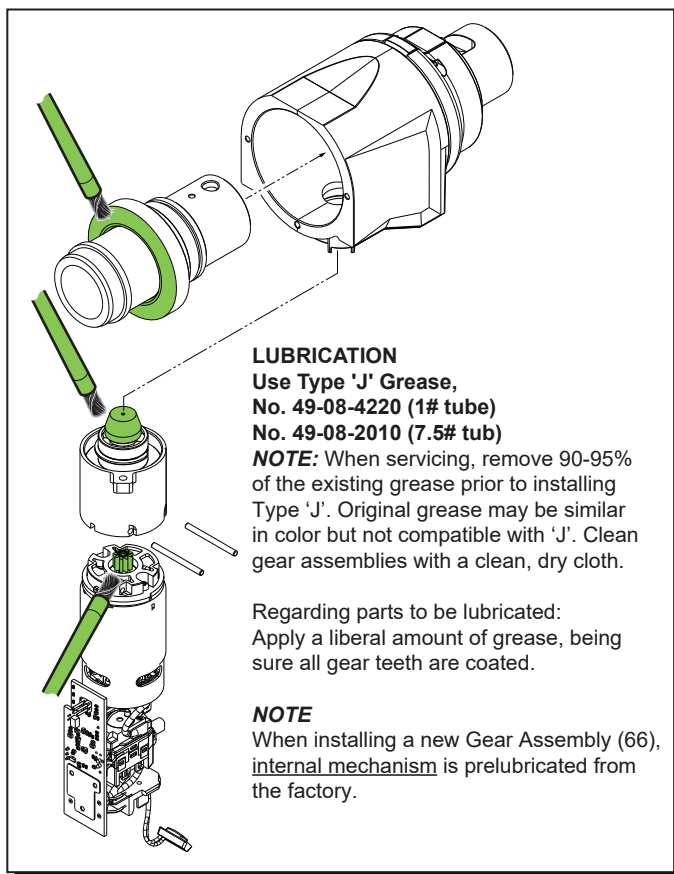
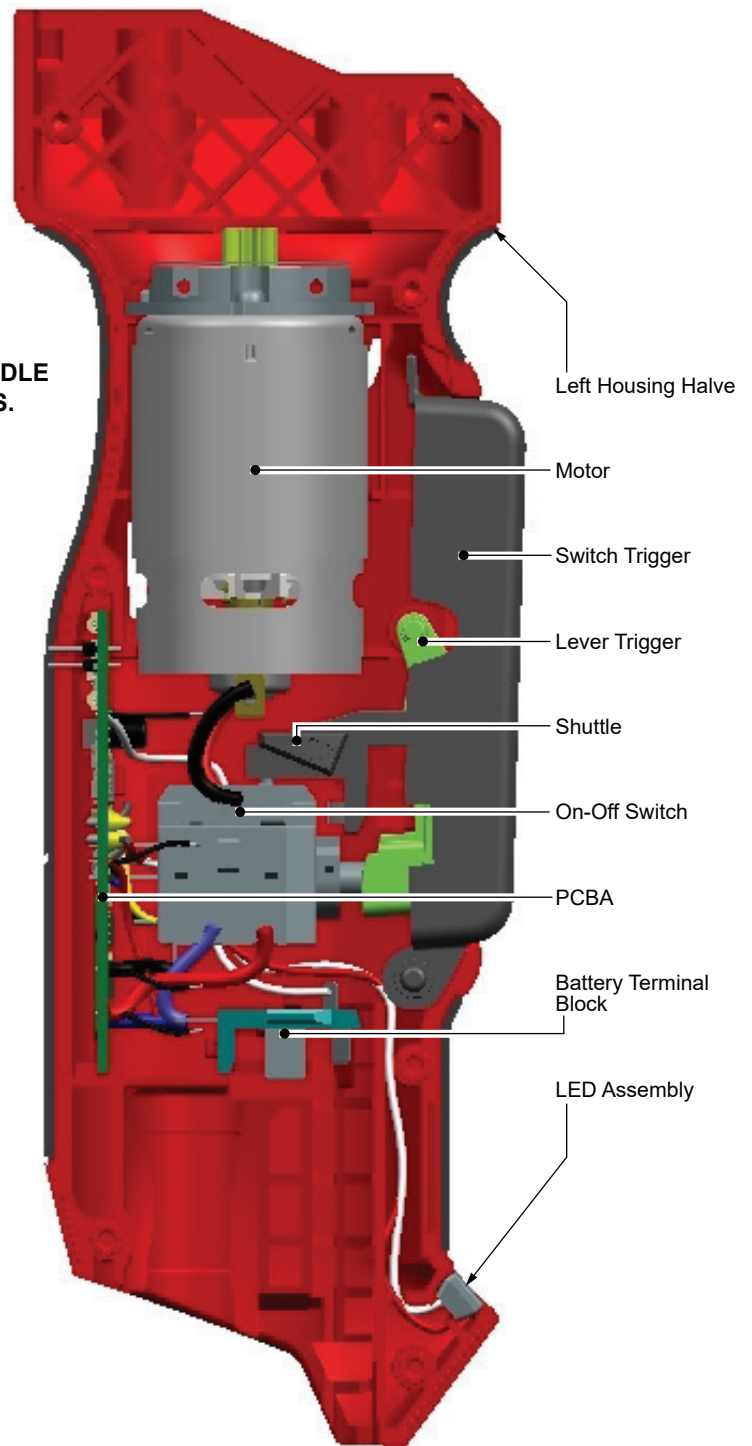
BE SURE THAT ALL COMPONENTS OF THE ELECTRONICS KIT ARE SEATED FIRMLY AND SQUARELY IN THE HANDLE RECESSES.

AVOID PINCHED WIRES, BE SURE THAT ALL WIRES AND SLEEVES ARE PRESSED COMPLETELY DOWN IN WIRE GUIDES AND TRAPS.

PRIOR TO SECURING THE HANDLE COVER ONTO THE HANDLE SUPPORT, BE SURE THAT THERE ARE NO INTERFERENCES.

BEFORE INSTALLING THE BATTERY, CHECK FOR PROPER FUNCTIONALITY OF SHUTTLE AND TRIGGERS.

INSTALL BATTERY AND DEPRESS SWITCH TRIGGER TO ASSURE TOOL IS OPERATING PROPERLY.



### SCREW TORQUE SPECIFICATIONS

FIG.	PART NO.	DESCRIPTION OF FASTENER	WHERE USED	SEAT TORQUE	
				(KG/CM)	(IN/LBS)
10	05-88-0926	M3 x 5mm Pan Hd. T-10 Machine Screw	Bushing Release Collar	6±1	5±1
17	-----	M4 x 12mm Flat Hd. Hex Recess Screw	Plug Knob	11±2	9±2
17	-----	M4 x 12mm Flat Hd. Hex Recess Screw	Lock Down Cap	11±2	9±2
27	-----	M2.5 x 3.5mm Flat Hd. Phillips Screw	Depth Ruler (Metric)	4±1	3±1
27	-----	M2.5 x 3.5mm Flat Hd. Phillips Screw	Depth Ruler (Inches)	4±1	3±1
35	06-82-0190	M3 x 14mm Pan Hd. T-10 ST Screw	Right Housing	8±1	7±1
36	05-88-0031	M4 x 30mm Cap Hd. Hex Recess Screw	Right and Left Housing Halves	16±2	14±2
37	05-74-0076	M3 x 12mm Pan Hd. Taptite T-10 Screw	Front Washer	9±1	8±1
37	05-74-0076	M3 x 12mm Pan Hd. Taptite T-10 Screw	Gear Assembly	9±1	8±1
37	05-74-0076	M3 x 12mm Pan Hd. Taptite T-10 Screw	Back Plate Assembly	9±1	8±1

RED fasteners listed in this chart indicate critical torques