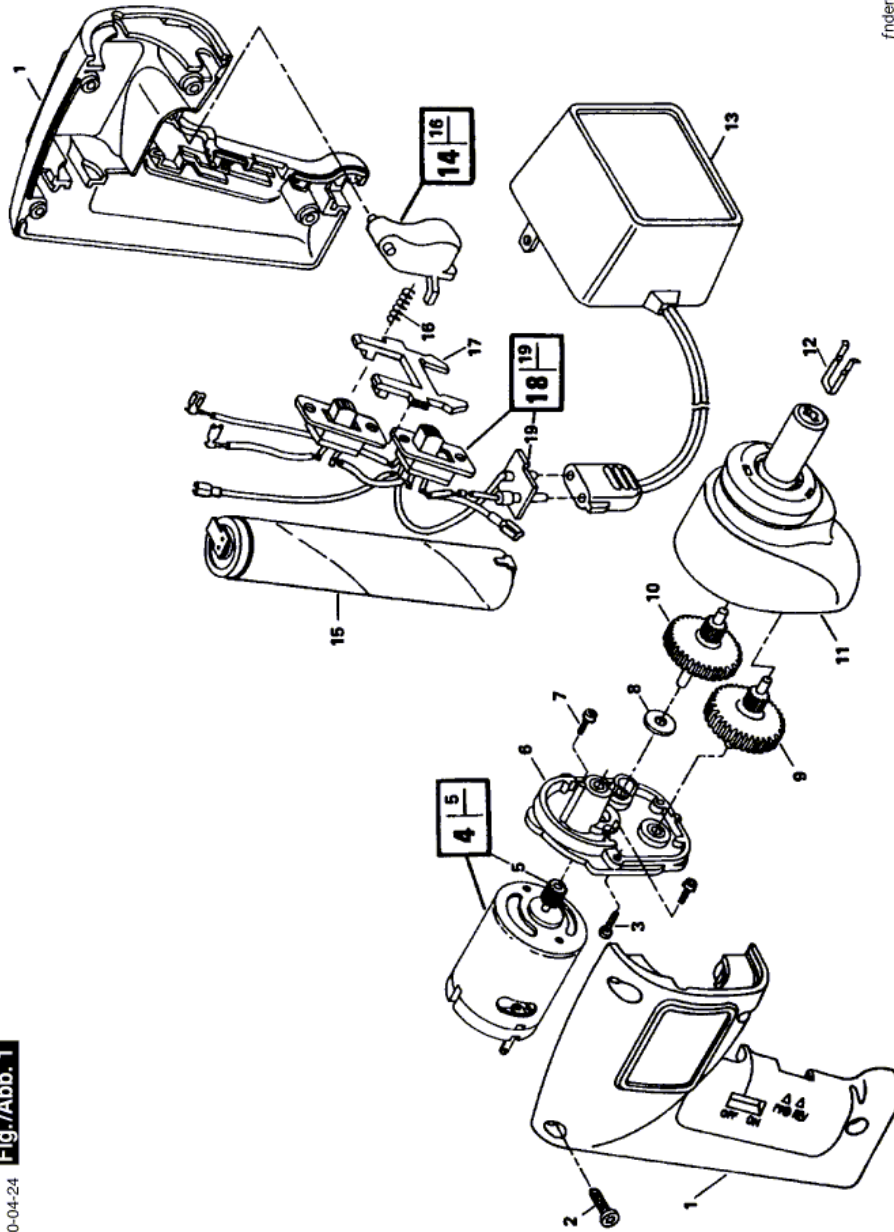


17.08.2015 |

## Cordless Drill Driver - F 012 230 50A - 2305 TYPE ...

Item	Part Number	Description	Illustration	Price	Quantity	Price Group
1	2 610 348 087	Handle	1	-,-	1	-
2	2 610 323 769	Screw	1	-,-	4	11
3	2 610 327 772	Screw	1	-,-	3	11
4	2 610 327 779	Motor Block 3,6V	1	-,-	1	31
5	2 610 327 756	Pinion	1	-,-	1	11
6	2 610 328 478	Retaining Plate	1	-,-	1	-
7	2 610 327 798	Screw	1	-,-	2	11
8	2 610 327 764	Washer	1	-,-	1	-
9	2 610 327 774	Pinion	1	-,-	1	-
10	2 610 327 781	Conversion Gear	1	-,-	1	-
11	2 610 327 775	Housing	1	-,-	1	-
12	2 610 356 022	Spring retaining ring	1	-,-	1	-
13	2 610 327 495	Charging Transformer 115V	1	-,-	1	-
14	2 610 321 644	Lever	1	-,-	1	19
15	2 610 355 790	Battery Set	1	-,-	1	32
16	2 610 321 643	Spring	1	-,-	1	-
17	2 610 313 839	Fuse	1	-,-	1	13
18	2 610 350 924	Switch	1	-,-	1	21
19	2 610 327 496	Connection plate	1	-,-	1	-

Illustration - Type E



Änderungen vorbehalten  
Modifications reserved  
Modifications reserves  
Salvo modificaciones

F01223050A  
Stand }  
Issue } 00-04-24  
**Fig./Abb. 1**

Information subject to change without further notice.