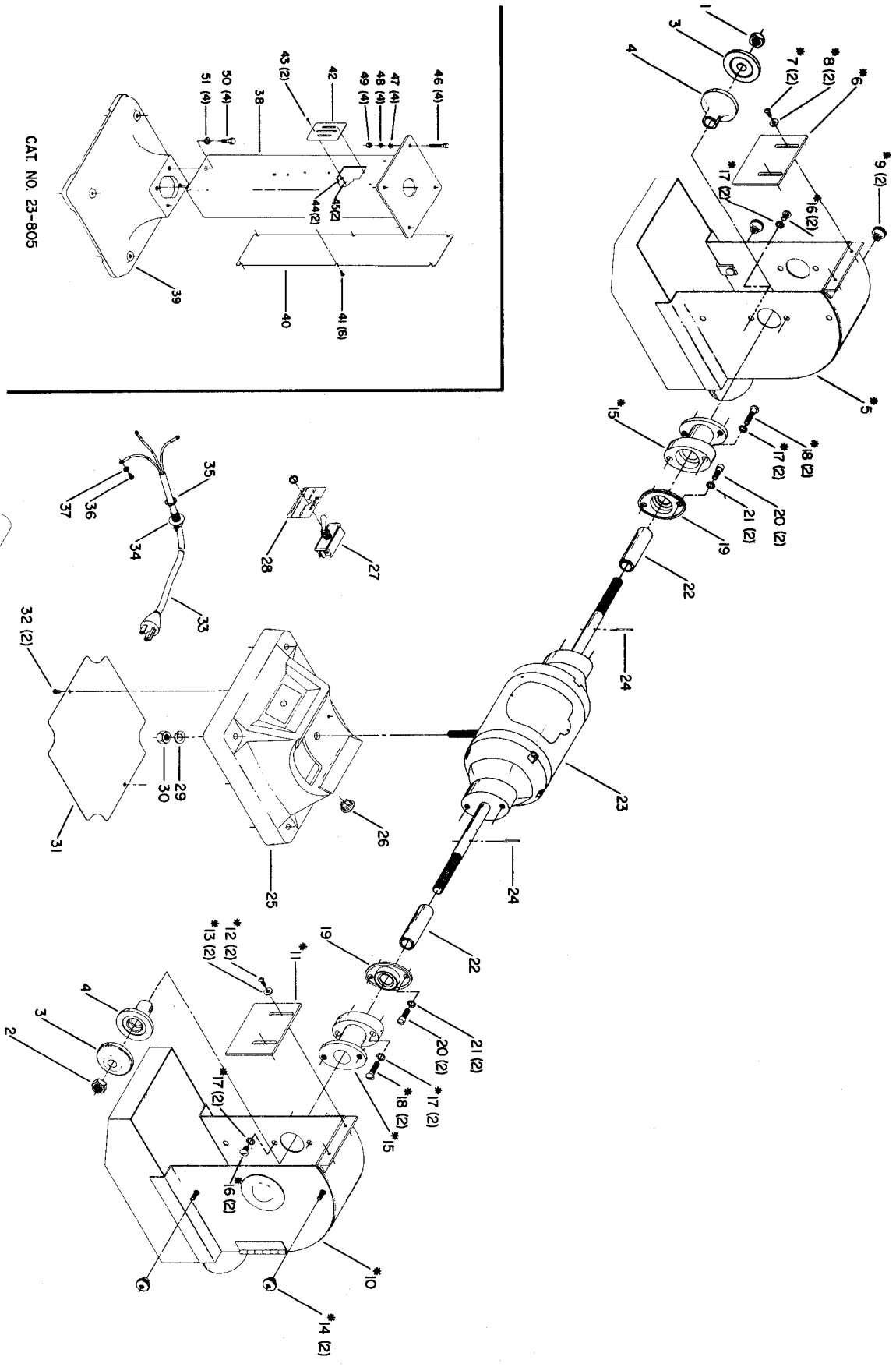




**23-233, 23-234, 23-239, 23-241,
23-242, 23-243, 23-249, 23-251,
23-261, 23-262, 23-263, 23-268
1/2 HP LONG-SHAFT BUFFER**

G-3C
440-03-651-0001
Revised 10-15-85



CAT. NO. 23-805

*NOT INCLUDED WITH BASIC MACHINE

Parts List for 23-233 Type 1

Item Number	Part Number	Description	Qty Required
1	902012009848S	ARBOR NUT-LH	1
2	902012012571S	HEX NUT	1
3	424021030001	FLANGE	1
4	412011035005	FLANGE	1
5	000000-00	No Longer Available	1
7	901020100561S	MACHINE SCREW	2
8	5140010-69	WASHER	2
9	000000-00	No Longer Available	2
10	000000-00	No Longer Available	1
12	901020100561S	MACHINE SCREW	2
13	5140010-69	WASHER	2
14	000000-00	No Longer Available	2
16	901020100520	MACHINE SCREW	2
17	904030301656S	LOCK WASHER	8
18	901010600649S	CAP SCREW	4
19	412013795001	BEARING SEAL	1
20	901020500704	CAP SCREW	4
21	000000-00	No Longer Available	4
22	000000-00	No Longer Available	1
24	905010102719	ROLL PIN	1
25	000000-00	No Longer Available	1
26	961010107460	BUTTON	1
27	1225378	SWITCH	1
28	438010210246	SWITCH PLATE	1
29	904020101716	LOCK WASHER	1
30	902010101232	HEX NUT	1
31	412010315006	SHIELD PLATE	1

Parts List for 23-233 Type 1

Item Number	Part Number	Description	Qty Required
32	491948-00	SCREW	2
33	000000-00	No Longer Available	1
34	438010040007S	CLAMP	1
35	438010090001S	LOCK NUT	1
36	000000-00	No Longer Available	1
37	5140099-99	LOCK WASHER	1
39	000000-00	No Longer Available	1
41	901030408015S	CAP SCREW	6
42	402040310001S	SWITCH OPENING COVER	1
43	000000-00	No Longer Available	2
44	492056-00	WASHER	2
45	902011209232	HEX NUT	2
46	901010600635S	SCREW	4
47	904010101620S	WASHER	4
48	904020101703S	LOCK WASHER	4
49	902010101300S	HEX NUT	4
50	901010600628	CAP SCREW	4
51	904020201705	LOCK WASHER	4
52	000000-00	No Longer Available	1