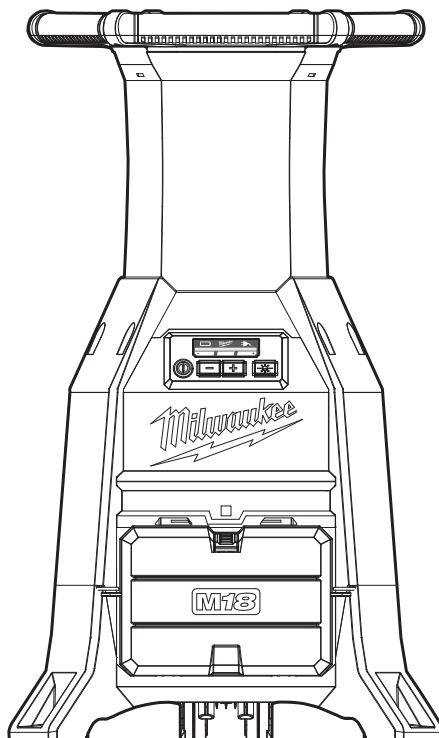




SERVICE PARTS LIST

BULLETIN NO.
54-06-2250

SPECIFY CATALOG NO. AND SERIAL NO. WHEN ORDERING PARTS		REVISED BULLETIN	DATE
M18™ RADIUS™ Site Light/Charger With ONE-KEY™			July 2025
CATALOG NO. 2150-20	SERIAL NO. J06A	WIRING INSTRUCTION	



Only maintenance, service, repairs, and replacements of parts as defined in the Operator's Manual can be performed by the user.

All other repairs are to **ONLY** be performed by personnel authorized by MILWAUKEE TOOL. Do not attempt to install other parts; this **COULD** void your tool warranty.

For service, parts, or inquiries, contact us:

- Customer Service at 1.800.SAWDUST (1.800.729.3878)
- E-Service tool repair at: www.milwaukeetool.com/e-service
- Find a local authorized MILWAUKEE service location at Milwaukeetool.com
- Find a MILWAUKEE factory Service Center Location or MILWAUKEE factory Central Repair Center at Milwaukeetool.com. Send the following, prepaid and insured:
 - Your name, address, and phone number
 - Description of the issues
 - Copy of the proof of purchase
 - Tool, charger, and batteries involved with the issues

MILWAUKEE factory Central Repair Centers:

MILWAUKEE TOOL
Central Repair
1401 Sycamore Avenue
Greenwood, MS 38930

MILWAUKEE TOOL
Central Repair
2198 Southtech Drive
Greenwood, IN 46143

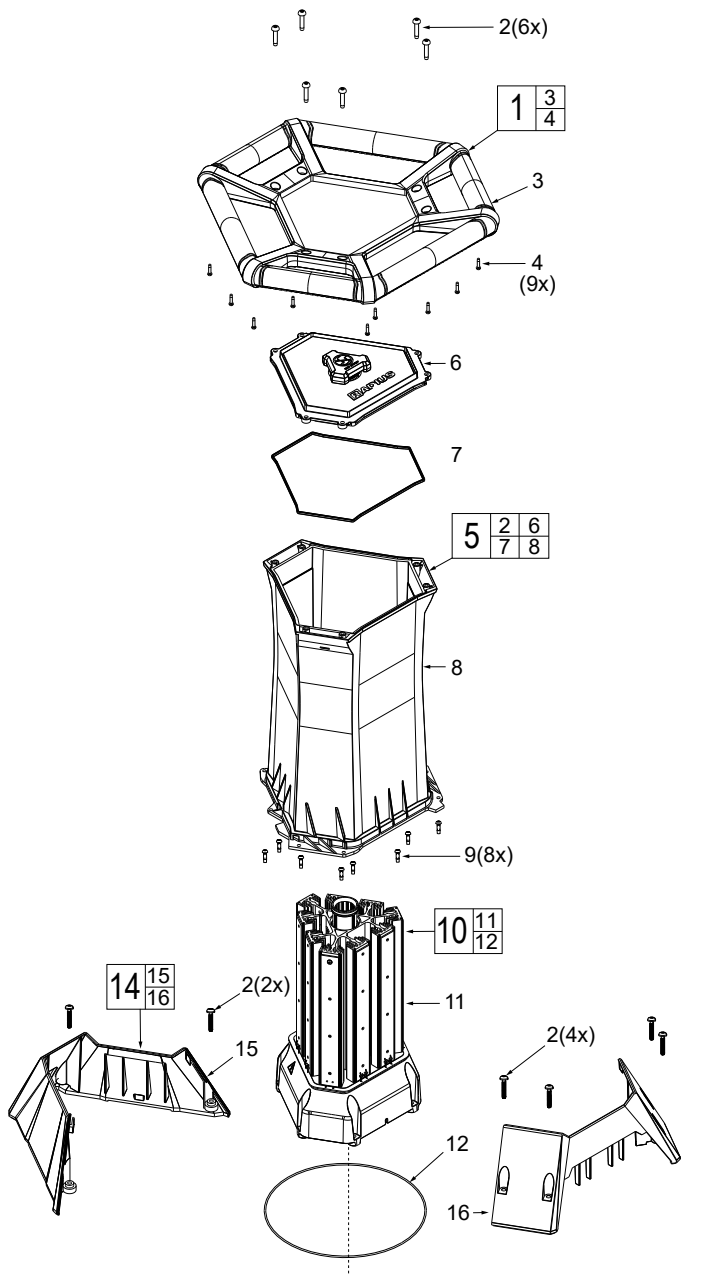


FIG.	PART NO.	DESCRIPTION OF PART	NO. REQ.
1	14-34-0005	Top Handle Assembly	(1)
2	06-82-2250	M5 T25 Torx Screw	(20)
3	-----	Top Handle	(1)
4	06-82-0190	M3 x 14 Screw	(9)
5	44-06-0135	Lens Assembly	(1)
6	-----	Top Lens	(1)
7	43-40-0045	Lens Cover Seal	(1)
8	-----	Lens	(1)
9	06-82-0195	M4 x 12 Screw	(10)
10	23-28-0025	LED Console Assembly	(1)
11	-----	LED Console	(1)
12	43-40-0055	Bottom Lens Seal	(1)
14	43-76-0045	Main Body Cover Kit	(1)
15	-----	Back Housing	(1)
16	-----	Front Housing	(1)
17	42-62-0005	Side Handle w/ Screw	(1)
18	-----	Side Handle	(1)
19	-----	M4 T20 Torx Screw	(2)
20	40-50-1040	AC Outlet Cover Spring	(1)
21	44-60-0475	Pin	(1)
22	23-33-0015	AC Outlet Cover	(1)
23	23-33-0005	AC Outlet	(1)

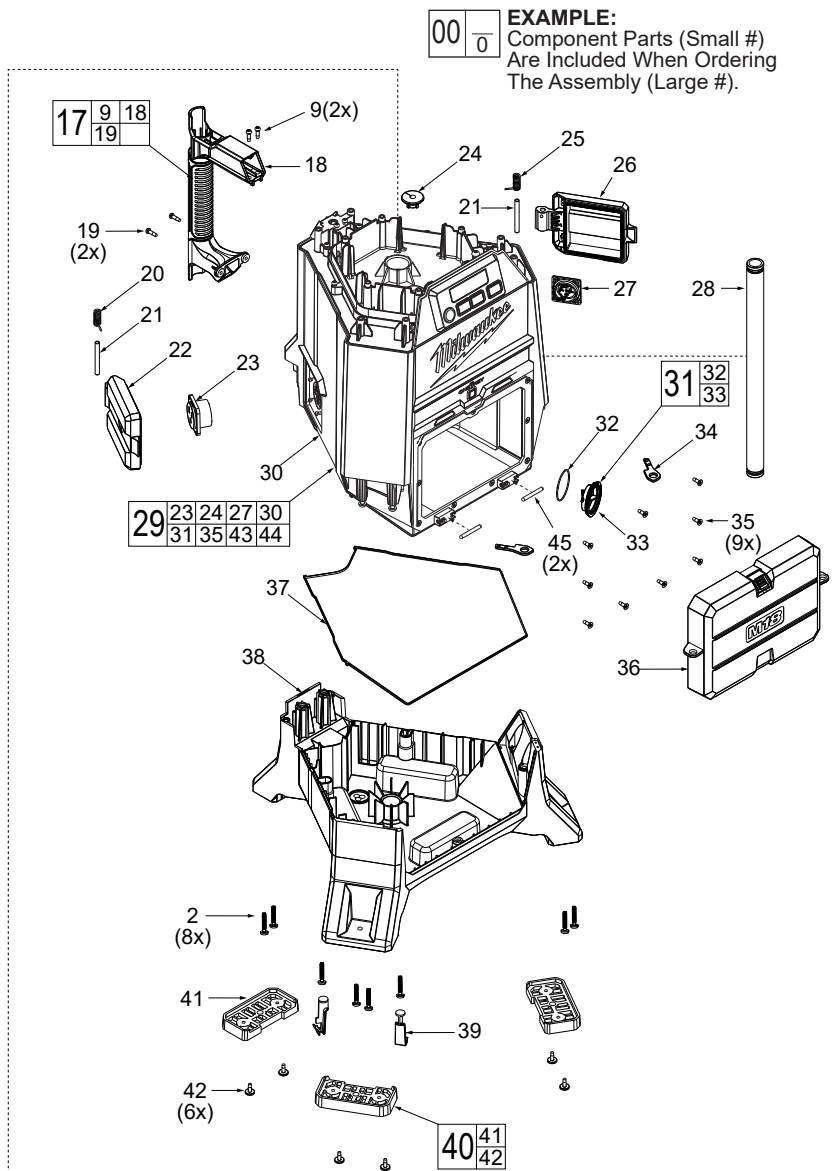


FIG.	PART NO.	DESCRIPTION OF PART	NO. REQ.
24	43-40-0050	Rubber Seal	(1)
25	40-50-1115	AC Inlet Cover Spring	(1)
26	23-33-0020	AC Inlet Cover	(1)
27	23-33-0010	AC Inlet	(1)
28	45-76-0035	Tube w/ O-Rings	(1)
29	-----	Base & PCBA Assy. w/ Bluetooth	(1)
30	-----	Base	(1)
31	31-15-0475	Coin Cell Cover Kit	(1)
32	-----	O-Ring	(1)
33	-----	Coin Cell Cover	(1)
34	42-70-0010	Metal Clip	(2)
35	06-82-0200	M4 x 16 Screw	(9)
36	31-21-0125	Battery Door Assembly	(1)
37	43-40-0060	Bottom Case Seal	(1)
38	42-20-0035	Bottom Case	(1)
39	31-44-5001	Screw Cover	(2)
40	14-74-0115	Rubber Boot Kit	(1)
41	-----	Rubber Boot	(3)
42	-----	M4 x 12 Screw w/ Washer	(6)
43	12-20-2151	Service Nameplate (Not shown)	(1)
44	10-20-2153	Warning Label (Not shown)	(1)
45	44-60-0545	Battery Door Pin	(2)