



SERVICE PARTS LIST

BULLETIN NO.
54-06-2040

SPECIFY CATALOG NO. AND SERIAL NO. WHEN ORDERING PARTS				REVISED BULLETIN	DATE
M18™ Magnetic Extendable Boom Light					Mar. 2024
CATALOG NO.	2129-20	SERIAL NO.	P55A	WIRING INSTRUCTION	

EXAMPLE:
00 0 Component Parts (Small #)
Are Included When Ordering
The Assembly (Large #).

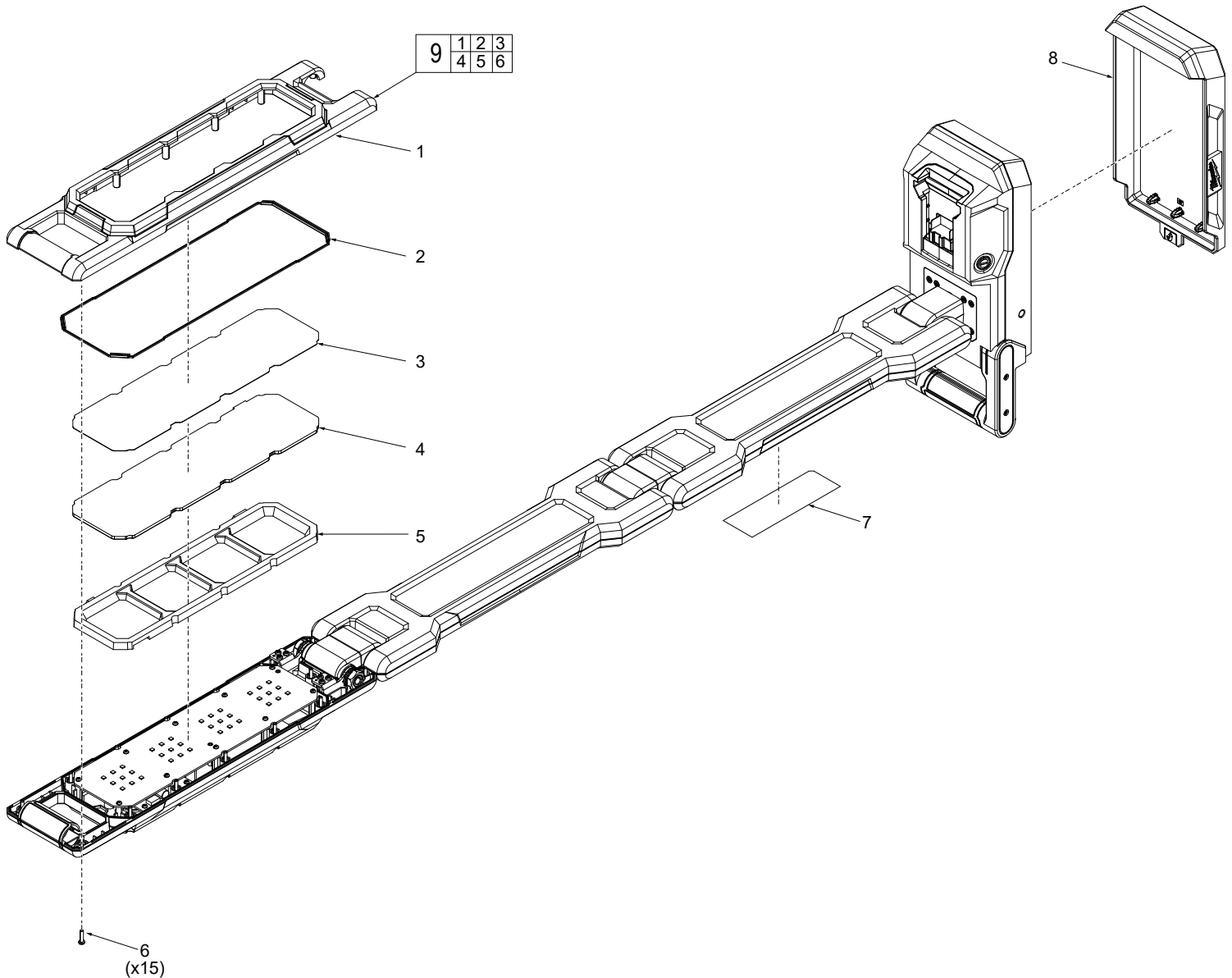


FIG.	PART NO.	DESCRIPTION OF PART	NO. REQ.
1	-----	Lamp Top Housing	(1)
2	-----	Gasket	(1)
3	-----	Lens Protector	(1)
4	-----	Lens	(1)
5	-----	Reflector	(1)
6	-----	PT3 x 12mm Screw	(15)
7	12-20-8802	Service Nameplate	(1)
8	42-38-0164	Storage Boot	(1)
9	22-68-0237	Light Head Kit	(1)

FIG.
7

NOTES

A clean, dry surface is essential for proper performance for any adhesive system. The area intended for application of any adhesive label or nameplate must be prepared by cleaning with isopropyl alcohol. The solvent is to be applied with a clean, lint free applicator and the surface allowed to dry before applying the label or name plate.