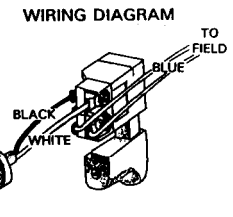
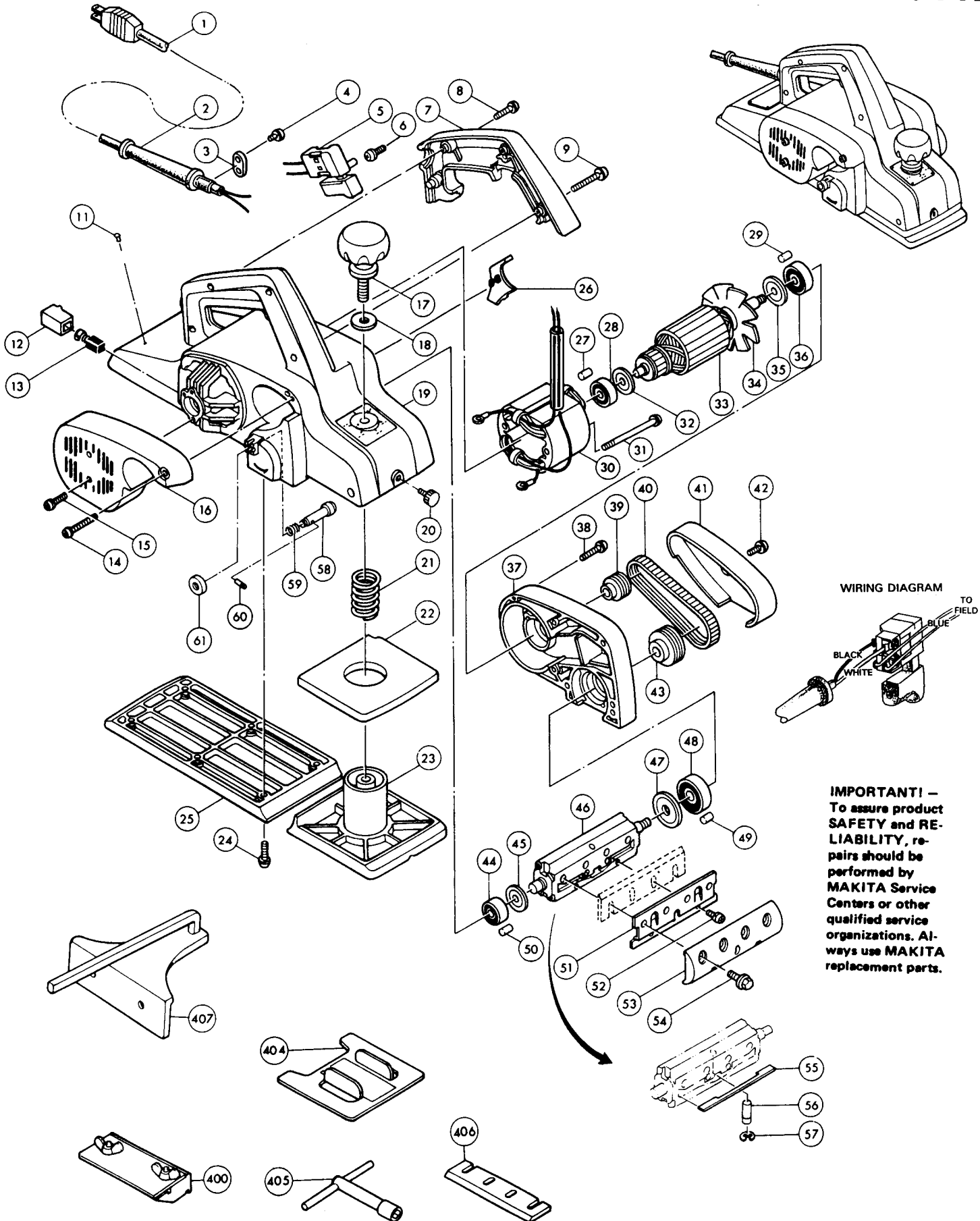




# 4<sup>3</sup>/<sub>8</sub>" PLANER

# MODEL 1911B



**IMPORTANT! -**  
To assure product  
**SAFETY** and **RE-**  
**LIABILITY**, re-  
pairs should be  
performed by  
**MAKITA** Service  
Centers or other  
qualified service  
organizations. Al-  
ways use **MAKITA**  
replacement parts.

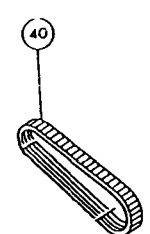
Fig.	Part No.	Qty. Used	Description	Fig.	Part No.	Qty. Used	Description
1	664074-1	1	POWER SUPPLY CORD (2X18X16;SJ)	37	*	1	BRACKET (Incl. Fig. 29, 49)
2	682502-4	1	CORD GUARD	38	911158-9	6	PAN HEAD SCREW M4X30
3	**	1	STRAIN RELIEF	39	222050-7	1	V-PULLEY 4-24L
4	911133-5	2	PAN HEAD SCREW M4X18	40	*	1	POLY V- BELT 4-272
5	651216-6	1	SWITCH	41	411426-5	1	BELT COVER
6	652008-6	4	PAN HEAD SCREW M3.5X7	42	911128-8	1	PAN HEAD SCREW M4X16
7	414538-3	1	HANDLE COVER	43	222063-8	1	V-PULLEY 4-38
8	911168-6	1	PAN HEAD SCREW M4X40	44	211062-5	1	BALL BEARING 6000ZZ
9	911158-9	3	PAN HEAD SCREW M4X30	45	341389-0	1	WASHER 10
11	953106-2	4	RIVET	46	161078-9	1	DRUM
12	643601-7A	2	BRUSH HOLDER	47	341377-7	1	WASHER 12
13	181437-1	1	CARBON BRUSH (CB-107)	48	211107-9	1	BALL BEARING 6201ZZ
14	911168-6	1	PAN HEAD SCREW M4X40	49	263005-3	1	RUBBER PIN 6
15	911123-8	2	PAN HEAD SCREW M4X14	50	263002-9	1	RUBBER PIN 4
16	150133-2	1	REAR COVER (Incl. Caution Label 817733-8)	51	345157-3	2	BLADE HOLDER
17	271226-3	1	KNOB 50	52	911106-8	4	PAN HEAD SCREW M4X8
18	941251-5	1	FLAT WASHER 10	53	345156-5	2	DRUM PLATE
19	**	1	MAIN FRAME (Incl. Scale Plate 816695-7)	54	251609-3	8	HEX FLANGE H.B. M6X17
20	251812-6	1	SCREW M5X10	55	232065-6	2	LEAF SPRING
21	231004-3	1	COMPRESSION SPRING 18	56	321346-4	2	PIN
22	421147-1	1	RUBBER PACKING	57	961017-7	2	STOP RING
23	312951-8	1	FRONT BASE	58	321347-2	1	STOPPER PIN
24	911231-5	6	PAN HEAD SCREW M5X20	59	231303-3	1	COMPRESSION SPRING 5
25	312952-6	1	REAR BASE	60	256714-1	1	PIN 2
26	411428-1	1	BAFFLE PLATE	61	252415-9	1	NUT
27	263014-2	1	RUBBER PIN 4	<b>ACCESSORIES</b>			
28	211031-6	1	BALL BEARING 608LLB	400	123055-9	1	SHARPENING HOLDER (Incl. 2 Ea. Wing Nut I M6 934301-3; 2 Ea. C.S.N. BOLT 6X30 251920-3)
29	263002-9	1	RUBBER PIN 4	404	155270-7	1	CUTTER LEVELLER
30	622416-5	1	FIELD	405	782209-3	1	SOCKET WRENCH 9
31	911290-9	2	P.H. SCREW M5X65	406	793008-8	1	PLANER BLADE 110
32	681613-2	1	INSULATION WASHER	407	164371-0	1	GUIDE RULE
33	612576-1	1	ARMATURE (Incl. Fig. 28, 32-36)				
34	241044-3	1	FAN				
35	213051-6	1	DUST SEAL 10				
36	211066-7	1	BALL BEARING 6200LLB				

**SERVICE CHANGE**

\* SEE SERVICE CHANGE 1  
\*\* SEE SERVICE CHANGE 2

1. Change on Poly V-Belt and Bracket.

**TYPE 1**

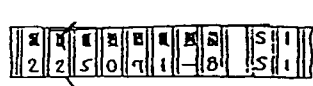


2 2 5 0 0 7 - 7 Q E

**PART NO.**

**TYPE 2**

**ANTI-STATIC BELT WITH WHITE LINE**



**PART NO.**

**ANTI-STATIC PAINT**

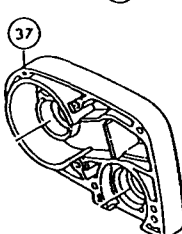
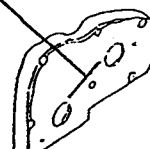





FIG.	DESCRIPTION	TYPE 1	TYPE 2
37	Bracket	Part #152197-2 (Discontinued)	Part #152362-3
40	Poly V-Belt	Part #225037-8 (Discontinued)	Part #225069-5

The above parts are completely interchangeable in set.

## SERVICE CHANGE

### 2. Change on Main Frame.

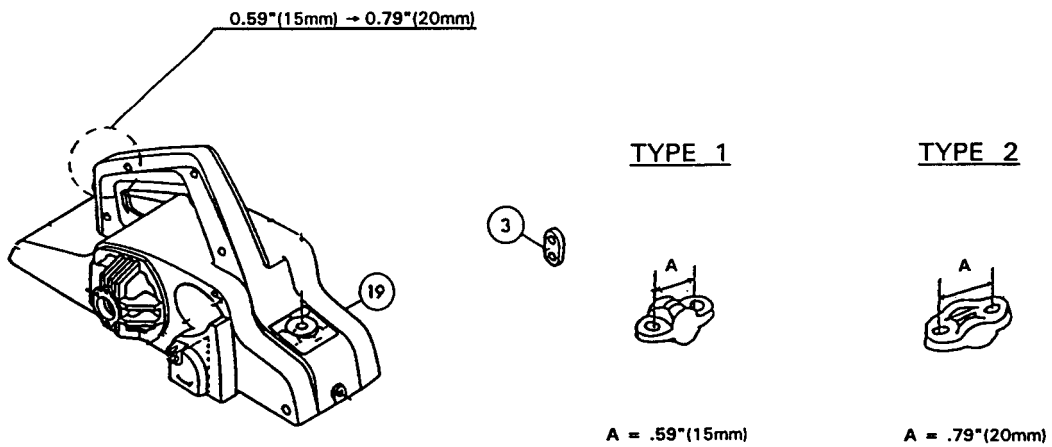


FIG.	DESCRIPTION	TYPE 1	TYPE 2
3	Strain Relief	PART# 687002-9	PART# 687063-9
19	Main Frame	PART# 157934-9 (Discontinued)	PART# 159689-2

The above parts are interchangeable as a set.