

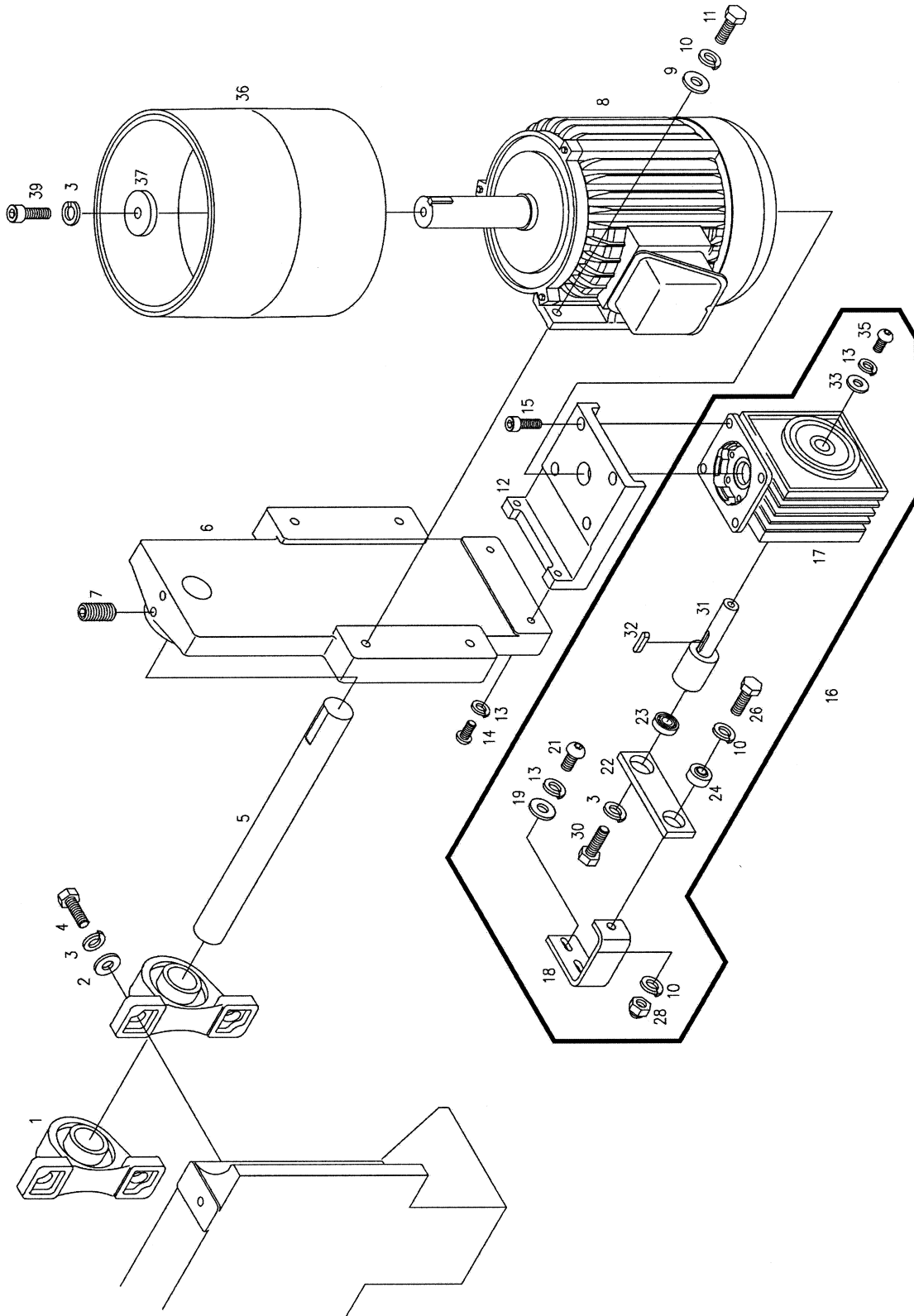
Parts List: Base Assembly

| Index No. | Part No. | Description | Size | Qty |
|-----------|------------|---|---------------|-----|
| 1 | OES-001 | Machine Base | | 1 |
| 2 | OES-002 | Magnetic Motor Starter | 1Ph, 230V | 1 |
| | OES-093 | Magnetic Motor Starter | 3Ph, 230/460V | 1 |
| 3 | OES-003 | Oscillating Unit Cover | | 1 |
| 4 | TS-2246082 | Socket Head Button Screw | M6 x 8 | 4 |
| 5 | OES-004 | Support Bracket | | 1 |
| 6 | TS-1550041 | Flat Washer | M6 | 15 |
| 7 | TS-1551041 | Lock Washer | M6 | 13 |
| 8 | TS-2246162 | Socket Head Button Screw | M6 x 16 | 13 |
| 9 | OES-005 | Mounting Foot | | 2 |
| 10 | TS-1550071 | Flat Washer | M10 | 8 |
| 11 | TS-1551071 | Lock Washer | M10 | 8 |
| 12 | TS-1491041 | Hex Cap Screw | M10 x 30 | 4 |
| 13 | OES-006 | Rubber Foot Pad | | 4 |
| 14 | OES-007 | Platen Casting | | 1 |
| 17 | TS-2210451 | Hex Cap Screw | M10 x 45 | 4 |
| 18 | | Sanding Belt (also see Optional Accessories, page 19) | | 1 |
| 19 | OES-008 | Graphite Pad | | 1 |
| 20 | OES-009 | Pad Retaining Plate | | 2 |
| 21 | TS-1551031 | Lock Washer | M5 | 6 |
| 22 | TS-2245162 | Socket Head Button Screw | M5 x 16 | 6 |
| 23 | OES-010 | Lt. Sanding Guard Bracket | | 1 |
| 27 | OES-011 | Rt. Sanding Guard Bracket | | 1 |
| 29 | OES-012 | Belt Guard | | 1 |
| 33 | OES-013 | Guard Plate | | 1 |
| 36 | OES-014 | "U" Handle | | 1 |
| 37 | TS-1504031 | Socket Head Cap Screw | M8 x 16 | 2 |
| 38 | TS-1541031 | Nylon Lock Hex Nut | M8 | 2 |
| 39 | OES-015 | Hand Knob | | 2 |
| 40 | OES-016 | Lifting Eyebolt | | 2 |
| 41 | OES-017 | Switch Arm | | 1 |
| 45 | OES-018 | Rubber Pad | | 4 |
| 46 | OES-019 | Start/Stop Switch | | 1 |
| 47 | OES-094 | Clipper (Female) | | 1 |
| 48 | OES-095 | Clipper (Male) | | 1 |
| 49 | TS-2283061 | Phillips Flat Head Machine Screw | M3 x 6 | 4 |
| 50 | OES-096 | Hand Knob | 1/4" | 1 |

Parts List: Drive Unit

| Index No. | Part No. | Description | Size | Qty |
|-----------|------------|--|--------------------|-----|
| 1 | OES-020 | Ball Bearing Assembly | | 2 |
| 2 | TS-2360121 | Flat Washer | M12 | 4 |
| 3 | TS-1551081 | Lock Washer | M12 | 6 |
| 4 | TS-1492041 | Hex Cap Screw | M12 x 40 | 4 |
| 5 | OES-021 | Pivot Shaft | | 1 |
| 6 | OES-022 | Motor Base | | 1 |
| 7 | TS-1525011 | Socket Set Screw | M10 x 10 | 2 |
| 8 | OES-023A | Motor | 3HP, 1Ph, 230V | 1 |
| | OES-087A | Motor | 3HP, 3Ph, 230/460V | 1 |
| 9 | TS-1550071 | Flat Washer | M10 | 4 |
| 10 | TS-1551071 | Lock Washer | M10 | 6 |
| 11 | TS-1492031 | Hex Cap Screw | M12 x 35 | 4 |
| 12 | OES-024A | Oscillating Motor Bracket | | 1 |
| 13 | TS-1551061 | Lock Washer | M8 | 5 |
| 14 | TS-1504051 | Socket Head Cap Screw | M8 x 25 | 2 |
| 15 | TS-1504041 | Socket Head Cap Screw | M8 x 20 | 4 |
| 16 | OES-025B | Oscillating Unit (includes circled items on breakdown) | | 1 |
| 17 | OES-026B | Reducer Box | | 1 |
| 18 | OES-027 | Bracket | | 1 |
| 19 | TS-1550061 | Flat Washer | M8 | 2 |
| 21 | TS-2248162 | Socket Head Button Screw | M8 x 16 | 2 |
| 22 | OES-028 | Bearing Housing | | 1 |
| 23 | OES-029 | Bearing | 6001 | 1 |
| 24 | OES-030 | Spherical Bearing | PB-10 | 1 |
| 26 | TS-149105 | Hex Cap Screw | M10 x 35 | 1 |
| 28 | TS-2331101 | Cap Nut | M10 | 1 |
| 30 | TS-1492021 | Hex Cap Screw | M12 x 30 | 1 |
| 31 | OES-031 | Cam | | 1 |
| 32 | OES-032 | Shaft Key | M6 x 30 | 1 |
| 33 | OES-033 | Flat Washer | 8 x 22 x 5 | 1 |
| 35 | TS-2248202 | Socket Head Button Screw | M8 x 20 | 1 |
| 36 | OES-034 | Drive Drum | | 1 |
| 37 | OES-035 | Washer | 12 x 40 x 4 | 1 |
| 39 | TS-1492011 | Hex Cap Screw | M12 x 25 | 1 |
| 40 | OES-088 | Power Cord (not shown) | 1Ph | 1 |
| | OES-089 | Power Cord (not shown) | 3Ph | 1 |
| 41 | OES-090 | Motor Cord (not shown) | 1Ph | 1 |
| | OES-091 | Motor Cord (not shown) | 3Ph | 1 |
| 42 | OES-092 | Switch Cord (not shown) | | 1 |
| 43 | OES-023SC | Capacitor, Start (not shown) | | 1 |
| 44 | OES-023RC | Capacitor, Run (not shown) | | 1 |

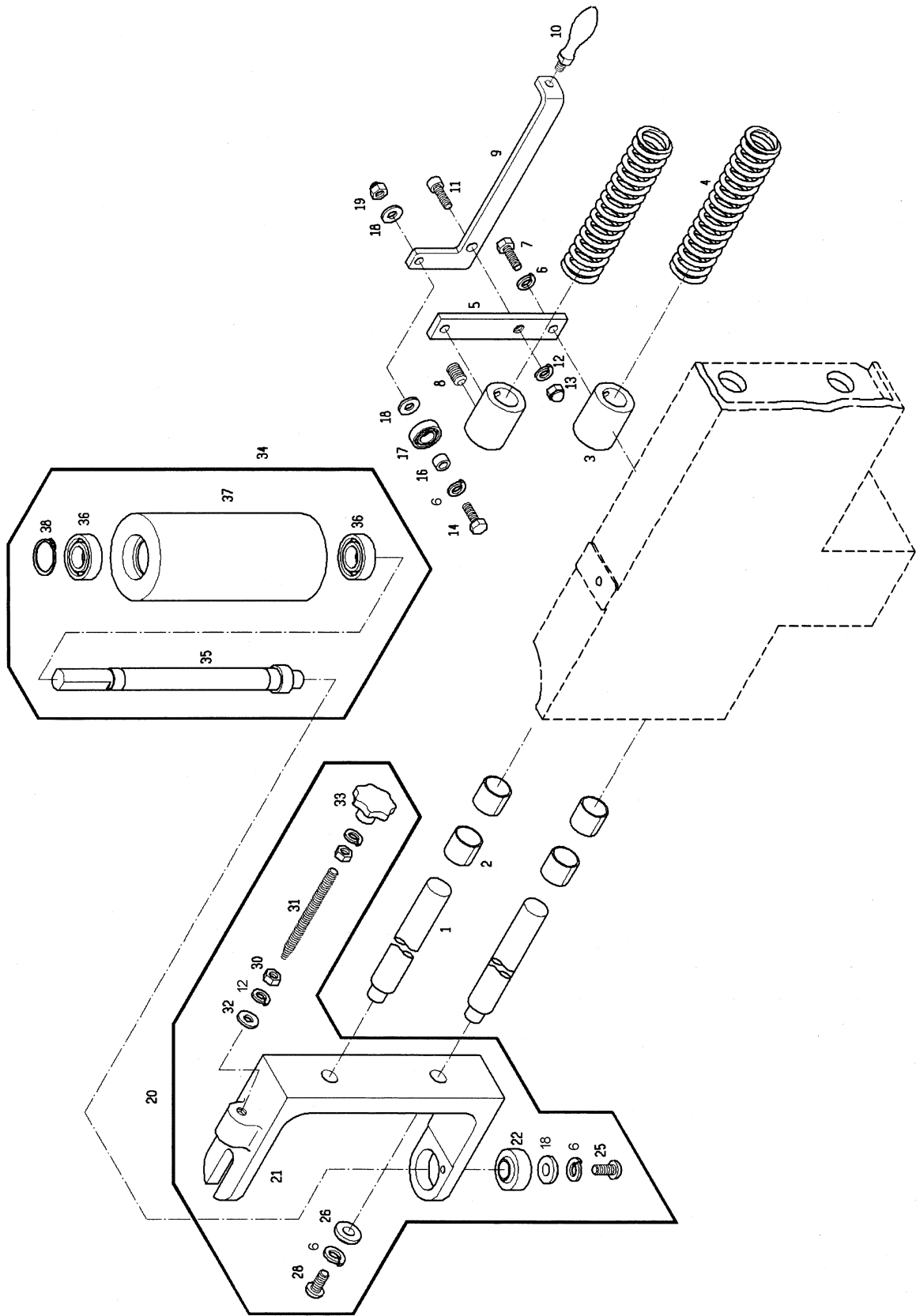
Drive Unit



Parts List: Tracking and Belt Release Unit

| Index No. | Part No. | Description | Size | Qty |
|-----------|------------|--------------------------|-------------|-----|
| 1 | OES-036 | Belt Release Post | | 2 |
| 2 | OES-037 | Bushing | | 4 |
| 3 | OES-038 | Stop Collar | | 2 |
| 4 | OES-039 | Spring | | 2 |
| 5 | OES-040 | Lever Plate | | 1 |
| 6 | TS-1551071 | Lock Washer | M10 | 6 |
| 7 | TS-1491041 | Hex Cap Screw | M10 x 30 | 3 |
| 8 | TS-1525011 | Socket Set Screw | M10 x 10 | 4 |
| 9 | OES-041 | Lever Arm | | 1 |
| 10 | OES-042 | Lever Handle | | 1 |
| 11 | TS-1506031 | Socket Head Cap Screw | M12 x 30 | 1 |
| 12 | TS-1551081 | Lock Washer | M12 | 3 |
| 13 | TS-2331121 | Cap Nut | M12 | 1 |
| 14 | TS-149105 | Hex Cap Screw | M10 x 35 | 1 |
| 16 | OES-043 | Bushing | | 1 |
| 17 | OES-044 | Bearing | | 1 |
| 18 | TS-1550071 | Flat Washer | M10 | 3 |
| 19 | TS-2331101 | Cap Nut | M10 | 1 |
| 20 | OES-045 | Idler Adjustment Unit | | 1 |
| 21 | OES-046 | Idler Casting | | 1 |
| 22 | OES-047 | Spherical Bearing | | 1 |
| 25 | TS-2249162 | Socket Head Button Screw | M10 x 16 | 1 |
| 26 | OES-048 | Washer | 10 x 25 x 6 | 2 |
| 28 | TS-2249252 | Socket Head Button Screw | M10 x 25 | 2 |
| 30 | TS-1540081 | Hex Nut | M12 | 2 |
| 31 | OES-049 | Tracking Screw | | 1 |
| 32 | TS-2360121 | Flat Washer | M12 | 1 |
| 33 | OES-050 | Tracking Adjust Knob | | 1 |
| 34 | OES-051 | Idler Wheel Unit | | 1 |
| 35 | OES-052 | Idler Shaft | | 1 |
| 36 | OES-053 | Bearing | 6205 | 2 |
| 37 | OES-054 | Tracking Roller | | 1 |
| 38 | OES-055 | Retaining Ring | | 1 |

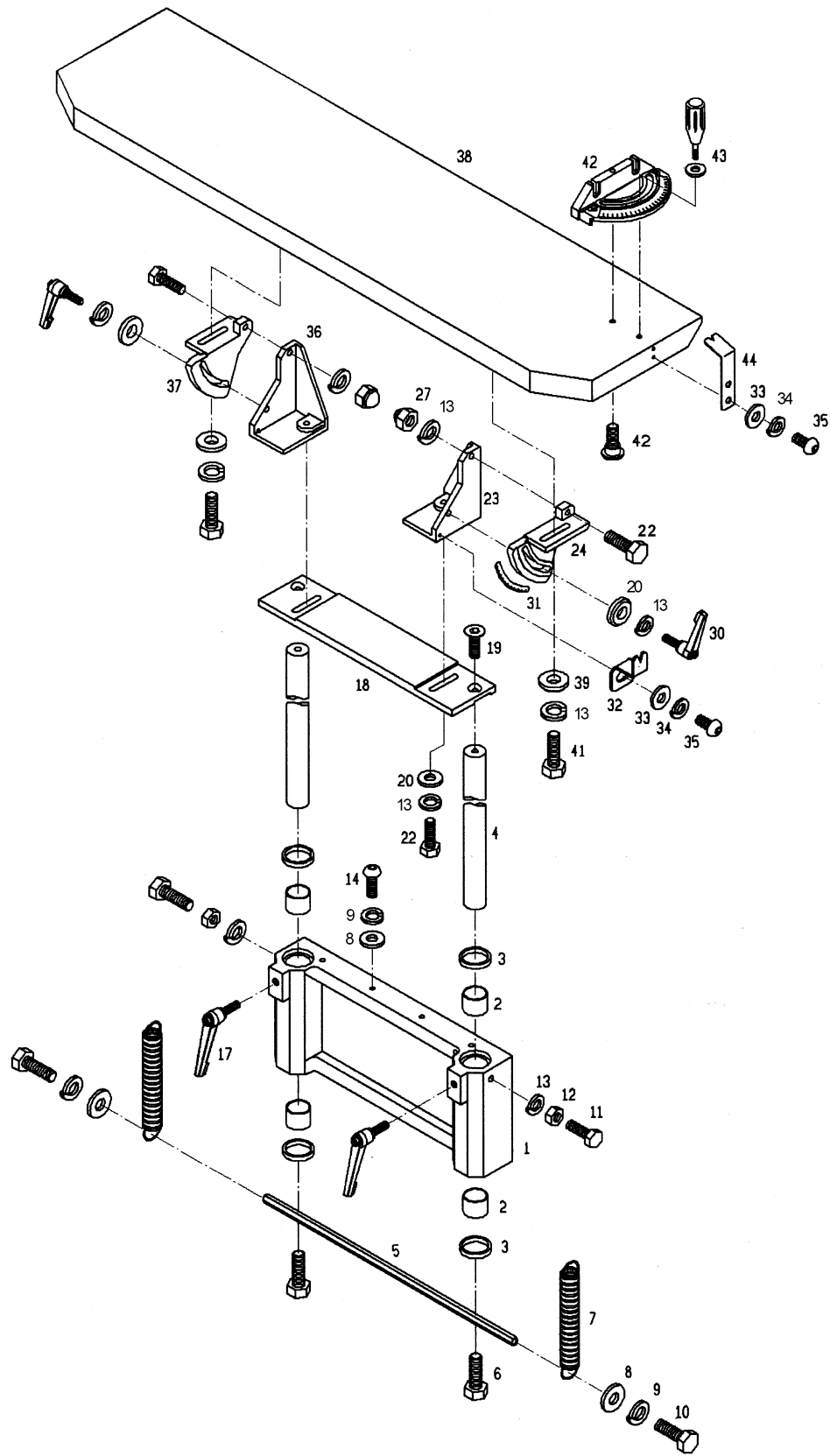
Tracking and Belt Release Unit



Parts List: Table Assembly

| Index No. | Part No. | Description | Size | Qty |
|-----------|------------|---------------------------|-------------|-----|
| 1 | OES-056 | Elevation Casting | | 1 |
| 2 | OES-057 | DU Bushing | 3025 | 4 |
| 3 | OES-058 | Seal | 35 x 50 x 8 | 4 |
| 4 | OES-059 | Table Post | | 2 |
| 5 | OES-060 | Link | | 1 |
| 6 | TS-1490051 | Hex Cap Screw | M8 x 30 | 2 |
| 7 | OES-061 | Spring | | 2 |
| 8 | TS-1550061 | Flat Washer | M8 | 6 |
| 9 | TS-1551061 | Lock Washer | M8 | 6 |
| 10 | TS-1490011 | Hex Cap Screw | M8 x 12 | 2 |
| 11 | TS-1491081 | Hex Cap Screw | M10 x 50 | 2 |
| 12 | TS-1540071 | Full Hex Nut | M10 | 2 |
| 13 | TS-1551071 | Lock Washer | M10 | 10 |
| 14 | TS-2248252 | Socket Head Button Screw | M8 x 25 | 4 |
| 17 | OES-062 | Locking Handle | | 2 |
| 18 | OES-063 | Adjustment Plate | | 1 |
| 19 | TS-1516021 | Socket Head Flat Screw | M10 x 25 | 2 |
| 20 | OES-064 | Flat Washer | 10 x 25 x 6 | 4 |
| 22 | TS-1491041 | Hex Cap Screw | M10 x 30 | 4 |
| 23 | OES-065 | Table Bracket Rt. | | 1 |
| 24 | OES-066 | Tilt Bracket Rt. | | 1 |
| 27 | TS-2331101 | Cap Nut | M10 | 2 |
| 30 | OES-067 | Locking Handle | | 2 |
| 31 | OES-068 | Angle Scale | | 1 |
| 32 | OES-069 | Angle Pointer | | 1 |
| 33 | TS-1550031 | Flat Washer | M5 | 3 |
| 34 | TS-1551031 | Lock Washer | M5 | 3 |
| 35 | TS-2245102 | Socket Head Button Screw | M5 x 10 | 3 |
| 36 | OES-070 | Table Bracket Lt. | | 1 |
| 37 | OES-071 | Tilt Bracket Lt. | | 1 |
| 38 | OES-072 | Main Table | | 1 |
| 39 | OES-073 | Washer | 10 x 25 x 6 | 2 |
| 41 | TS-149105 | Hex Cap Screw | M10 x 35 | 2 |
| 42 | OES-074 | Mitre Gauge & Dowel Screw | | 1 |
| 43 | OES-075 | Lock Handle | | 1 |
| 44 | OES-076 | Mitre Gauge Pointer | | 1 |

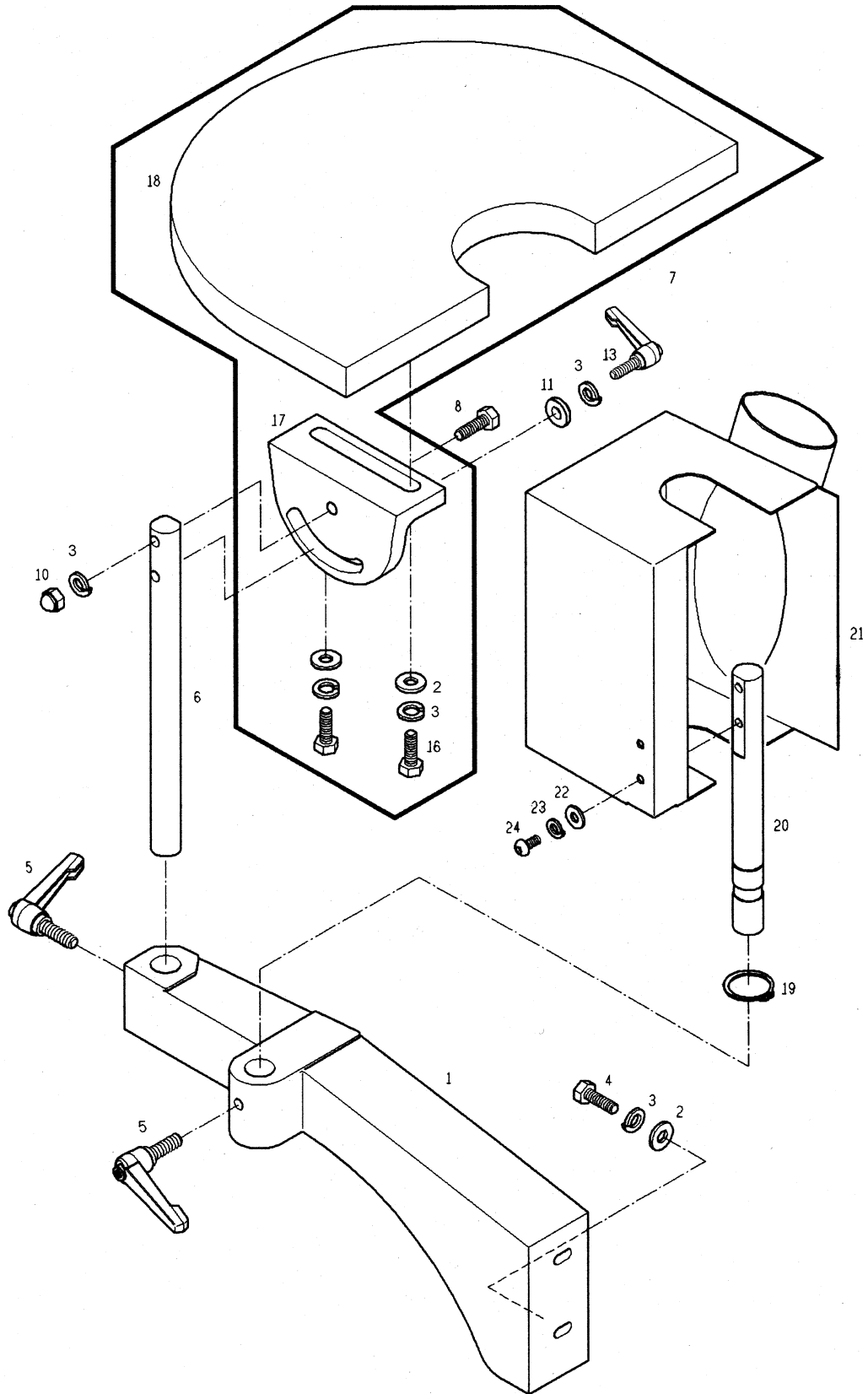
Table Assembly



Parts List: Contour Sanding Unit

| Index No. | Part No. | Description | Size | Qty |
|-----------|------------|------------------------|-------------|-----|
| 1 | OES-077 | Sanding Arm Casting | | 1 |
| 2 | TS-1550071 | Flat Washer | M10 | 4 |
| 3 | TS-1551071 | Lock Washer | M10 | 6 |
| 4 | TS-1491061 | Hex Cap Screw | M10 x 40 | 2 |
| 5 | OES-078 | Locking Handle | | 2 |
| 6 | OES-079 | Table Post | | 1 |
| 7 | OES-080 | Contour Table Unit | | 1 |
| 8 | TS-1491081 | Hex Cap Screw | M10 x 50 | 1 |
| 10 | TS-2331101 | Cap Nut | M10 | 1 |
| 11 | OES-081 | Washer | 10 x 25 x 6 | 1 |
| 13 | OES-067 | Locking Handle | M10 x 35 | 1 |
| 16 | TS-1491031 | Hex Cap Screw | M10 x 25 | 2 |
| 17 | OES-082 | Tilt Bracket | | 1 |
| 18 | OES-083 | Contour Sanding Table | | 1 |
| 19 | OES-084 | Retaining Ring | | 1 |
| 20 | OES-085 | Guard Post | | 1 |
| 21 | OES-086 | Dust Hood | | 1 |
| 22 | TS-1550061 | Flat Washer | M8 | 2 |
| 23 | TS-1551061 | Lock Washer | M8 | 2 |
| 24 | TS-2248162 | Socket Hd Button Screw | M8 x 16 | 2 |

Contour Sanding Unit



Electrical Connections – 1 Phase

