



SERVICE PARTS LIST

HOLE HAWG

Catalog No. **1675-1**

Starting Serial No. **413-1001**

Specify Catalog and Serial No. when ordering parts

BUL.54-10-4000

REVISED BUL. DATE
June '73

WIRING INSTRUCTIONS
58-01-0620

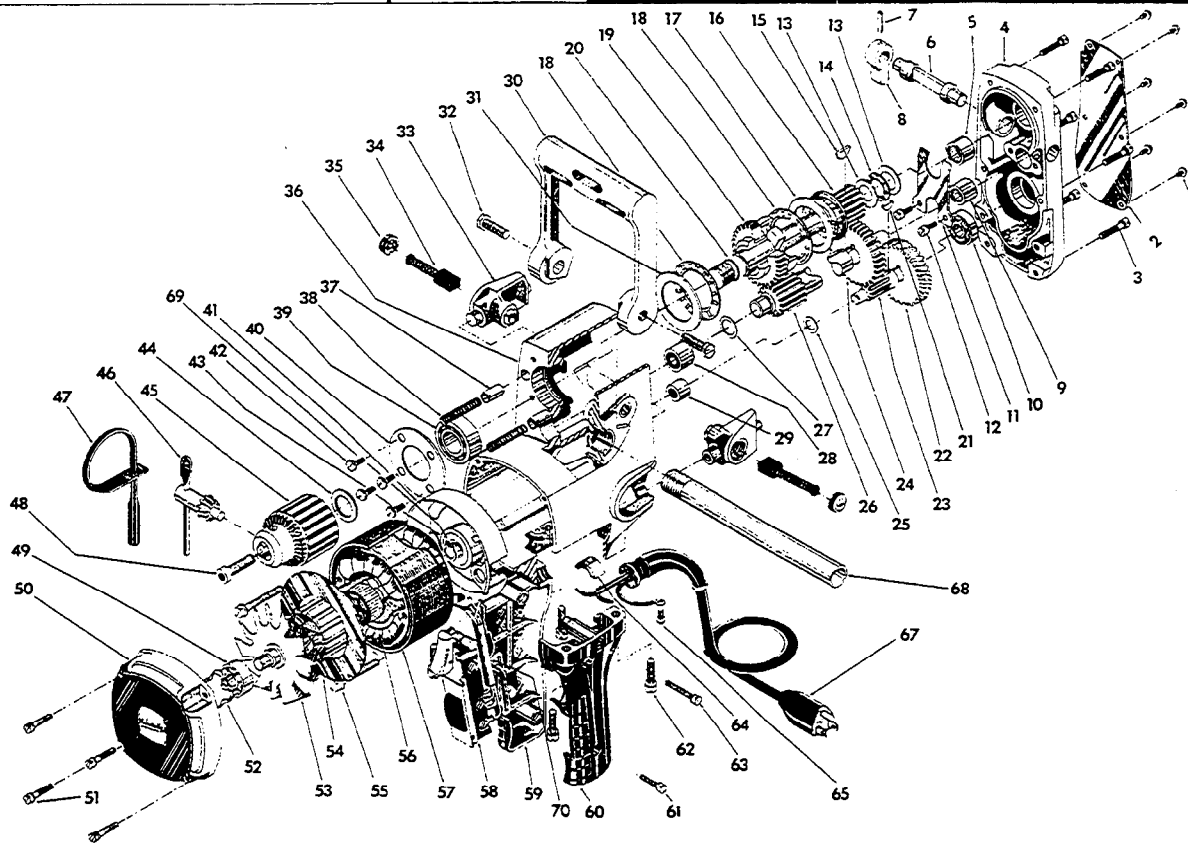


FIG.	PART NO.	DESCRIPTION OF PART	NO. REQ.
1	06-81-8200	4-36x3/16 Rd. Hd. Name Plate Scr.	(6)
2	12-98-7050	Name Plate	(1)
3	06-81-6350	8-32x1 Fil.Hd. Gear Case Cover Scr.	(6)
4	28-20-1121	Gear Case Cover	(1)
5	02-50-3170	Needle Bearing	(1)
6	42-50-0100	Shifting Cam	(1)
7	06-65-2825	1/8x5/8 Type 2 Drive Pin	(1)
8	28-60-0061	Shifting Knob	(1)
9	02-50-2750	Needle Bearing	(1)
10	02-04-0910	Ball Bearing	(1)
11	45-98-0100	Shifting Yoke	(1)
12	06-81-6050	8-32x5/16 Fil.Hd. Shifting Yoke Scr.	(2)
13	45-88-7150	Thruuster Washer	(2)
14	02-80-6020	Thrust Bearing	(1)
15	06-42-2000	No. 3 Woodruff Key	(1)
16	32-10-0132	Hi-Speed Clutch Gear Assy.	(1)
17	45-88-7140	Thrust Washer	(1)
18	02-80-1800	Thrust Bearing	(2)
19	32-10-0122	Lo-Speed Clutch Gear Assy.	(1)
20	38-50-4991	Spindle	(1)
21	06-42-1200	No. 212 Woodruff Key	(1)
22	32-42-1301	1st. Intermediate Gear	(1)
23	36-66-4071	1st. Intermediate Pinion	(1)
24	32-44-1311	2nd. Intermediate Gear	(1)
25	45-88-7100	Fiber Thrust Washer	(1)
26	36-66-4081	2nd. Intermediate Pinion	(1)
27	45-88-7095	Fiber Thrust Washer	(1)
28	02-50-3180	Needle Bearing	(1)
29	02-50-2020	Needle Bearing	(1)
30	28-44-7151	Spade Handle	(1)
31	45-88-0520	Thrust Washer	(1)
32	45-04-0380	3/8-16x1 Hex Hd. Spade Handle Scr.	(2)
33	22-22-0262	Brush Holder Assy.	(2)
34	22-18-0390	Carbon Brush Assy.	(2)
35	23-44-0120	Brush Retaining Cap	(2)

FIG.	PART NO.	DESCRIPTION OF PART	NO. REQ.
36	28-50-6101	Motor Housing Assy.	(1)
37	44-70-0160	Shifting Plunger	(2)
38	40-50-7670	Shifting Spring	(2)
39	02-04-1700	Ball Bearing	(1)
40	44-66-5241	Bearing Retainer Plate	(1)
41	31-55-0060	Coil Shield	(1)
42	06-81-5400	8-32x5/16 B inder Hd.Brg.Ret.Scr.	(4)
43	02-04-1050	Ball Bearing	(1)
44	45-88-0330	Chuck Spacer Washer	(1)
45	48-66-1380	Chuck	(1)
46	48-66-3280	Chuck Key	(1)
47	48-66-4040	Key Holder	(1)
48	06-75-3150	1/4-20x1 Soc.Hd. Chuck Ret.Scr.	(1)
49	02-04-0940	Ball Bearing	(1)
50	28-50-6111	Bearing Support Housing Assy.	(1)
51	06-81-6200	8-32x5/8 Fil.Hd.Brg. Support Hsg.Scr.(4)	(4)
52	45-88-7110	Spring Washer	(1)
53	16-62-1160	Armature Assy.	(1)
54	42-14-0150	Baffle	(1)
55	06-81-6700	8-32x1-7/8 Fil. Hd. Field Scr.	(2)
56	18-62-1120	Field Assy.	(1)
57	23-16-0430	Field Insulator	(1)
58	23-66-0750	Switch	(1)
59	31-44-0191	R.H. Drill Handle Assy.	(1)
60	31-44-0180	L.H. Drill Handle	(1)
61	06-81-6200	8-32x5/8 Fil.Hd. Handle Cover Scr.	(1)
62	06-81-7560	12-24x7/8 Fil.Hd. Handle Ret.Scr.	(4)
63	06-81-6400	8-32x1-1/8 Fil.Hd. Handle Cover Scr.	(1)
64	31-55-0070	Power Cord Shield	(1)
65	06-81-8625	6-32x1/4 Ground Scr.	(1)
67	22-64-0620	Cord Set	(1)
68	43-62-0460	Pipe Handle	(1)
69	34-60-0827	Retaining Ring	(1)
70	23-48-0100	Insulation Sleeve	(1)

MILWAUKEE ELECTRIC TOOL CORP.

13135 West Lisbon Road • Brookfield, Wisconsin 53005