



SERVICE PARTS LIST

**BULLETIN NO.
54-10-4009**

SPECIFY CATALOG NO. AND SERIAL NO. WHEN ORDERING PARTS		REVISED BULLETIN 54-10-4008	DATE Mar. '88
TWO SPEED HOLE HAWG			
CATALOG NO. 1675-1	STARTING SERIAL NO. 413-314575	WIRING INSTRUCTION 58-01-0626	

EXAMPLE:

00 Component Parts (Small #) Are Included
When Ordering The Assembly (Large #).

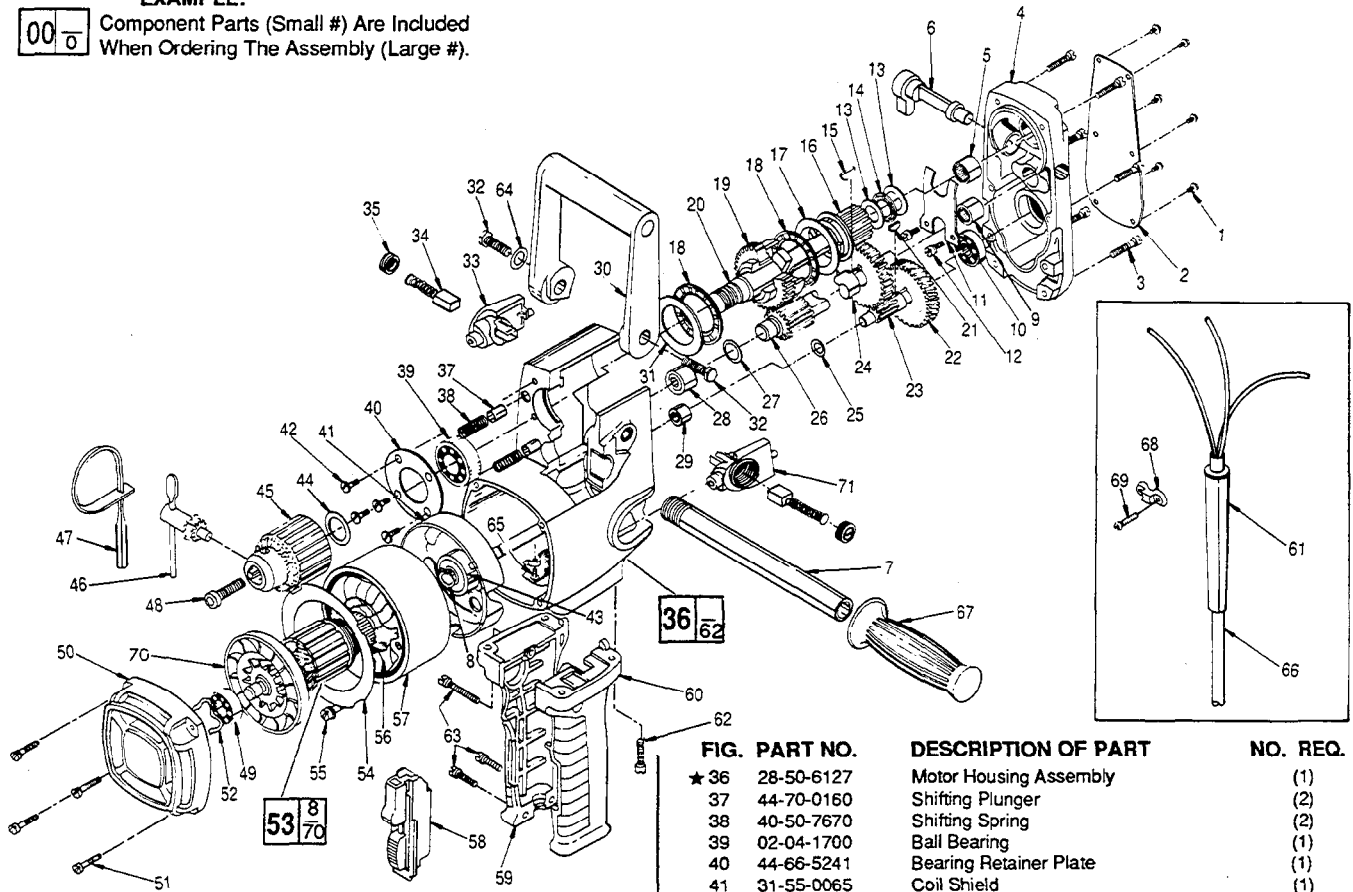


FIG.	PART NO.	DESCRIPTION OF PART	NO. REQ.
	1	06-81-8400 4-40x1/4" Rd. Hd. Nameplate Screw	(6)
	2	12-98-7050 Nameplate	(1)
	3	06-81-6350 8-32x1" Fil. Hd. Gear Case Cover Screw	(6)
	4	28-20-1122 Gear Case Cover	(1)
	5	02-50-3170 Needle Bearing	(1)
	6	31-11-0100 Shifting Cam	(1)
	7	43-62-0122 Pipe Handle	(1)
	8	34-60-0827 Retaining Ring	(1)
	9	02-50-2750 Needle Bearing	(1)
	10	02-04-0910 Ball Bearing	(1)
	11	45-98-0100 Shifting Yoke	(1)
	12	06-81-6050 8-32x5/16" Fil. Hd. Shifting Yoke Screw	(2)
	13	45-88-7150 Thrust Washer	(2)
	14	02-80-6020 Thrust Bearing	(1)
	15	06-42-2000 No. 3 Woodruff Key	(1)
	16	32-10-0132 Hi-Speed Clutch Gear Assembly	(1)
	17	45-88-7140 Thrust Washer	(1)
	18	02-80-1800 Thrust Bearing	(2)
	19	32-10-0122 Lo-Speed Clutch Gear Assembly	(1)
	20	38-50-4991 Spindle	(1)
	21	06-42-1200 No. 212 Woodruff Key	(1)
	22	32-42-1301 1st. Intermediate Gear	(1)
	23	36-66-4071 1st. Intermediate Pinion	(1)
	24	32-44-1311 2nd. Intermediate Gear	(1)
	25	45-88-7100 Fiber Thrust Washer	(1)
	26	36-66-4081 2nd Intermediate Pinion	(1)
	27	45-88-7095 Fiber Thrust Washer	(1)
	28	02-50-3180 Needle Bearing	(1)
	29	02-50-2020 Needle Bearing	(1)
	30	31-44-1100 Spade Handle	(1)
	31	45-88-0520 Thrust Washer	(1)
	32	06-75-0500 3/8-16 x 1" Hex Hd. Spade Handle Screw	(2)
★	33	22-22-1350 R. H. Brush Holder Assembly	(1)
★	34	22-18-0670 Carbon Brush Assembly	(2)
★	35	23-44-0220 Brush Retaining Cap	(2)

FIG.	PART NO.	DESCRIPTION OF PART	NO. REQ.
★	36	28-50-6127 Motor Housing Assembly	(1)
	37	44-70-0160 Shifting Plunger	(2)
	38	40-50-7670 Shifting Spring	(2)
	39	02-04-1700 Ball Bearing	(1)
	40	44-66-5241 Bearing Retainer Plate	(1)
	41	31-55-0065 Coil Shield	(1)
	42	06-81-5502 8-32x3/8" Comb. Phil. Hd. Sem.	(4)
	43	02-04-1050 Ball Bearing	(1)
	44	45-88-0330 Chuck Spacer Washer	(1)
★	45	48-66-1381 Chuck	(1)
	46	48-66-3280 Chuck Key	(1)
	47	48-66-4040 Key Holder	(1)
	48	06-75-3150 1/4-20x1" L.H. Soc. Hd. Cap Screw	(1)
	49	02-04-0911 Ball Bearing	(1)
	50	28-50-6235 Bearing Support Housing	(1)
	51	06-81-6202 8-32x5/8" Fil. Hd. Brg. Support Hsg. Scr.	(4)
	52	45-88-7110 Spring Washer	(1)
	53	16-50-0070 Armature Assembly	(1)
	54	42-14-0150 Baffle	(1)
★	55	06-95-3290 8-16x1-7/8" Plastite Pan Hd. Screw	(2)
★	56	18-50-0075 Field Assembly	(1)
	57	23-16-0425 Field Insulator	(1)
	58	23-66-1020 Switch	(1)
	59	31-44-1440 R.H. Drill Handle	(1)
	60	31-44-1445 L.H. Drill Handle	(1)
	61	44-76-0150 Cord Protector	(1)
	62	06-82-5358 12-24x3/4" Pan Hd. Taptite Screw	(4)
	63	06-82-7326 8-16x1" Plastite Screw	(3)
	64	45-88-0605 Flat Washer	(2)
	65	06-81-8625 6-32x1/4" Ground Screw	(1)
	66	22-64-0121 Cord Set	(1)
	67	43-62-0246 Handle Grip	(1)
	68	31-17-0156 Cord Clamp	(1)
★	69	06-82-7270 8-16x5/8" Pan Hd. Sit. Torx Plastite Screw	(2)
	70	22-84-0660 Fan	(1)
★	71	22-22-1355 L.H. Brush Holder Assembly	(1)
		10-98-5986 Caution Label	(1)

FIG. LUBRICATION

24 4oz. Type "E" Grease, No. 49-08-4121.
Pre-lube all needle bearings with Type "E" Grease, No. 49-08-4121.

MILWAUKEE ELECTRIC TOOL CORPORATION
13135 W. LISBON RD., BROOKFIELD, WI 53005