



# SERVICE PARTS LIST

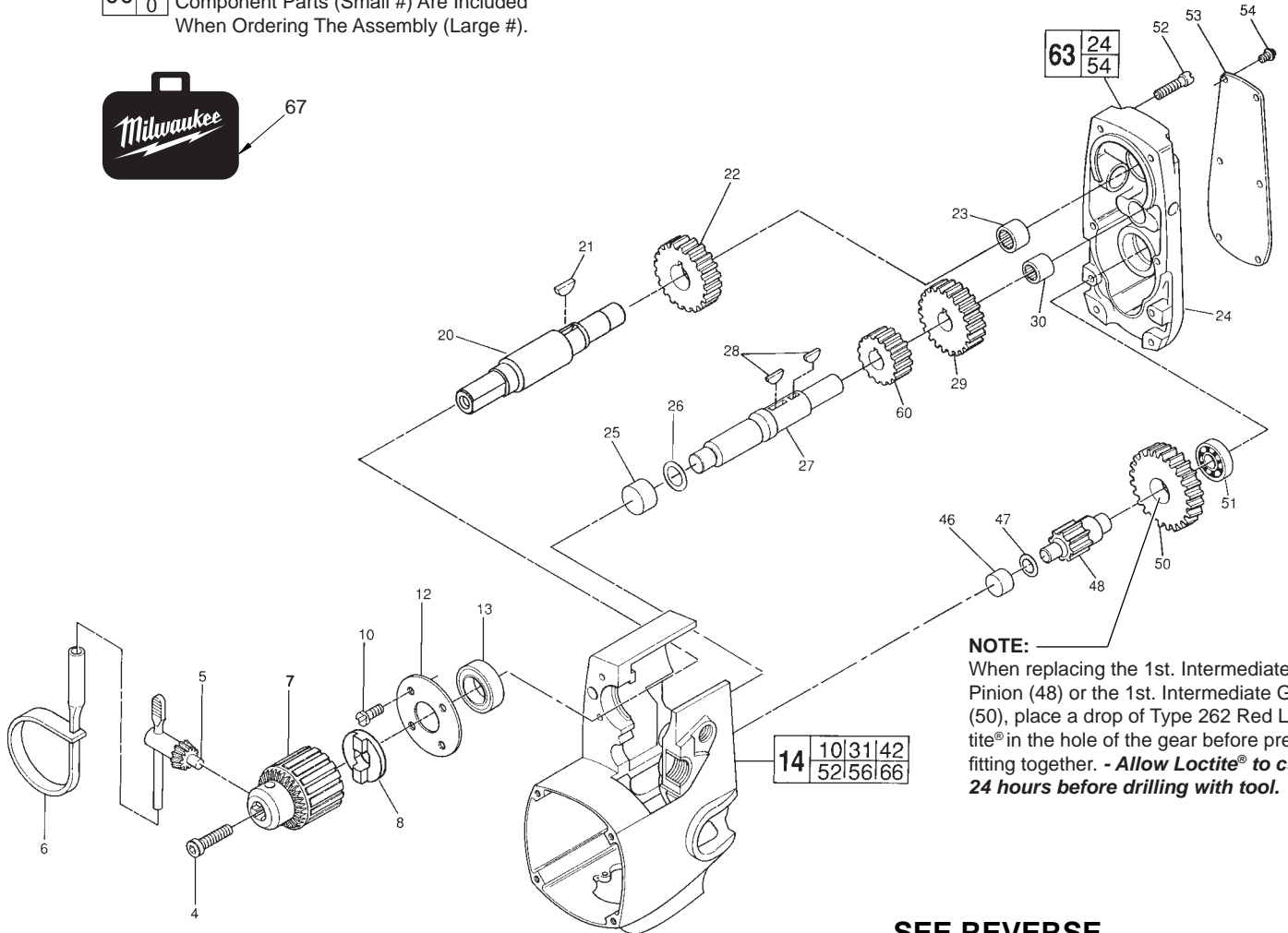
**BULLETIN NO.**  
**54-10-4039**

SPECIFY CATALOG NO. AND SERIAL NO. WHEN ORDERING PARTS		REVISED BULLETIN	DATE
<b>SINGLE SPEED HOLE HAWG®</b>		54-10-4038	Nov. 2013
		WIRING INSTRUCTION <b>58-01-0626</b>	
<b>CATALOG NO. 1670-1</b>	<b>STARTING SERIAL NO. 472E</b>		

**EXAMPLE:**  

00	0
----	---

 Component Parts (Small #) Are Included When Ordering The Assembly (Large #).



**NOTE:**  
 When replacing the 1st. Intermediate Pinion (48) or the 1st. Intermediate Gear (50), place a drop of Type 262 Red Loctite® in the hole of the gear before press fitting together. - Allow Loctite® to cure 24 hours before drilling with tool.

**SEE REVERSE SIDE**

FIG.	PART NO.	DESCRIPTION OF PART	NO. REQ.
4	06-75-3155	1/4-20 x 1" L.H. Soc. Hd. Cap Screw	(1)
5	48-66-3280	Chuck Key	(1)
6	48-66-4040	Key Holder	(1)
7	48-66-1481	Chuck	(1)
8	43-78-0670	Drive Hub	(1)
★ 10	06-82-7316	8-32 x 1/2" Pan Hd. Tapt. T-20 Screw	(4)
12	44-66-5241	Bearing Retainer Plate	(1)
13	02-04-1700	Ball Bearing	(1)
14	28-50-6129	Motor Housing Assembly	(1)
20	38-50-5075	Spindle	(1)
21	06-42-2000	Woodruff Key	(1)
22	32-75-2210	Spindle Gear	(1)
23	02-50-3170	Needle Bearing	(1)
24	28-20-1252	Gear Case Cover	(1)
25	02-50-3180	Needle Bearing	(1)
26	45-88-7095	Fiber Thrust Washer	(1)
27	36-66-4400	2nd. Intermediate Shaft	(1)
28	06-42-1900	Woodruff Key	(2)
29	32-44-1190	2nd. Intermediate Gear	(1)
30	02-50-2750	Needle Bearing	(1)
★ 46	02-50-2435	Needle Bearing	(1)
47	45-88-7100	Fiber Thrust Washer	(1)
48	36-66-1311	1st. Intermediate Pinion	(1)

FIG.	PART NO.	DESCRIPTION OF PART	NO. REQ.
50	32-42-1302	1st. Intermediate Gear	(1)
51	02-04-0910	Ball Bearing	(1)
52	06-82-5362	8-32 x 1" Pan Hd. T-20 Screw	(6)
53	12-98-7295	Service Nameplate	(1)
54	06-82-5266	4-40 x 1/4" Pan Hd. T-10 Screw	(6)
60	32-40-1970	2nd Intermediate Gear	(1)
63	28-20-1127	Gear Case Assembly	(1)
★ 67	42-55-0121	Carrying Case, Optional	(1)

**FIG. NOTES**  
 4 Torque to 150-155 in./lbs.

**FIG. LUBRICATION**  
 24 3-1/2 oz. Type "E" Grease, No. 49-08-4122.  
 Prelube all needle bearings with Type "E" Grease, No. 49-08-4122.

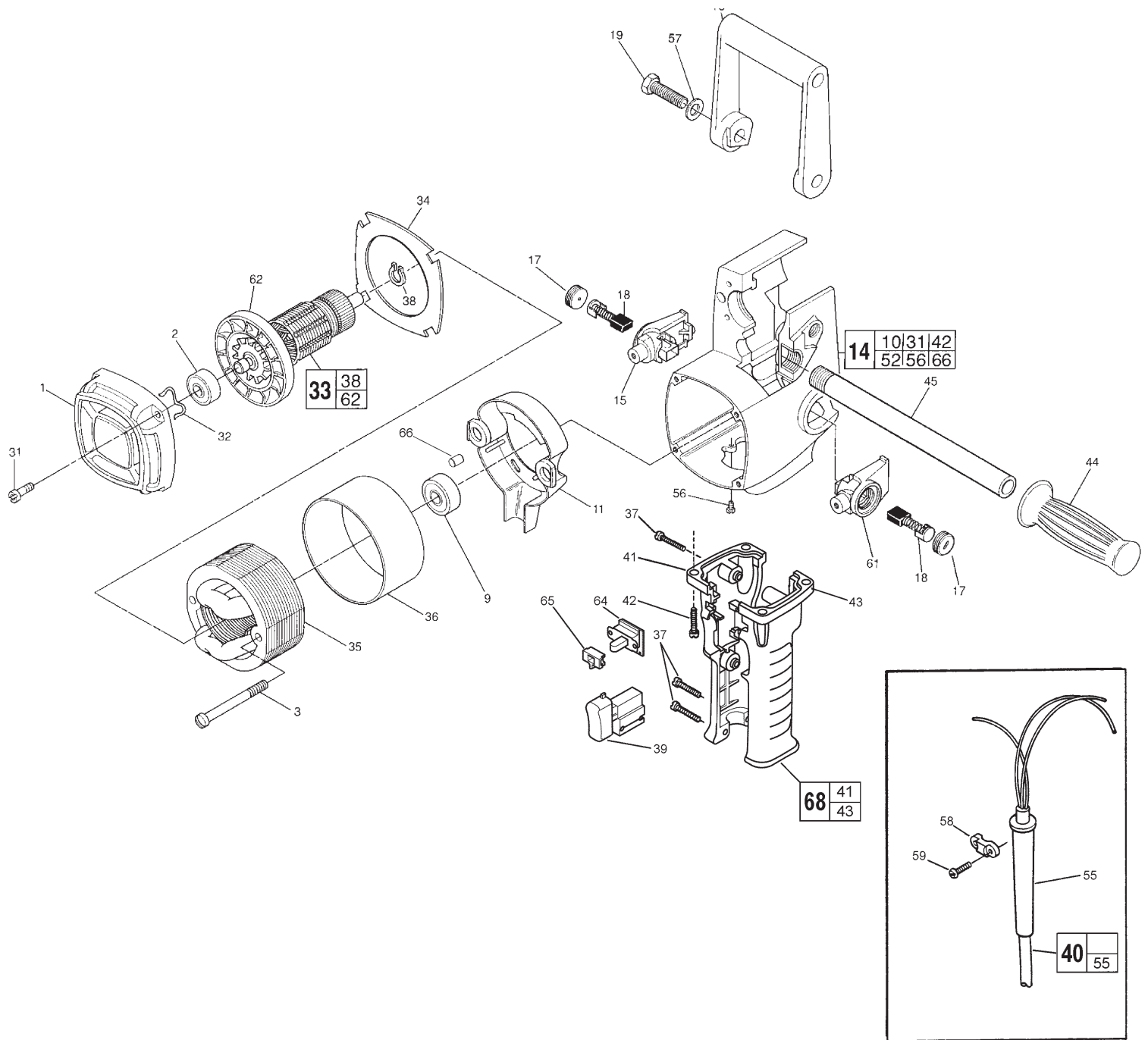


FIG.	PART NO.	DESCRIPTION OF PART	NO. REQ.
	1	Bearing Support Housing	(1)
	2	Ball Bearing	(1)
★	3	8-16 x 1.8" Pan Hd. Slit. Plast. T-20 Scr.	(2)
	9	Ball Bearing	(1)
	11	Coil Shield	(1)
	14	Motor Housing Assembly	(1)
	15	R.H. Brush Holder Assembly	(2)
	16	Spade Handle	(1)
	17	Brush Retaining Cap	(2)
	18	Carbon Brush Assembly	(2)
	19	3/8-16 x 1" Hex Hd. Spade Handle Screw	(2)
	31	8-32 x 3/4" Pan Hd. T-20 Screw	(4)
	32	Spring Washer	(1)
	33	Armature Assembly	(1)
	34	Baffle	(1)
	35	Field Assembly	(1)
	36	Field Insulator	(1)
★	37	8-16 x 1" Plastite T-20 Screw	(4)
	38	Retaining Ring	(1)
★	39	Switch	(1)

FIG.	PART NO.	DESCRIPTION OF PART	NO. REQ.
★	40	Cord Set	(1)
★	41	R.H. Drill Handle	(1)
	42	1/4-20 x 3/4" Pan Hd. Taptite T-27 Screw	(4)
★	43	L.H. Drill Handle	(1)
	44	Handle Grip	(1)
	45	Pipe Handle	(1)
	55	Cord Protector	(1)
	56	6-32 x 1/4" Ground Screw	(1)
	57	Flat Washer	(2)
	58	Cord Clamp	(1)
	59	8-16 x 5/8" Pan Hd. Slit. T-20 Plast. Screw	(2)
	61	L.H. Brush Holder Assembly	(1)
	62	Fan Assembly	(1)
★	64	Fwd./Rev. Switch	(1)
★	65	Interlock	(1)
★	66	Retaining Slug	(1)
★	68	Handle Set	(1)
★	10-98-5979	Caution Label (Not Shown)	(1)