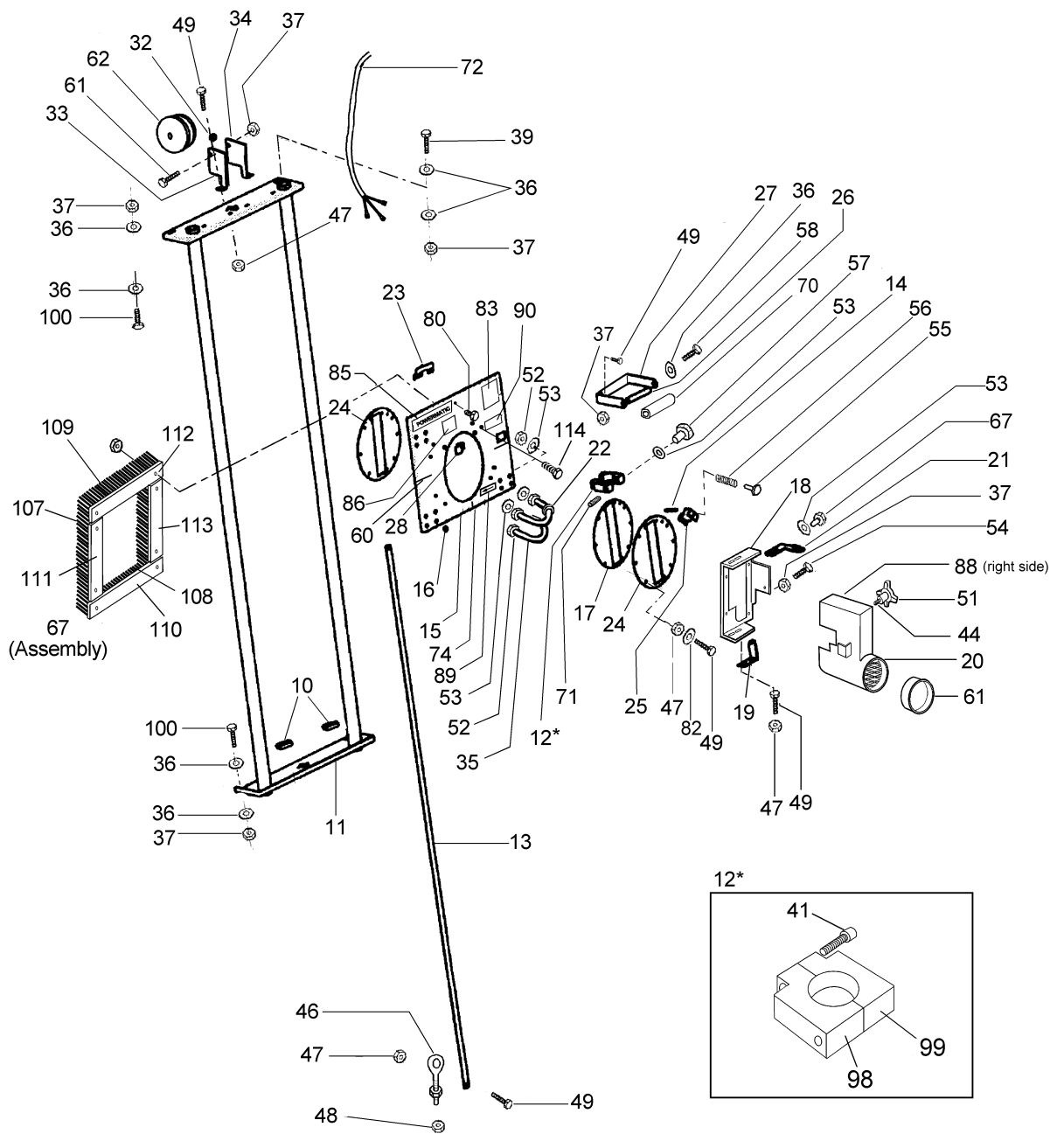


Parts List: 511 Panel Saw

Index No.	Part No.	Description	Size	Qty
	2078021	Carriage Assembly (Items 15, 17 & 24)		1
1	2218033	Frame Assembly		1
2	2423020	Leg Assembly		1
3	3064715	Leg Fold Out Bracket		2
4	3761160	Adjustable Stop		1
5	3064716	Stop Clamp Bracket		1
6	3019093	Scale Mounting Angle		2
7	3673091	Panel Roller		10
8	3745052	Roller Bushing		2
9	3578352	Roller Panel		2
10	3575079	Foam Pad		2
11	2253075	Guide Tube Assembly		1
12	3449005	Motor Carriage Lock Assembly (Items 41, 98, 99)		1
13	3596129	Scale Mounting Plate		1
14	3601213	Indexing Plunger		1
15	3079220	Motor Carriage		1
16	3575078	Bearing Wear Pad		1
17	3745049	Rotating Disc Spacer		1
18	3042513	Motor Mounting Base		1
19	3064746	Lower Mounting Bracket		1
20	2250234	Guard Assembly		1
21	3064745	Upper Mounting Bracket		1
22	3046221	Roller Bearing		216
23	2750008	Splitter Assembly		1
24	3127019	Rotating Disc		2
25	3064720	Indexing Pin Bracket		1
26	3268220	Pull Handle		1
27	3064750	Handle Bracket		1
28	3326003	Scale Indicator		1
29	3088029	Counterbalance Channel		1
31	3848016	Counter Weight		1
32	3070250	Pulley Bushing		1
33	3064741	Pulley Mounting Bracket (LH)		1
34	3064742	Pulley Mounting Bracket (RH)		1
35	6715289	U-Bolt		8
36	6861301	Flat Washer	3/8	24
37	6516002	Nylon Loc Nut	3/8-16	30
38	6716216	Screw	3/8-16 X 3-1/2	2
39	6716217	Screw	3/8-16 X 2-1/2	12
40	6516028	Wing Nut	3/8-16	2
41	6715020	Socket Head Cap Screw	5/16-18 X 1	6
42	6861200	Lock Washer	5/16	15
43	6430051	Locking Knob		1
44	6715017	Socket Set Screw	5/16-18 x 1	1
45	6108003	Caster	4"	2
46	6714270	Eyebolt	1/4-20 w/ Nut	2
47	6514022	Nylon Loc Nut	1/4-20	2
48	6514011	Jam Nut	1/4-20	1
49	6714269	Hex Head Screw	1/4-20 X 3/4	4
50	6714015	Screw	1/4-20 X 1/2	2
51	80-3133	Knob		1
52	6515001	Hex Nut	5/16-18	16
53	6861201	Flat Washer	5/16	18
54	6716030	Screw	3/8-16 X 3/4	14
55	6430052	Knob		1

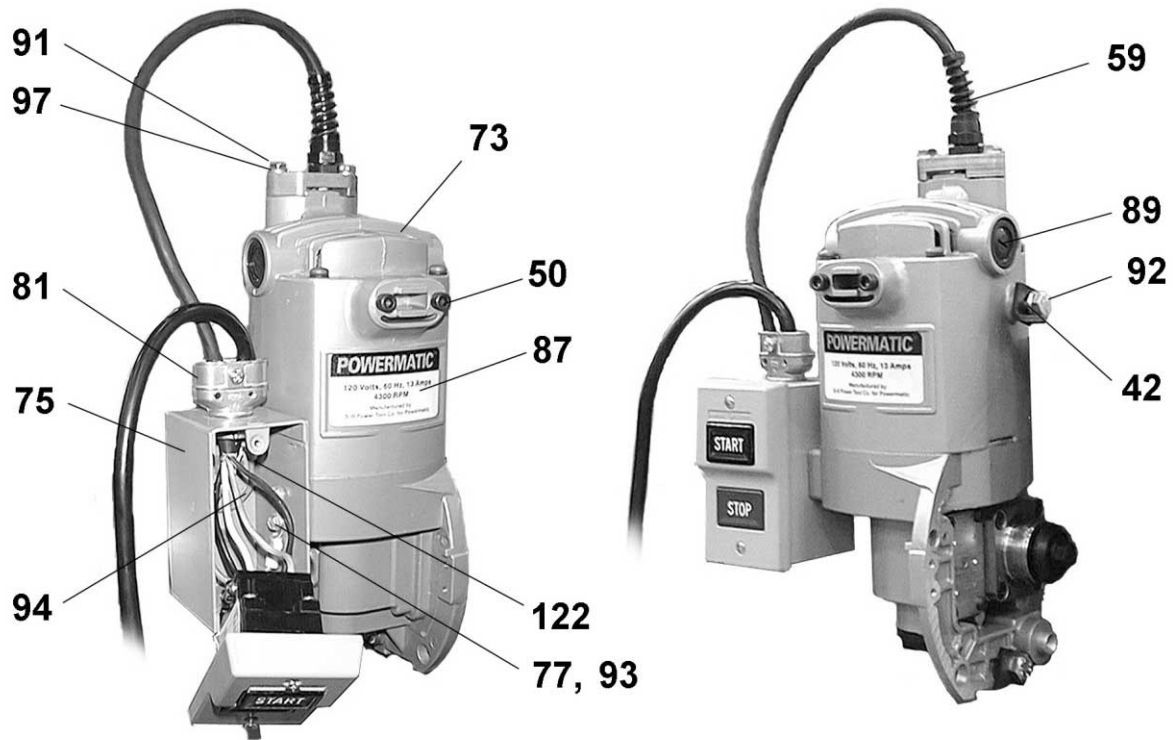
Index No.	Part No.	Description	Size	Qty
56	6813142	Spring		1
57	6430050	Locking Knob		1
58	6716218	Hex Head Screw	3/8-16 X 5	1
59	2063181	Motor Bracket Strain Relief Assembly		1
60	6823020	Indicator Stripe		2 inches
61	3598060	Tapered Plug		1
62	6646048	Counterbalance Pulley		1
63	6102053	Nylon Coated Cable		1
64	6710154	Self-Tapping Screw	#10-24	6
65	6640017	Tubing Plug		18
66	6687015	Tape Scale		2
67	3069021	Carriage Brush Assembly (Items 107 thru 113)		1
68	3076230	Roller Cam		4
69	6284104	Cable Fitting		4
70	6330009	Grip Foam Handle		1
71	6400012	Insert Threaded w/Flange	5/16-18	2
72	6164014	Cord		1
73	2475003	Motor		1
74	6811286	Shim		4
75	6821497	Pushbutton Switch		1
76	6823018	Poly Tape		5 ft.
77	6710014	Socket Head Cap Screw	#10-24 x 3/8 Lg	1
79	6861323	Nylon Washer	3/8 x 1 x 1/16	2
80	6714167	Hex Head Screw	1/4-20 x 7/8 Lg	1
81	6930004	Connector Duplex		1
82	6861101	Flat Washer	1/4	1
83	3408265	Warning Label		1
85	3312339	Label Logo		1
86	3119080	Label American Flag		1
87	3408249	Label Motor		1
88	3408248	Label Blade Rotation		1
89	3408266	Label Directional Arrow		1
91	6714048	Hex Head Screw	1/4-20 x 1	2
92	6715035	Hex Head Screw	5/16-18 x 3/4	1
93	6860802	Washer	#10	2
94	3856318	Ground Wire		1
95	6710155	Ground Screw (Green)	#10-24	1
97	6286447	Lock Washer	1/4	3
98	3449006	Lock w/ Inserts (6400012)		1
99	3449007	Lock		1
100	6716124	Hex Head Screw	3/8-16 x 2-1/2 Lg	4
102	3673092	Roller	1-1/2 wide	4
103	3064743	Support Bracket		10
104	3076235	Roller Cam		8
105	6716043	Hex Head Screw	3/8-16 x 2-3/4	10
106	2475002	Motor w/ Pushbutton Assembly (Items 50, 59, 73, 75, 77, 81, 87, 94, 95, 97)		1
107	3069022	Side Brush		2
108	3069023	Top Brush		1
109	3069024	Bottom Brush		1
110	3069025	Bottom Brush Holder		1
111	3069026	Left Side Brush Holder		1
112	3069027	Top Brush Holder		1
113	3069028	Right Side Brush Holder		1
114	6710063	Button Socket Head Cap Screw	#10-24 x 1/2	8
115	6510015	Hex (Nylon) Lock Nut	#10-24	8
116	JW1032	Hose	4"	1

Index No.	Part No.	Description	Size	Qty
117	6940064	Cable Tie		7
118	JW1317	Hose Clamp	4" (2-Ring)	1
119	JW1015	Y Fitting	4"	1
120	JW1022	Hose Clamp (Worm Drive)	4"	4
121	3064748	Hose Bracket		1
122	6821498	Ground Kit		1
123	6860801	External Tooth Washer	#10	1



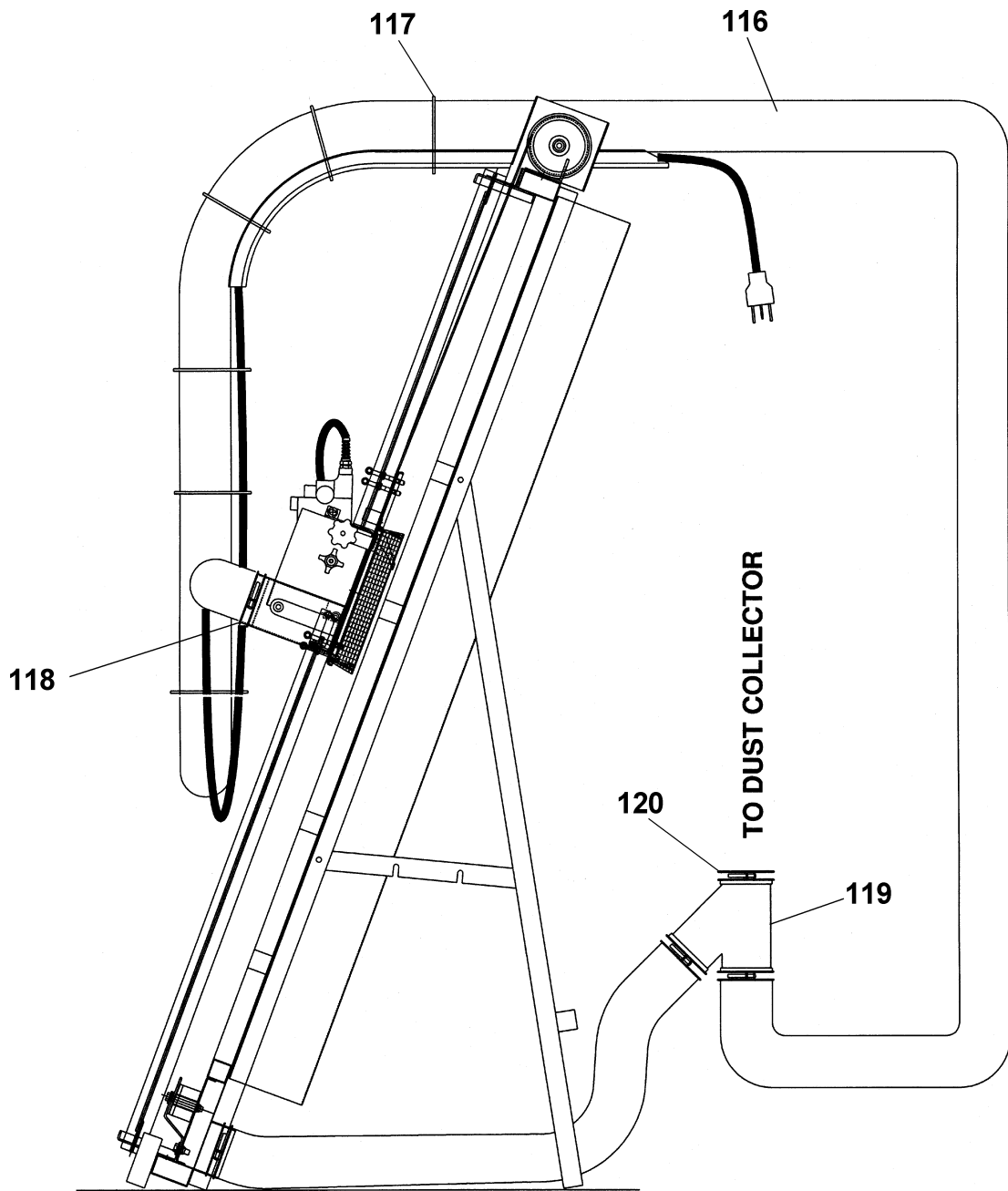
511 Panel Saw, Motor with Pushbutton Assembly 2475002

refer to parts list, pages 21-23



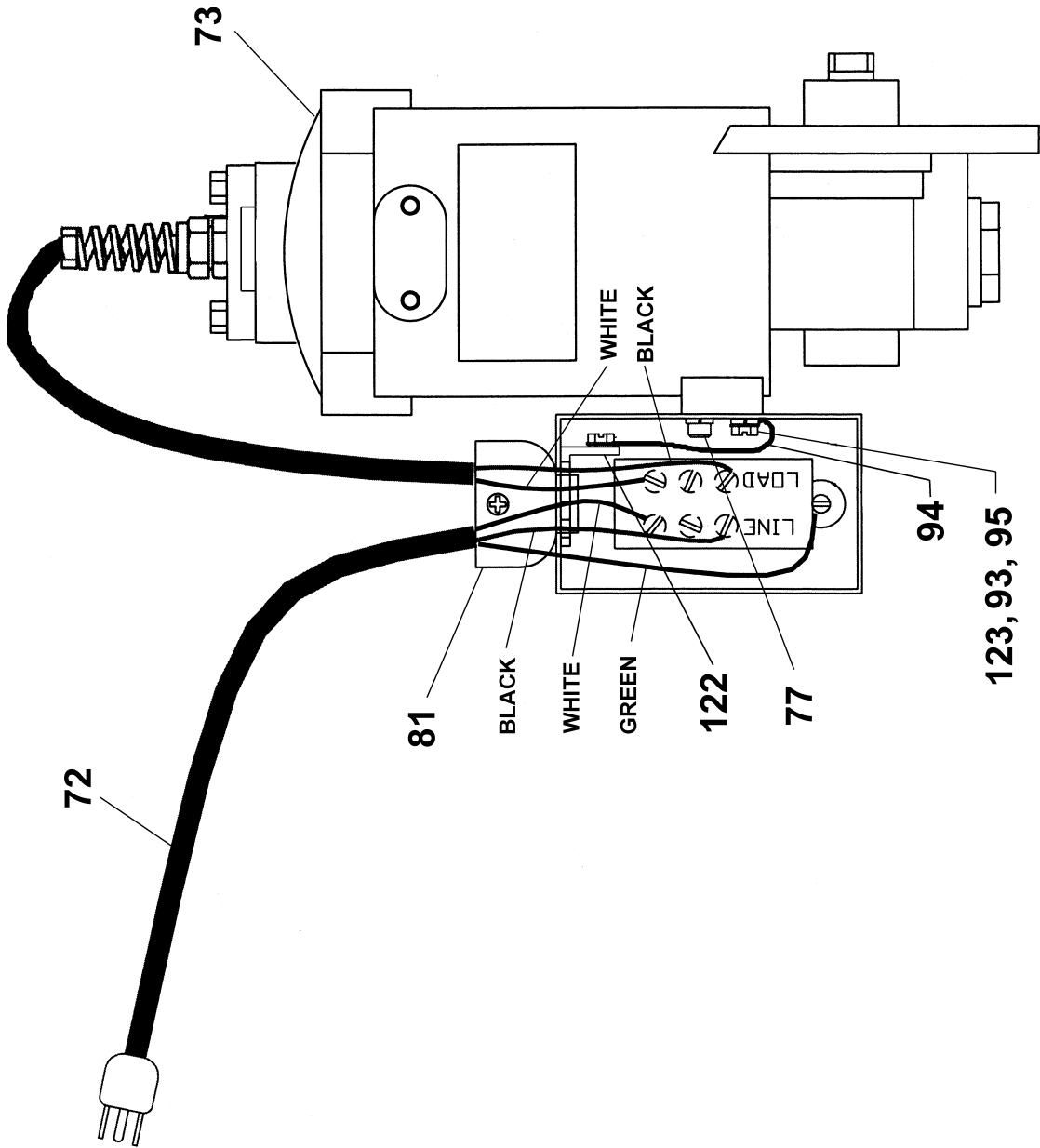
511 Panel Saw Dust Collection System

refer to parts list, pages 21-23



Electrical Connections

refer to parts list, pages 21-23



Parts List: Skilsaw, Model 586, Type 2 (511 Panel Saw)

NOTE: For all parts and service on the Skil worm drive motor, please contact the Skil service center near you from the list on page 29.

Index No.	Part No.	Description	Powermatic Part No.
1	325089	Bearing Cover	
2	23331	Washer	
3	23324	Lock Pin Bushing	
5	325655	Lock Pin	
6	44638	"O" Ring ¹	
7	23394	Spring	
8	17016	Flat Washer	
9	15726	"O" Ring ¹	
10	318324	Self Locking Nut ²	
11	17875	Ball Bearing	
13	357524	Worm & Saw Shaft Assy. ²⁺	
14	306355	Lock Washer (2)	
15	329955	Screw (2)	
16	44639	"O" Ring	
17	23384	Oil Plug	
18	341365	Screw (3)	
19	352140	Screw (2)	
20	315299	Screw (4)	
21	303855	Hood	
22	27002	Screw	
25	24748	Ball Bearing (2)	
26	23330	Seal Collar	
27	329927	Oil Seal ¹	
29	352057	Gear Housing	
30	353289	Screw (4)	
31	23335	Expansion Chamber	
32	23336	Cover Plate	
33	23318	Fan	
34	329954	Screw (4)	
35	329929	Screw	
36	166	Ball Bearing	
37	4521	Loading Spring Washer	
38	329937	Armature	
39	4341	Washer	
40	319494	Rubber Bumper	
42	316596	Terminal (3)	
43	329940	Brush Holder (2)	6861259
45	329947	Field	
46	63	Terminal (2)	
47	329958	Terminal (2)	
48	4459	Loading Spring Washer	
49	17348	Ball Bearing	
53	320173	Screw (Ground to housing)	

¹ Oil Seals and "O" rings must be prelubricated before installation.

⁺ Matched set (Ref #13).

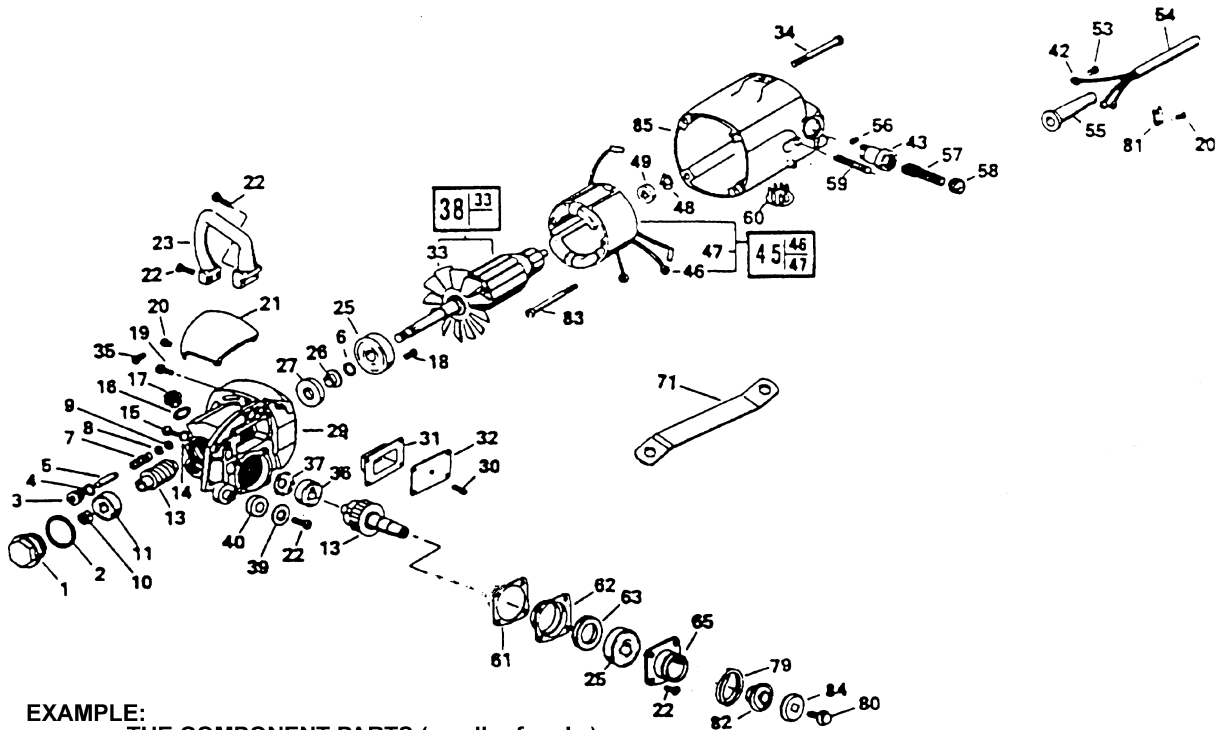
² To obtain proper nut tension, torque nut to 90-100 in. lbs. then back off 1/4 turn.

³ To replace #315286 stud in stripped housing use #13440 oversized stud.

⁴ To convert to 5/8 rd. arbor use: 6861256 outer washer and 6861257 inner washer.

Index No.	Part No.	Description	Powermatic Part No.
54	320881	Cord and Plug	
55	5970	Strain Relief	
56	27039	Set Screw (2)	
57	320391	Brush and Spring (2)	6861260
58	306278	Brush Cap (2)	6861261
59	315286	Stud ³	
60	350005	Plug Button	
61	23334	Gasket	
62	352115	Bearing Plate	
63	25245	Oil Seal ¹	
65	352091	Guard Plate	
71	266	Wrench	6861262
79	341359	Snap Ring	
80	352088	Saw Blade Bolt	6861258
81	3719	Cord Clamp	
82	352118	Inner Washer ⁴	6861257
83	329952	Screw (2)	
84	901964	Outer Washer ⁴	6861256
85	352053	Motor Housing	
	6475009	Motor	

⚠ WARNING Electrical repairs should be attempted only by trained repairmen. Contact the nearest SKIL Service Center or other competent repair service.



EXAMPLE:

38	33
----	----

 THE COMPONENT PARTS (small ref. no's.) ARE INCLUDED WHEN ORDERING THE ASSEMBLY PART (LARGE REF. NO.)

Short Panel Fence (Optional Accessory)

The Short Panel Fence is designed as an aid in cutting short panels by bringing the panel up to waist height. The Fence fits on both the left and right sides of the panel saw which gives support when cutting. Figure 23 shows the components of the Short Panel Fence.

Part No.	Description	Size	Qty.
2721005	Short Panel Fence Shelf Assembly		
3064729	Short Panel Fence Bracket R.H.		1
3064730	Short Panel Fence Bracket L.H.		1
3064731	Short Panel Fence Midway Bracket		2
3596135	Side Plate (Shelf)		2
3745051	Spacer		10
6516002	Hex Lock Nut	3/8-16	10
6687015	Tape Scale		2
6716035	Hex Head Cap Screw	3/8-16 x 1-3/4 Lg	10
6746023	Hex Washer Head Screw (Self Tapping)	1/4-20 x 5/8 Lg	10
6861301	Flat Washer	3/8	10

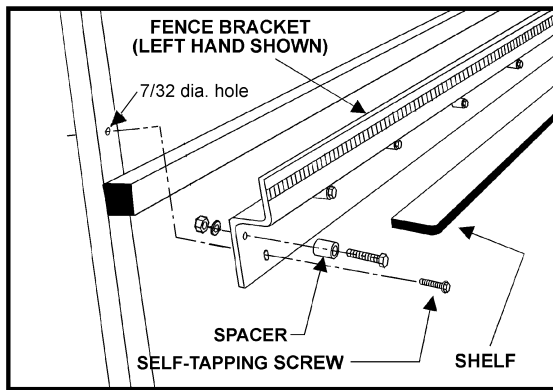


Figure 23

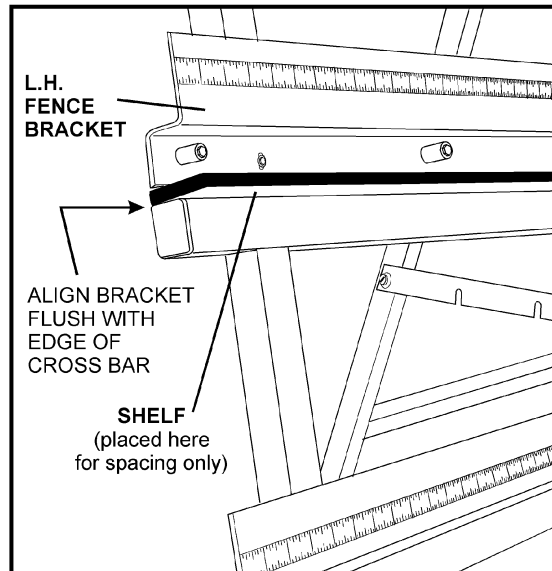


Figure 24

Installation of Short Panel Fence

Step 1:

- On the left side of the panel saw, temporarily place the fence shelf on top of the horizontal cross member of the panel saw frame which is approximately 30" from the floor. See Figure 24. This will space the left hand fence bracket the correct distance off the horizontal cross member.
- Place the left hand fence bracket (bracket with scale reading right to left) on top of the fence shelf (with the scale side of the bracket facing out).
- Align the left side of the bracket with left end of the horizontal cross member. (Note: There should be approximately a 1/2" gap between the bracket and the right end of the horizontal cross member, as shown in Figure 25).

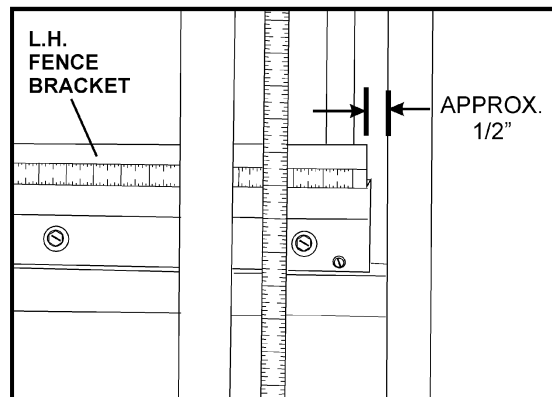


Figure 25

Optional Accessories

Part No.	Description
2721005 Short Panel Fence Shelf Assembly
6080149 CMT Saw Blade
6080150 Amana Saw Blade
6819003 Adjustable Stop (RH)
6819004 Adjustable Stop (LH)

Adjustable Stop (Optional Accessory)

The Adjustable Stop has a 66" scale and is available in right hand or left hand versions. It mounts to the bottom rail of the panel saw as shown.

