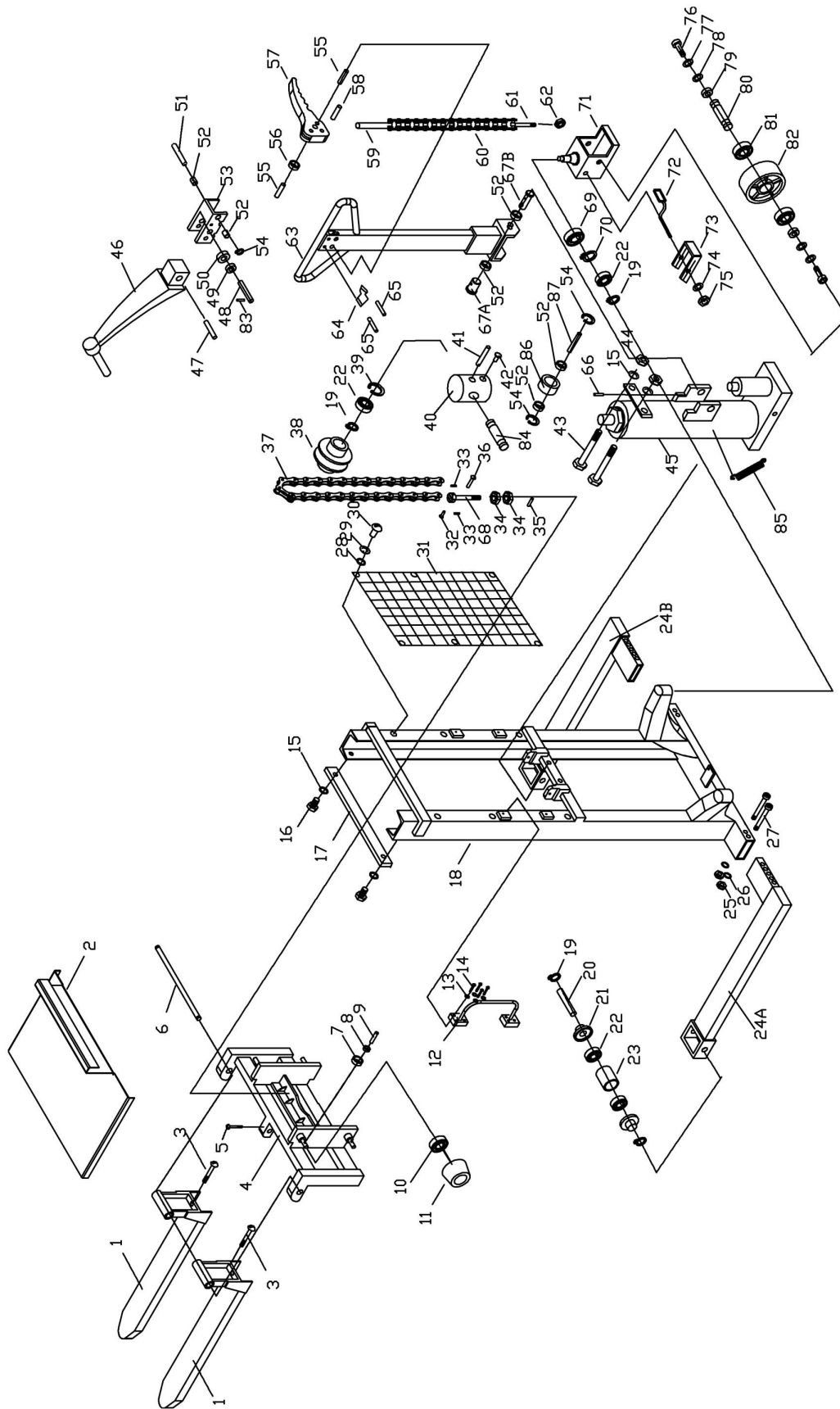


JHS-2200 Mast Assembly

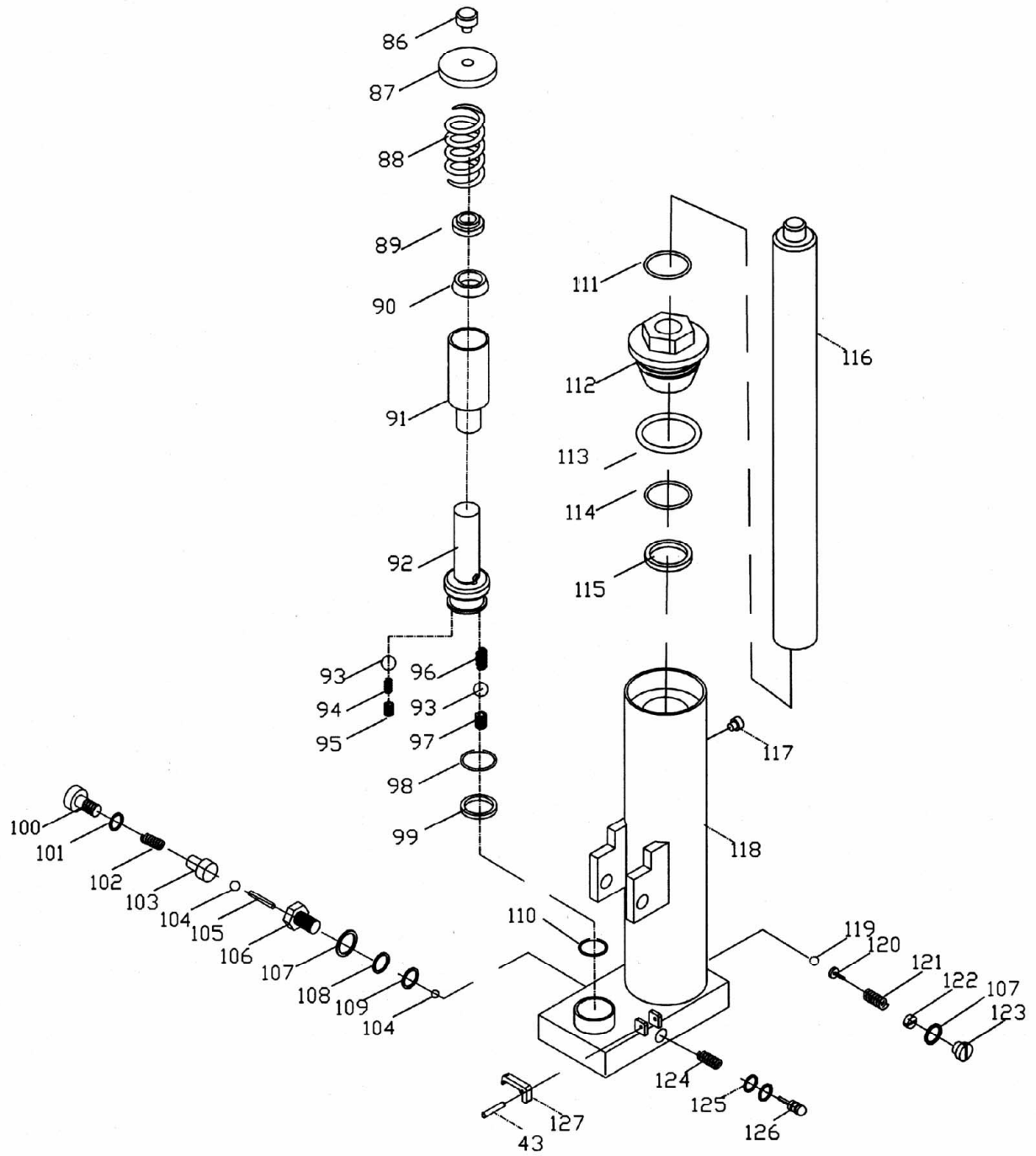


Parts List: JHS-2200 Mast Assembly

Index No.	Part No.	Description	Size	Qty
1	JHS2200-1	Fork		2
2	140523	Optional Steel Platform	28-1/4" x 41-1/2"	1
3	JHS1100-2	Adjusting Screw		2
4	JHS2200-4	Mounting Plate		1
5	JHS1100-4	Dog Point Socket Set Screw	M6 x 25	1
6	JHS2200-6	Fork Shaft		1
7	JHS1100-6	Guide Roller		4
8	JHS1100-7	Bushing	10 x 8 x 8	4
9	JHS1100-8	Guide Roller Axle		4
10	BB-6206ZZ	Ball Bearing	6206ZZ	4
11	JHS2200-11	Rolling Axle Cover		4
12	JHS1100-13A	Rubber Grip Handle		2
13	TS-1551041	Lock Washer	M6	16
14	TS-1503021	Socket Head Cap Screw	M6 x 10	16
15	TS-1551061	Lock Washer	M8	4
16	TS-1515011	Socket Head Cap Screw	M8 x 16	2
17	JHS2200-17	Bar		1
18	JHS2200-18	Mast		1
19	JHS1100-17	Snap Ring	Ø 20	8
20	JHS2200-20	Front Wheel Axle		2
21	JHS1100-18	Dust Cap		4
22	BB-6204ZZ	Ball Bearing	6204ZZ	8
23	JHS1100-20	Front Wheel		2
24A	JHS2200-24A	Left Outrigger Leg		1
24B	JHS2200-24B	Right Outrigger Leg		1
25	TS-154010	Hex Nut	M16	4
26	TS-155110	Lock Washer	M16	4
27	JHS2200-27	Hex Head Bolt	M16 x 150	4
28	TS-1550031	Flat Washer	M5	6
29	TS-1551031	Lock Washer	M5	6
30	TS-1533032	Phillips Pan Head Machine Screw	M5 x 10	6
31	JHS2200-31	Steel Fence		1
32	JHS1100-36	Link Pin		2
33	JHS1100-37	Split Pin	Ø 2 x 16	4
34	TS-2310181	Hex Nut	M18	4
35	JHS1100-40	Split Pin	Ø 4 x 30	2
36	JHS1100-41	Link Pin		2
37	JHS1100-35	Chain	12A-1 x 58	2
38	JHS1100-59	Chain Wheel		2
39	JHS1100-11	Snap Ring	Ø 47	2
40	JHS1100-60	Chain Wheel Bracket		1
41	JHS1100-61	Spring Pin	Ø 8 x 50	1
42	TS-1503051	Socket Head Cap Screw	M6 x 20	1
43	TS-1490061	Hex Cap Screw	M8 x 35	2
44	TS-1540061	Hex Nut	M8	2
45	JHS1100-85A	Hydraulic Pump Assembly		1
46	JHS1100-42	Foot Pedal		1
47	JHS1100-43	Spring Pin	Ø 8 x 30	2
48	JHS1100-45	Roller Pin		1
49	JHS1100-46	Bushing	17 x 15 x 15	1
50	JHS1100-47	Roller		1
51	JHS1100-51	Roller Axle		1
52	JHS1100-49	Bushing	18 x 16 x 8	6
53	JHS1100-50	Foot Lever		1
54	JHS1100-48	Snap Ring	Ø 12	3
55	JHS1100-52	Spring Pin	Ø 4 x 22	2

56	JHS1100-53	Roller		1
57	JHS1100-54	Lever		1
58	JHS1100-55	Spring Pin	∅ 6 x 32	1
59	JHS1100-70	Release Rod		1
60	JHS1100-70A	Chain	05B-1 x 15	1
61	JHS2200-61	Anchor Bolt		1
62	JHS1100-71	V-Nut	M6	1
63	JHS1100-56	Handle		1
64	JHS1100-57	Blocking Spring		1
65	JHS1100-58	Spring Pin	∅ 4 x 30	2
66	JHS1100-44	Spring Pin	∅ 3 x 30	2
67A	JHS1100-64A	Large Handle Pin		1
67B	JHS1100-64B	Small Handle Pin		1
68	JHS1100-38	Link Pin		2
69	BB-7205AC	Ball Bearing	7205AC	2
70	JHS1100-10	Snap Ring	∅ 25	2
71	JHS1100-72	Wheel Cover		2
72	JHS1100-75	Foot Brake		2
73	JHS1100-76	Stop Lug		2
74	TS-1550061	Flat Washer	M8	2
75	JHS1100-78	V-Nut	M8	2
76	JHS1100-79	Hex Head Bolt	M10 x 25	4
77	TS-1551071	Lock Washer	M10	4
78	TS-1550071	Flat Washer	M10	4
79	JHS1100-82	Dust Cap		4
80	JHS1100-83	Wheel Axle		2
81	BB-6205ZZ	Ball Bearing	6205ZZ	4
82	JHS1100-85	Wheel	180 x 20 x 60	2
83	JHS1100-44	Spring Pin	∅ 3 x 30	2
84	JHS1100-63	Shaft		1
85	JHS1100-69	Spring		1
86	JHS1100-65	Roller		1
87	JHS1100-66	Shaft		1
	PT2748J-JET	JET Logo Label		2
	JHS2200-ID	ID/Warning Label		1
	JWS-FW	Fork Warning Label		2
	JWS-LCW	Load Center Warning Label		1

JHS-1100 and JHS-2200 Pump Assembly



Parts List: JHS-1100 and JHS-2200 Pump Assembly

Index No.	Part No.	Description	Size	Qty
	JHS1100-85A	Hydraulic Pump Assembly (includes the following)		
43	JHS1100-43	Spring Pin	∅ 8 x 30	1
86	JHS1100-86	Bolt		1
87	JHS1100-87	Spring Cap		1
88	JHS1100-88	Spring		1
89	JHS1100-89	Dust Seal *	20 x 28 x 6	1
90	JHS1100-90	U-Ring *	20 x 28 x 5	1
91	JHS1100-91	Pump		1
92	JHS1100-92	Plunger Piston		1
93	SB-4MM	Steel Ball	∅ 4	2
94	JHS1100-94	Spring		1
95	JHS1100-95	Adjusting Screw		1
96	JHS1100-96	Spring		1
97	JHS1100-97	Adjusting Screw		1
98	JHS1100-98	Back-Up Ring *		1
99	JHS1100-99	U-Ring *	18 x 25 x 5	1
100	JHS1100-100	Release Plug		1
101	JHS1100-101	Washer		1
102	JHS1100-102	Spring		1
103	JHS1100-103	Spring Base		1
104	SB-6MM	Steel Ball	∅ 6	2
105	JHS1100-105	Pin	3 x 13.8	1
106	JHS1100-106	Release Plug		1
107	JHS1100-107	O-Ring *	13.2 x 2.65	2
108	JHS1100-108	Back-Up Ring *		1
109	JHS1100-109	Washer		1
110	JHS1100-110	Washer		1
111	JHS1100-111	Dust Seal	32 x 40 x 5.5	1
112	JHS1100-112	Cover		1
113	JHS1100-113	O-Ring *	63 x 3.55	1
114	JHS1100-114	O-Ring *	31.5 x 3.55	1
115	JHS1100-115	U-Ring *	32 x 40 x 5.5	1
116	JHS1100-116	Ram Piston		1
117	JHS1100-117	Oil Plug		1
118	JHS1100-118	Pump Body		1
119	SB-6.5MM	Steel Ball	∅ 6.5	1
120	JHS1100-120	Spring Base		1
121	JHS1100-121	Spring		1
122	JHS1100-122	Adjusting Screw		1
123	JHS1100-123	Relief Plug		1
124	JHS1100-124	Spring		1
125	JHS1100-125	O-Ring *	4.87 x 1.6	2
126	JHS1100-126	Nozzle		1
127	JHS1100-127	Cam		1
	JHS1100-RK	Pump Repair Kit (includes parts marked with *)		1