



SERVICE PARTS LIST

**BULLETIN NO.
54-08-1088**

SPECIFY CATALOG NO. AND SERIAL NO. WHEN ORDERING PARTS		REVISED BULLETIN 54-08-1087	DATE Jan. '94
1/2" REVERSING DRILL			
CATALOG NO.	1250-1	STARTING SERIAL NO.	459A
			WIRING INSTRUCTION 58-01-0212

EXAMPLE:
Component Parts (Small #)
Are Included When Ordering
The Assembly (Large #).

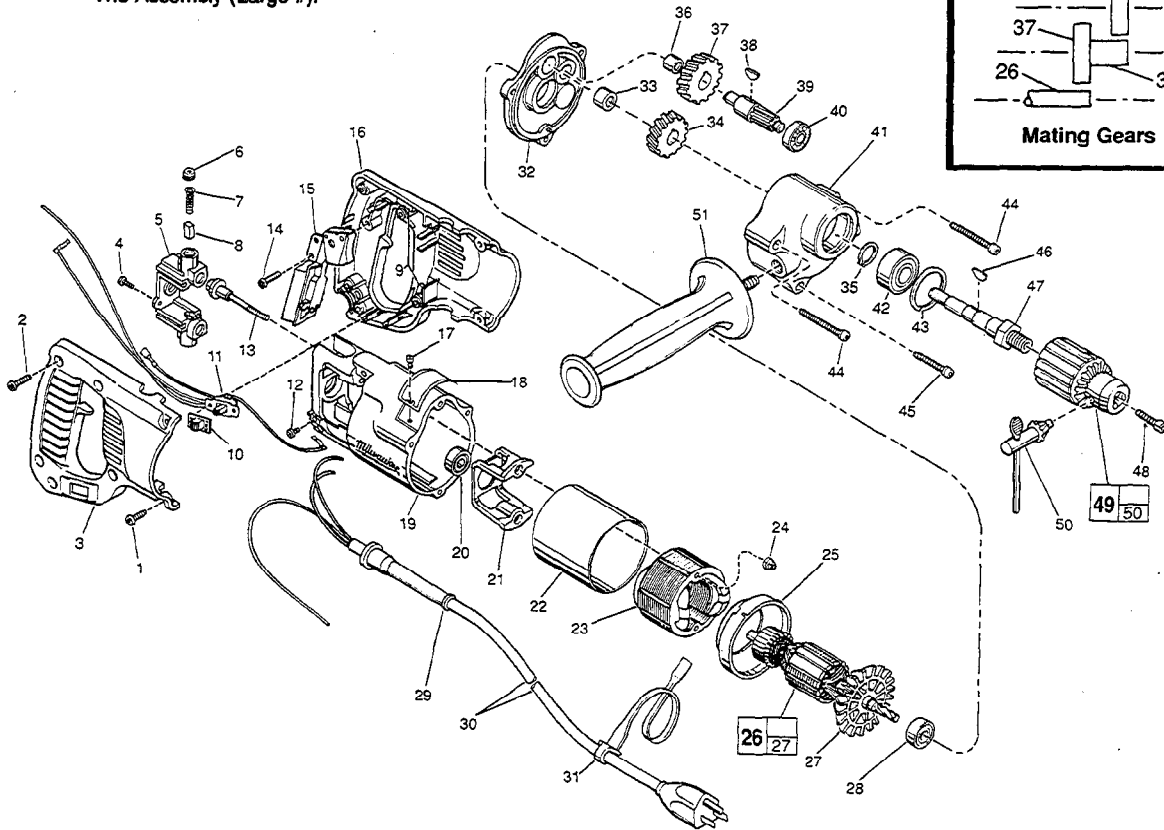
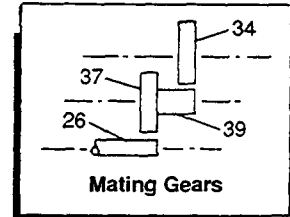


FIG.	PART NO.	DESCRIPTION OF PART	NO. REQ.
	1	06-82-5316 8-32 x 1/2" Pan Hd. Taptite T-20	(2)
★	2	06-82-7270 8-16 x 5/8" Pan Hd. Plastite T-20	(5)
★	3	31-44-1467 Right Handle Half	(1)
	4	06-95-0075 6-32 x 3/8" Truss Hd. Taptite Screw	(2)
	5	22-22-1330 Brush Holder Assembly	(1)
	6	23-44-0190 Brush Retaining Cap	(2)
	7	23-52-0160 Brush Spring	(2)
	8	22-16-0275 Carbon Brush	(2)
★	9	14-46-1001 Foam Slug Kit (10 Slugs)	(2)
★	10	31-12-0196 Switch Cap	(1)
★	11	23-66-1875 Switch Assembly	(1)
	12	06-95-5150 6-32 x 1/4" Hex Hd. Taptite Sems	(1)
	13	06-81-1058 8-32 x 2.19 Field Bolt	(2)
★	14	06-82-7270 8-16 x 5/8" Pan Hd. Plastite T-20	(1)
	15	23-66-0167 On-Off Switch	(1)
★	16	31-44-1656 Left Handle Half	(1)
★	17	06-72-1720 Nameplate Rivet	(2)
★	18	12-99-1750 Service Nameplate	(1)
★	19	28-50-6220 Motor Housing	(1)
	20	02-04-0845 Ball Bearing	(1)
	21	31-55-0030 Coil Shield	(1)
	22	23-16-0456 Field Insulator	(1)
	23	18-30-0100 120 V. Field	(1)
	24	06-57-2975 8-32 Flexlock Hex Nut	(2)
	25	31-05-0050 Baffle	(1)
	26	16-30-0225 120 V. Armature	(1)
★	27	22-84-0531 Fan Assembly	(1)
	28	02-04-0911 Ball Bearing	(1)
★	29	44-76-0210 Cord Protector	(1)

FIG.	PART NO.	DESCRIPTION OF PART	NO. REQ.
★	30	22-64-3190 Cord Set	(1)
	31	48-66-4040 Key Holder	(1)
★	32	28-28-0601 Diaphragm	(1)
	33	02-50-2440 Needle Bearing	(1)
	34	32-75-2001 Spindle Gear	(1)
	35	34-60-1200 Retaining Ring	(1)
	36	02-50-1640 Needle Bearing	(1)
	37	32-40-1241 Intermediate Gear	(1)
	38	06-42-0800 Woodruff Key	(1)
	39	36-66-2701 Intermediate Shaft	(1)
	40	02-04-0640 Ball Bearing	(1)
	41	28-14-1910 Gear Case	(1)
	42	02-04-1536 Ball Bearing	(1)
	43	34-80-2500 Retaining Ring	(1)
	44	06-82-5502 8-32 x 2-1/4" Pan Hd. Taptite T-20	(2)
	45	06-82-5404 8-32 x 1-3/8" Pan Hd. Taptite T-20	(1)
	46	06-42-1600 Woodruff Key	(1)
	47	38-50-5470 Spindle	(1)
	48	06-75-3150 1/4-20 x 1 L.H. Skt. Cap Screw	(1)
	49	48-66-1360 1/2" Chuck	(1)
	50	48-66-3280 Chuck Key	(1)
	51	43-62-0875 Side Handle	(1)

LUBRICATION:

41 3-1/4 Oz. Type "A" Grease, No. 49-08-0800.

MILWAUKEE ELECTRIC TOOL CORPORATION
13135 W. LISBON RD., BROOKFIELD, WI 53005