



SERVICE PARTS LIST

BULLETIN NO.
54-08-2065

SPECIFY CATALOG NO. AND SERIAL NO. WHEN ORDERING PARTS		REVISED BULLETIN 54-08-2064	DATE May '83
1/2" REVERSING DRILL			
CATALOG NO. 1201-1	STARTING SERIAL NO. 495-31000	WIRING INSTRUCTION 58-01-0243	
CAT. NO. 1201-6	START SER. NO. 495-31000	BILINGUAL LABEL 10-98-6400	

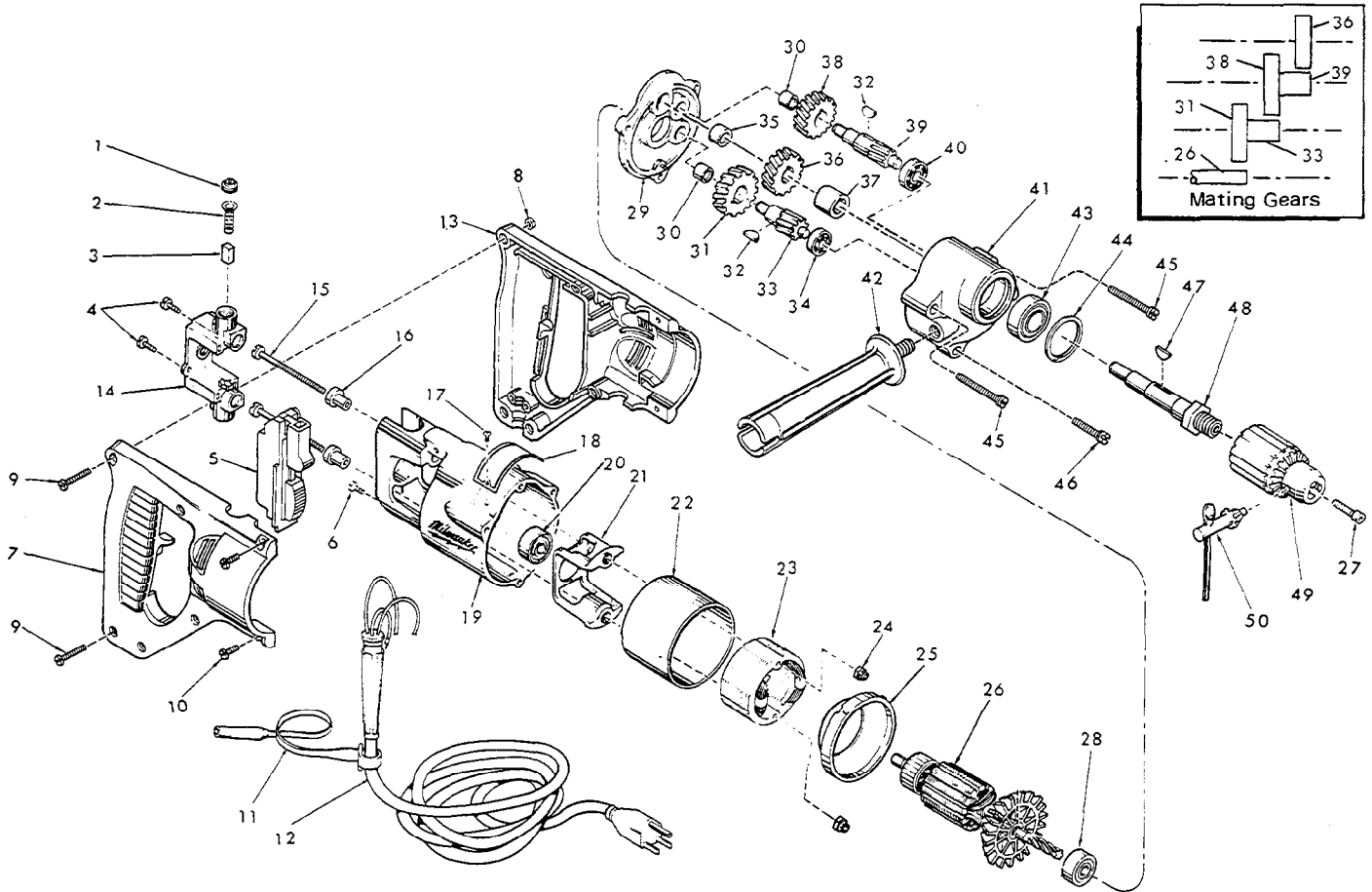


FIG.	PART NO.	DESCRIPTION OF PART	NO. REQ.	FIG.	PART NO.	DESCRIPTION OF PART	NO. REQ.
	1	23-44-0120 Brush Retaining Screw	(2)		27	06-75-3150 1/4-20x1 L.H. Skt. Hd. Cap Screw	(1)
	2	23-52-0160 Brush Spring	(2)		28	02-04-0940 Ball Bearing	(1)
	3	22-16-0250 Carbon Brush	(2)		29	28-28-0662 Diaphragm	(1)
★	4	06-95-0116 6-32 x 5/8" Pan Hd. Taptite Screw	(2)		30	02-50-1640 Needle Bearing	(2)
	5	23-66-1020 Switch	(1)		31	32-40-1241 Intermediate Gear	(1)
★	6	06-95-5150 Ground Screw	(1)		32	06-42-0800 Woodruff Key	(2)
	7	31-44-0565 R.H. Half D Handle	(1)		33	36-66-2801 Intermediate Shaft	(1)
★	8	06-55-0835 8-32 Hex Nut	(5)		34	02-04-0640 Ball Bearing	(1)
★	9	06-81-0473 8-32 x 1" Pan Hd. Pozidriv Screw	(5)		35	02-50-2110 Needle Bearing	(1)
★	10	06-95-0700 8-32 x 1/2" Pan Hd. Taptite Screw	(4)		36	32-75-2641 Spindle Gear	(1)
	11	48-66-4040 Key Holder	(1)		37	45-36-0210 Spindle Gear Spacer	(1)
	12	22-64-0405 Cord Set	(1)		38	32-75-2041 Spindle Gear	(1)
	13	31-44-0575 L.H. Half D Handle	(1)		39	36-66-3951 Intermediate Shaft	(1)
	14	22-22-0302 Brush Holder Assembly	(1)		40	02-04-0820 Ball Bearing	(1)
	15	06-81-1055 8-32x2-3/16 Field Bolt	(2)	★	41	28-14-0691 Gear Case	(1)
	16	31-86-0120 Insulating Spacer	(2)	★	42	43-62-0605 Side Handle	(1)
	17	06-85-0200 6x1/4 Rd. H.d Tupe Z Screw	(2)		43	02-04-1560 Ball Bearing	(1)
	18	12-99-0030 Nameplate	(1)	★	44	34-80-2500 Retaining Ring	(1)
	19	28-50-6147 Motor Housing	(1)		45	06-81-6707 8-32x1-7/8 Fil. Hd. Sem	(2)
	20	02-04-0891 Ball Bearing	(1)		46	06-81-6402 8-32x1-1/8 Fil. Hd. Sem	(1)
	21	31-55-0030 Coil Shield	(1)		47	06-42-1600 Woodruff Key	(1)
	22	23-16-0456 Field Insulator.	(1)		48	38-50-3651 Spindle	(1)
	23	18-30-0200 120 V. Field	(1)		49	48-66-1360 1/2" Chuck (Includes Fig. No. 50	(1)
	24	06-57-2975 8-32 Flexlock Hex Nut	(2)		50	48-66-3280 Chuck Key	(1)
	25	31-05-0050 Baffle	(1)	★	51	10-98-598 7 Warning Label (Not Shown)	(1)
★	26	16-30-0310 120 V. Armature	(1)			Omit For Canadian Tools	