



SERVICE PARTS LIST

BUL. 54-08-2200

1/2" ELECTRIC DRILL

REVISED BUL 654-1 DATE FEB. '68

MODEL NO. S-512

Starting Serial No. 54-1001

WIRING INSTR.

Both Model and Serial No. must be furnished to obtain correct parts.

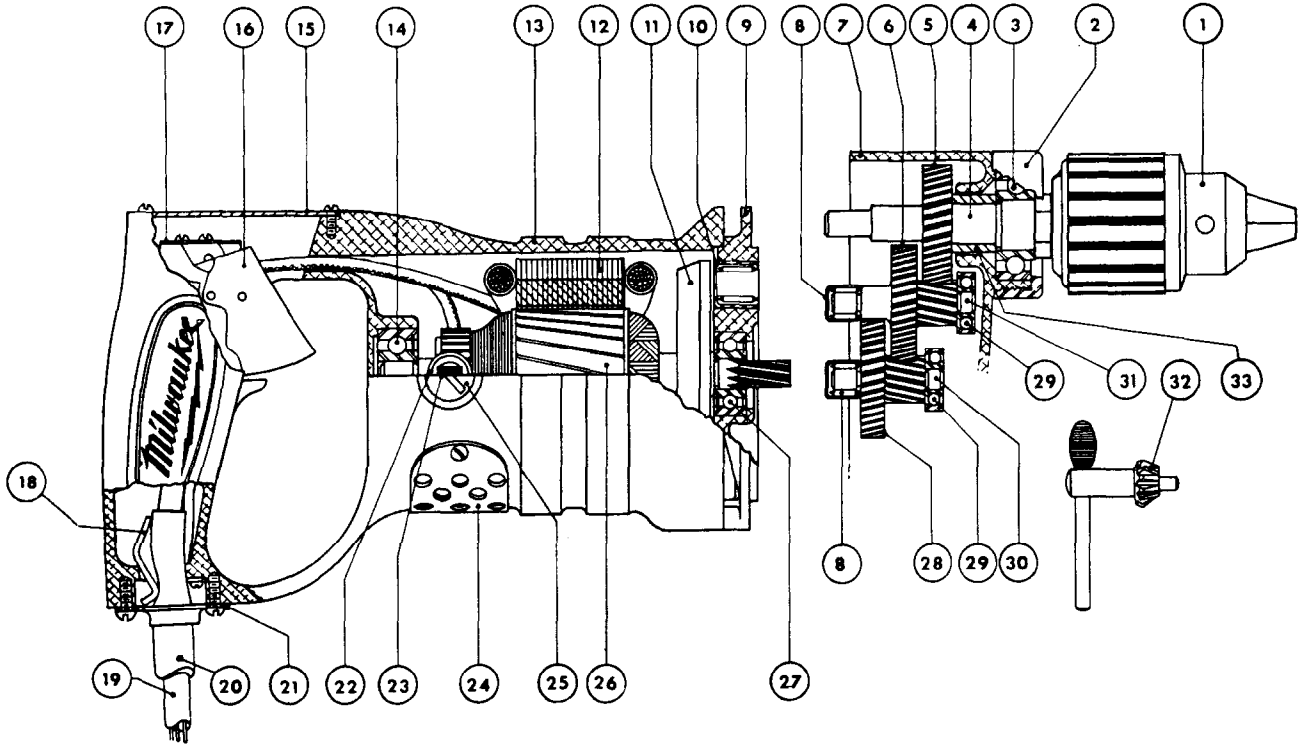


Fig.	Part No.	Name of Part
1	1/2"	Chuck (1/2-20 Thread 3-Jaw)
2	12D3-1	Bearing Cap
3	ND8502	Spindle Ball Bearing
4	42S-8	Spindle
5	22S-11	Spindle Gear
6	42S-11	Spindle Gear
7	22S-3	Gear Case
8	M-471	Intermediate Shaft Needle Bearing
9	12S-2	Diaphragm
10	MNB-31	Spindle Needle Bearing
11	12D-5	Fan (Balanced on Armature)
12	12D-700	Field Assembly
13	14S-1D	Motor Housing
14	NH9009D	Armature Ball Bearing (Comm.End)
15	S-512	Name Plate
16	8909K144	C. H. Switch
17	5SF-23	Switch Bracket

Fig.	Part No.	Name of Part
18	4MS-29	Cord Clamp
19	S#18-3	Cord (3-Wire) per foot
20	48D-28	Cord Protector Tube
21	4MS29-1	Cord Clamp Retainer
22	44D-320	Brush Holder Assembly each
23	44D-370	Carbon Brush Assemblies(per set 2)
24	22SK-41	Air Intake Cover Plate
25	44D-40	Brush Retaining Screw each
26	42S-600	Armature Assembly
27	WC8039	Armature Ball Bearing (Pinion End)
28	12D-14	Intermediate Gear
29	ND36	Intermediate Shaft Ball Brg.
30	42S-131	Intermediate Pinion Shaft
31	22S-132	Intermediate Pinion Shaft
32	1/2"	Chuck Key
33	42S8-1	Spindle Gear Spacer

MISCELLANEOUS PARTS (NOT SHOWN)

Size or Part No.	Description of Part	Quantity	Size or Part No.	Description of Part	Quantity
12D43-100	Handle	(1)	5SF-24	Switch Insulator	(1)
12D43-300	Handle Ring	(1)	6-32x3/8"	Shakeproof Cord Clamp Ret. Screws	(2)
2 Prong	Attachment Plug	(1)	6-32x1/4"	Brass Rd.Hd.Grounding Screw (Sem)	(1)
#212	Woodruff Keys	(3)	#6x1/4"	Parker Kalon Intake Cover Screws	(2)
14S1-1	Name Plate Fibre Backing	(1)	8-32x1"	Fil. Hd. Gear Case Screw (Sem)	(1)
3-48x3/16"	Rd.Hd.Name Plate Screws	(2)	8-32x1-3/4"	Fil. Hd. Gear Case Screws (Sem)	(2)
6-32x1/4"	Fil.Hd.Switch Bracket Screws(Sems)	(2)	8-32x1-3/4"	Fil. Hd. Field Screws (Sem)	(2)
6-32x1/4"	OvalHd.Switch Locating Screws	(2)	1/4-20x1/2"	Hdls. Brush Holder Set Screws	(2)
44D-34	Brush Holder Insul.Washer	(2)			

Prices are subject to change without notice