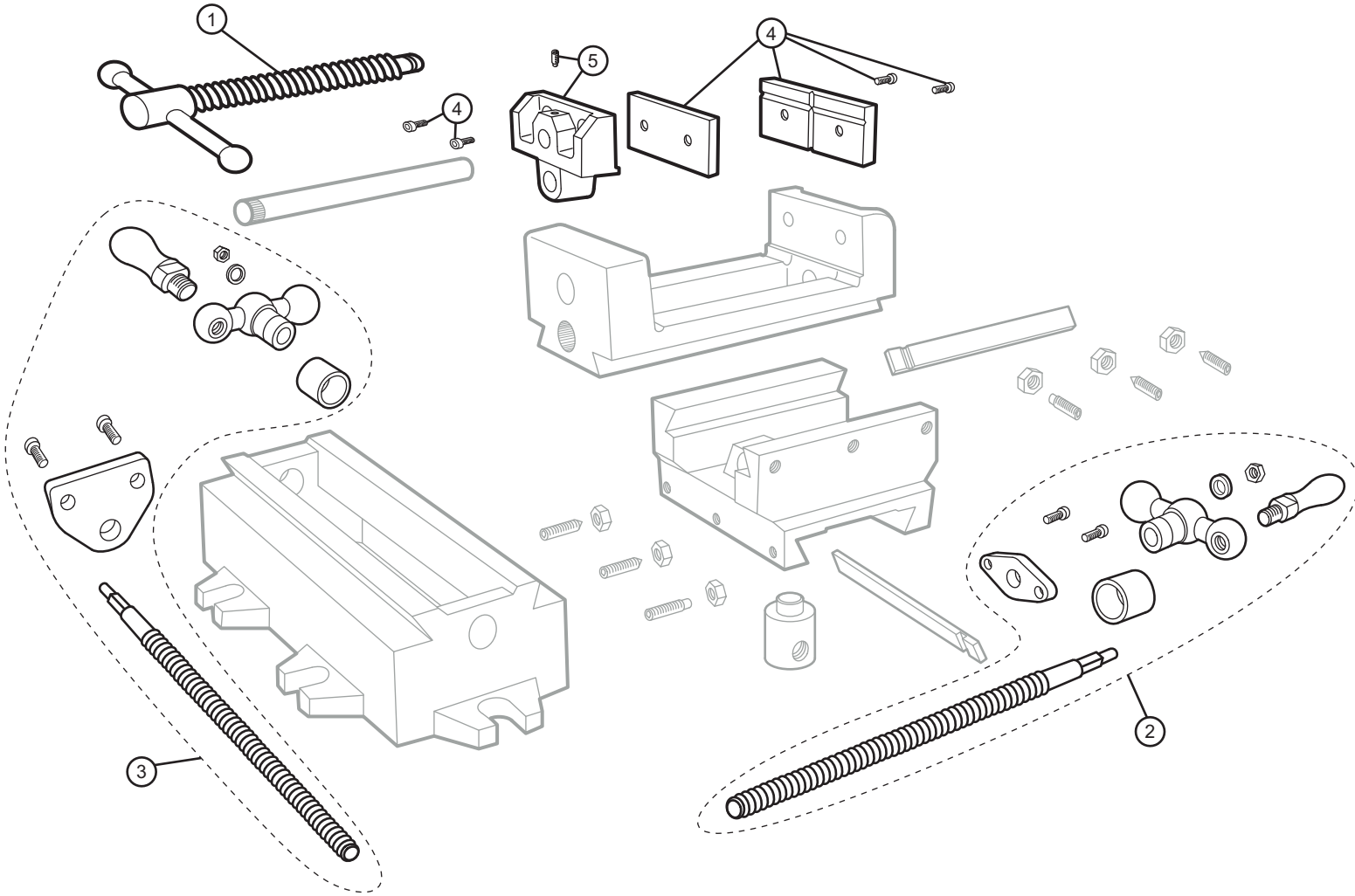




**3" Cross Slide Drill Press Vise - Parts Diagram**

3" Jaw Width, 3" Jaw Opening, 1-1/8" Jaw Depth

Stock #: 11693 Model #: CS3



#	Part	Description
1	11693-01	Handle & Spindle Assembly - 1
2	11693-02	Handle & Spindle Assembly - 2
3	11693-03	Handle & Spindle Assembly - 3
4	11693-04	Jaw Insert Assembly
5	11693-05	Moveable Jaw with Screw