



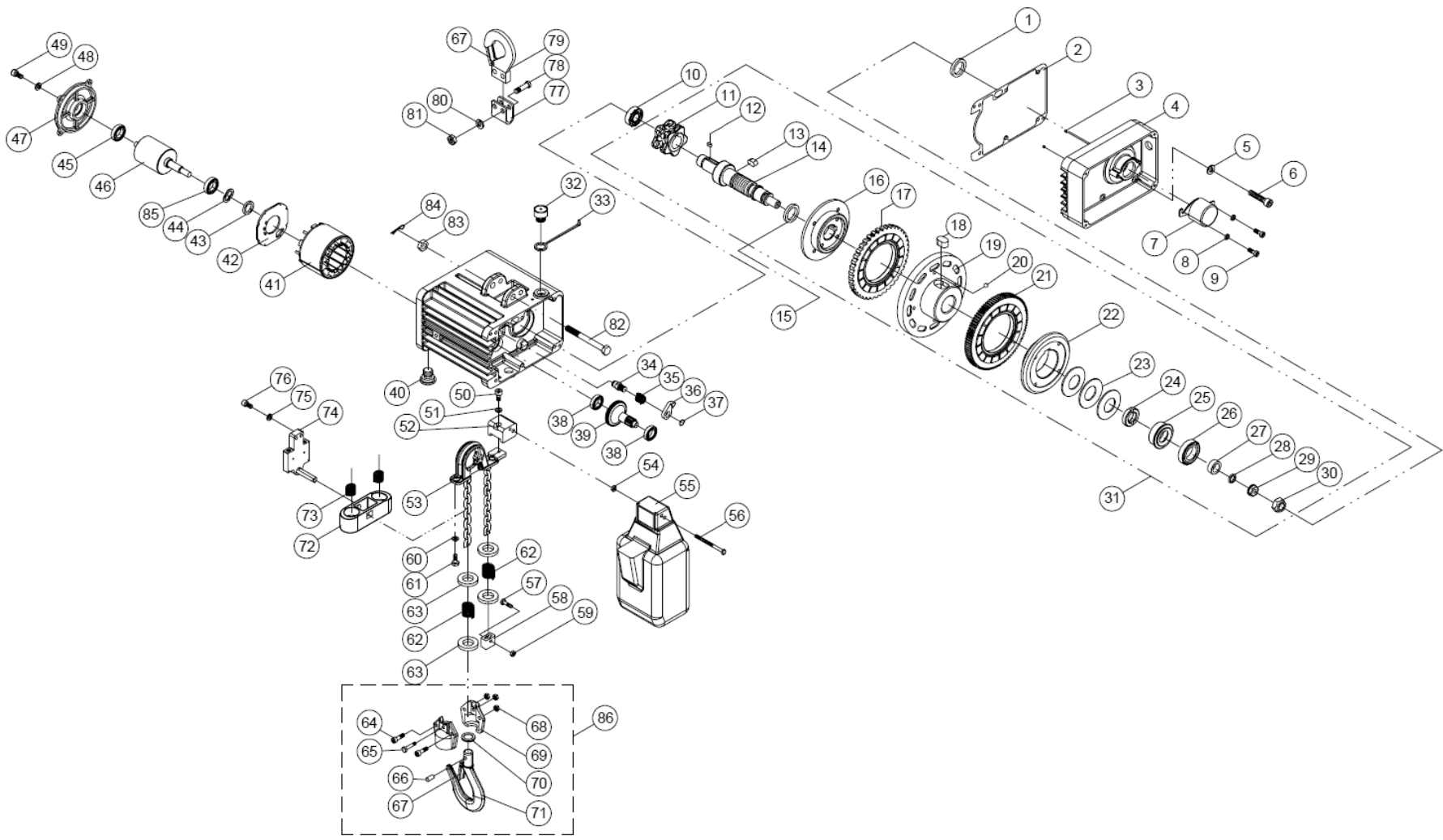
## Operating Instructions and Parts Manual BLVS Series Electric Hoists



**JET**  
427 New Sanford Road  
LaVergne, Tennessee 37086  
Ph.: 800-274-6848  
www.jettools.com

**Document No. M-104000**  
Edition 1 08/2020  
Copyright © 2020 JET

22.1.1 BLVS018 and BLVS025 Hoists – Exploded View

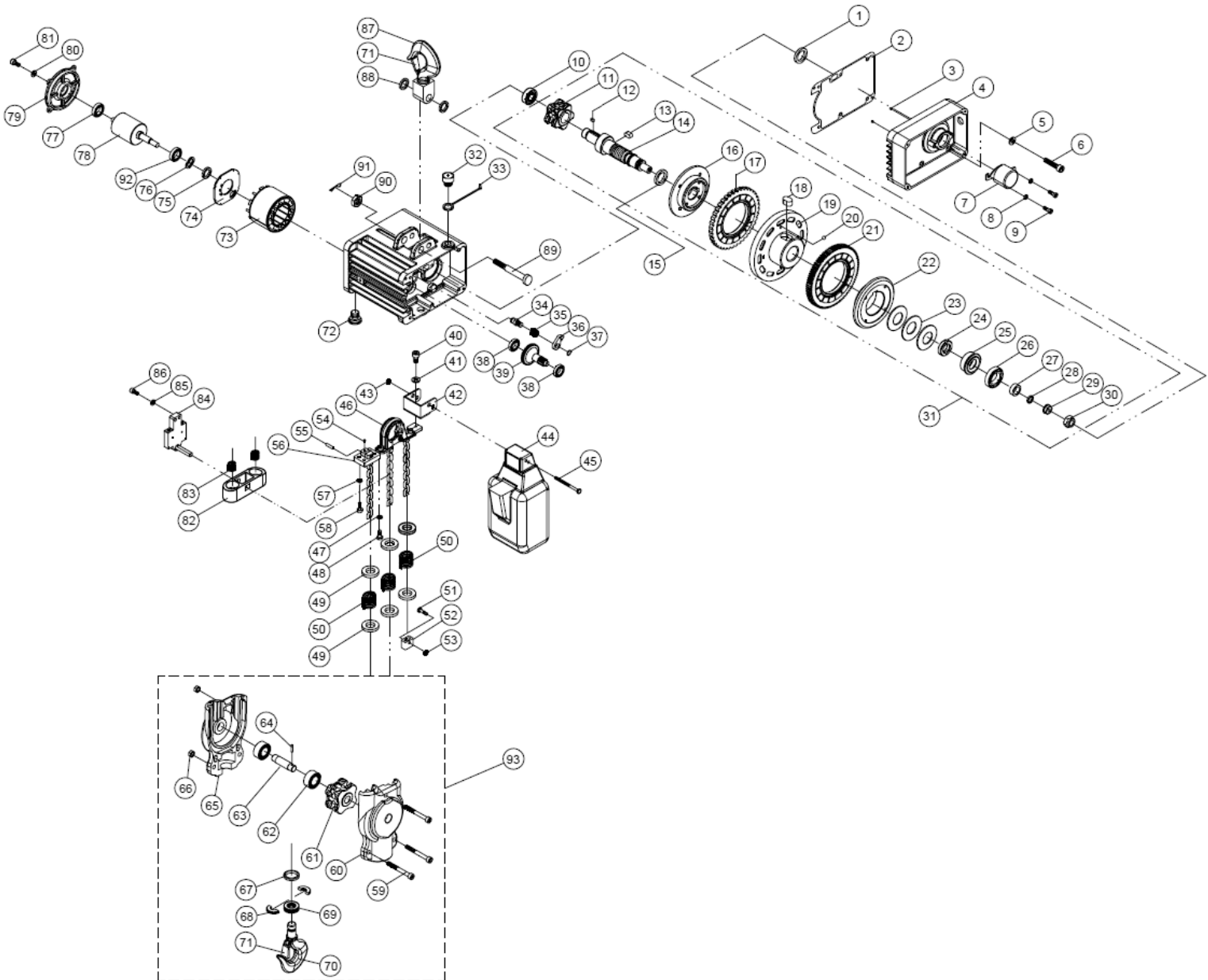


## 22.1.2 BLVS018 and BLVS025 – Parts List

Index No.	Part No.	Description	Size	Qty
1	BLVS018-A01	Oil Seal	Ø25×Ø35×5t	1
2	BLVS018-A02	Gasket	#40	1
3	BLVS018-A03	Parallel Pin	Ø5×12L	2
4	BLVS018-A04	Gearbox		1
5	TS-2361061	Spring Washer	M6	6
6	TS-1503071	Socket Hd Cap Screw	M6×1.0×30L	6
7	BLVS018-A07	Cover		1
8	TS-1550021	Flat Washer	M4	2
9	TS-2171012	Phillips Pan Hd Mach Screw	M4×0.7×6L	2
10	BB-6202ZZ	Bearing	6202 ZZ	1
11	BLVS018-A11	Load Sheave		1
12	BLVS018-A12	Key	t5×5×20L	1
13	BLVS018-A13	Key	t6×6×12L	1
14	BLVS018-A14	Sheave Spindle	Ø30×145L	1
15	BLVS018-A15	Oil Seal	Ø30×Ø50×8t	1
16	BLVS018-A16	Brake Body	Ø83×Ø20×17.5L	1
17	BLVS018-A17	Ratchet Assembly		1
18	BLVS018-A18	Key	t10×8×16L	1
19	BLVS018-A19	Brake Bushing	Ø105×27.75L	1
20	SB-6M	Steel Ball	Ø6	3
21	BLVS018-A21	4th Gear Assembly	M1.25×89T	1
22	BLVS018-A22	Brake Flange	Ø87×19.1L	1
23	BLVS018-A23	Disc Spring		3
	BLVS025-A23			-
24	BLVS018-A24	Load Brake Gear Spacer		2
25	BLVS018-A25	Bushing	Ø34×10L	1
26	BB-6003	Bearing	6003	1
27	BLVS018-A27	Oil Bushing	Ø25×Ø17×9L	1
28	BLVS018-A28	O-Ring	Ø12×Ø17×2.5	1
29	BLVS018-A29	Flange Nut	M10×1.5×8L	1
30	TS-2361101	Lock Nut	M10×1.5	1
31	BLVS018-A31	Over Load Assembly		1
	BLVS025-A31			
32	BLVS018-A32	Hex. Oil Plug		1
33	BLVS018-A33	Breather Plug		1
34	BLVS018-A34	Ratchet Pawl Pin	d14×26L	2
35	BLVS018-A35	Ratchet Pawl Spring		2
36	BLVS018-A36	Ratchet Pawl		2
37	F006098	C-Retaining Ring, Ext	S-11	2
38	BB-6000	Bearing	6000	2
39	BLVS018-A39	2nd & 3rd Gear Set		1
40	BLVS018-A40	Oil plug		1
41	BLVS018-A41	Stator Assembly	300W	1
	BLVS025-A41	Stator Assembly	600W	1
42	BLVS018-A42	Hall Sensor Plate		1
43	BLVS018-A43	Oil Seal	Ø12×Ø25×7t	1
44	BLVS018-A44	Wave Washer	31×23.2×0.3t	1
45	BB-6201ZZ	Bearing	6201ZZ	1
46	BLVS018-A46	Rotor	300W	1
	BLVS025-A46	Rotor	600W	1
47	BLVS018-A47	Motor End Cover		1
48	TS-2361051	Spring Washer	M5	4
49	TS-1502041	Socket Hd Cap Screw	M5×0.8×16L	4
50	TS-1502021	Socket Hd Cap Screw	M5×0.8×10L	1
51	TS-2361051	Spring Washer	M5	1
52	BLVS018-A52	Chain Bucket Connector		1
53	BLVS018-A53	Chain Guide		1
	LCHAIN-4x12	Load Chain	4.0x12mm	per ft.
	BLVS018-A54	Chain Puller (not shown)	4.0x12mm	1

Index No.	Part No.	Description	Size	Qty
54	TS-1541011	Lock Nut	M5	2
55	(see sect. 18.0)	Chain Container		1
56	BLVS018-A56	Socket Hd Cap Screw	M5×0.8×70L	2
57	BLVS018-A57	Lock Pin	Ø10×25.5L	1
58	BLVS018-A58	Chain Stopper	24×19×13.5	1
59	TS-1541011	Lock Nut	M5	1
60	TS-2361061	Spring Washer	M6	2
61	TS-1503041	Socket Hd Cap Screw	M6×1.0×16L	2
62	BLVS018-A62	Spring		2
63	BLVS018-A63	Buffer Steel Plate	Ø25.5×Ø14×t4	4
64	TS-1502051	Socket Hd Cap Screw	M5×0.8×20L	2
65	BLVS018-A65	Lock Pin	Ø10×25.5L	1
66	BLVS018-A66	Parallel Pin	Ø8×25L	1
67	BLVS018-A67	Safety Latch Assembly		2
68	TS-1541011	Lock Nut	M5	3
69	BLVS018-A69	Bottom Hook Cover Set		2
70	BLVS018-A70	Thrust Bearing		1
71	BLVS018-A71	Bottom Hook		1
72	BLVS018-A72	Collision Block		1
73	BLVS018-A73	Collision Block Spring		2
74	BLVS018-A74	Limit Switch Assembly		1
75	TS-2361051	Spring Washer	M5	2
76	TS-1502051	Socket Hd Cap Screw	M5×0.8×20L	2
77	BLVS018-A77	Top Hook Suspension	t20×37×39L	1
78	BLVS018-A78	Top Hook Lock Bolt	Ø12×29.5L	2
79	BLVS018-A79	Top Hook		1
80	TS-2361081	Spring Washer	M8	2
81	TS-1541031	Lock Nut	M8×1.25	2
82	BLVS018-A82	Lock Bolt	Ø12/M12×1.75×85L	1
83	TS-2342121	Hex. Nut	M12×1.75	1
84	BLVS018-A84	Cotter Pin	Ø3×30L	1
85	BLVS018-A85	Bearing	62012RS	1
86	BLVS018-A86	Bottom Hook Assembly		1

22.2.1 BLVS050 Hoist – Parts List

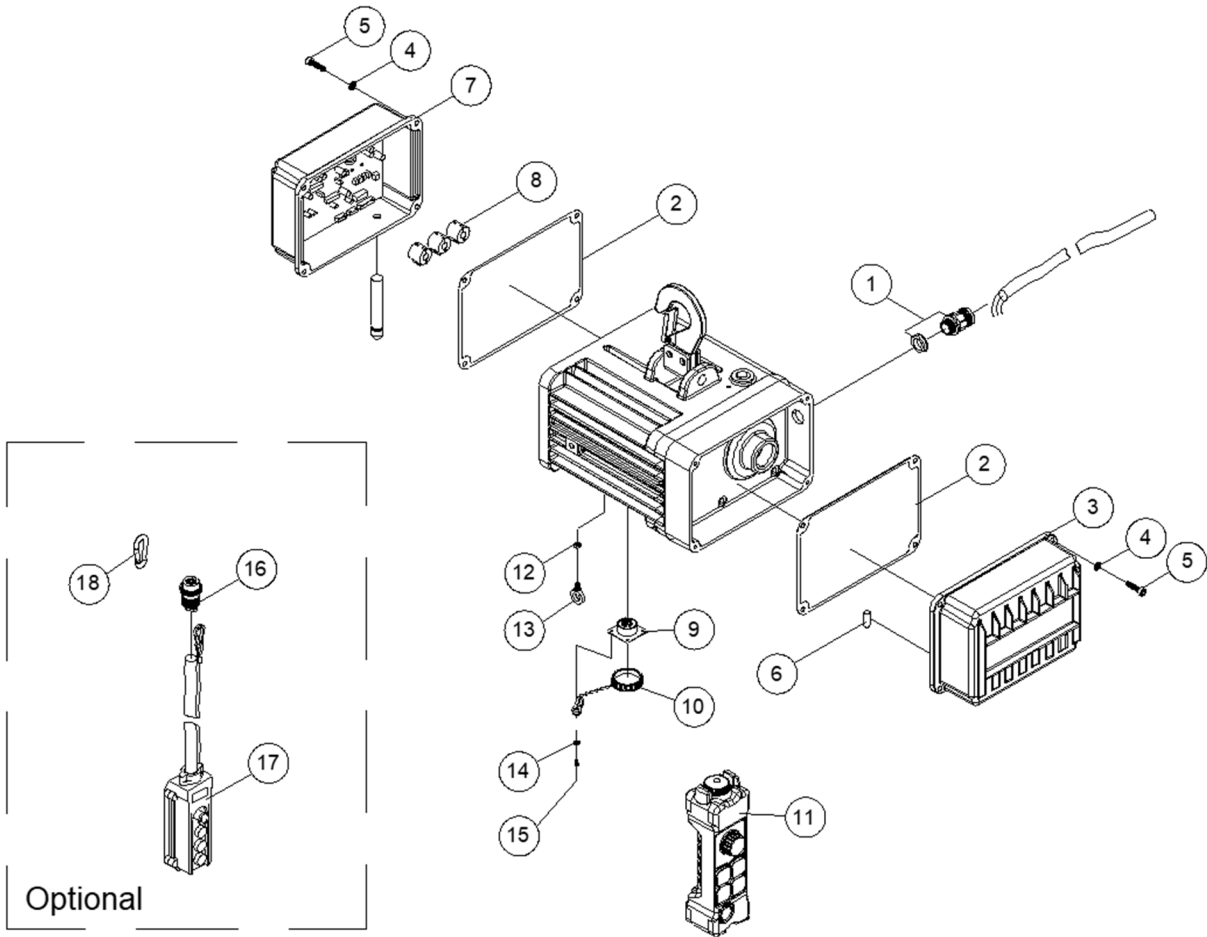


## 22.2.2 BLVS050 Hoist – Parts List

Index No.	Part No.	Description	Size	Qty
1	BLVS018-A01	Oil Seal	Ø25×Ø35×5t	1
2	BLVS018-A02	Gasket	#40	1
3	BLVS018-A03	Parallel Pin	Ø5×12	2
4	BLVS018-A04	Gearbox		1
5	TS-2361061	Spring Washer	M6	6
6	TS-1503071	Socket Hd Cap Screw	M6×1.0×30L	6
7	BLVS018-A07	Cover		1
8	TS-1550021	Flat Washer	M4	2
9	TS-2171012	Phillips Pan Hd Mach Screw	M4×0.7×6L	2
10	BB-6202ZZ	Bearing	6202ZZ	1
11	BLVS018-A11	Load Sheave		1
12	BLVS018-A12	Key	t5×5×20L	1
13	BLVS018-A13	Key	t6×6×12L	1
14	BLVS018-A14	Sheave Spindle	Ø30×145L	1
15	BLVS018-A15	Oil Seal	Ø30×Ø50×8t	1
16	BLVS018-A16	Brake Body	Ø83×Ø20×17.5L	1
17	BLVS018-A17	Ratchet Assembly		1
18	BLVS018-A18	Key	t10×8×16L	1
19	BLVS018-A19	Brake Bushing	Ø105×27.75L	1
20	SB-6MM	Steel Ball	Ø6	3
21	BLVS018-A21	4th Gear Assembly	M1.25×89T	1
22	BLVS018-A22	Brake Flange	Ø87×19.1L	1
23	BLVS050-A23	Disc Spring		3
24	BLVS050-A24	Load Brake Gear Spacer		2
25	BLVS050-A25	Bushing	Ø34×10L	1
26	BB-6003	Bearing	6003	1
27	BLVS018-A27	Oil Bushing	Ø25×Ø 17×9L	1
28	BLVS018-A28	O-Ring	Ø12×Ø17×2.5	1
29	BLVS018-A29	Flange Nut	M10×1.5×8L	1
30	TS-2342101	Lock Nut	M10×1.5	1
31	BLVS018-A31	Over Load Assembly		1
32	BLVS018-A32	Hex. Oil Plug		1
33	BLVS018-A33	Breather Plug		1
34	BLVS018-A34	Ratchet Pawl Pin	d14×26L	2
35	BLVS018-A35	Ratchet Pawl Spring		2
36	BLVS018-A36	Ratchet Pawl		2
37	F006098	C-Retaining Ring, Ext	S-11	2
38	BB-6000	Bearing	6000	2
39	BLVS018-A39	2nd & 3rd Gear Set		1
40	TS-1502021	Socket Hd Cap Screw	M5×0.8×10L	1
41	TS-2361051	Spring Washer	M5	1
42	BLVS018-A52	Chain Bucket Connector		1
43	TS-1541011	Lock Nut	M5	2
44	(see sect. 18.0)	Chain Container		1
	LCHAIN-4x12	Load Chain	4.0x12mm	per ft.
	BLVS018-A54	Chain Puller (not shown)	4.0x12mm	1
45	BLVS018-A56	Socket Hd Cap Screw	M5×0.8×70L	2
46	BLVS018-A53	Chain Guide		1
47	TS-2361061	Spring Washer	M6	2
48	TS-1503041	Hex. Recess Bolt	M6×1.0×16L	2
49	BLVS018-A63	Buffer Steel Plate	Ø25.5×Ø 14×t4	6
50	BLVS018-A62	Spring		3
51	BLVS018-A65	Lock Pin	Ø10×25.5L	1
52	BLVS018-A58	Chain Stopper	24×19×13.5	1
53	TS-1541011	Lock Nut	M5	1
54	BLVS050-A54	Threaded Stud	M4×0.7×4L	1
55	BLVS050-A55	Parallel Pin	Ø5×25L	1
56	BLVS050-A56	Load Bracket		1
57	TS-2361051	Spring Washer	M5	4
58	TS-1502041	Socket Hd Cap Screw	M5×0.8×15L	4

Index No.	Part No.	Description	Size	Qty
59	TS-1502051	Socket Hd Cap Screw	M5×0.8×20L	3
60	BLVS050-A60	Bottom Block Cover A		1
61	BLVS050-A61	Sprocket		1
62	BLVS050-A62	Needle Bearing	HK1412	2
63	BLVS050-A63	Sprocket Axle		1
64	BLVS050-A64	Spring Pin	Ø3×10L	1
65	BLVS050-A65	Bottom Block Cover B		1
66	TS-1541011	Nylon Nut	M5	3
67	BLVS050-A67	End Spacer		1
68	BLVS050-A68	Half Spacer		2
69	BB-51103	Thrust Bearing	51103	1
70	BLVS050-A70	Bottom Hook		1
71	BLVS050-A71	Safety Latch Assembly		2
72	BLVS018-A40	Oil plug		1
73	BLVS025-A41	Stator Assembly	600W	1
74	BLVS018-A42	Hall Sensor Plate		1
75	BLVS018-A43	Oil Seal	Ø12×Ø25×7t	1
76	BLVS018-A44	Wave Washer	31×23.2×0.3t	1
77	BB-6201ZZ	Bearing	6201ZZ	1
78	BLVS025-A46	Rotor	600W	1
79	BLVS018-A47	Motor End Cover		1
80	TS-2361051	Spring Washer	M5	4
81	TS-1502041	Socket Hd Cap Screw	M5×0.8×16L	4
82	BLVS018-A72	Collision Block		1
83	BLVS018-A73	Collision Block Spring		2
84	BLVS018-A74	Limit Switch Assembly		1
85	TS-2361051	Spring Washer	M5	2
86	TS-1502051	Socket Hd Cap Screw	M5×0.8×20L	2
87	BLVS050-A87	Top Hook Assembly		1
88	BLVS050-A88	Washer		2
89	BLVS050-A89	Lock Bolt	Ø15/M12×1.75x85L	1
90	TS-1540081	Hex. Nut	M12×1.75	1
91	BLVS018-A84	Cotter Pin	Ø3×30L	1
92	BB-62012RS	Bearing	6201 2RS	1
93	BLVS050-A93	Bottom Hook Assembly		1

### 22.3.1 BLVS018, 025, 050 Hoist – Exploded View



### 22.3.2 BLVS018, 025, 050 Hoist – Parts List

Index No.	Part No.	Description	Size	Qty
1	BLVS018-B01	Cable Gland	M16	1
2	BLVS018-B02	Gasket	#41	2
3	BLVS018-B03	PFC Power Supply Assembly		1
4	TS-2361051	Spring Washer	M5	8
5	TS-1502041	Socket Hd Cap Screw	M5×0.8×16L	8
6	BLVS018-B06	Fuse	6×30-20A	1
7	BLVS018-B07	DC Motor Controller Assembly		1
8	BLVS018-B08	Magnetic Clip		3
9	BLVS018-B09	Female Receptacle		1
10	BLVS018-B10	Metal Dust Cap		1
11	140192	Wireless Controller		1
12	TS-1540041	Nut	M6x1.0	1
13	BLVS018-B13	Eye Bolt	M6x1.0	1
14	BLVS018-B14	Flat Washer	M3	1
15	TS-2283102	Phillips Pan Hd Mach Screw	M3×0.5×10L	4
16	BLVS018-B16	Male Receptacle (Optional)		1
17	(see sect. 18.0)	Wired Pendant Control (Optional)		1
18	BLVS018-B18	Carabiner (Optional)		1