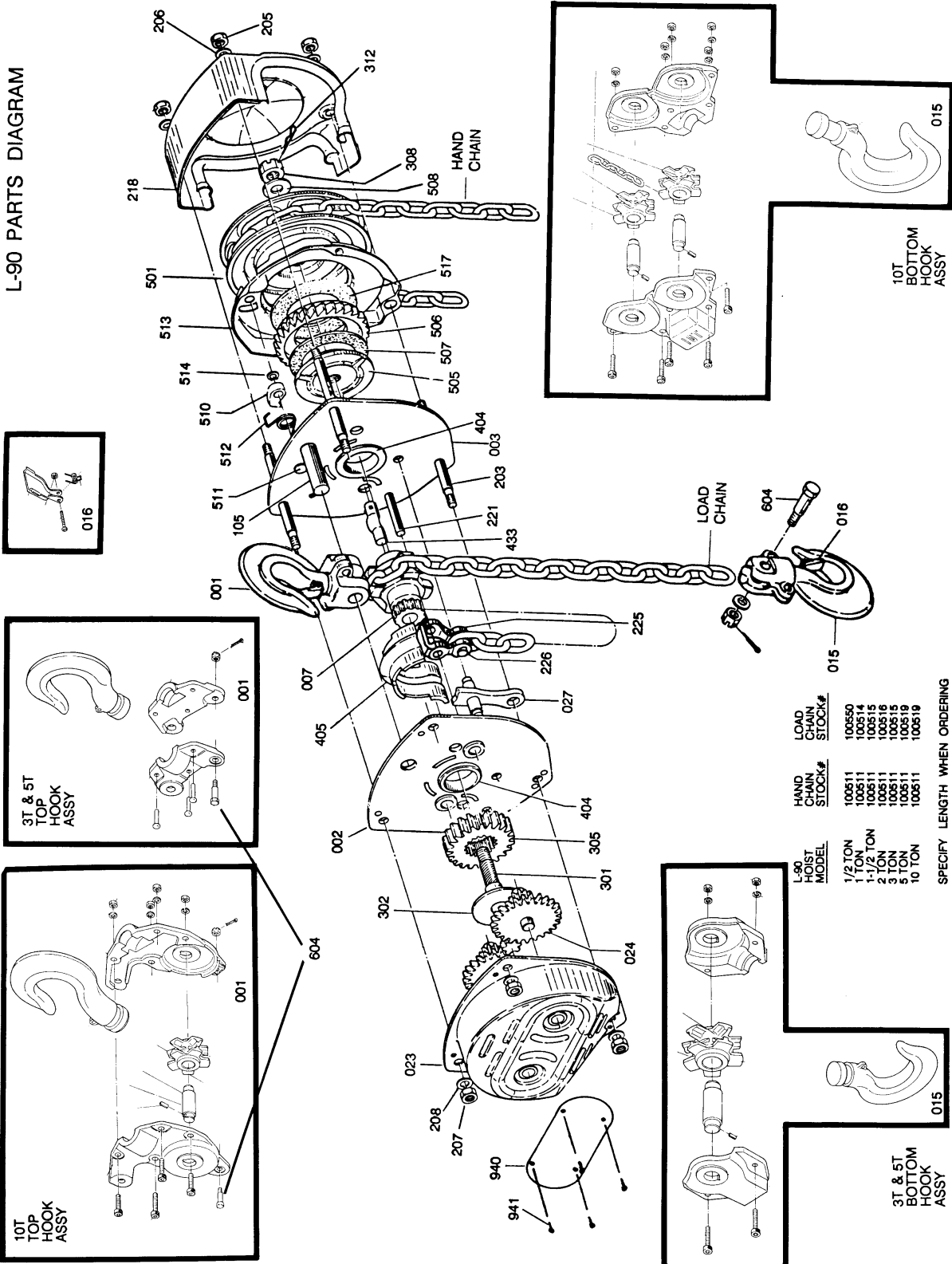


Parts Breakdown for L-90

L-90 PARTS DIAGRAM



L-90 HOIST MODEL	HAND CHAIN STOCK#	LOAD CHAIN STOCK#
1/2 TON	100511	100550
1 TON	100511	100514
1-1/2 TON	100511	100515
2 TON	100511	100516
3 TON	100511	100516
5 TON	100511	100516
10 TON	100511	100519

SPECIFY LENGTH WHEN ORDERING

1 Ton L-90 Chain Hoist

Index No.	Part No.	Description	Size
001	L90-001B	Top Hook Assembly	
002	L90-002B	Gear Side Plate Assembly	
003	L90-003B	Wheel Side Plate Assembly	
007	L90-007B	Load Sheave Assembly	
015	L90-015B	Bottom Hook Assembly	
016	L90-016B	Safety Latch Assembly (Old Style)	
	L90-016B-A	Safety Latch Assembly (New Style)	
023	L90-023B	Gear Case Assembly	
024	L90-024B	2 nd and 3 rd Gear Assembly	
027	L90-027B	Stripper Assembly	
105	L90-105AB	Top Hook Pin	
203	L90-203B	Stay Bolt	
205	L90-205ABCE	Cover Nut	
206	L90-206ABCE	Lock Washer	
207	L90-205ABCE	Cover Nut	
208	L90-206ABCE	Lock Washer	
218	L90-218B	Hand Wheel Cover	
221	L90-221B	Chain Stop Pin	
225	L90-225B	Anchor Plate	
226	L90-226B	Anchor Plate Pin	
301	L90-301B	Driving Shaft	
302	L90-302B	Driving Shaft Washer	
305	L90-305B	Load Gear	
308	L90-308	Castle Nut	
312	L90-312BCDEFG	Castle Nut Pin	
404	L90-404B	Load Metal	
405	L90-405B	Load Sheave Cover	
433	L90-433B	Load Sheave Cover Pin	
501	L90-501B	Hand Chain Wheel	
505	L90-505B	Disc Hub	
506	L90-506B	Ratchet Gear	
507	L90-507B	Friction Disc	
508	L90-508	Check Washer	
510	L90-510ABCE	Pawl	
511	L90-511AB	Pawl Pin	
512	L90-512ABCE	Pawl Spring	
513	L90-513B	Brake Cover	
517	L90-517B	Friction Disc	
604	L90-604B	Chain Stop Bolt Assembly	
940	L90-940B	Name Plate	
941	L90-941	Rivet	
	100511	Hand Chain*	5mm
	100514	Load Chain*	6.3mm

* Specify required length when ordering.