



SERVICE PARTS LIST

BULLETIN NO.
54-08-1150

SPECIFY CATALOG NO. AND SERIAL NO. WHEN ORDERING PARTS		REVISED BULLETIN	DATE
1/2" REVERSING DRILL		54-08-1149	Apr.'93
CATALOG NO.	1001-1	STARTING SERIAL NO.	491-264275
		WIRING INSTRUCTION 58-01-0771	

EXAMPLE:
Component Parts (Small #)
Are Included When Ordering
The Assembly (Large #).

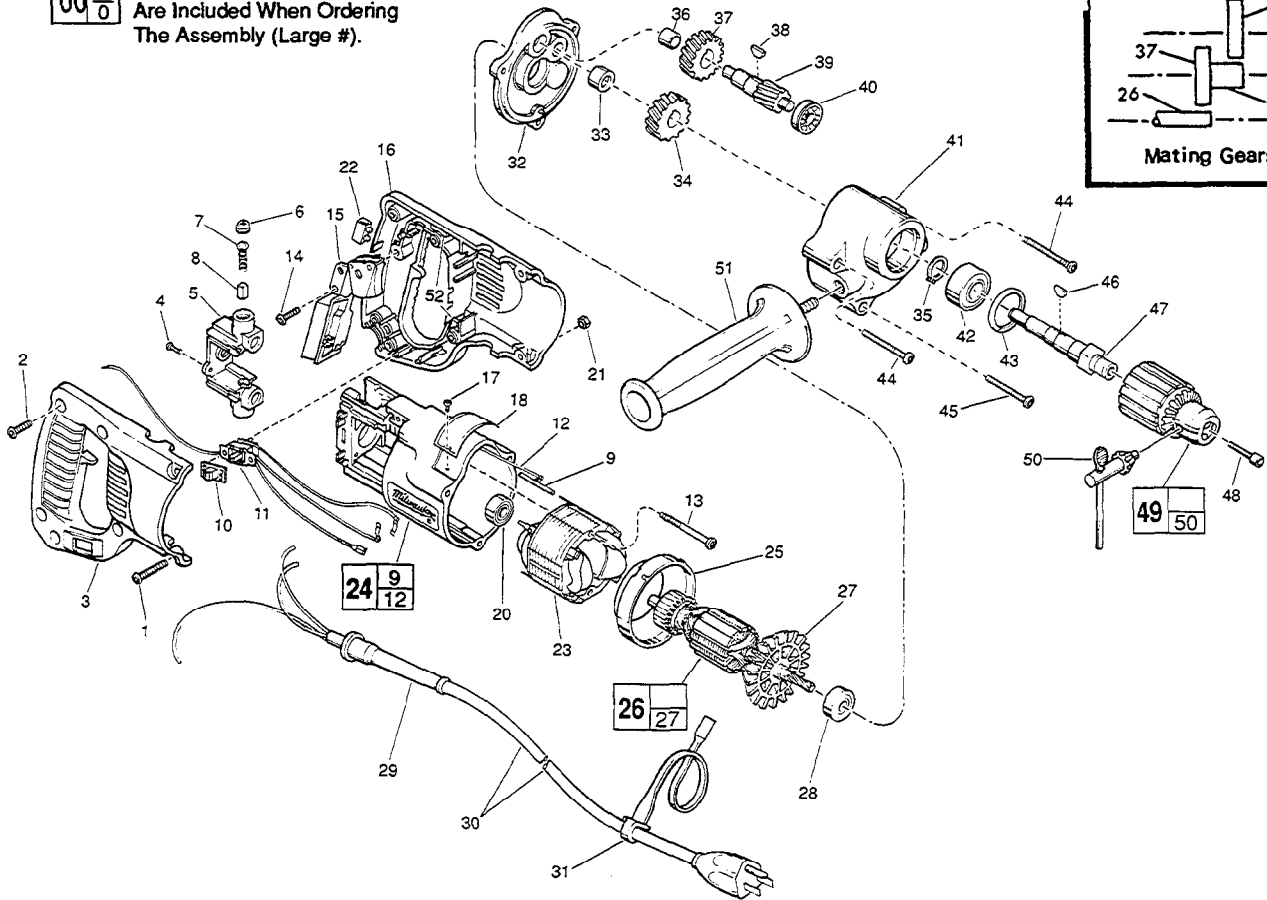
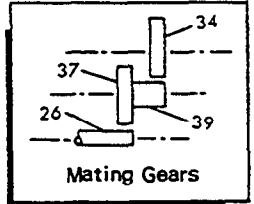


FIG.	PART NO.	DESCRIPTION OF PART	NO. REQ.	FIG.	PART NO.	DESCRIPTION OF PART	NO. REQ.	
	1	06-82-5390	8-32x1-1/4" Slit. Pan Hd. Tapite T-20	(2)	30	22-64-3190	Cord Set	(1)
	2	06-82-7270	8-16 x 5/8" Slit. Pan Hd. Plastite T-20	(5)	31	48-66-4040	Key Holder	(1)
★	3	31-44-1651	Right Handle Half	(1)	32	28-28-0601	Diaphragm	(1)
	4	06-82-7240	6-19 x 1/2" Slit. Pan Hd. Plast. T-15	(2)	33	02-50-2440	Needle Bearing	(1)
	5	22-22-1380	Brush Holder Assembly	(1)	34	32-75-1601	Spindle Gear	(1)
	6	23-44-0190	Brush Retaining Cap	(2)	35	34-60-1200	Retaining Ring	(1)
	7	23-52-0160	Brush Spring	(2)	36	02-50-1640	Needle Bearing	(1)
	8	22-16-0275	Carbon Brush	(2)	37	32-40-1241	Intermediate Gear	(1)
	9	44-60-0530	Ground Pin	(1)	38	06-42-0800	Woodruff Key	(1)
	10	31-12-0196	Switch Cap	(1)	39	36-66-2002	Intermediate Shaft	(1)
	11	23-66-1868	Reversing Switch Assembly	(1)	40	02-04-0640	Ball Bearing	(1)
	12	23-94-6100	Ground Wire Assembly	(1)	41	28-14-1910	Gear Case	(1)
	13	06-82-7410	8-16 x 1-7/8" Slit. Pan Hd. Plast. T-20	(2)	42	02-04-1536	Ball Bearing	(1)
	14	06-82-7270	8-16 x 5/8" Slit. Pan Hd. Plastite T-20	(1)	43	06-75-2500	Retaining Ring	(1)
	15	23-66-0167	On-Off Switch	(1)	44	06-82-7453	8-16 x 2-1/4" Slit. Pan Hd. Plastite T-20	(2)
★	16	31-44-1656	Left Handle Half	(1)	45	06-82-7354	8-16 x 1-3/8" Slit. Pan Hd. Plastite T-20	(1)
	17	06-85-0200	Nameplate Screw	(2)	46	06-42-1600	Woodruff Key	(1)
	18	12-99-0515	Nameplate Blank	(1)	47	38-50-5470	Spindle	(1)
	20	02-04-0845	Ball Bearing	(1)	48	06-75-3150	1/4-20 x 1 L.H. Skt. Cap Screw	(1)
	21	06-55-0835	8-32 Hex Nut	(2)	49	48-66-1360	1/2" Chuck	(1)
	22	22-56-0456	Terminal Block	(1)	50	48-66-3280	Chuck Key	(1)
	23	18-31-0200	120 Volt Field - Auto Assembly	(1)	51	43-62-0875	Side Handle	(1)
	24	31-50-0846	Motor Housing Assembly	(1)	52	14-46-1001	Foam Slug Kit-(10 Slugs)	(2)
	25	31-05-0050	Baffle	(1)				
	26	16-30-0325	120 Volt Armature	(1)				
	27	22-84-0531	Fan Assembly	(1)				
	28	02-04-0911	Ball Bearing	(1)				
	29	44-76-0210	Cord Protector	(1)				

FIG. LUBRICATION
41 3-1/4 Oz. Type "A" Grease, 49-08-0800.

MILWAUKEE ELECTRIC TOOL CORPORATION
13135 W. LISBON RD., BROOKFIELD, WI 53005