



SERVICE PARTS LIST

BUL.54-08-1052

1/2" ELECTRIC DRILL

REVISED BUL 54-08-1052 DATE Feb.'70

Catalog No. 1000

Starting Serial No. 17-85272

WIRING INSTR. 58-01-0170

Both Model and Serial No. must be furnished to obtain correct parts.

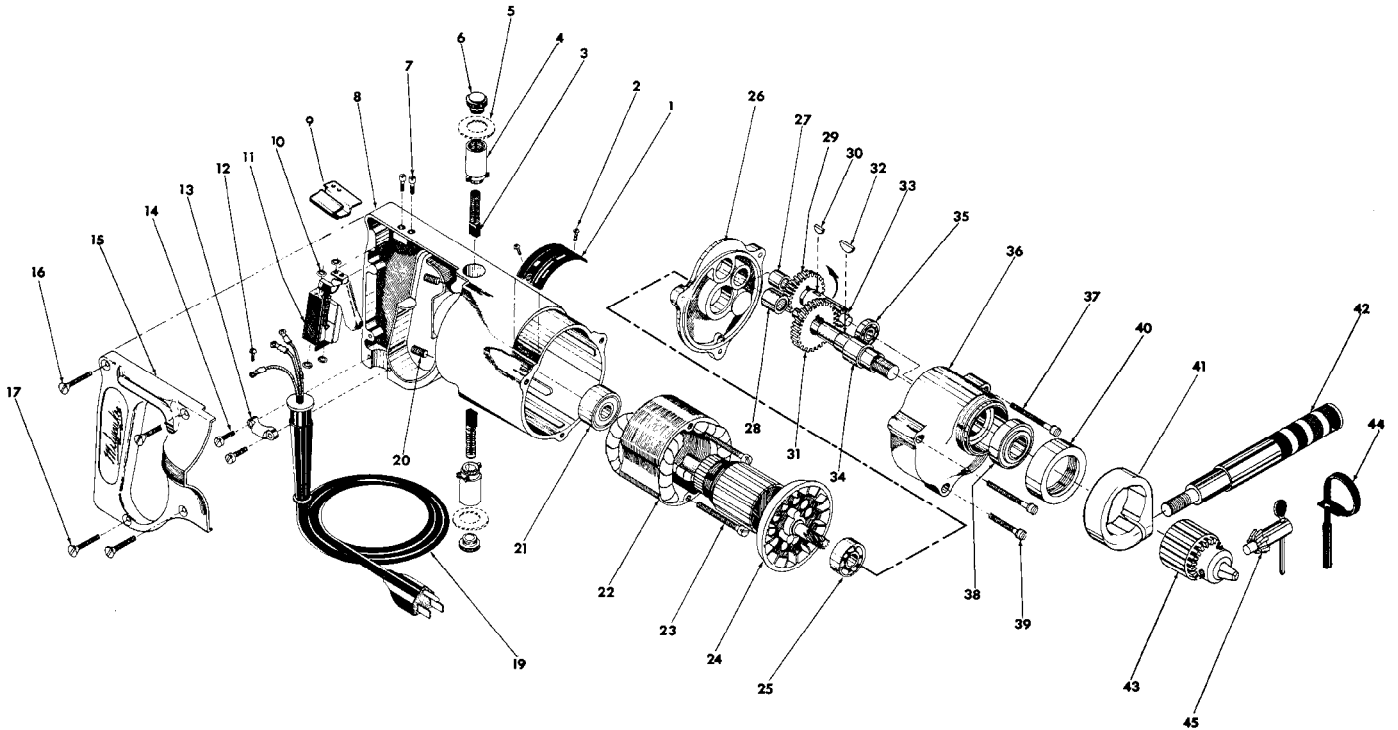


FIG.	PART NO.	DESCRIPTION OF PART	NO.REQ.	FIG.	PART NO.	DESCRIPTION OF PART	NO.REQ.
	1	12-98-0800			24	16-42-1040	Armature Assy.
★	2	06-77-0625	(2)	25	02-04-0940	Ball Bearing (Pinion End)	
	3	22-18-0100	(2)	26	28-28-0581	Diaphragm	
	4	22-22-0080	(2)	27	02-50-1640	Needle Bearing	
	5	23-86-0110	(2)	28	02-50-2110	Needle Bearing	
	6	23-44-0060	(2)	29	32-40-1241	Intermediate Gear	
	7	06-81-5800	(2)	30	06-42-0800	Woodruff Key	
	8	28-50-4481		31	32-75-1601	Spindle Gear	
★	9	42-68-0225		32	06-42-1200	Woodruff Key	
	10	06-97-1800	(4)	33	36-66-2001	Intermediate Pinion Shaft	
	11	23-66-0230		34	38-50-2551	Spindle	
	12	06-81-8625		35	02-04-0640	Ball Bearing	
	13	28-17-0400		36	28-14-0681	Gear Case	
	14	06-81-6150	(2)	37	06-81-6650	8-32x1-3/4 Fil.Hd.Sem Gear Case Scrs.	(2)
★	15	28-20-3601		38	02-04-1560	Ball Bearing	
	16	06-81-3750	(2)	39	06-81-6350	8-32x1 Fil.Hd.Sem Gear Case Scr.	
	17	06-81-3700	(2)	40	42-52-0071	Bearing Cap	
	19	22-64-0170		★41	28-82-0130	Handle Ring	
	20	06-83-2650	(2)	42	43-62-0160	Handle	
	21	02-04-0970		43	48-66-1280	Chuck	
★	22	18-42-1040		44	48-66-4040	Key Holder	
	23	06-81-6600	(2)	45	48-66-3280	Chuck Key	

NOTE

To Order Replacement Jaw and Nut Unit For Chuck, Order Part No. 43-90-0160

MILWAUKEE ELECTRIC TOOL CORP.

13135 West Lisbon Road • Brookfield, Wisconsin 53005