



SERVICE PARTS LIST

BUL. 54-08-2301

650 R.P.M. 1/2" DRILL

REVISED BUL
54-08-2300

DATE
Feb. '69

Catalog No. 0950-1

Starting
Serial No. 419-4850

WIRING INSTR.
58-01-0630

Both Model and Serial No. must be furnished to obtain correct parts.

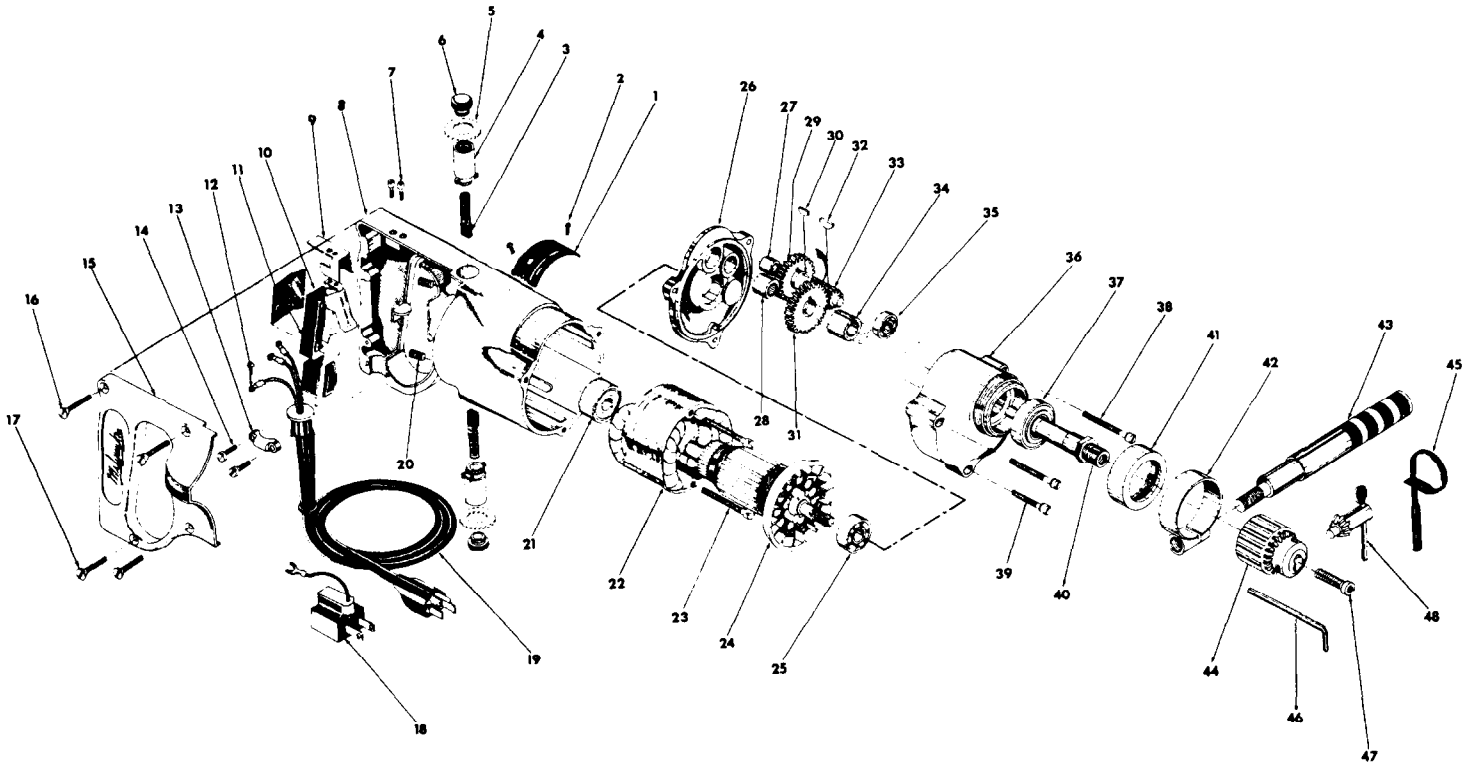


FIG.	PART NO.	DESCRIPTION OF PART
1	12-98-0800	Name Plate
2	06-81-8400	4-40x1/4 Rd.Hd, Sem Name Plate Scr. (2)
★3	22-18-0100	Carbon Brush Assy. (2)
4	22-22-0080	Brush Holder Assy. (2)
5	23-86-0110	Brush Holder Insul. Washer (2)
6	23-44-0060	Brush Retaining Screw (2)
7	06-81-5800	6-32x5/16 Fil.Hd, Sem Sw.Mtg. Scr. (2)
★8	28-50-4488	Motor Housing Assy. (Incl. Item 15 & Scr.)
9	42-14-0090	Wire Baffle
10	23-66-0486	Switch
11	23-16-0340	Switch Insulator
12	06-81-8625	6-32x1/4 Rd.Hd, Sem (Brass) Ground Scr.
13	28-17-0400	Cord Clamp
14	06-81-6150	8-32x1/2 Fil.Hd, Sem Cord Clamp Scr. (2)
15	28-20-3601	Handle Cover
16	06-81-3750	8-32x1 Oval Hd, Handle Cover Scr. (2)
17	06-81-3700	8-32x7/8 Oval Hd, Handle Cover Scr. (2)
18	48-03-0010	Attachment Plug Adaptor
19	22-64-0380	Cord Set
20	06-83-2650	1/4-20x3/8 Hd'less Brush Holder Set Scr.(2)
21	02-04-0970	Ball Bearing (Comm. End)
★22	18-42-1200	Field Assy.
★23	06-81-6700	8-32x1-7/8 Fil.Hd, Sem Field Scr. (2)
24	16-42-1215	Armature Assy.

FIG.	PART NO.	DESCRIPTION OF PART
25	02-04-0940	Ball Bearing (Pinion End)
26	28-28-0581	Diaphragm
27	02-50-1640	Needle Bearing
28	02-50-2110	Needle Bearing
29	32-40-1241	Intermediate Gear
30	06-42-0800	Woodruff Key
31	32-75-1611	Spindle Gear
32	06-42-1600	Woodruff Key
33	36-66-2011	Intermediate Pinion
34	45-36-0210	Spindle Gear Spacer
35	02-04-0700	Ball Bearing
36	28-14-0682	Gear Case
37	02-04-1560	Ball Bearing
38	06-81-6650	8-32x1-3/4 Fil.Hd, Sem Gear Case Scr. (2)
39	06-81-6350	8-32x1 Fil.Hd, Sem Gear Case Scr.
40	38-50-3651	Spindle
41	42-52-0071	Bearing Cap
42	44-90-0130	Handle Ring
43	43-62-0160	Handle
44	48-66-1360	Chuck
45	48-66-4040	Key Holder
46	49-96-0080	Socket Wrench
47	06-75-3150	1/4-20x1 L.H, Allen Hd, Chuck Scr.
48	48-66-3280	Chuck Key

NOTE

To Order Replacement Jaw and Nut Unit For Chuck, Order Part No. 43-90-0160