



SERVICE PARTS LIST

BUL. 54-08-230C

PERMANENT MAGNET DRILL

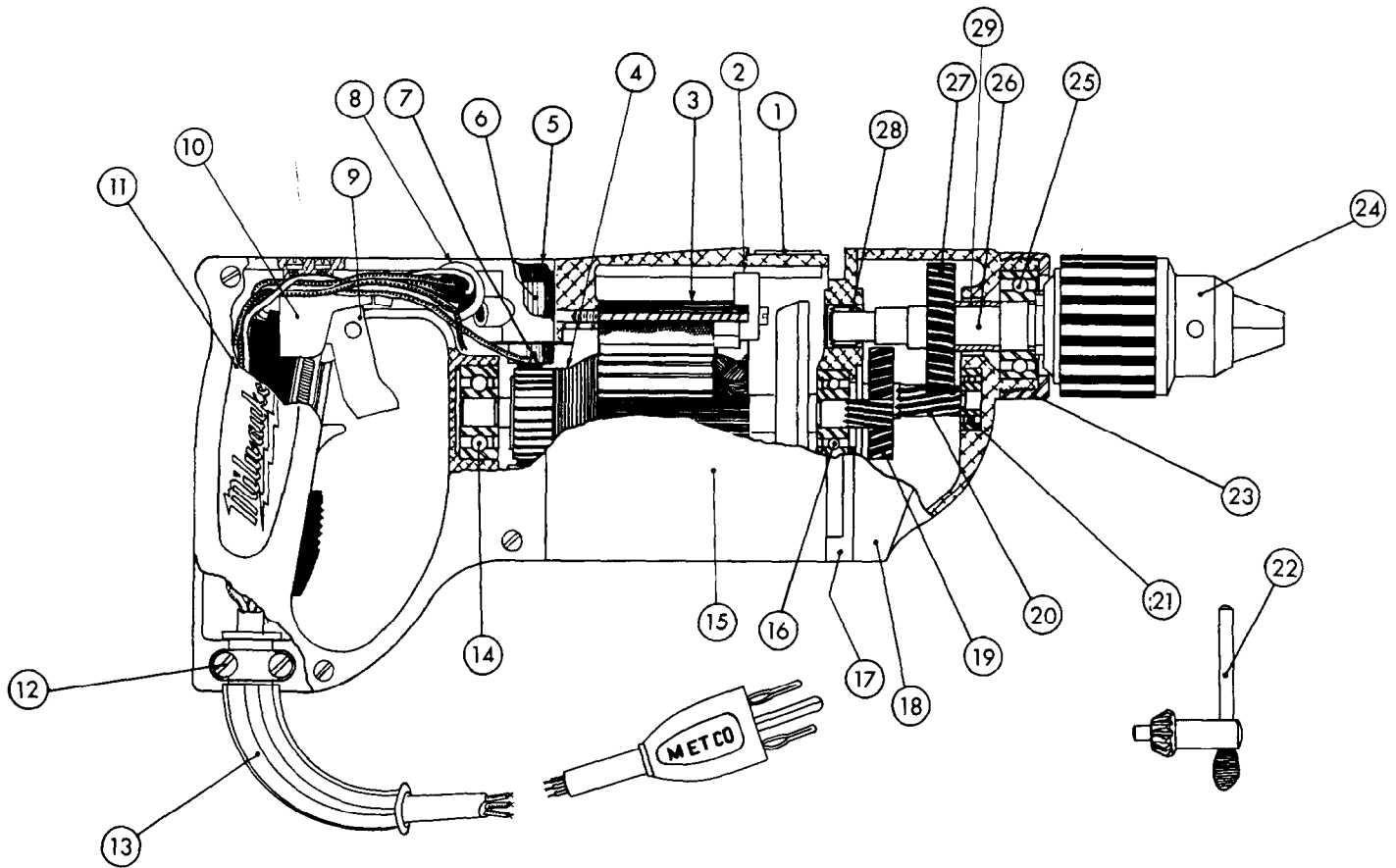
REVISED BUL. 6419-1 DATE May '68

Catalog No. 0950-1

Starting Serial No. 419-1001

WIRING INSTR. 58-01-0590

Both Model and Serial No. must be furnished to obtain correct parts.



ILLUSTRATED PARTS

FIG.	PART NO.	DESCRIPTION OF PART
	1	12-98-0800 Name Plate
	2	31-10-0060 Field Clamps
	3	18-42-1210 Field Assembly
	4	16-42-1215 Armature Assembly
	5	23-44-0060 Brush Retaining Screw
	6	22-22-0080 Brush Holder Assembly
★	7	22-18-0420 Carbon Brush Assembly
	8	23-38-2626 Rectifier Assembly
★	9	23-66-0486 Switch
	10	42-14-0090 Wire Baffle
	11	28-20-3601 Handle Cover
	12	28-17-0400 Cord Clamp Strap
	13	22-64-0380 Cord Set
	14	02-04-0970 Ball Bearing (Comm. End)
	15	28-50-4494 Motor Housing

FIG.	PART NO.	DESCRIPTION OF PART
	16	02-04-0940 Ball Bearing (Pinion End)
(2)	17	28-28-0581 Diaphragm Assy.
	18	28-14-0682 Gear Case
	19	32-40-1241 Intermediate Gear
(2)	20	36-66-2011 Intermediate Pinion
(2)	21	02-04-0700 Inter. Shaft Ball Bearing
(2)	22	48-66-3280 Chuck Key
	23	42-52-0071 Bearing Cap
	24	48-66-1360 1/2" Chuck
	25	02-04-1560 Ball Bearing
	26	38-50-3651 Spindle
	27	32-75-1611 Spindle Gear
	28	02-50-2110 Needle Bearing
	29	45-36-0210 Spindle Gear Spacer

MISCELLANEOUS PARTS NOT SHOWN

PART NO.	DESCRIPTION OF PART
02-50-1640	Needle Bearing
43-62-0160	Handle
44-90-0130	Handle Ring
06-81-8400	4-40x1/4 Rd. Hd. Name Pl. Scrs. Sems (2)
23-86-0110	Brush Holder Insul. Washer (2)
48-03-0010	Attach. Plug Adaptor
06-81-5800	6-32x5/16 Fil. Hd. Sw. Mtg. Sems (2)
49-96-0080	Socket Wrench
23-48-7326	Sleeving
★23-16-0500	Insulator

PART NO.	DESCRIPTION OF PART
06-81-6150	8-32x1/2 Fil. Hd. Sems Cord Clamp Strap Scrs. (2)
06-81-8625	6-32x1/4 Rd. Hd. Sems Ground Screw (Brass)
06-81-6350	8-32x1 Fil. Hd. Sems Gear Case Screws
06-81-6650	8-32x1-3/4 Fil. Hd. Sems Gear Case Screws (2)
06-83-2650	1/4-20x3/8 Hd. less Brush Holder Set Screws
06-81-3700	8-32x7/8 Oval Hd. Handle Cover Screws (2)
06-75-3150	1/4-20x1 Left Hd. Allen Hd. Cap Sc. (Chuck Ret. Sc.)
06-42-0800	Woodruff Key (2)
23-16-0340	Switch Insulator
06-81-3750	8-32x1 Oval Hd. Handle Cover Scrs. (2)
06-81-6750	8-32x2-1/2 Fil. Hd. Sems Field Scrs. (2)
06-83-2680	1/4-20x3/4 Brush Holder Set Screw
★48-66-4040	Key Holder