



SERVICE PARTS LIST

BUL.54-08-0603

3/8" ELECTRIC DRILL

REVISED BUL 54-08-0603 DATE Feb.'70

Catalog No. 0870

Starting Serial No. 13-8903

WIRING INSTR. 58-01-0170

Both Model and Serial No. must be furnished to obtain correct parts.

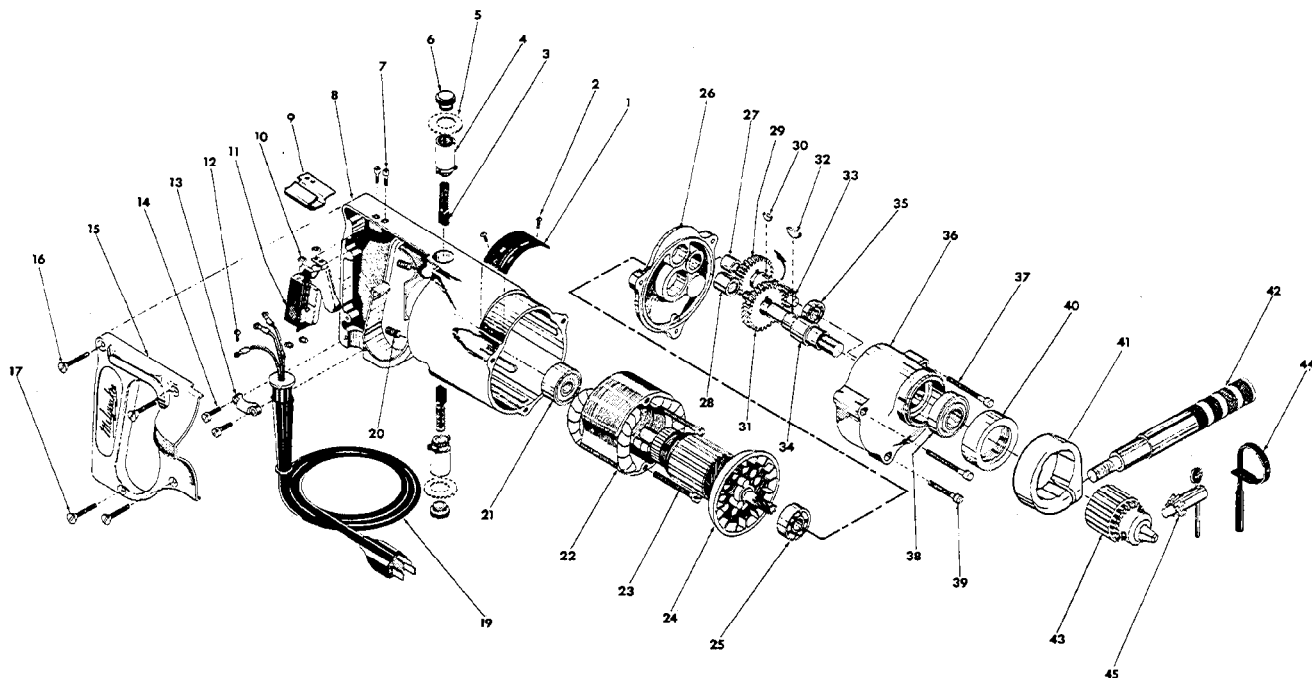


FIG.	PART NO.	DESCRIPTION OF PART	NO.REQ.	FIG.	PART NO.	DESCRIPTION OF PART	NO.REQ.
	1	12-98-0800 Name Plate			24	16-42-1040 Armature Assy.	
★	2	06-77-0625 6x1/4 Rd.Driv-In Screw	(2)		25	02-04-0940 Ball Bearing (Pinion End)	
	3	22-18-0100 Carbon Brush Assy.	(2)		26	28-28-0581 Diaphragm	
	4	22-22-0080 Brush Holder Assy.	(2)		27	02-50-1640 Needle Bearing	
	5	23-86-0110 Brush Holder Insul. Washer	(2)		28	02-50-2110 Needle Bearing	
	6	23-44-0060 Brush Retaining Screw	(2)		29	32-40-1241 Intermediate Gear	
	7	06-81-5800 6-32x5/16 Fil.Hd.Sem Sw.Mtg.Scr.	(2)		30	06-42-0800 Woodruff Key	
	8	28-50-4481 Motor Housing Assy.(Incl.Items 15,16&17)			31	32-75-1941 Spindle Gear	
★	9	42-68-0225 Wire Clamp			32	06-42-1200 Woodruff Key	
	10	06-97-1800 Lock Washers	(4)		33	36-66-2551 Intermediate Pinion Shaft	
	11	23-66-0230 Switch			34	38-50-2551 Spindle	
	12	06-81-8625 6-32x1/4 Rd.Hd.Sem(Bronze) Ground Scr.			35	02-04-0640 Ball Bearing	
	13	28-17-0400 Cord Clamp			36	28-14-0681 Gear Case	
	14	06-81-6150 8-32x1/2 Fil.Hd.Sem Cord Clamp Scrs.	(2)		37	06-81-6650 8-32x1-3/4 Fil.Hd.Sem Gear Case Scrs.	(2)
★	15	28-20-3601 Handle Cover			38	02-04-1560 Ball Bearing	
	16	06-81-3750 8-32x1 Oval Hd. Handle Cover Scrs.	(2)		39	06-81-6350 8-32x1 Fil. Hd. Sem Gear Case Scr.	
	17	06-81-3700 8-32x7/8 Oval Hd. Handle Cover Scrs.	(2)		40	42-52-0071 Bearing Cap	
	19	22-64-0170 Cord Set		★	41	28-82-0130 Handle Ring	
	20	06-83-2650 1/4-20x3/8 Hd'less Brush Holder Set Scrs(2)			42	43-62-0160 Handle	
	21	02-04-0970 Ball Bearing (Comm. End)			43	48-66-0840 Chuck	
★	22	18-42-1040 Field Assy.			44	48-66-4040 Key Holder	
	23	06-81-6600 8-32x1-3/4 Fil.Hd.Sem Field Scrs.	(2)		45	48-66-3280 Chuck Key	