



SERVICE PARTS LIST

BULLETIN NO.
54-49-0980

SPECIFY CATALOG NO. AND SERIAL NO. WHEN ORDERING PARTS		REVISED BULLETIN	DATE
M18™ Brushless PACKOUT™ Fan			Feb. 2024
CATALOG NO. 0818-20	SERIAL NO. P69A	WIRING INSTRUCTION	

EXAMPLE:
Component Parts (Small #) Are Included
When Ordering The Assembly (Large #).

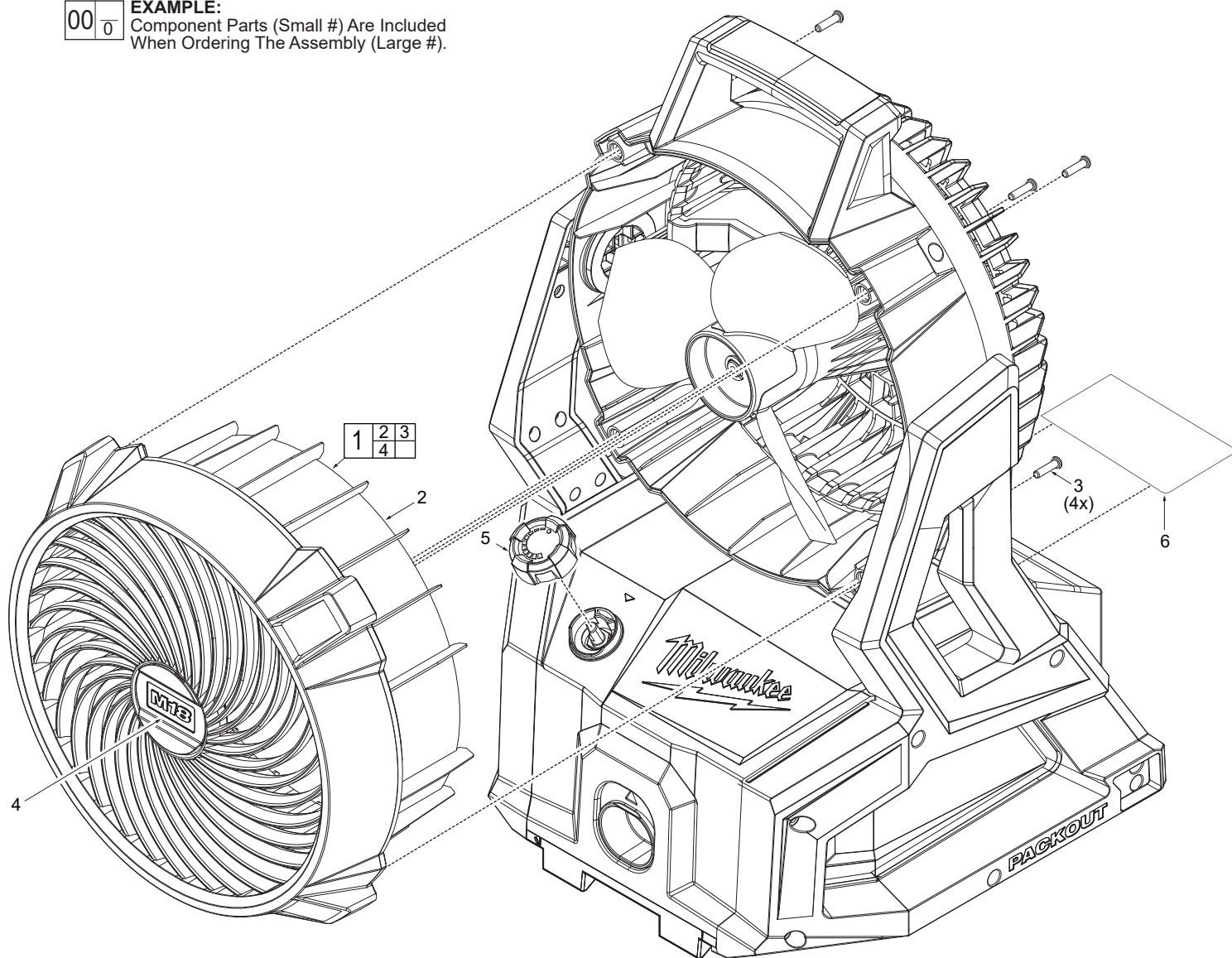


FIG.	PART NO.	DESCRIPTION OF PART
1	43-52-0020	Front Grill and 4 Screws Service Kit
2	-----	Front Grill
3	-----	M3.5 x 15mm T-15 Screw
4	-----	Front Logo Cap
5	23-18-0055	Control Knob
6	12-20-0901	Service Nameplate

NO. REQ.
(1)
(1)
(4)
(1)
(1)
(1)

FIG.	NOTES
6	A clean, dry surface is essential for proper performance for any adhesive system. The area intended for application of any adhesive label or nameplate must be prepared by cleaning with isopropyl alcohol. The solvent is to be applied with a clean, lint free applicator and the surface allowed to dry before applying the label or nameplate.

SCREW TORQUE SPECIFICATIONS			
FIG.	PART NO.	WHERE USED	SEAT TORQUE
			(kgf-cm) (lb-in)
3	-----	Front Grill to Body Housing	7.5-9.5 6.5-8.2