



# SERVICE PARTS LIST

**BULLETIN NO.**  
54-05-0127

SPECIFY CATALOG NO. AND SERIAL NO. WHEN ORDERING PARTS		REVISED BULLETIN 54-05-0126	DATE Feb. '84
<b>REVERSABLE HEAVY-DUTY DRAIN CLEANER</b>			
<b>CATALOG NO. 0566-1</b>		<b>STARTING SERIAL NO. 496-41000</b>	
<b>WIRING INSTRUCTION 58-01-0015</b>			
CAT. NO.	START SER. NO.	BILINGUAL LABEL	

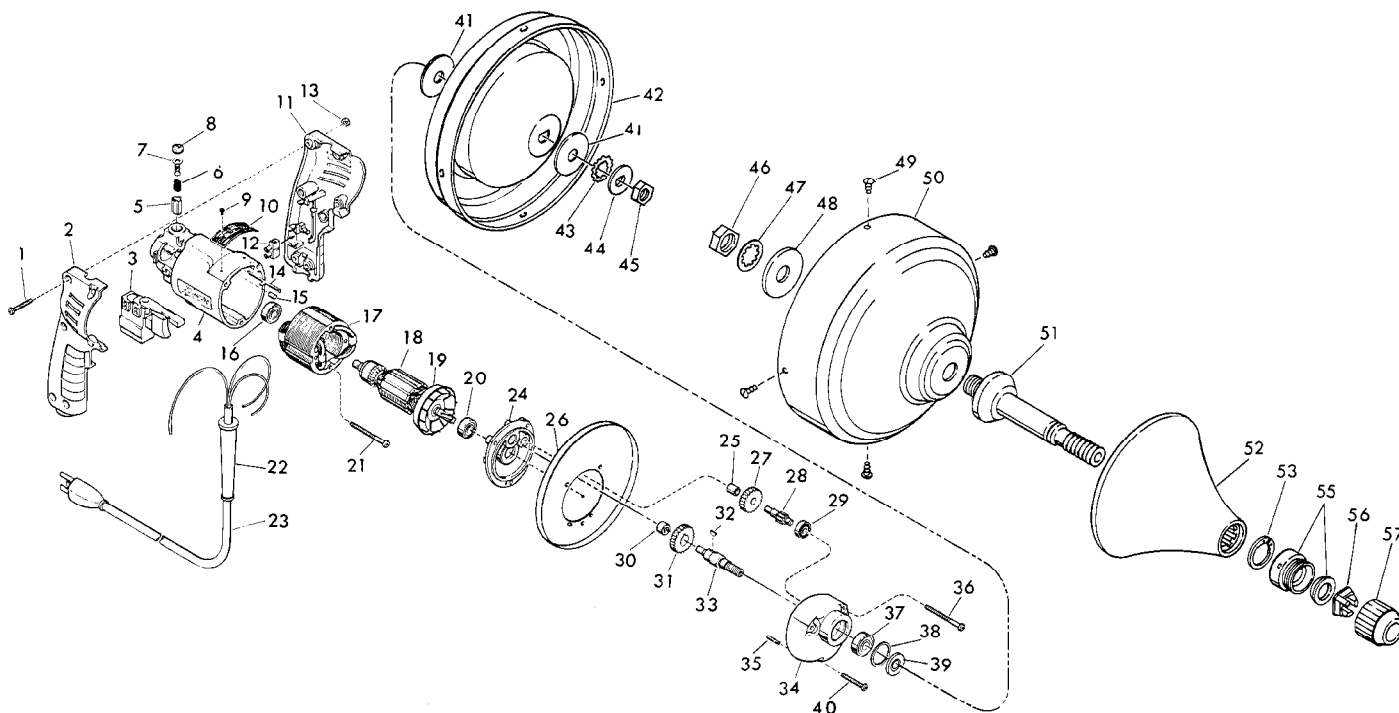


FIG.	PART NO.	DESCRIPTION OF PART	NO. REQ.	FIG.	PART NO.	DESCRIPTION OF PART	NO. REQ.
★	1	06-81-0473 8-32 x 1" Pan Hd. Pozidriv Screw	(6)				
★	2	31-44-1130 Right Handle Half	(1)				
★	3	23-66-1255 Speed Control Switch	(1)				
★	4	31-50-0340 Motor Housing	(1)				
★	5	22-20-0530 Brush Tube	(2)				
★	6	22-16-0270 Carbon Brush	(2)				
★	7	23-52-0210 Brush Spring Assembly	(2)				
★	8	23-44-1120 Brush Retaining Screw	(2)				
	9	06-85-0200 Nameplate Screw	(2)				
★	10	12-99-0312 Nameplate Blank	(1)				
★	11	31-44-1140 Left Handle Half	(1)				
★	12	22-56-0455 Terminal Block	(1)				
★	13	06-55-0835 8-32 Hex Nut	(6)				
★	14	44-60-0530 Ground Pin	(1)				
	15	45-30-0120 Ball Bearing Retaining Slug	(1)				
★	16	02-04-0710 Ball Bearing	(1)				
★	17	18-10-0070 120 V. Field	(1)				
★	18	16-10-0570 120 V. Armature (Includes Fig. 19)	(1)				
★	19	22-84-0760 Fan Assembly	(1)				
★	20	02-04-0847 Ball Bearing	(1)				
★	21	06-95-0145 7 x 1-3/4" Pan Hd. Pozidriv Screw	(2)				
★	22	44-76-0130 Cord Protector	(1)				
★	23	22-64-1120 Cord Set	(1)				
★	24	28-28-1640 Diaphragm	(1)				
	25	02-50-1210 Needle Bearing	(1)				
★	26	45-12-0215 Shield	(1)				
★	27	32-40-1131 Intermediate Gear	(1)				
★	28	36-66-0861 Intermediate Shaft	(1)				
	29	02-04-0640 Ball Bearing	(1)				
★	30	02-50-1620 Needle Bearing	(1)				
	31	32-75-1101 Spindle Gear	(1)				
	32	06-42-0800 Woodruff Key	(1)				
	33	38-50-4001 Reversing Spindle	(1)				
★	34	28-14-1530 Gear Case	(1)				
★	35	06-65-0825 1/8 x 1/2" Groove Pin	(1)				
★	36	06-95-0145 7 x 1-3/4" Pan Hd. Pozidriv Screw	(2)				
	37	02-04-1020 Ball Bearing	(1)				
	38	34-80-1400 Retaining Ring	(1)				
	39	45-36-0621 Spacer	(1)				
★	40	06-95-0137 7 x 1-1/8" Pan Hd. Pozidriv Screw	(1)				
	41	45-88-7730 Washer	(2)				
	42	43-11-0021 Upper Drum Section	(1)				
	43	06-97-4130 Lock Washer	(1)				
	44	45-88-7235 "D" Hole Washer	(1)				
	45	06-55-2450 3/8 - 24 Hex Nut	(1)				
	46	06-55-3760 Special Hex Nut	(1)				
	47	06-97-3010 Internal Lock Washer	(1)				
	48	45-88-7175 Washer	(1)				
	49	06-85-0380 6-20 x 3/8" Phil. Pan Hd. Tek Screw	(4)				
	50	43-11-0031 Lower Drum Section	(1)				
	51	38-50-5055 Spindle Assembly	(1)				
	52	43-54-0320 Hand Guard Assembly	(1)				
	53	34-60-2310 Retaining Ring	(1)				
	54	48-66-0270 Chuck (Fig. Nos. 55 thru 57)	(1)				
	55	42-30-0270 Chuck Body and Thrust Plug	(1)				
	56	42-77-0010 Chuck Collet	(1)				
	57	45-22-0310 Chuck Sleeve	(1)				
★	58	10-98-5986 Warning Label (Not Shown)	(1)				