



SERVICE PARTS LIST

BULLETIN NO.
54-05-0133

SPECIFY CATALOG NO. AND SERIAL NO. WHEN ORDERING PARTS		REVISED BULLETIN	DATE
REVERSIBLE HEAVY-DUTY DRAIN CLEANER		54-05-0132	Nov. '94
CATALOG NO. 0566-1	STARTING SERIAL NO. 496B	WIRING INSTRUCTION 58-01-0031	

EXAMPLE:

Component Parts (Small #) Are Included When Ordering The Assembly (Large #).

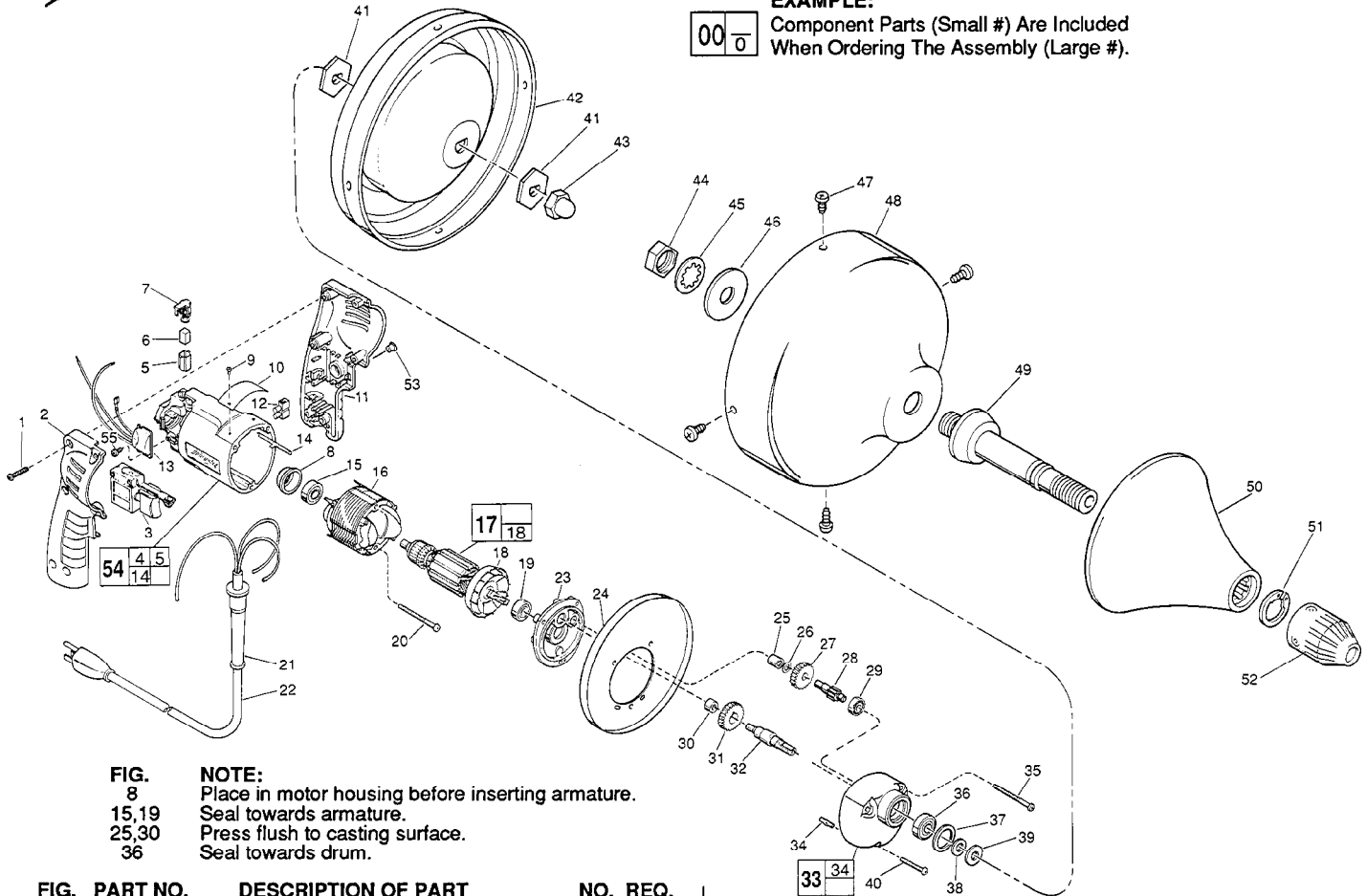


FIG. 8
15, 19
25, 30
36

NOTE:
Place in motor housing before inserting armature.
Seal towards armature.
Press flush to casting surface.
Seal towards drum.

FIG.	PART NO.	DESCRIPTION OF PART	NO.	REQ.
1	06-82-7284	8-16 x 3/4" Pan Hd. Slit. Plast. T-20	(6)	
2	31-44-1745	Right Handle Half	(1)	
3	23-66-2150	Speed Control Switch	(1)	
4	23-94-6225	Ground Wire Assembly (Not Shown)	(1)	
5	22-20-0830	Brush Tube	(2)	
6	22-16-0275	Carbon Brush	(2)	
7	23-52-1560	Brush Spring Assembly	(2)	
8	22-72-0100	Bearing Cup	(1)	
★ 9	06-72-1720	Nameplate Rivet	(2)	
10	12-99-0850	Service Nameplate	(1)	
11	31-44-1740	Left Handle Half	(1)	
12	22-56-0456	Terminal Block	(1)	
★ 13	14-20-0750	Remote Electronic Assembly	(1)	
14	44-60-0530	Ground Pin	(1)	
15	02-04-0645	Ball Bearing	(1)	
16	18-11-0070	120 Volt Field	(1)	
17	16-10-0571	120 Volt Armature	(1)	
18	22-84-0760	Fan Assembly	(1)	
19	02-04-0847	Ball Bearing	(1)	
20	06-82-7393	7-18 x 2" Pan Hd. Slit. Plast. T-20	(2)	
21	44-76-0210	Cord Protector	(1)	
22	22-64-1120	Cord Set	(1)	
23	28-28-1940	Diaphragm	(1)	
24	45-12-0216	Shield	(1)	
25	02-50-1210	Needle Bearing	(1)	
26	45-88-7301	Heat Treated Washer	(1)	
27	32-40-1950	Intermediate Gear	(1)	
28	36-66-4370	Intermediate Pinion Shaft	(1)	
29	02-04-0640	Ball Bearing	(1)	
30	02-50-1620	Needle Bearing	(1)	
31	32-75-3220	Spindle Gear	(1)	
32	38-50-5710	Reversing Spindle	(1)	
33	14-30-0620	Gear Case Assembly	(1)	

FIG.	PART NO.	DESCRIPTION OF PART	NO.	REQ.
34	06-65-0825	1/8 x 1/2" Groove Pin	(1)	
★ 35	06-82-7380	7-18 x 1-7/8" Pan Hd. Slit. Plast. T-20	(2)	
36	02-04-1020	Ball Bearing	(1)	
37	34-80-1400	Retaining Ring	(1)	
38	45-88-0080	Chuck Washer	(1)	
39	45-88-0605	Flat Washer	(1)	
★ 40	06-82-7320	7-18 x 1-1/4" Pan Hd. Slit. Plast. T-20	(1)	
41	45-88-8005	"D" Hole Hex Washer	(2)	
42	43-11-0070	Upper Drum Section	(1)	
43	44-40-0625	Low Crown Nut	(1)	
44	06-55-3760	Special Hex Nut	(1)	
45	06-97-3010	Internal Lock Washer	(1)	
46	45-88-7175	Washer	(1)	
★ 47	06-82-8845	8-32 x 3/8" Pan Hd. Sems T-20	(4)	
48	43-11-0060	Lower Drum Section	(1)	
49	38-50-5055	Spindle Assembly	(1)	
50	43-54-0320	Hand Guard Assembly	(1)	
51	34-60-1312	Retaining Ring	(1)	
52	48-66-0270	Chuck	(1)	
53	31-53-0110	Plug	(1)	
★ 54	14-38-0601	Motor Housing Assembly	(1)	
55	06-82-7212	4-20 x 1/4" Pan Hd. Plast. T-10	(1)	

FIG. LUBRICATION

33 1-1/4 Oz. Type "E" Grease, No. 49-08-4122. Place near Intermediate shaft ball bearing in gear case.

MILWAUKEE ELECTRIC TOOL CORPORATION
13135 W. LISBON RD., BROOKFIELD, WI 53005