

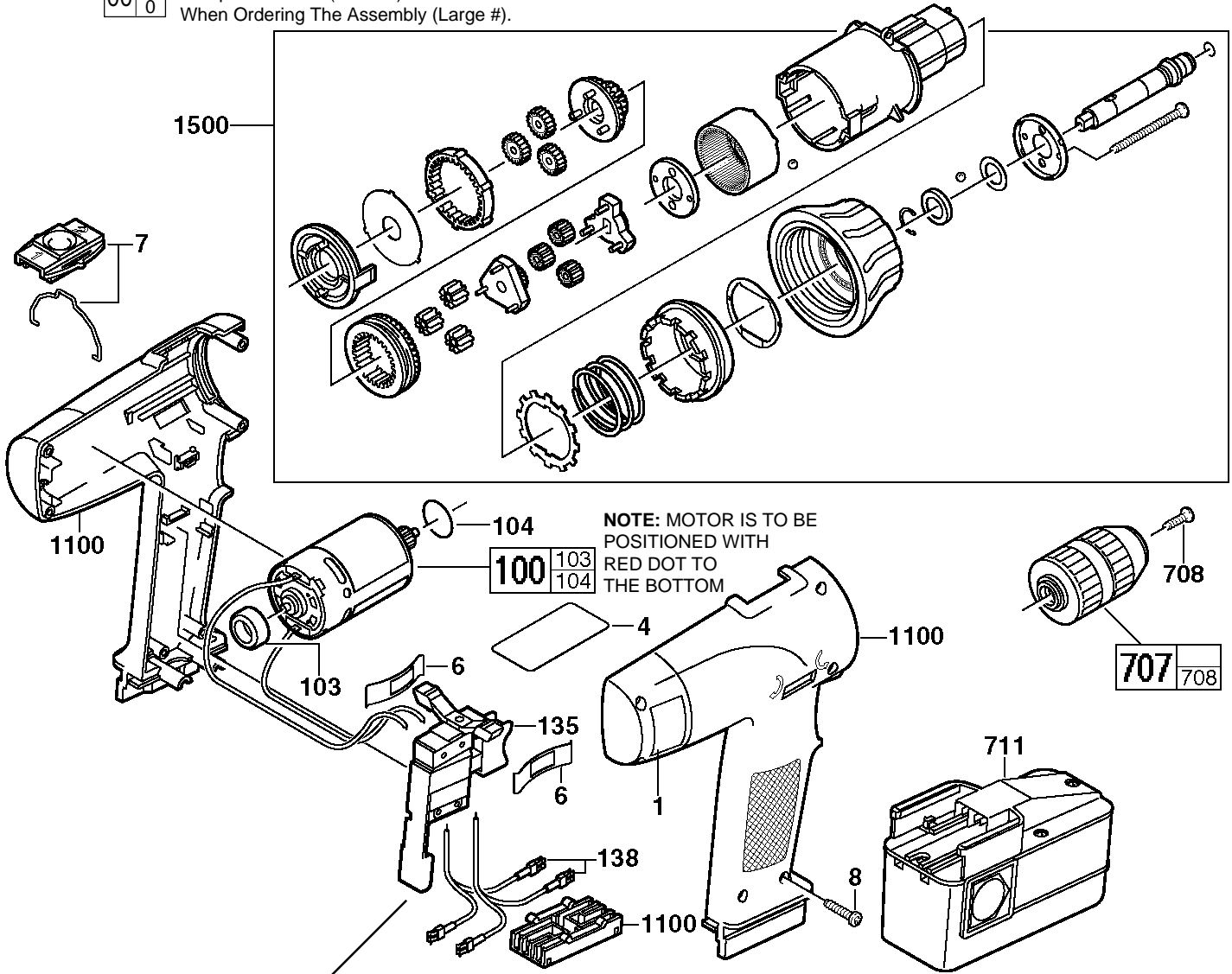
SERVICE PARTS LIST

BULLETIN NO.
54-06-1525

| | | | |
|--|--------------------|---|-----------|
| SPECIFY CATALOG NO. AND SERIAL NO. WHEN ORDERING PARTS | | REVISED BULLETIN | DATE |
| 12 VOLT 3/8" POWER PLUS DRIVER-DRILL | | | Oct. 2001 |
| CATALOG NO. 0502-02, 0502-20 | SERIAL NUMBER 901A | WIRING INSTRUCTION SEE REVERSE SIDE | |

00 0

EXAMPLE:
Component Parts (Small #) Are Included
When Ordering The Assembly (Large #).



NOTE: MOTOR IS TO BE
POSITIONED WITH
RED DOT TO
THE BOTTOM

⚠ WARNING
SWITCH POLARITY SENSITIVE
If wired incorrectly with housing
assembly, (fig. 1100), switch
will be damaged and destroyed!
*See reverse side of bulletin for
switch wiring detail.*

| FIG. | PART NO. | DESCRIPTION OF PART | NO. REQ. |
|------|------------|---------------------------|----------|
| 1 | 10-15-9440 | Warning Label | 1 |
| 4 | 12-20-0502 | Service Nameplate | 1 |
| 6 | 45-22-0145 | Dust Shield | 2 |
| 7 | 45-24-1195 | Slide High/Low | 1 |
| 8 | 06-82-7236 | Screw | 6 |
| 100 | 23-30-0115 | Motor | 1 |
| 103 | 45-22-0570 | Rubber Sleeve | 1 |
| 104 | 34-40-2005 | O-Ring | 1 |
| 135 | 23-66-1295 | Switch | 1 |
| 138 | 23-94-9010 | Lead Wire Assembly | 1 |
| 707 | 48-66-0360 | Chuck | 1 |
| 708 | 05-88-1425 | Chuck Screw - L.H. Thread | 1 |
| 711 | ----- | Battery Pack | 1 |
| 1100 | 31-50-0495 | Housing Assembly | 1 |
| 1500 | 14-29-0090 | Gear Box Assembly | 1 |

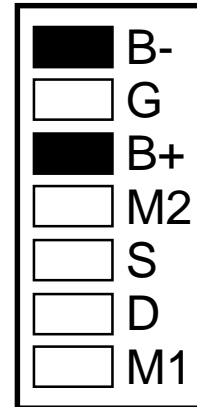
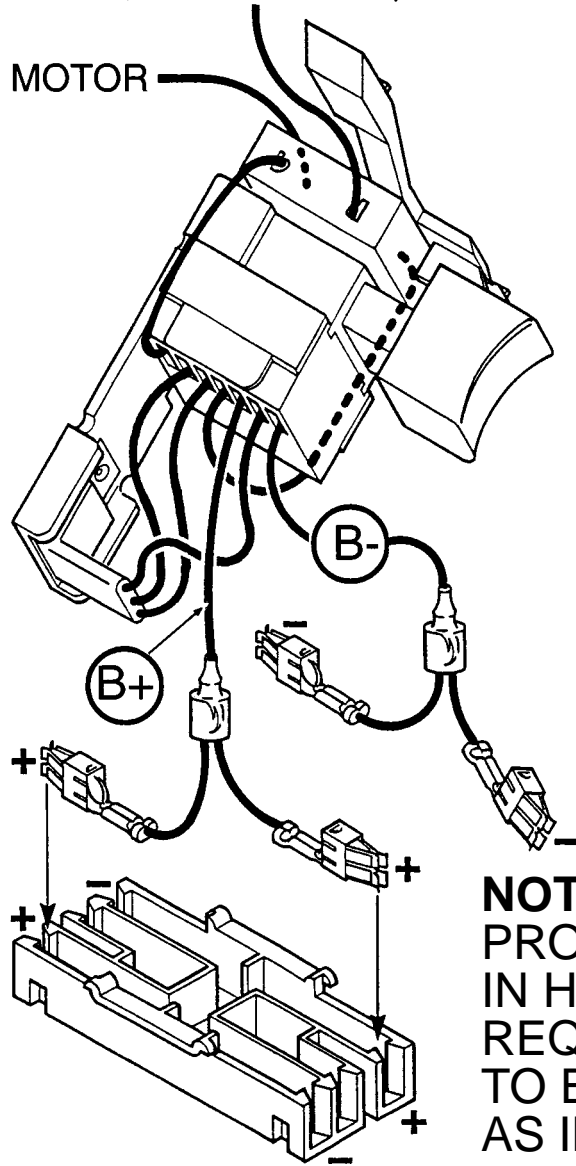
MILWAUKEE ELECTRIC TOOL CORPORATION
13135 W. LISBON RD., BROOKFIELD, WI 53005
Drwg. 6

WARNING


SWITCH POLARITY SENSITIVE
IF WIRED INCORRECTLY WITH
HOUSING ASSEMBLY, (FIG. 1100),
SWITCH **WILL BE** DAMAGED AND
DESTROYED.

TO BOTTOM OF MOTOR
(Tab with red dot)

TO TOP OF MOTOR



**BOTTOM VIEW
OF SWITCH**

NOTE:
PROPER POLARITY
IN HOUSING ASSEMBLY
REQUIRES LEADS
TO BE CROSSED
AS ILLUSTRATED .