



# SERVICE PARTS LIST

**BULLETIN NO.**  
**54-42-5700**

SPECIFY CATALOG NO. AND SERIAL NO. WHEN ORDERING PARTS		REVISED BULLETIN	DATE
<b>12 VOLT CORDLESS SCREWDRIVER</b>			Nov. '97
CATALOG NO. <b>0455-20</b>	STARTING SERIAL NO. <b>911A</b>	WIRING INSTRUCTION <b>58-01-1605</b>	

**EXAMPLE:**  
Component Parts (Small #)  
Are Included When Ordering  
The Assembly (Large #).

00  
0

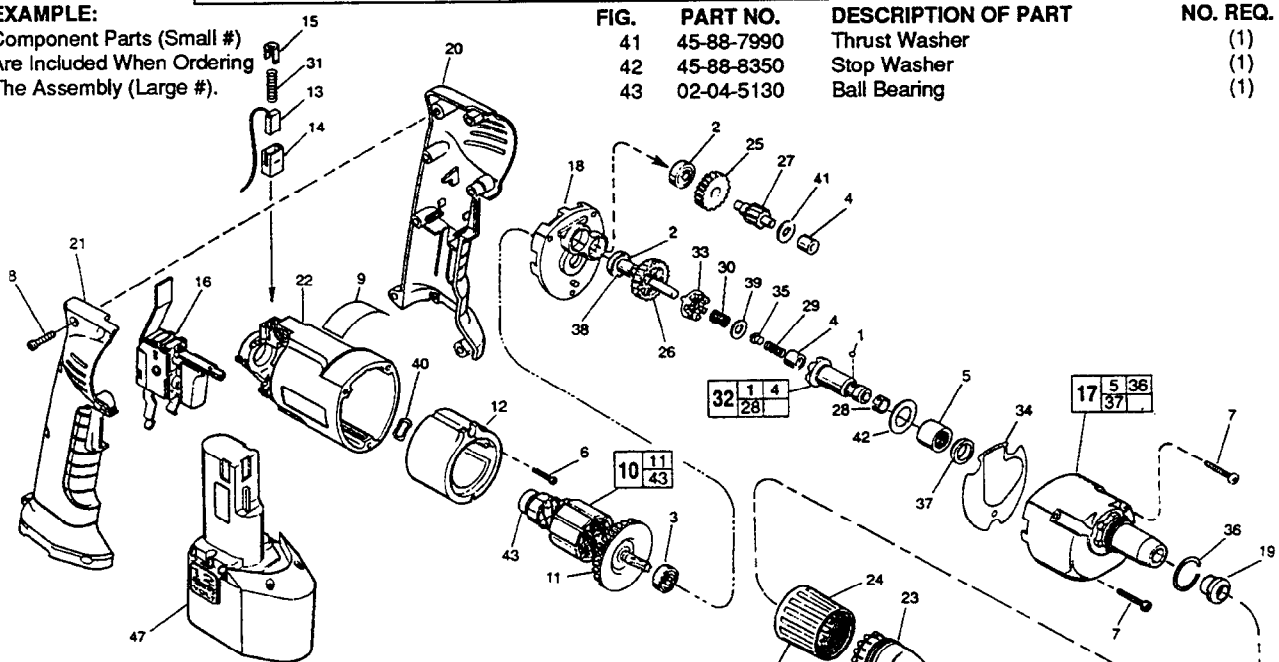


FIG.	PART NO.	DESCRIPTION OF PART	NO. REQ.
1	02-02-0130	Steel Ball	(1)
2	02-04-0645	Ball Bearing	(2)
3	02-04-0851	Ball Bearing	(1)
4	02-50-2400	Needle Bearing	(2)
5	02-50-4220	Needle Roller Bearing	(1)
6	06-82-7261	6-19 x 11/16" Pan Hd. Slit. Plast. T-20	(1)
7	06-82-7344	7-18 x 1-1/2" Pan Hd. Slit. Plast. T-20	(3)
8	06-82-9207	6-32 x 11/16" Pan Hd. Slit. Plast. T-20	(7)
9	12-20-0455	Service Nameplate Kit	(1)
10	16-01-0040	Armature	(1)
11	22-84-0830	Fan Assembly	(1)
12	18-01-0040	Field	(1)
13	22-18-0840	Brush Assembly - Top	(1)
13	22-18-0845	Brush Assembly - Bottom	(1)
14	22-20-0860	Brush Tube	(2)
15	22-32-0400	Brush Spring Clip	(2)
16	23-66-2300	Speed Control Switch	(1)
17	14-30-0745	Gear Case Assembly	(1)
18	28-28-2310	Diaphragm	(1)
19	30-37-0046	Nose Guide	(1)
20	31-44-1880	Left Handle Half	(1)
21	31-44-1885	Right Handle Half	(1)
22	31-50-1080	Motor Housing	(1)
23	31-51-0090	Locator	(1)
24	31-58-0510	Locator Sleeve	(1)
25	32-40-0455	Intermediate Gear	(1)
26	32-10-4060	Clutch Gear Assembly	(1)
27	36-66-9680	Intermediate Pinion Shaft	(1)
28	40-50-0510	Bit Retaining Spring	(1)
29	40-50-0095	Separator Spring	(1)
30	40-50-8515	Bias Spring	(1)
31	40-50-8775	Brush Spring	(2)
32	42-66-0710	Clutch Chuck Assembly	(1)
33	42-70-0310	Drive Clutch	(1)
34	43-44-4010	Gasket	(1)
35	44-60-0505	Thrust Pin	(1)
36	44-90-0401	Locator Ring	(1)
37	45-06-0570	Oil Seal	(1)
38	45-36-1280	Spacer	(1)
39	45-88-0555	Thrust Washer	(1)
40	45-88-5615	Wavy Spring Washer	(1)

FIG.	PART NO.	DESCRIPTION OF PART	NO. REQ.
41	45-88-7990	Thrust Washer	(1)
42	45-88-8350	Stop Washer	(1)
43	02-04-5130	Ball Bearing	(1)

FIG.	PART NO.	DESCRIPTION OF PART	NO. REQ.
44	49-26-1035	Drywall Locator Assembly	(1)
45	48-32-3065	Magnetic Bit Holder	(1)
46	48-32-1050	#2 Insert Bit	(1)
47	48-11-0250	12 Volt Battery	(1)
	10-15-0790	Warning Label	(1)
	10-20-0150	Logo Label	(2)

FIG.	LUBRICATION
10	1/64 Oz. On Each Side Of Armature Pinion At Clutch Gear.
17	7/8 Oz. In Pinion Pocket Of Gear Case, Near Intermediate Needle Bearing In Gear Case.
26	1/64 Oz. In The Clutch Pockets Of The Clutch Gear.
30	1/64 Oz. Type "E" Grease, No. 49-08-4122, On Bias Spring.

Apply A Light Film Of "E" Grease To Ball And Needle Bearing Pockets Of The Diaphragm And Gear Case Prior To Pressing Bearings. Apply A Light Film Of "E" Grease To The Lead Chamfer Of Clutch Chuck, Thrust Pin And Separator Spring Prior To Assembly.

FIG.	NOTES
2	Seal Away From Armature
4,5	Press only on end with manufacturer ID.
4,5	Press flush to casting surface in gearcase and clutch chuck.
6	Torque to 20 In./Lbs.
7	Torque to 15-20 In./Lbs.
8	Torque to 16 In./Lbs.
12	Press chamfer end first.
13,14,22	Slot on brush tube must be assembled on the same side as slot on motor housing. Brush assemblies must be inserted with the wire laying inside of brush tube slot. Brush must slide freely inside brush tube.
14,15	Brush spring clip must snap into detent of brush tube. Spring side towards rear of gear case.
37	

**MILWAUKEE ELECTRIC TOOL CORPORATION**  
13135 W. LISBON RD., BROOKFIELD, WI 53005  
Drwg. 3