



# SERVICE PARTS LIST

**BULLETIN NO.**  
**55-06-1026**

SPECIFY CATALOG NO. AND SERIAL NO. WHEN ORDERING PARTS		REVISED BULLETIN	DATE
12 VOLT 1/2" CORDLESS DRILL		55-06-1025	May '96
CATALOG NO. 0431-4	STARTING SERIAL NO. 847B	WIRING INSTRUCTION <b>58-01-1605</b>	

**EXAMPLE:**  
Component Parts (Small #) Are Included  
When Ordering The Assembly (Large #).

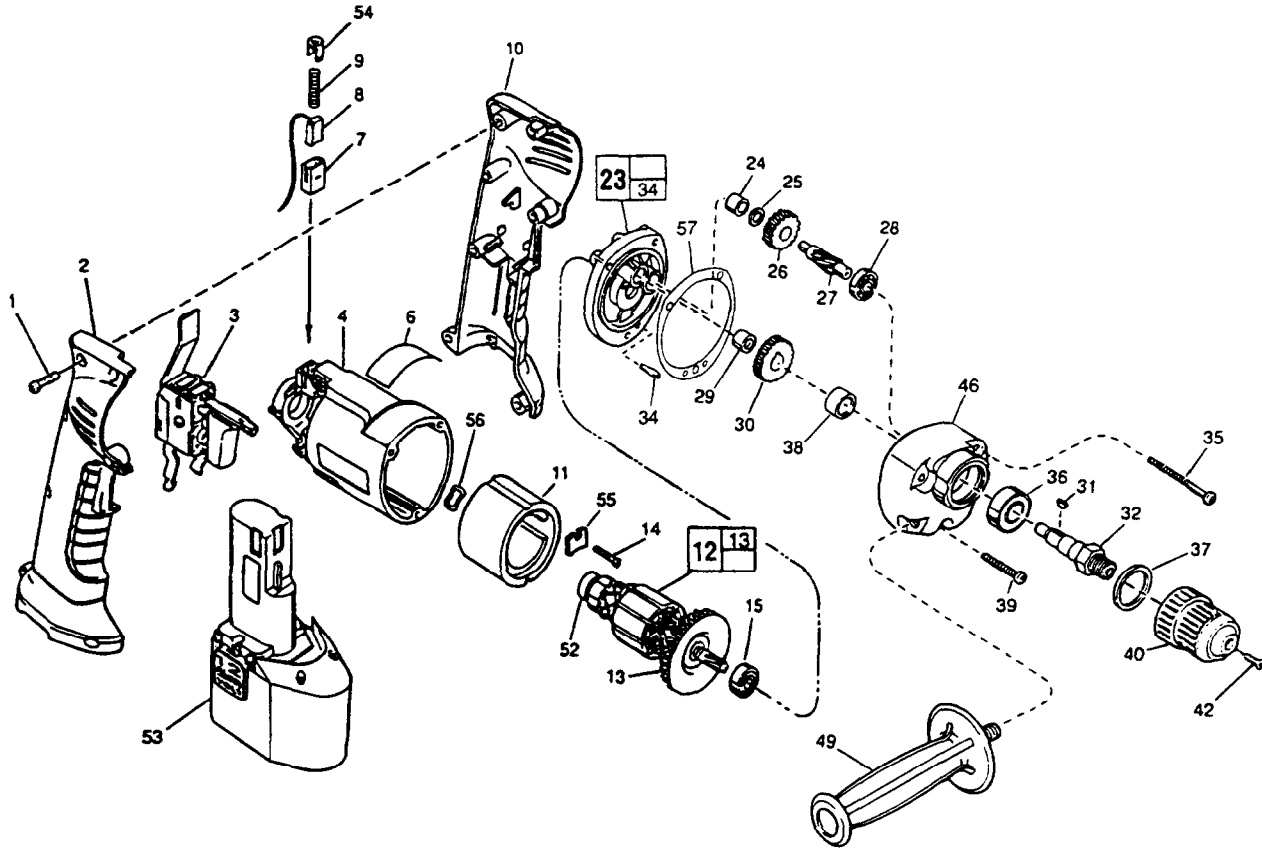


FIG.	PART NO.	DESCRIPTION OF PART	NO. REQ.
	1	06-82-9207 6-32 x 11/16" Pan Hd. Slit. Plast. T-20	(7)
	2	31-44-1885 Right Handle Half	(1)
	3	23-66-2300 Speed Control Switch	(1)
	4	31-50-1080 Motor Housing	(1)
	6	12-20-1240 Service Nameplate Kit	(1)
	7	22-20-0860 Brush Tube	(2)
	8	22-18-0840 Brush Assembly - Top	(1)
		22-18-0845 Brush Assembly - Bottom	(1)
	9	40-50-8775 Brush Spring	(2)
	10	31-44-1880 Left Handle Half	(1)
	11	18-01-0010 Field	(1)
	12	16-01-0040 Armature	(1)
	13	22-84-0830 Fan Assembly	(1)
	14	06-82-7261 6-19 x 11/16" Pan Hd. Slit. Plast. T-20	(1)
	15	02-04-0847 Ball Bearing	(1)
★	23	14-13-0520 Diaphragm Assembly	(1)
	24	02-50-1210 Needle Bearing	(1)
	25	45-88-7301 Heat Treated Washer	(1)
	26	32-40-2270 Intermediate Gear	(1)
	27	36-66-4500 Intermediate Pinion Shaft	(1)
	28	02-04-0640 Ball Bearing	(1)
	29	02-50-1611 Needle Bearing	(1)
	30	32-75-3320 Spindle Gear	(1)
	31	06-42-1200 Woodruff Key	(1)
	32	38-50-5740 Reversing Spindle	(1)
★	34	06-65-0880 Ground Pin	(1)
	35	06-82-7440 7-18 x 2-1/2" Pan Hd. Slit. Plast. T-20	(2)
	36	02-04-1229 Ball Bearing	(1)
	37	34-80-2300 Retaining Ring	(1)
	38	45-36-1100 Spindle Spacer	(1)
	39	06-82-7344 7-18 x 1-1/2" Pan Hd. Slit. Plast. T-20	(1)
	40	48-66-0410 1/2" Chuck	(1)
	42	06-75-3150 Chuck Screw - L.H. Thread	(1)

FIG.	PART NO.	DESCRIPTION OF PART	NO. REQ.
★	46	28-14-2008 Gear Case	(1)
	49	43-62-0905 Side Handle	(1)
	52	02-04-5130 Ball Bearing	(1)
	53	----- 12 Volt Battery - Select From Catalog	(1)
	54	22-32-0400 Brush Spring Clip	(2)
	55	44-66-6140 Mounting Plate	(1)
	56	45-88-5615 Wavy Spring Washer	(1)
★	57	43-44-0925 Gasket	(1)
		10-15-9490 Logo Label	(1)

**FIG. LUBRICATION**  
46 1/2 Oz. Type "E" Grease, No. 49-08-4122. Place near intermediate shaft ball bearing in gear case.

**FIG. NOTES**  
4,7,8 Slot on brush tube must be assembled on the same side as slot on motor housing. Brush assemblies must be inserted with the wire laying inside of brush tube slot. Brush must slide freely inside brush tube.  
7,54 Brush spring clip must snap into detent of brush tube.  
11 Press chamfer end first.  
15 Seal towards armature.  
24,29 Press flush to casting surface.  
35,39 Torque to 15-20 In./Lbs.  
36 Seal towards chuck.

**MILWAUKEE ELECTRIC TOOL CORPORATION**  
13135 W. LISBON RD., BROOKFIELD, WI 53005