



SERVICE PARTS LIST

BULLETIN NO.
55-06-0575

SPECIFY CATALOG NO. AND SERIAL NO. WHEN ORDERING PARTS				REVISED BULLETIN	DATE
10mm ANGLE DRILL					July 2002
CATALOG NO.	0375-50	STARTING SERIAL NO.	611A	WIRING INSTRUCTION	
				58-03-0373	

EXAMPLE:
Component Parts (Small #)
Are Included When Ordering
The Assembly (Large #).

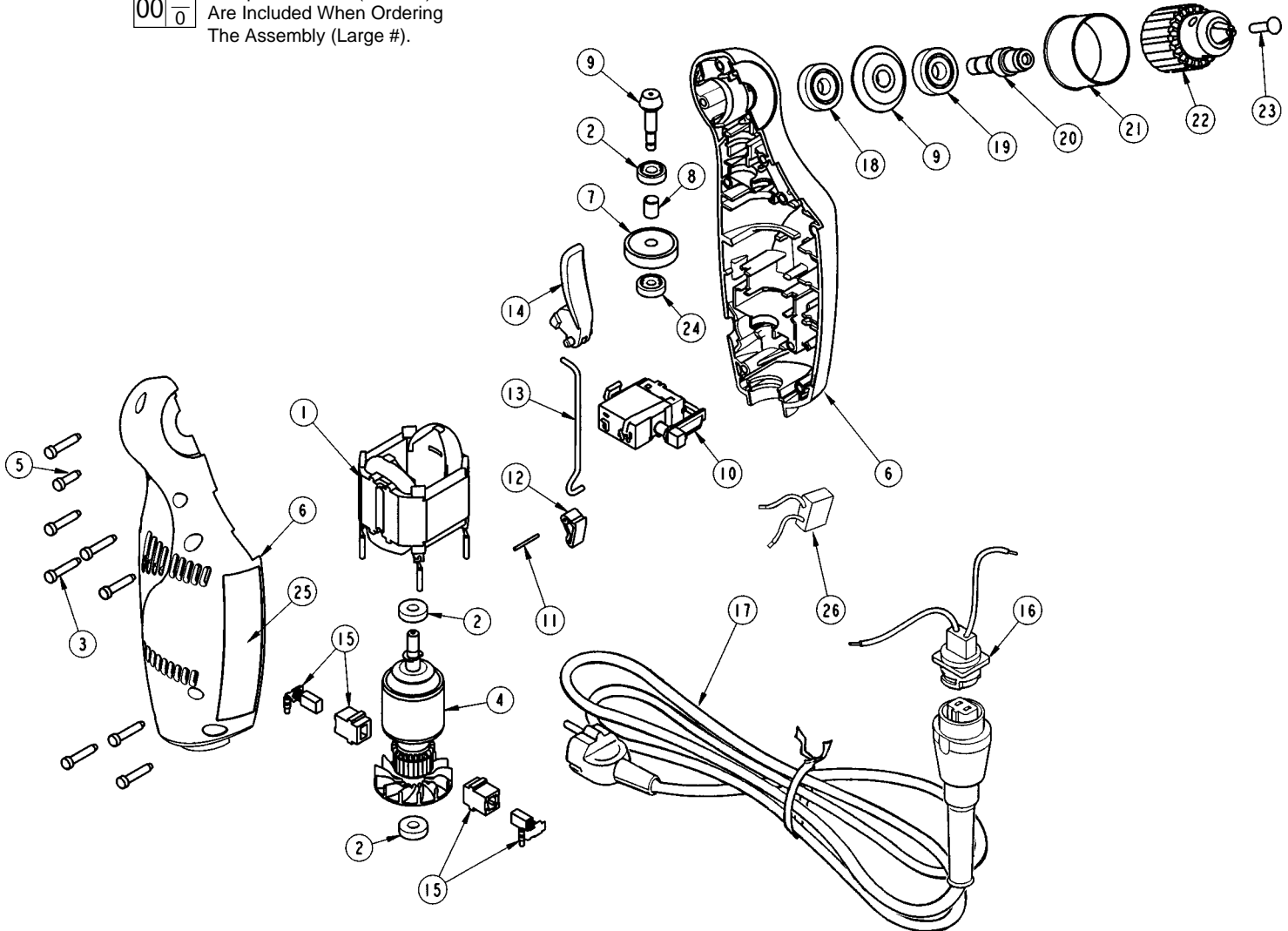


FIG.	PART NO.	DESCRIPTION OF PART	NO. REQ.
1	18-04-0650	Field	(1)
2	02-04-0300	Ball Bearing	(3)
3	05-74-0025	8-16 x .750 Fillister Hd. Screw	(8)
4	16-04-0650	Armature	(1)
5	05-74-0500	8-16 x .562 Fillister Hd. Screw	(1)
6	31-50-0462	Housing Assembly	(1)
7	32-42-1155	Helical Gear	(1)
8	45-36-1233	Spacer	(1)
9	32-60-2395	Gear & Pinion Assembly	(1)
10	23-66-1378	Switch	(1)
11	06-65-0550	Pin	(1)
12	36-17-0070	Bell Crank	(1)
13	44-94-0295	Switch Rod	(1)
14	45-72-0135	Trigger	(1)
15	22-22-1346	Brush & Holder Assembly	(2)
16	22-56-1016	Blade Housing Assembly	(1)
17	48-76-5012	Quik-Lok Cord Set	(1)
17	22-64-0684	Quik-Lok Cord Set (Australia)	(1)
18	02-04-0911	Ball Bearing	(1)
19	02-04-1000	Ball Bearing	(1)
20	38-50-5525	Output Shaft	(1)
21	43-54-0525	Chuck Shroud	(1)

FIG.	PART NO.	DESCRIPTION OF PART	NO. REQ.
22	48-66-2115	10mm Chuck	(1)
23	05-74-0513	M5 x .8 x 25 L.H. Chuck Screw	(1)
24	02-04-0450	Ball Bearing	(1)
25	12-20-0323	Service Nameplate Kit	(1)
26	22-33-0550	Suppressor	(1)
	48-66-3240	Chuck Key	(1)

FIG. LUBRICATION:

- 6 Place .80 oz. (22 gm) of Type "Z" Grease, No. 49-08-7655, in the gear cavities of the housing assembly.