



SERVICE PARTS LIST

BULLETIN NO.
54-06-0862

SPECIFY CATALOG NO. AND SERIAL NO. WHEN ORDERING PARTS		REVISED BULLETIN	DATE
1/2" KEYLESS CHUCK HOLE-SHOOTER		54-06-0861	Nov.'89
CATALOG NO. 0239-1	STARTING SERIAL NO. 756-9001	WIRING INSTRUCTION	
		58-01-0018	

00 0

EXAMPLE:
Component Parts (Small #)
Are Included When Ordering
The Assembly (Large #).

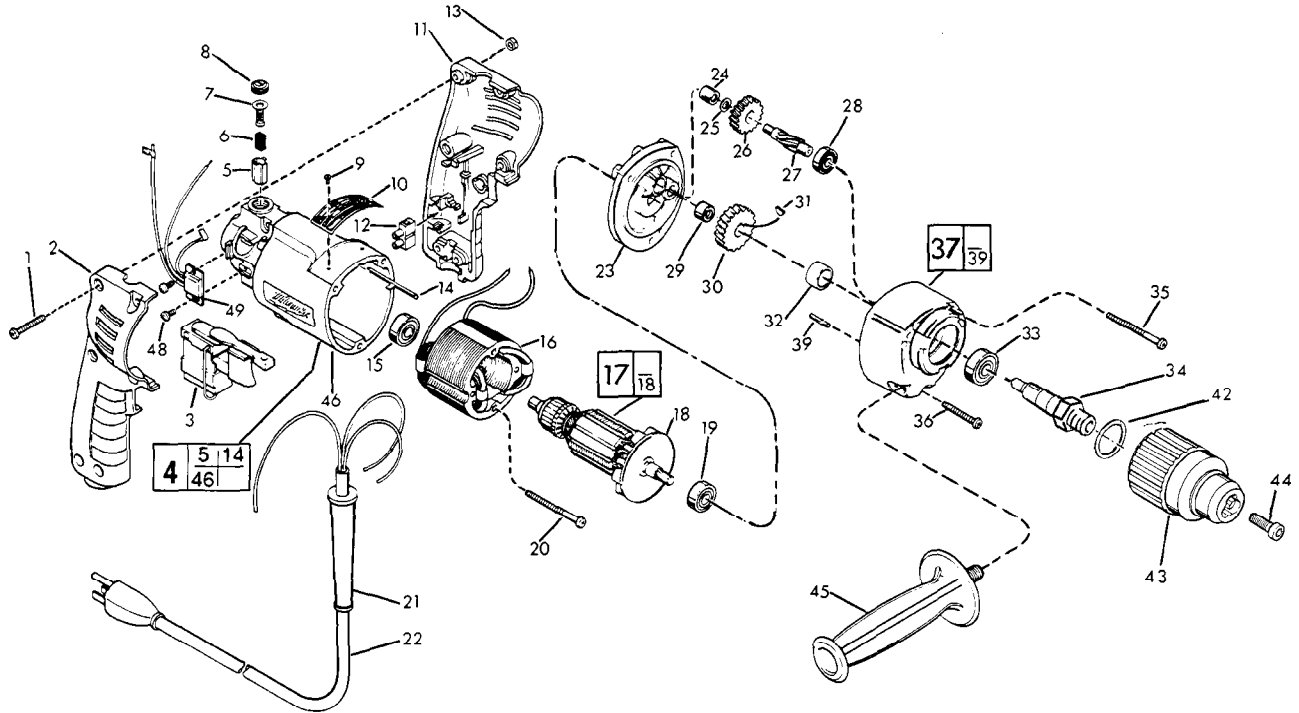


FIG.	PART NO.	DESCRIPTION OF PART	NO. REQ.
1	06-82-2361	8-32x15/16" Pan Hd. Slit. Torx Screw	(6)
2	31-44-1130	Right Handle Half	(1)
3	23-66-1655	Trigger Speed Control Switch	(1)
4	14-38-0375	Motor Housing Assembly	(1)
5	22-20-0530	Brush Tube	(2)
6	22-16-0275	Carbon Brush	(2)
7	23-52-0210	Brush Spring Assembly	(2)
8	23-44-0120	Brush Retaining Screw	(2)
9	06-85-0200	Nameplate Screw	(2)
10	12-99-0420	Nameplate Blank	(1)
11	31-44-1140	Left Handle Half	(1)
12	22-56-0456	Terminal Block	(1)
13	06-55-0835	8-32 Hex Nut	(6)
14	44-60-0530	Ground Pin	(1)
15	02-04-0645	Ball Bearing	(1)
16	18-10-0130	120 Volt Field	(1)
17	16-10-0545	120 Volt Armature	(1)
18	22-84-0440	Fan Assembly	(1)
19	02-04-0847	Ball Bearing	(1)
20	06-82-7393	7-18x2" Pan Hd. Slit Plast. Torx Screw	(2)
21	44-76-0130	Cord Protector	(1)
22	22-64-1120	Cord Set	(1)
23	28-28-1810	Diaphragm	(1)
24	02-50-1210	Needle Bearing	(1)
25	45-88-7301	Heat Treat Washer	(1)
26	32-40-2010	Intermediate Gear	(1)
27	36-66-4500	Intermediate Pinion	(1)
28	02-04-0640	Ball Bearing	(1)
29	02-50-1611	Needle Bearing	(1)
30	32-75-3320	Spindle Gear	(1)

FIG.	PART NO.	DESCRIPTION OF PART	NO. REQ.
31	06-42-1200	Woodruff Key	(1)
32	45-36-1100	Spindle Spacer	(1)
33	02-04-1230	Ball Bearing	(1)
34	38-50-5740	Spindle	(1)
35	06-82-7440	7-18x2-1/2" Pan Hd. Slit. Plast. Torx	(2)
36	06-82-7344	7-18x1-1/2" Pan Hd. Slit. Plast. Torx	(1)
37	14-30-0520	Gear Case Assembly	(1)
39	06-65-0825	Groove Pin	(1)
42	34-80-2300	Retaining Ring	(1)
★ 43	48-66-2020	1/2" Keyless Chuck	(1)
44	06-75-3150	1/4-20x1" L.H. Thrd. Skt. Hd. Screw	(1)
45	43-62-0875	Side Handle	(1)
46	31-50-0346	Motor Housing	(1)
48	06-82-7212	4-20x1/4" Pan Hd. Plast. Torx	(2)
49	14-20-0240	Remote Electronic Assembly	(1)
	10-98-6465	Bi-Lingual Label	(1)

FIG. LUBRICATION

37 1.5 Oz. Type "E" Grease, 49-08-4121. Place Grease Near Intermediate Shaft Ball Bearing In Gear Case.

FIG. NOTES

34 Apply Blue Loctite To Internal Threads Prior To Chuck Assembly

43 Hand Tighten Milwaukee Keyless Chuck Onto Spindle. Insert And Hand Tighten Chuck Retaining Screw. Insert Service Fixture 61-30-0155 Into The Chuck And Hand Tighten The Jaws Onto The Fixture. Place Fwd. / Rev. Switch In The Forward Position And Ratchet Chuck For 4 Seconds. Tighten Chuck Retaining Screw To Secure Chuck To Spindle (150 Lb./In.)

MILWAUKEE ELECTRIC TOOL CORPORATION
13135 W. LISBON RD., BROOKFIELD, WI 53005