



# SERVICE PARTS LIST

**BULLETIN NO.**  
**55-06-7000**

SPECIFY CATALOG NO. AND SERIAL NO. WHEN ORDERING PARTS		REVISED BULLETIN	DATE
1/2" T.S.C. REV. HOLE-SHOOTER		55-06-0697	Jan. '97
CATALOG NO. 0238-55	STARTING SERIAL NO. 723A	WIRING INSTRUCTION <b>58-03-1415</b>	

**EXAMPLE:**  
Component Parts (Small #)  
Are Included When Ordering  
The Assembly (Large #).

00/0

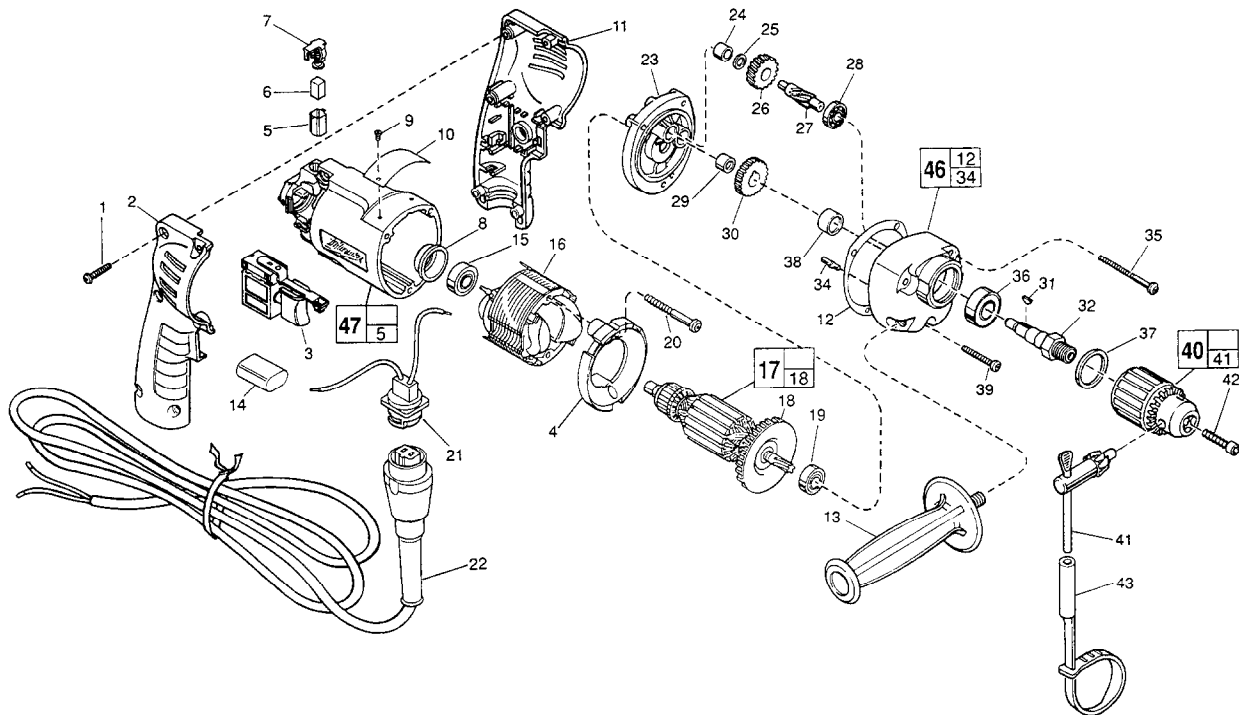


FIG. PART NO.	DESCRIPTION OF PART	NO. REQ.
1	06-82-7284 8-16 x 3/4" Pan Hd. Slit. Plast. T-20	(6)
2	31-44-1845 Right Handle Half	(1)
3	23-66-2146 Speed Control Switch	(1)
4	42-14-0380 Baffle	(1)
5	22-20-0830 Brush Tube	(2)
6	22-16-0275 Carbon Brush	(2)
7	23-52-1560 Brush Spring Assembly	(2)
8	22-72-0100 Bearing Cup	(1)
9	06-72-1720 Nameplate Rivet	(2)
10	12-99-1011 Nameplate Blank	(1)
11	31-44-1840 Left Handle Half	(1)
13	43-62-0905 Side Handle	(1)
14	22-33-0450 Suppressor	(1)
15	02-04-0645 Ball Bearing	(1)
16	18-11-0150 Field	(1)
17	16-10-0830 Armature	(1)
18	22-84-0880 Fan Assembly	(1)
19	02-04-0847 Ball Bearing	(1)
20	06-82-7203 7-18 x 2-1/8" Pan Hd. Slit. Plast. T-20	(2)
21	22-56-0688 Blade Housing Assembly	(1)
22	48-76-5011 Quik-Lok Cord Set	(1)
23	14-13-0520 Diaphragm Assembly	(1)
24	02-50-1210 Needle Bearing	(1)
25	45-88-7301 Heat Treated Washer	(1)
26	32-40-2010 Intermediate Gear	(1)
27	36-66-4500 Intermediate Pinion Shaft	(1)
28	02-04-0640 Ball Bearing	(1)
29	02-50-1611 Needle Bearing	(1)
30	32-75-3320 Spindle Gear	(1)

FIG. PART NO.	DESCRIPTION OF PART	NO. REQ.
31	06-42-1200 Woodruff Key	(1)
32	38-50-5740 Reversing Spindle	(1)
34	06-65-0880 Ground Pin	(1)
35	06-82-7440 7-18 x 2-1/2" Pan Hd. Slit. Plast. T-20	(2)
36	02-04-1229 Ball Bearing	(1)
37	34-80-2300 Retaining Ring	(1)
38	45-36-1100 Spindle Spacer	(1)
39	06-82-7344 7-18 x 1-1/2" Pan Hd. Slit. Plast. T-20	(1)
40	48-66-1360 1/2 Chuck	(1)
41	48-66-3280 Chuck Key	(1)
42	06-75-3150 Chuck Screw - L.H. Thread	(1)
43	48-66-4040 Key Holder	(1)
46	14-30-0520 Gear Case Assembly	(1)
47	14-38-0591 Motor Housing Assembly	(1)
48	43-44-0925 Gasket	(1)

**FIG. LUBRICATION**

46 1-1/2 Oz. Type "E" Grease, No. 49-08-4122. Place Grease Near Intermediate Shaft Ball Bearing in Gear Case.

**FIG. NOTES**

- 1 Torque to 18-28 In./Lbs.
- 20, 35, 39 Torque to 15-20 In./Lbs.
- 42 Torque to 40-45 In./Lbs.
- 8 Place in motor housing before inserting armature.
- 24, 29 Press flush to casting surface.
- 29 Press only on end with manufacturer ID.
- 15, 19 Seal towards armature.
- 36 Seal towards retaining ring.

**MILWAUKEE ELECTRIC TOOL CORPORATION**  
13135 W. LISBON RD., BROOKFIELD, WI 53005