



SERVICE PARTS LIST

BULLETIN NO.
55-06-0697

SPECIFY CATALOG NO. AND SERIAL NO. WHEN ORDERING PARTS		REVISED BULLETIN	DATE
1/2" T.S.C. REV. HOLE-SHOOTER		55-06-0696	May '96
CATALOG NO. 0238-4	STARTING SERIAL NO. 723D	WIRING INSTRUCTION 58-03-0023	

00 0

EXAMPLE:
Component Parts (Small #)
Are Included When Ordering
The Assembly (Large #).

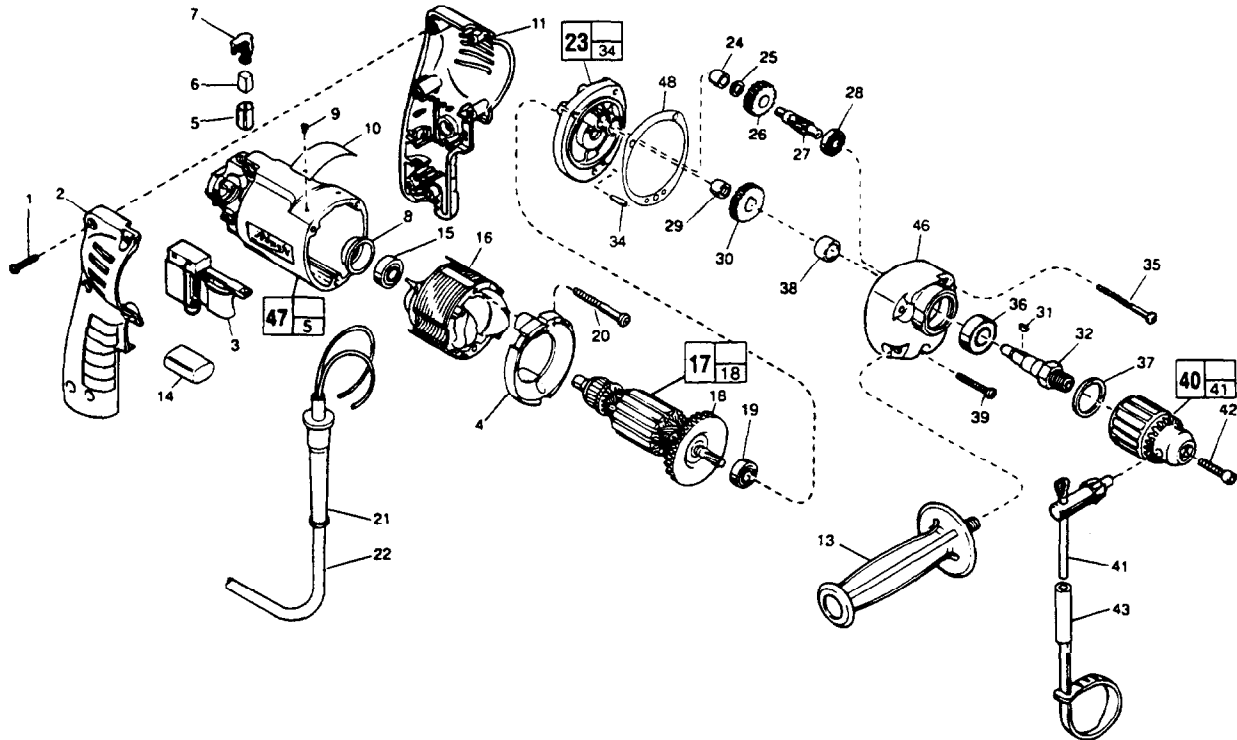


FIG.	PART NO.	DESCRIPTION OF PART	NO. REQ.
1	06-82-7284	8-16 x 3/4" Pan Hd. St. Plast. T-20	(6)
2	31-44-1745	Right Handle Half	(1)
3	23-66-2075	Speed Control Switch	(1)
4	42-14-0380	Baffle	(1)
5	22-20-0830	Brush Tube	(2)
6	22-16-0375	Carbon Brush	(2)
7	23-52-1570	Brush Spring Assembly	(2)
8	22-72-0100	Bearing Cup	(1)
9	06-72-1720	Nameplate Rivet	(2)
10	12-99-0570	Service Nameplate	(1)
11	31-44-1740	Left Handle Half	(1)
13	43-62-0875	Side Handle	(1)
14	14-20-0530	Capacitor Assembly	(1)
15	02-04-0645	Ball Bearing	(1)
16	18-12-0150	Field	(1)
17	16-14-0680	Armature	(1)
18	22-84-0880	Fan Assembly	(1)
19	02-04-0847	Ball Bearing	(1)
20	06-82-7203	7-18 x 2-1/8" Pan Hd. St. Plast. T-20	(2)
21	44-76-0210	Cord Protector	(1)
22	22-64-4480	Cord Set	(1)
★ 23	14-13-0520	Diaphragm Assembly	(1)
24	02-50-1210	Needle Bearing	(1)
25	45-88-7301	Heat Treated Washer	(1)
26	32-40-2010	Intermediate Gear	(1)
27	36-66-4500	Intermediate Pinion Shaft	(1)
28	02-04-0640	Ball Bearing	(1)
29	02-50-1611	Needle Bearing	(1)
30	32-75-3320	Spindle Gear	(1)

FIG.	PART NO.	DESCRIPTION OF PART	NO. REQ.
31	06-42-1200	Woodruff Key	(1)
32	38-50-5740	Reversing Spindle	(1)
★ 34	06-65-0880	Ground Pin	(1)
35	06-82-7440	7-18 x 2-1/2" Pan Hd. St. Plast. T-20	(2)
36	02-04-1229	Ball Bearing	(1)
37	34-80-2300	Retaining Ring	(1)
38	45-36-1100	Spindle Spacer	(1)
39	06-82-7344	7-18 x 1-1/2" Pan Hd. St. Plast. T-20	(1)
40	48-66-1365	1/2 Chuck	(1)
41	48-66-3280	Chuck Key	(1)
42	06-75-3150	Chuck Screw - L.H. Thread	(1)
43	48-66-4040	Key Holder	(1)
★ 46	28-14-2008	Gear Case	(1)
47	14-38-0591	Motor Housing Assembly	(1)
★ 48	43-44-0925	Gasket	(1)

FIG. LUBRICATION
46 1-1/2 Oz. Type "E" Grease, No. 49-08-4122. Place Grease Near Intermediate Shaft Ball Bearing In Gear Case.

FIG. NOTES
1 Torque to 18-28 In./Lbs.
20, 35, 39 Torque to 15-20 In./Lbs.
42 Torque to 40-45 In./Lbs.
8 Place in motor housing before inserting armature.
24, 29 Press flush to casting surface.
29 Press only on end with manufacturer ID.
15, 19 Seal towards armature.
36 Seal towards retaining ring.

MILWAUKEE ELECTRIC TOOL CORPORATION
13135 W. LISBON RD., BROOKFIELD, WI 53005