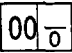




SERVICE PARTS LIST

BULLETIN NO.
55-06-0696

SPECIFY CATALOG NO. AND SERIAL NO. WHEN ORDERING PARTS		REVISED BULLETIN	DATE
1/2" T.S.C. REV. HOLE-SHOOTER		55-06-0695	Nov. '94
CATALOG NO. 0238-4	STARTING SERIAL NO. 723C	WIRING INSTRUCTION 58-03-0023	

EXAMPLE:

 Component Parts (Small #)
 Are Included When Ordering
 The Assembly (Large #).

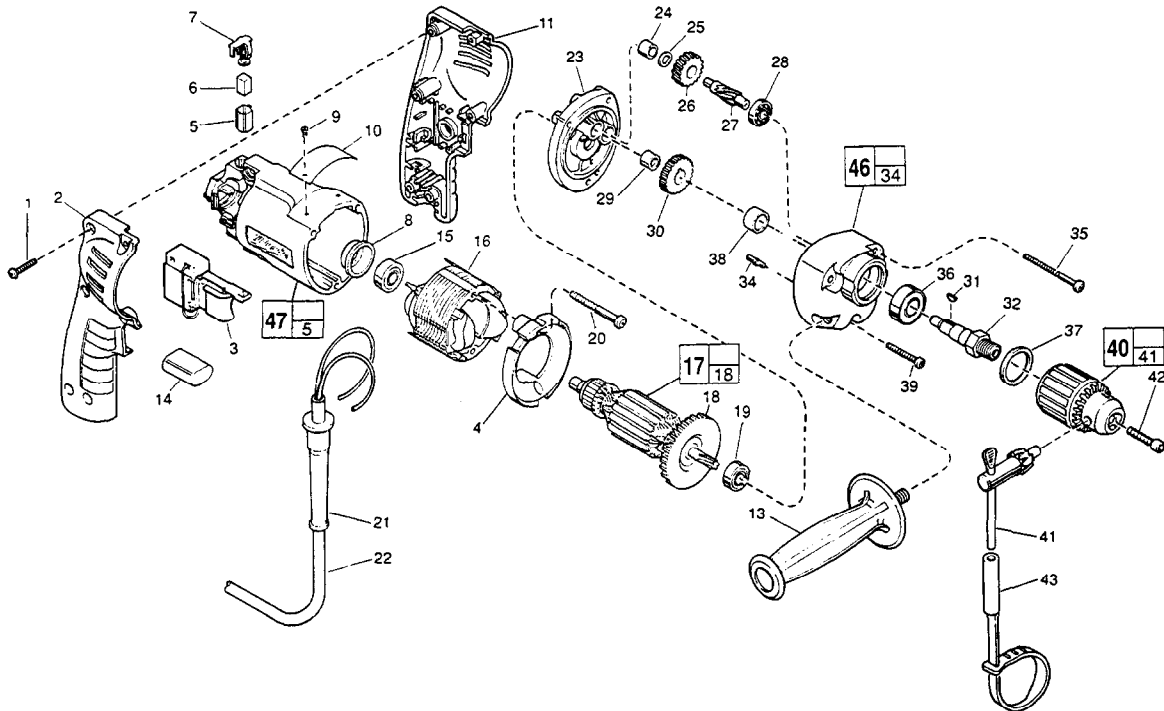


FIG.	PART NO.	DESCRIPTION OF PART	NO. REQ.
	1	8-16 x 3/4" Pan Hd. Slit. Plast. T-20	(6)
	2	Right Handle Half	(1)
	3	Speed Control Switch	(1)
	4	Baffle	(1)
	5	Brush Tube	(2)
	6	Carbon Brush	(2)
	7	Brush Spring Assembly	(2)
	8	Bearing Cup	(1)
★	9	Nameplate Rivet	(2)
	10	Service Nameplate	(1)
	11	Left Handle Half	(1)
	13	Side Handle	(1)
	14	Capacitor Assembly	(1)
	15	Ball Bearing	(1)
	16	Field	(1)
	17	Armature	(1)
	18	Fan Assembly	(1)
	19	Ball Bearing	(1)
	20	7-18 x 2-1/8" Pan Hd. Slit. Plast. T-20	(2)
	21	Cord Protector	(1)
	22	Cord Set	(1)
	23	Diaphragm	(1)
	24	Needle Bearing	(1)
	25	Heat Treated Washer	(1)
	26	Intermediate Gear	(1)
	27	Intermediate Pinion Shaft	(1)
	28	Ball Bearing	(1)
	29	Needle Bearing	(1)
	30	Spindle Gear	(1)

FIG.	PART NO.	DESCRIPTION OF PART	NO. REQ.
	31	06-42-1200 Woodruff Key	(1)
	32	38-50-5740 Reversing Spindle	(1)
	34	06-65-0825 1/8 x 1/2" Groove Pin 5	(1)
	35	06-82-7440 7-18 x 2-1/2" Pan Hd. Slit. Plast. T-20	(2)
	36	02-04-1229 Ball Bearing	(1)
	37	34-80-2300 Retaining Ring	(1)
	38	45-36-1100 Spindle Spacer	(1)
	39	06-82-7344 7-18 x 1-1/2" Pan Hd. Slit. Plast. T-20	(1)
	40	48-66-1365 1/2 Chuck	(1)
	41	48-66-3280 Chuck Key	(1)
	42	06-75-3150 Chuck Screw - L.H. Thread	(1)
	43	48-66-4040 Key Holder	(1)
★	46	14-30-0520 Gear Case Assembly	(1)
★	47	14-38-0591 Motor Housing Assembly	(1)

FIG. LUBRICATION
 46 1-1/2 Oz. Type "E" Grease, No. 49-08-4122. Place Grease Near Intermediate Shaft Ball Bearing In Gear Case.

FIG. NOTES
 1 Torque to 18-28 In./Lbs.
 20, 35, 39 Torque to 15-20 In./Lbs.
 42 Torque to 40-45 In./Lbs.
 8 Place in motor housing before inserting armature.
 24,29 Press flush to casting surface.
 29 Press only on end with manufacturer ID.
 15,19 Seal towards armature.
 36 Seal towards retaining ring.