

SERVICE PARTS LIST

BULLETIN NO.
54-06-0697

SPECIFY CATALOG NO. AND SERIAL NO. WHEN ORDERING PARTS		REVISED BULLETIN	DATE
1/2" T.S.C. REV. HOLE-SHOOTER		54-06-0696	May '99
CATALOG NO.	0238-1	WIRING INSTRUCTION	
STARTING SERIAL NO.	723D	58-01-0032	



EXAMPLE:
Component Parts (Small #)
Are Included When Ordering
The Assembly (Large #).

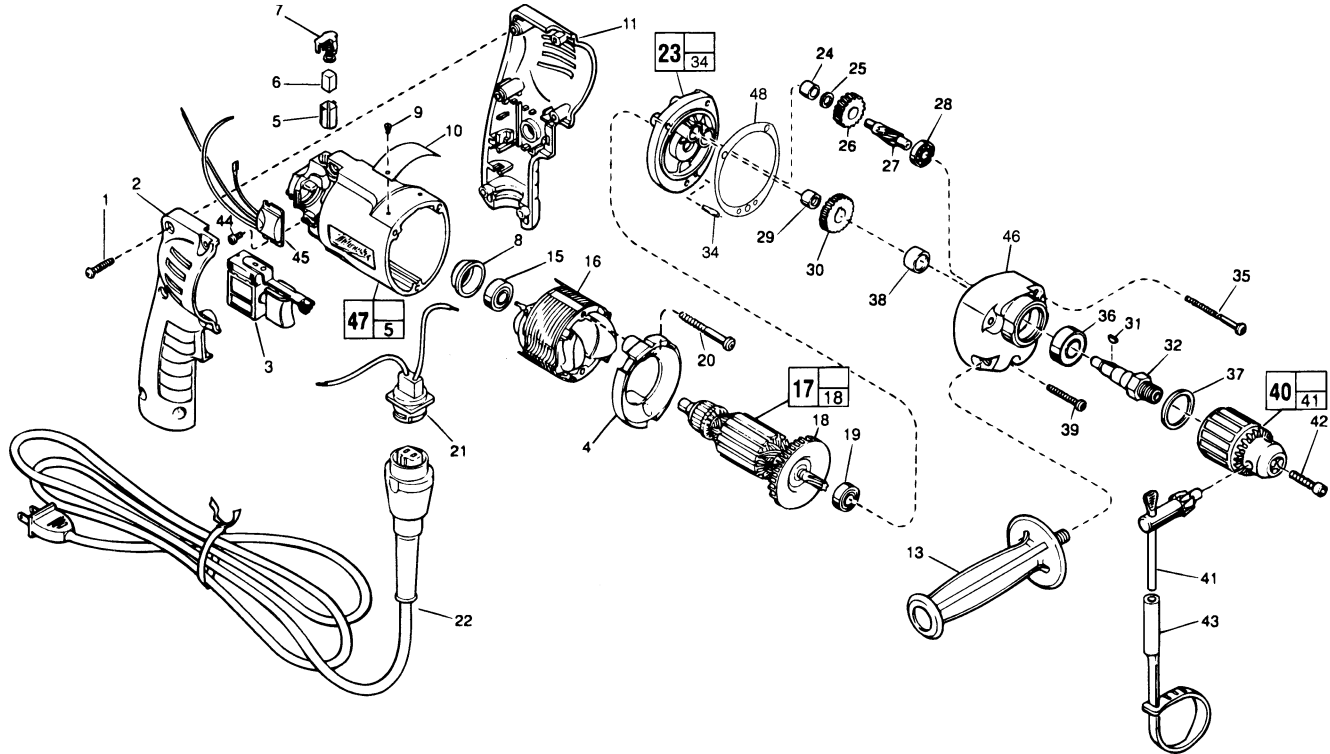


FIG.	PART NO.	DESCRIPTION OF PART	NO. REQ.	
1	06-82-7284	8-16 x 3/4" Pan Hd. Slit. Plast. T-20	(6)	
2	31-44-1845	Right Handle Half	(1)	
3	23-66-2145	Speed Control Switch	(1)	
4	42-14-0380	Baffle	(1)	
5	22-20-0830	Brush Tube	(2)	
6	22-16-0275	Carbon Brush	(2)	
7	23-52-1560	Brush Spring Assembly	(2)	
8	22-72-0100	Bearing Cup	(1)	
9	06-72-1720	Nameplate Rivet	(2)	
10	12-99-0860	Service Nameplate	(1)	
11	31-44-1840	Left Handle Half	(1)	
13	43-62-0905	Side Handle	(1)	
15	02-04-0645	Ball Bearing	(1)	
16	18-11-0150	Field	(1)	
17	16-10-0680	Armature	(1)	
18	22-84-0880	Fan Assembly	(1)	
19	02-04-0851	Ball Bearing	(1)	
20	06-82-7203	7-18 x 2-1/8" Pan Hd. Slit. Plast. T-20	(2)	
21	22-56-0665	Blade Housing Assembly	(1)	
22	48-76-5010	Cord Set	(1)	
★	23	14-13-0520	Diaphragm Assembly	(1)
	24	02-50-1210	Needle Bearing	(1)
	25	45-88-7301	Heat Treated Washer	(1)
	26	32-40-2010	Intermediate Gear	(1)
	27	36-66-4500	Intermediate Pinion Shaft	(1)
	28	02-04-0640	Ball Bearing	(1)
	29	02-50-1611	Needle Bearing	(1)
	30	32-75-3320	Spindle Gear	(1)
	31	06-42-1200	Woodruff Key	(1)
	32	38-50-5740	Reversing Spindle	(1)
★	34	06-65-0880	Ground Pin	(1)
	35	06-82-7440	7-18 x 2-1/2" Pan Hd. Slit. Plast. T-20	(2)
	36	02-04-1229	Ball Bearing	(1)

FIG.	PART NO.	DESCRIPTION OF PART	NO. REQ.	
37	34-80-2300	Retaining Ring	(1)	
38	45-36-1100	Spindle Spacer	(1)	
39	06-82-7344	7-18 x 1-1/2" Pan Hd. Slit. Plast. T-20	(1)	
40	48-66-1360	1/2 Chuck	(1)	
41	48-66-3280	Chuck Key	(1)	
42	06-75-3150	Chuck Screw - L.H. Thread	(1)	
43	48-66-4040	Key Holder	(1)	
44	06-82-7212	4-20 x 1/4" Pan Hd. Slit. Plastite T-10	(1)	
45	14-20-0750	Remote Electronic Assembly	(1)	
★	46	28-14-2008	Gear Case	(1)
★	47	14-38-0591	Motor Housing Assembly	(1)
★	48	43-44-0925	Gasket	(1)

FIG. LUBRICATION

46 1-1/2 Oz. Type "E" Grease, No. 49-08-4122. Place Grease Near Intermediate Shaft Ball Bearing In Gear Case.

FIG. NOTES

- 1 Torque to 18-28 In./Lbs.
- 20, 35, 39 Torque to 15-20 In./Lbs.
- 42 Torque to 40-45 In./Lbs.
- 44 Torque to 3-5 In./Lbs.
- 8 Place in motor housing before inserting armature.
- 24, 29 Press flush to casting surface.
- 29 Press only on end with manufacturer ID.
- 15 Seal towards armature.
- 36 Seal towards retaining ring.

MILWAUKEE ELECTRIC TOOL CORPORATION
13135 W. LISBON RD., BROOKFIELD, WI 53005