



SERVICE PARTS LIST

BULLETIN NO.
54-06-0692

SPECIFY CATALOG NO. AND SERIAL NO. WHEN ORDERING PARTS		REVISED BULLETIN	DATE
1/2" T.S.C. REV. HOLE-SHOOTER		54-06-0691	May '99
CATALOG NO. 0238-1	STARTING SERIAL NO. 723-31101	WIRING INSTRUCTION	
		58-01-0018	

EXAMPLE:
Component Parts (Small #)
Are Included When Ordering
The Assembly (Large #).

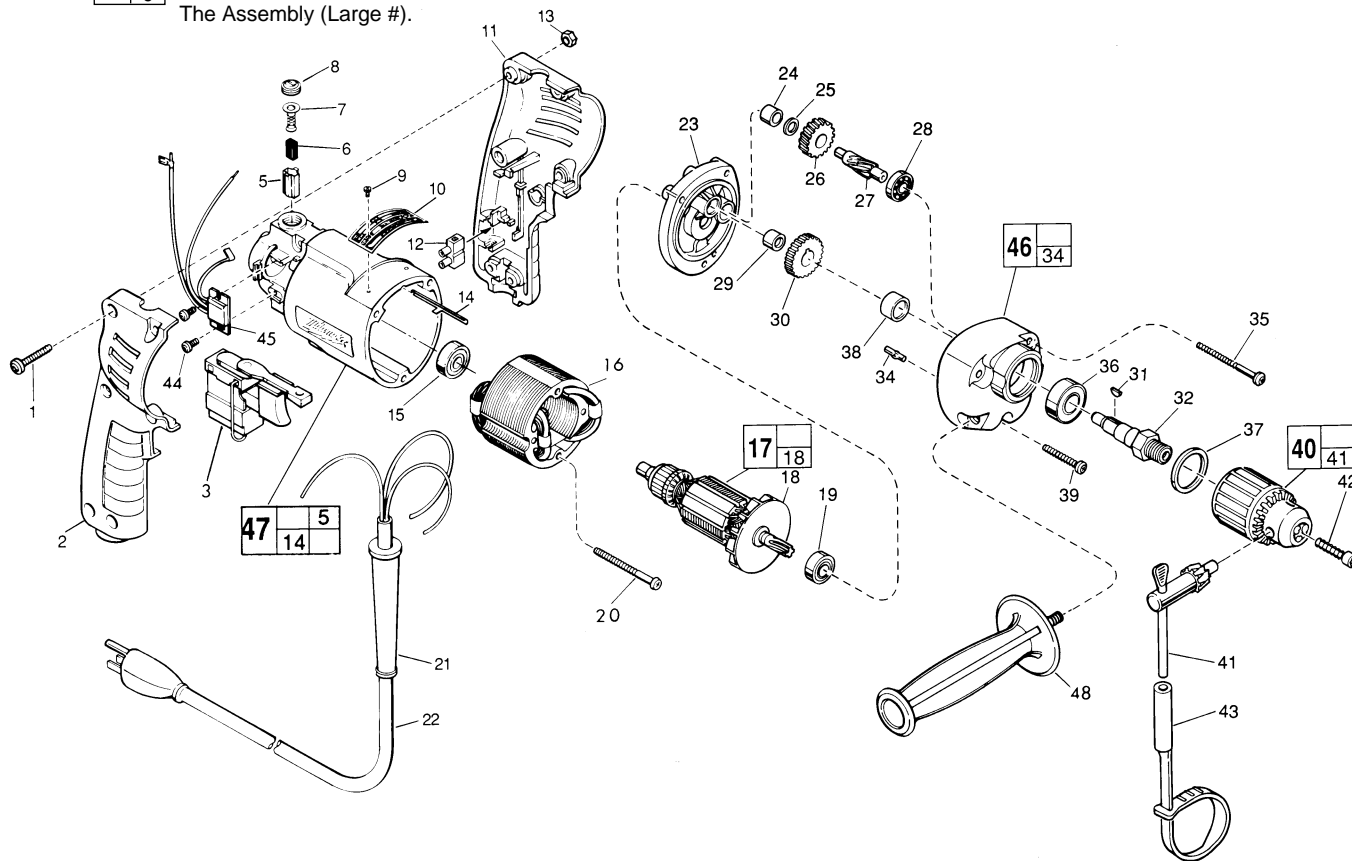


FIG.	PART NO.	DESCRIPTION OF PART	NO. REQ.
	1	06-82-2361 8-32 x 15/16" Pan Hd. Slit. Plast. T-20	(6)
	2	31-44-1130 Right Handle Half	(1)
	3	23-66-1655 Speed Control Switch	(1)
★	5	22-20-0790 Brush Tube	(2)
	6	22-16-0275 Carbon Brush	(2)
	7	23-52-0210 Brush Spring Assembly	(2)
	8	23-44-0120 Brush Retaining Screw	(2)
	9	06-85-0200 Nameplate Screw	(2)
	10	12-99-0850 Service Nameplate	(1)
	11	31-44-1140 Left Handle Half	(1)
	12	22-56-0456 Terminal Block	(1)
	13	06-55-0835 8-32 Hex Nut	(6)
	14	44-60-0530 Ground Pin	(1)
	15	02-04-0645 Ball Bearing	(1)
★	16	18-10-0130 Field	(1)
★	17	16-10-0370 Armature	(1)
★	18	22-84-0830 Fan Assembly	(1)
	19	02-04-0851 Ball Bearing	(1)
★	20	06-82-7393 7-18 x 2" Pan Hd. Slit. Plast. T-20	(2)
	21	44-76-0130 Cord Protector	(1)
★	22	22-64-3180 Cord Set	(1)
★	23	28-28-1810 Diaphragm	(1)
	24	02-50-1210 Needle Bearing	(1)
	25	45-88-7301 Heat Treated Washer	(1)
★	26	32-40-2010 Intermediate Gear	(1)
★	27	36-66-4500 Intermediate Pinion Shaft	(1)
	28	02-04-0640 Ball Bearing	(1)
★	29	02-50-1611 Needle Bearing	(1)
★	30	32-75-3320 Spindle Gear	(1)
★	31	06-42-1200 Woodruff Key	(1)
★	32	38-50-5740 Reversing Spindle	(1)
	34	06-65-0825 1/8 x 1/2" Groove Pin 5	(1)
★	35	06-82-7440 7-18 x 2-1/2" Pan Hd. Slit. Plast. T-20	(2)

FIG.	PART NO.	DESCRIPTION OF PART	NO. REQ.
★	36	02-04-1229 Ball Bearing	(1)
	37	34-80-2300 Retaining Ring	(1)
★	38	45-36-1100 Spindle Spacer	(1)
★	39	06-82-7344 7-18 x 1-1/2" Pan Hd. Slit. Plast. T-20	(1)
	40	48-66-1360 1/2 Chuck	(1)
	41	48-66-3280 Chuck Key	(1)
	42	06-75-3150 Chuck Screw - L.H. Thread	(1)
	43	48-66-4040 Key Holder	(1)
	44	06-82-7212 4-20 x 1/4" Pan Hd. Slit. Plastite T-10	(1)
	45	14-20-0240 Remote Electronic Assembly	(1)
★	46	14-30-0521 Gear Case Assembly	(1)
	47	14-38-0375 Motor Housing Assembly	(1)
	48	43-62-0905 Side Handle	(1)

FIG. LUBRICATION
46 1-1/2 Oz. Type "E" Grease, No. 49-08-4122. Place Grease Near Intermediate Shaft Ball Bearing In Gear Case.

FIG. NOTES
1 Torque to 14-18 In./Lbs.
20, 35, 39 Torque to 15-20 In./Lbs.
42 Torque to 30-35 In./Lbs.
44 Torque to 4-7 In./Lbs.
24,29 Press flush to casting surface.
29 Press only on end with manufacturer ID.
15 Seal towards armature.
36 Seal towards retaining ring.