



# SERVICE PARTS LIST

**BULLETIN NO.**  
**54-06-0691**

SPECIFY CATALOG NO. AND SERIAL NO. WHEN ORDERING PARTS		REVISED BULLETIN	DATE
<b>1/2" T.S.C. REV. HOLE-SHOOTER</b>		54-06-0690	May '99
<b>CATALOG NO. 0238-1</b>	<b>STARTING SERIAL NO. 723-15001</b>	<b>WIRING INSTRUCTION</b>	
		<b>58-01-0018</b>	

**EXAMPLE:**  
Component Parts (Small #)  
Are Included When Ordering  
The Assembly (Large #).

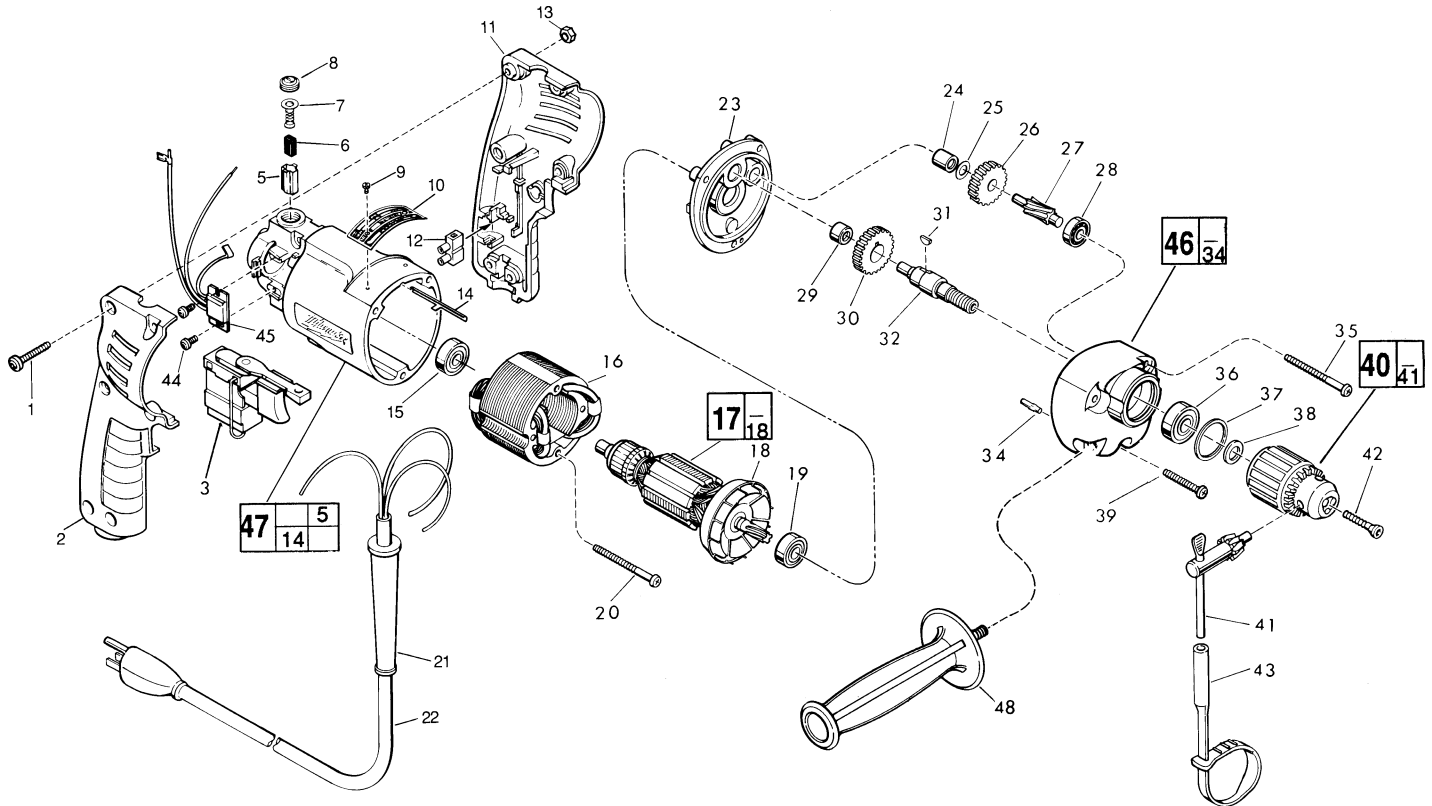


FIG.	PART NO.	DESCRIPTION OF PART	NO. REQ.
★ 1	06-82-2361	8-32 x 15/16" Pan Hd. Slit. Plast. T-20	(6)
2	31-44-1130	Right Handle Half	(1)
★ 3	23-66-1655	Speed Control Switch	(1)
5	22-20-0530	Brush Tube	(2)
6	22-16-0275	Carbon Brush	(2)
7	23-52-0210	Brush Spring Assembly	(2)
8	23-44-0120	Brush Retaining Screw	(2)
9	06-85-0200	Nameplate Screw	(2)
★ 10	12-99-0850	Service Nameplate	(1)
11	31-44-1140	Left Handle Half	(1)
★ 12	22-56-0456	Terminal Block	(1)
13	06-55-0835	8-32 Hex Nut	(6)
14	44-60-0530	Ground Pin	(1)
15	02-04-0645	Ball Bearing	(1)
16	18-10-0060	Field	(1)
17	16-10-0470	Armature	(1)
18	22-84-0760	Fan Assembly	(1)
19	02-04-0851	Ball Bearing	(1)
★ 20	06-82-7368	7-18 x 1-3/4" Pan Hd. Slit. Plast. T-20	(2)
21	44-76-0130	Cord Protector	(1)
22	22-64-1120	Cord Set	(1)
23	28-28-1770	Diaphragm	(1)
24	02-50-1210	Needle Bearing	(1)
25	45-88-7301	Heat Treated Washer	(1)
26	32-40-1950	Intermediate Gear	(1)
27	36-66-4370	Intermediate Pinion Shaft	(1)
28	02-04-0640	Ball Bearing	(1)
29	02-50-1620	Needle Bearing	(1)
30	32-75-3220	Spindle Gear	(1)
31	06-42-0800	Woodruff Key	(1)
32	38-50-5650	Reversing Spindle	(1)
34	06-65-0825	1/8 x 1/2" Groove Pin 5	(1)
35	06-82-7368	7-18 x 1-3/4" Pan Hd. Slit. Plast. T-20	(2)

FIG.	PART NO.	DESCRIPTION OF PART	NO. REQ.
36	02-04-1230	Ball Bearing	(1)
37	34-80-2300	Retaining Ring	(1)
38	45-88-0375	Chuck Washer	(1)
★ 39	06-82-7308	7-18 x 1-1/8" Pan Hd. Slit. Plast. T-20	(1)
★ 40	48-66-1360	1/2 Chuck	(1)
41	48-66-3280	Chuck Key	(1)
42	06-75-3150	Chuck Screw - L.H. Thread	(1)
43	48-66-4040	Key Holder	(1)
★ 44	06-82-7212	4-20 x 1/4" Pan Hd. Slit. Plastite T-10	(1)
★ 45	14-20-0240	Remote Electronic Assembly	(1)
46	14-30-0630	Gear Case Assembly	(1)
★ 47	14-38-0375	Motor Housing Assembly	(1)
48	43-62-0905	Side Handle	(1)

**FIG. LUBRICATION**  
46 1-1/2 Oz. Type "E" Grease, No. 49-08-4122. Place Grease Near Intermediate Shaft Ball Bearing In Gear Case.

FIG.	NOTES
1	Torque to 14-18 In./Lbs.
20, 35, 39	Torque to 15-20 In./Lbs.
42	Torque to 30-35 In./Lbs.
44	Torque to 4-7 In./Lbs.
24, 29	Press flush to casting surface.
29	Press only on end with manufacturer ID.
15, 19	Seal towards armature.
36	Seal towards retaining ring.