

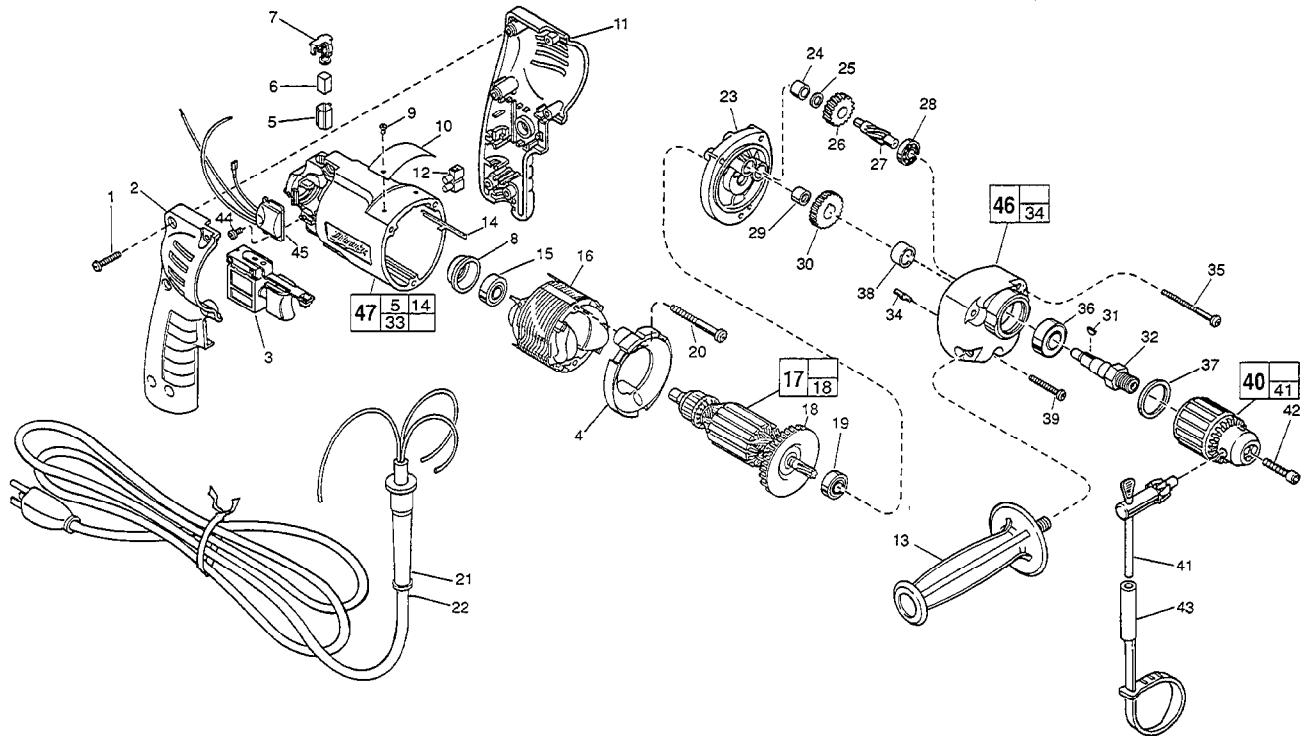


SERVICE PARTS LIST

BULLETIN NO.
54-06-0950

| | | | |
|--|--------------------------|---|----------|
| SPECIFY CATALOG NO. AND SERIAL NO. WHEN ORDERING PARTS | | REVISED BULLETIN | DATE |
| 1/2" T.S.C. REV. HOLE-SHOOTER | | | Mar. '95 |
| CATALOG NO. 0237-1 | STARTING SERIAL NO. 867A | WIRING INSTRUCTION 58-01-0031 | |

EXAMPLE:
Component Parts (Small #)
Are Included When Ordering
The Assembly (Large #).



| FIG. PART NO. | DESCRIPTION OF PART | NO. REQ. |
|---------------|--|----------|
| 1 | 06-82-7284 8-16 x 3/4" Pan Hd. St. Plast. T-20 | (6) |
| 2 | 31-44-1745 Right Handle Half | (1) |
| 3 | 23-66-2145 Speed Control Switch | (1) |
| 4 | 42-14-0380 Baffle | (1) |
| 5 | 22-20-0830 Brush Tube | (2) |
| 6 | 22-16-0275 Carbon Brush | (2) |
| 7 | 23-52-1560 Brush Spring Assembly | (2) |
| 8 | 22-72-0100 Bearing Cup | (1) |
| 9 | 06-72-1720 Nameplate Rivet | (2) |
| 10 | 12-99-0850 Service Nameplate | (1) |
| 11 | 31-44-1740 Left Handle Half | (1) |
| 12 | 22-56-0456 Terminal Block | (1) |
| 13 | 43-62-0905 Side Handle | (1) |
| 14 | 44-60-0530 Ground Pin | (1) |
| 15 | 02-04-0645 Ball Bearing | (1) |
| 16 | 18-11-0150 120 Volt Field | (1) |
| 17 | 16-10-0680 120 Volt Armature | (1) |
| 18 | 22-84-0880 Fan Assembly | (1) |
| 19 | 02-04-0847 Ball Bearing | (1) |
| 20 | 06-82-7203 7-18 x 2-1/8" Pan Hd. St. Plast. T-20 | (2) |
| 21 | 44-76-0210 Cord Protector | (1) |
| 22 | 22-64-1120 Cord Set | (1) |
| 23 | 28-28-1970 Diaphragm | (1) |
| 24 | 02-50-1210 Needle Bearing | (1) |
| 25 | 45-88-7301 Heat Treated Washer | (1) |
| 26 | 32-40-2010 Intermediate Gear | (1) |
| 27 | 36-66-4500 Intermediate Pinion Shaft | (1) |
| 28 | 02-04-0640 Ball Bearing | (1) |
| 29 | 02-50-1611 Needle Bearing | (1) |
| 30 | 32-75-3320 Spindle Gear | (1) |
| 31 | 06-42-1200 Woodruff Key | (1) |
| 32 | 38-50-5740 Reversing Spindle | (1) |
| 33 | 23-94-6225 Ground Wire Assembly (Not Shown) | (1) |
| 34 | 06-65-0825 1/8 x 1/2" Groove Pin 5 | (1) |

| FIG. PART NO. | DESCRIPTION OF PART | NO. REQ. |
|---------------|--|----------|
| 35 | 06-82-7440 7-18 x 2-1/2" Pan Hd. St. Plast. T-20 | (2) |
| 36 | 02-04-1229 Ball Bearing | (1) |
| 37 | 34-80-2300 Retaining Ring | (1) |
| 38 | 45-36-1100 Spindle Spacer | (1) |
| 39 | 06-82-7344 7-18 x 1-1/2" Pan Hd. St. Plast. T-20 | (1) |
| 40 | 48-66-1360 1/2 Chuck | (1) |
| 41 | 48-66-3280 Chuck Key | (1) |
| 42 | 06-75-3150 Chuck Screw - L.H. Thread | (1) |
| 43 | 48-66-4040 Key Holder | (1) |
| 44 | 06-82-7212 4-20 x 1/4" Pan Hd. St. Plast. T-10 | (1) |
| 45 | 14-20-0750 Remote Electronic Assembly | (1) |
| 46 | 14-30-0520 Gear Case Assembly | (1) |
| 47 | 14-38-0601 Motor Housing Assembly | (1) |

FIG. LUBRICATION
46 1-1/2 Oz. Type "E" Grease, No. 49-08-4122. Place Grease Near Intermediate Shaft Ball Bearing In Gear Case.

FIG. NOTES
1 Torque to 18-28 In./Lbs.
20, 35, 39 Torque to 15-20 In./Lbs.
42 Torque to 40-45 In./Lbs.
44 Torque to 3-5 In./Lbs.
8 Place in motor housing before inserting armature.
24, 29 Press flush to casting surface.
29 Press only on end with manufacturer ID.
15, 19 Seal towards armature.
36 Seal towards retaining ring.

MILWAUKEE ELECTRIC TOOL CORPORATION
13135 W. LISBON RD., BROOKFIELD, WI 53005