



SERVICE PARTS LIST

BULLETIN NO.
54-06-0850

SPECIFY CATALOG NO. AND SERIAL NO. WHEN ORDERING PARTS		REVISED BULLETIN	DATE
1/2" KEYLESS CHUCK MAGNUM DRILL			Aug. '87
CATALOG NO. 0235-1	STARTING SERIAL NO. 755-1001	WIRING INSTRUCTION 58-01-0072	

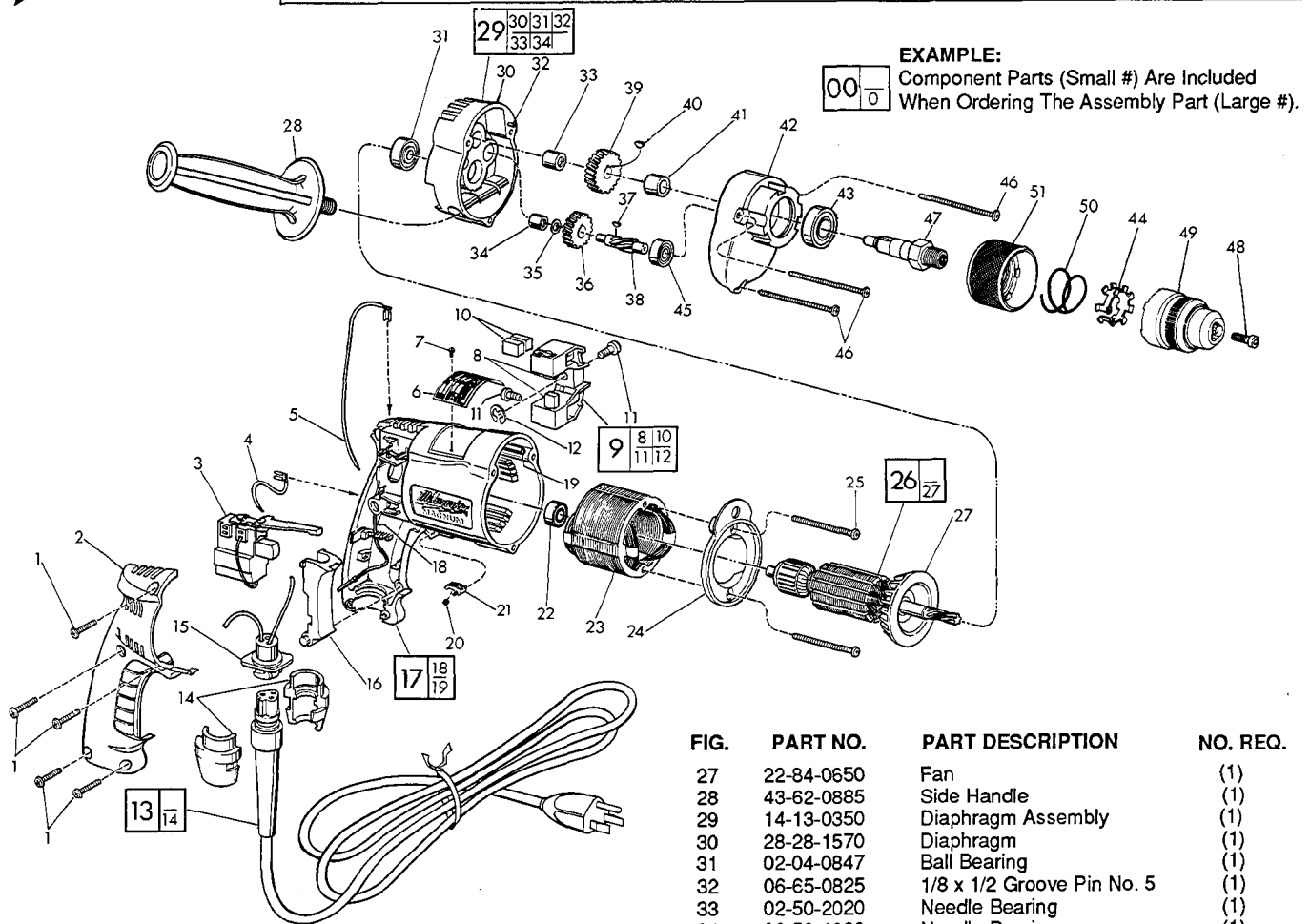


FIG.	PART NO.	PART DESCRIPTION	NO. REQ.
1	06-95-0185	7-18x11/16" Pan Hd. Plastite Screw	(5)
2	31-15-0101	Handle Cover	(1)
3	23-66-1350	Trigger Speed Control Switch	(1)
4	23-94-9635	2-1/4" Lead Assembly	(1)
5	23-94-9640	7" Lead Assembly	(1)
6	12-99-0071	Nameplate Blank	(1)
7	06-85-0200	Nameplate Screw	(2)
8	22-16-0275	Carbon Brush	(2)
9	22-22-0350	Brush Holder Assembly	(1)
10	22-16-0275	Carbon Brush (Spares)	(2)
11	31-75-0011	Brush Holder Screw	(2)
12	34-60-0500	1/4" Ext. Retaining Ring	(1)
13	48-76-3008	Cord Set	(1)
14	44-40-0440	Cord Nut	(2)
15	22-56-0302	Pin Housing Assembly	(1)
16	45-72-0080	Trigger	(1)
17	14-38-0355	Motor Housing Assembly	(1)
18	23-94-9686	Ground Wire Assembly	(1)
19	44-60-0570	Grounding Pin	(1)
20	40-50-0085	Lock Button Spring	(1)
21	42-42-0150	Lock Button	(1)
22	02-04-0645	Ball Bearing	(1)
23	18-10-0045	120 V. Field	(1)
24	31-05-0065	Baffle	(1)
25	06-95-0140	7-18x1-7/8" Pan Hd. Screw	(2)
26	16-10-0500	120 V. Armature Assembly	(1)

FIG.	PART NO.	PART DESCRIPTION	NO. REQ.
27	22-84-0650	Fan	(1)
28	43-62-0885	Side Handle	(1)
29	14-13-0350	Diaphragm Assembly	(1)
30	28-28-1570	Diaphragm	(1)
31	02-04-0847	Ball Bearing	(1)
32	06-65-0825	1/8 x 1/2 Groove Pin No. 5	(1)
33	02-50-2020	Needle Bearing	(1)
34	02-50-1620	Needle Bearing	(1)
35	45-88-7721	Heat Treated Washer	(1)
36	32-40-1815	Intermediate Gear	(1)
37	06-42-0400	Woodruff Key	(1)
38	36-66-4260	Intermediate Pinion	(1)
39	32-75-2910	Spindle Gear	(1)
40	06-42-1200	Woodruff Key	(1)
41	45-36-1100	Spacer	(1)
42	28-14-1990	Gear Case	(1)
43	02-04-1230	Ball Bearing	(1)
44	34-80-4210	Retaining Ring	(1)
45	02-04-0640	Ball Bearing	(1)
46	06-95-0150	7-18x2-3/16" Pan Hd. Screw	(3)
47	38-50-5250	Spindle - Double Reduction	(1)
48	06-75-3150	1/4-20x1" L.H. Thread Skt. Hd. Screw	(1)
49	48-66-1490	Keyless Chuck	(1)
50	40-50-8120	Spring Conical	(1)
51	42-76-0441	Collar Assembly	(1)
52	10-98-5986	Warning Label (Not Shown)	(1)
53	10-98-6465	Bi-Lingual Label (Not Shown)	(1)

FIG. LUBRICATION
42 1.5 Oz. Type 'E' Grease, 49-08-4121.
FIG. NOTES
47 Apply Blue Loctite To Internal Threads Prior To Chuck Assembly.