



# SERVICE PARTS LIST

**BULLETIN NO.**  
**54-06-0926**

SPECIFY CATALOG NO. AND SERIAL NO. WHEN ORDERING PARTS		REVISED BULLETIN 54-06-0925	DATE Nov.'94
<b>3/8" T.S.C. REV. HOLE-SHOOTER</b>		WIRING INSTRUCTION	
CATALOG NO. <b>0232-1</b>	STARTING SERIAL NO. <b>832B</b>	<b>58-01-0031</b>	

**EXAMPLE:**  
Component Parts (Small #)  
Are Included When Ordering  
The Assembly (Large #).

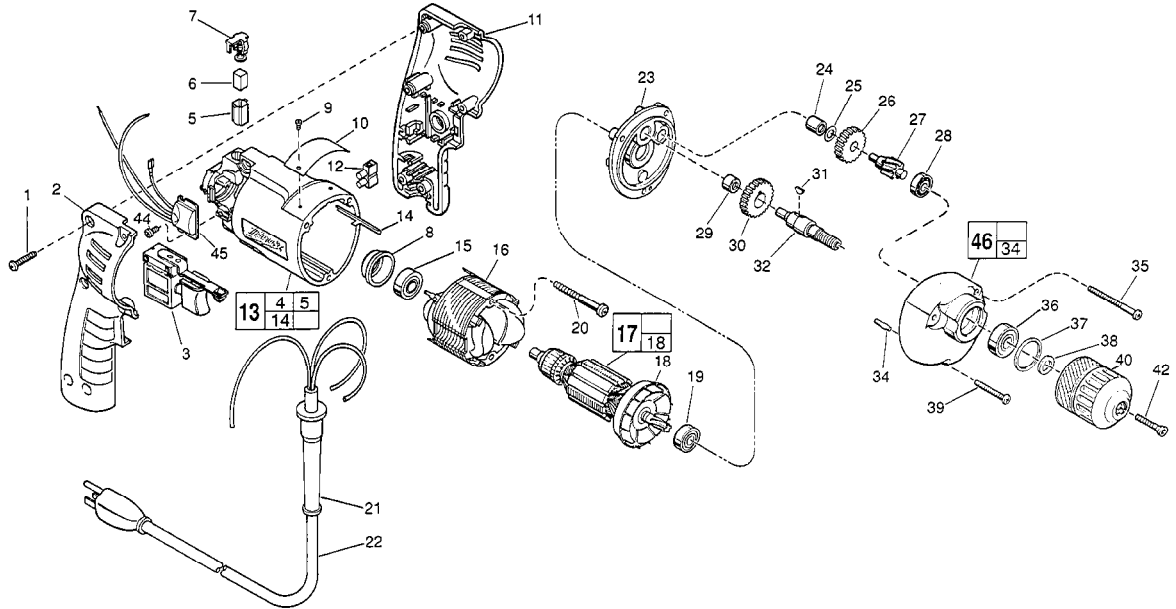


FIG.	PART NO.	DESCRIPTION OF PART	NO. REQ.
	1	06-82-7284 8-16 x 3/4" Pan Hd. Slit. Plast. T-20	(6)
	2	31-44-1745 Right Handle Half	(1)
	3	23-66-2145 Speed Control Switch	(1)
	4	23-94-6225 Ground Wire Assembly (Not Shown)	(1)
	5	22-20-0830 Brush Tube	(2)
	6	22-16-0275 Carbon Brush	(2)
	7	23-52-1560 Brush Spring Assembly	(2)
	8	22-72-0100 Bearing Cup	(1)
★	9	06-72-1720 Nameplate Rivet	(2)
	10	12-99-0850 Service Nameplate	(1)
	11	31-44-1740 Left Handle Half	(1)
	12	22-56-0456 Terminal Block	(1)
★	13	14-38-0601 Motor Housing Assembly	(1)
	14	44-60-0530 Ground Pin	(1)
	15	02-04-0645 Ball Bearing	(1)
	16	18-11-0060 120 Volt Field	(1)
	17	16-10-0470 120 Volt Armature	(1)
	18	22-84-0760 Fan Assembly	(1)
	19	02-04-0847 Ball Bearing	(1)
	20	06-82-7393 7-18 x 2" Pan Hd. Slit. Plast. T-20	(2)
	21	44-76-0210 Cord Protector	(1)
	22	22-64-1120 Cord Set	(1)
	23	28-28-1940 Diaphragm	(1)
	24	02-50-1210 Needle Bearing	(1)
	25	45-88-7301 Heat Treated Washer	(1)
	26	32-40-1950 Intermediate Gear	(1)
	27	36-66-4390 Intermediate Pinion Shaft	(1)
	28	02-04-0640 Ball Bearing	(1)
	29	02-50-1620 Needle Bearing	(1)
	30	32-75-3240 Spindle Gear	(1)

FIG.	PART NO.	DESCRIPTION OF PART	NO. REQ.
	31	06-42-0800 Woodruff Key	(1)
	32	38-50-5660 Reversing Spindle	(1)
	34	06-65-0825 1/8 x 1/2" Groove Pin 5	(1)
	35	06-82-7368 7-18 x 1-3/4" Pan Hd. Slit. Plast. T-20	(2)
	36	02-04-1020 Ball Bearing	(1)
	37	34-80-1400 Retaining Ring	(1)
	38	45-88-7940 Chuck Washer	(1)
	39	06-82-7308 7-18 x 1-1/8" Pan Hd. Slit. Plast. T-20	(1)
	40	48-66-0390 3/8" Chuck	(1)
	42	45-04-0750 Chuck Screw - L.H. Thread	(1)
	44	06-82-7212 4-20 x 1/4" Pan Hd. Slit. Plast. T-10	(1)
★	45	14-20-0750 Remote Electronic Assembly	(1)
	46	14-30-0620 Gear Case Assembly	(1)

**FIG. LUBRICATION**

46 1-1/2 Oz. Type "E" Grease, No. 49-08-4122. Place Grease Near Intermediate Shaft Ball Bearing In Gear Case.

**FIG. NOTES**

- 1 Torque to 18-28 In./Lbs.
- 20, 35, 39 Torque to 15-20 In./Lbs.
- 42 Torque to 30-50 In./Lbs.
- 44 Torque to 3-5 In./Lbs.
- 8 Place in motor housing before inserting armature.
- 24, 29 Press flush to casting surface.
- 15, 19 Seal towards armature.
- 36 Seal towards chuck.