



SERVICE PARTS LIST

BULLETIN NO.
54-06-0684

SPECIFY CATALOG NO. AND SERIAL NO. WHEN ORDERING PARTS		REVISED BULLETIN	DATE
3/8" T.S.C. REV. HOLE-SHOOTER		54-06-0683	Nov. 94
CATALOG NO. 0230-1	STARTING SERIAL NO. 732B	WIRING INSTRUCTION	
		58-01-0031	

EXAMPLE:
Component Parts (Small #)
Are Included When Ordering
The Assembly (Large #).

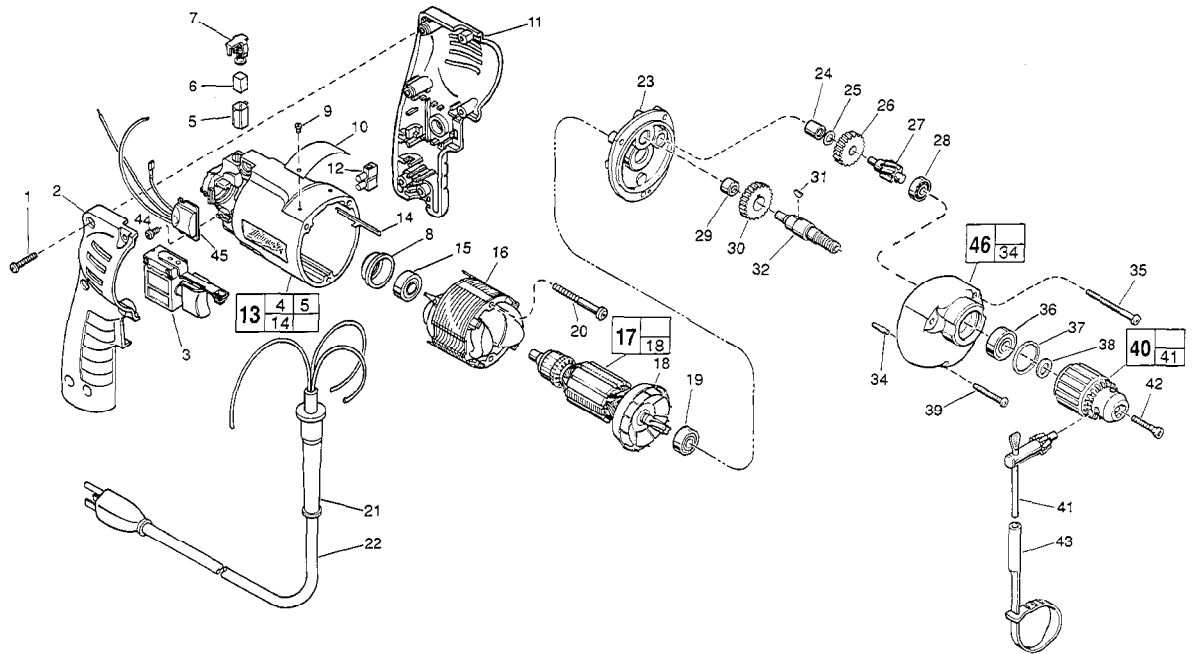


FIG. PART NO.	DESCRIPTION OF PART	NO. REQ.
1	06-82-7284 8-16 x 3/4" Pan Hd. Slit. Plast. T-20	(6)
2	31-44-1745 Right Handle Half	(1)
3	23-66-2145 Speed Control Switch	(1)
4	23-94-6225 Ground Wire Assembly (Not Shown)	(1)
5	22-20-0830 Brush Tube	(2)
6	22-16-0275 Carbon Brush	(2)
7	23-52-1560 Brush Spring Assembly	(2)
8	22-72-0100 Bearing Cup	(1)
★ 9	06-72-1720 Nameplate Rivet	(2)
10	12-99-0850 Service Nameplate	(1)
11	31-44-1740 Left Handle Half	(1)
12	22-56-0456 Terminal Block	(1)
★ 13	14-38-0601 Motor Housing Assembly	(1)
14	44-60-0530 Ground Pin	(1)
15	02-04-0645 Ball Bearing	(1)
16	18-11-0060 120 Volt Field	(1)
17	16-10-0470 120 Volt Armature	(1)
18	22-84-0760 Fan Assembly	(1)
19	02-04-0847 Ball Bearing	(1)
20	06-82-7393 7-18 x 2" Pan Hd. Slit. Plast. T-20	(2)
21	44-76-0210 Cord Protector	(1)
22	22-64-1120 Cord Set	(1)
23	28-28-1940 Diaphragm	(1)
24	02-50-1210 Needle Bearing	(1)
25	45-88-7301 Heat Treated Washer	(1)
26	32-40-1950 Intermediate Gear	(1)
27	36-66-4390 Intermediate Pinion Shaft	(1)
28	02-04-0640 Ball Bearing	(1)
29	02-50-1620 Needle Bearing	(1)
30	32-75-3240 Spindle Gear	(1)

FIG. PART NO.	DESCRIPTION OF PART	NO. REQ.
31	06-42-0800 Woodruff Key	(1)
32	38-50-5660 Reversing Spindle	(1)
34	06-65-0825 1/8 x 1/2" Groove Pin 5	(1)
35	06-82-7368 7-18 x 1-3/4" Pan Hd. Slit. Plast. T-20	(2)
36	02-04-1020 Ball Bearing	(1)
37	34-80-1400 Retaining Ring	(1)
38	45-88-7940 Chuck Washer	(1)
39	06-82-7308 7-18 x 1-1/8" Pan Hd. Slit. Plast. T-20	(1)
40	48-66-0795 3/8" Chuck	(1)
41	48-66-3240 Chuck Key	(1)
42	45-04-0750 Chuck Screw - L.H. Thread	(1)
43	48-66-4040 Key Holder	(1)
44	06-82-7212 4-20 x 1/4" Pan Hd. Slit. Plast. T-10	(1)
★ 45	14-20-0750 Remote Electronic Assembly	(1)
46	14-30-0620 Gear Case Assembly	(1)

FIG. LUBRICATION

46 1-1/2 Oz. Type "E" Grease, No. 49-08-4122. Place Grease Near Intermediate Shaft Ball Bearing In Gear Case.

FIG. NOTES

FIG.	NOTES
1	Torque to 18-28 In./Lbs.
20, 35, 39	Torque to 15-20 In./Lbs.
42	Torque to 30-50 In./Lbs.
44	Torque to 3-5 In./Lbs.
8	Place in motor housing before inserting armature.
24, 29	Press flush to casting surface.
15, 19	Seal towards armature.
36	Seal towards chuck.

MILWAUKEE ELECTRIC TOOL CORPORATION
13135 W. LISBON RD., BROOKFIELD, WI 53005