



SERVICE PARTS LIST

BULLETIN NO.
54-06-1955

SPECIFY CATALOG NO. AND SERIAL NO. WHEN ORDERING PARTS		REVISED BULLETIN	DATE
3/8" KEYLESS CHUCK MAGNUM DRILL		54-06-1954	Nov. '96
CATALOG NO.	STARTING SERIAL NO.	WIRING INSTRUCTION	
0225-1	796B	58-01-1650	

EXAMPLE:
Component Parts (Small #)
Are Included When Ordering
The Assembly (Large #).

00 0

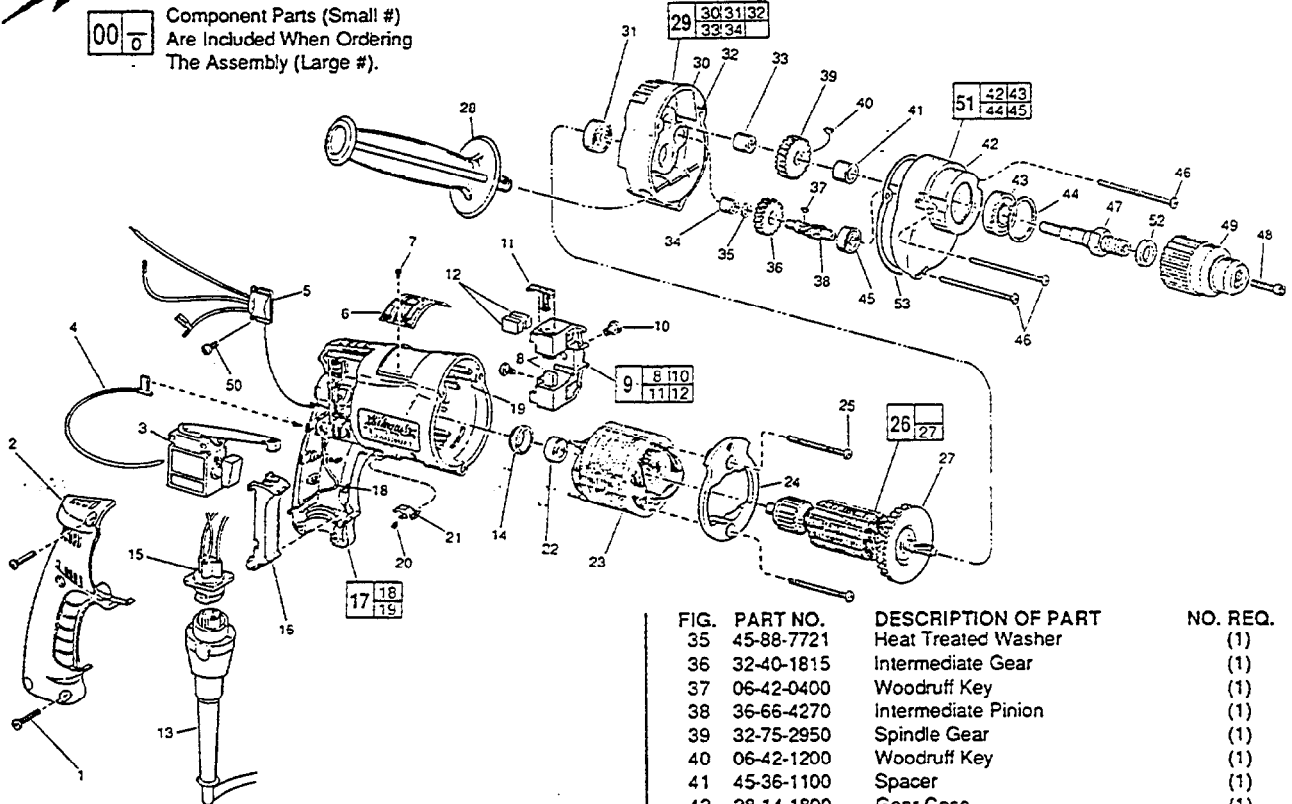


FIG.	PART NO.	DESCRIPTION OF PART	NO. REQ.
	1	06-82-7266 7-18 x 11/16" Pan Hd. Plastite T-20	(5)
	2	31-15-0402 Handle Cover	(1)
*	3	23-66-1666 Trigger Speed Control Switch	(1)
*	4	23-94-6247 2-1/4" Lead Assembly	(1)
*	5	14-20-0795 Remote Electronic Assembly	(1)
	6	12-99-0071 Nameplate Blank	(1)
	7	06-72-1720 Nameplate Rivet	(2)
	8	22-16-0275 Carbon Brush	(2)
	9	22-22-0351 Brush Holder Assembly	(1)
	10	31-75-0040 Brush Holder Screw	(2)
	11	22-20-0345 Brush Spring Assembly	(2)
	12	22-16-0275 Carbon Brush (Spares)	(2)
	13	48-76-4008 Cord Set	(1)
	14	22-72-0100 Bearing Cup	(1)
*	15	22-56-0807 Pin Housing Assembly	(1)
*	16	45-72-0081 Trigger	(1)
	17	14-38-0540 Motor Housing Assembly	(1)
	18	23-94-9960 Ground Wire Assembly	(1)
	19	44-60-1290 Grounding Pin	(1)
	20	40-50-0085 Lock Button Spring	(1)
	21	42-42-0460 Lock Button	(1)
	22	02-04-0645 Ball Bearing	(1)
	23	18-11-0075 120 Volt Field	(1)
	24	42-14-0390 Baffle	(1)
	25	06-82-7398 7-18 x 2-1/16" Pan Hd. Plastite T-20	(2)
	26	16-10-0800 120 Volt Armature Assembly	(1)
	27	22-84-0880 Fan	(1)
	28	43-62-0885 Side Handle	(1)
	29	14-13-0497 Diaphragm Assembly	(1)
	30	Diaphragm	(1)
	31	02-04-0847 Ball Bearing	(1)
	32	06-65-0880 Ground Pin	(1)
	33	02-50-2020 Needle Bearing	(1)
	34	02-50-1620 Needle Bearing	(1)

FIG.	PART NO.	DESCRIPTION OF PART	NO. REQ.
	35	45-88-7721 Heat Treated Washer	(1)
	36	32-40-1815 Intermediate Gear	(1)
	37	06-42-0400 Woodruff Key	(1)
	38	36-66-4270 Intermediate Pinion	(1)
	39	32-75-2950 Spindle Gear	(1)
	40	06-42-1200 Woodruff Key	(1)
	41	45-36-1100 Spacer	(1)
	42	28-14-1800 Gear Case	(1)
	43	02-04-1229 Ball Bearing	(1)
	44	34-80-2300 Retaining Ring	(1)
	45	02-04-0640 Ball Bearing	(1)
	46	06-82-7411 7-18 x 2-3/16" Pan Hd. Plastite T-20	(3)
	47	38-50-5266 Spindle - Double Reduction	(1)
	48	45-04-0755 Chuck Screw	(1)
	49	48-66-2030 Keyless Chuck	(1)
	50	06-82-7212 4-20 x 1/4" Pan Hd. Plastite T-10	(1)
	51	14-30-0335 Gear Case Assembly	(1)
	52	45-88-7940 Chuck Washer	(1)
	53	43-44-0913 Gasket	(1)
*	23-94-6232	4" Lead Assembly	(1)
*	23-94-6237	4-1/8" Lead Assembly	(1)
*	23-94-6242	3-3/8" Lead Assembly	(1)
	10-98-5986	Warning Label	(1)

FIG. LUBRICATION

42 1.5 Oz. Type "E" Grease, 49-08-4122. Place Grease Near Intermediate Shaft Ball Bearing In Gear Case.

FIG. NOTES

- 47,48,49 New Chuck Screw, No. 06-75-3155, Is Pretreated With Fastener Adhesive. When Replacing Chuck With Existing Chuck Screw: Apply Fastener Adhesive To Chuck Screw Threads And Internal Threads Of Spindle Prior to Chuck Assembly.
- 49 Hand Tighten Milwaukee Keyless Chuck Onto Spindle. Insert And Hand Tighten Chuck Retaining Screw. Insert Service Fixture 61-30-0155 Into The Chuck And Hand Tighten The Jaws Onto The Fixture. Place Fwd./Rev. Switch In The Forward Position And Ratchet Chuck For 4 Seconds. Tighten Chuck Retaining Screw To Secure Chuck To Spindle (150 Lb./In.).

MILWAUKEE ELECTRIC TOOL CORPORATION
13135 W. LISBON RD., BROOKFIELD, WI 53005