



SERVICE PARTS LIST

BULLETIN NO.
54-06-2308

SPECIFY CATALOG NO. AND SERIAL NO. WHEN ORDERING PARTS		REVISED BULLETIN 54-06-2307	DATE Apr. '92
3/8" T.S.C. REV. HOLE-SHOOTER		WIRING INSTRUCTION 58-01-0018	
CATALOG NO. 0222-1	STARTING SERIAL NO. 430-967501		

EXAMPLE:
Component Parts (Small #)
Are Included When Ordering
The Assembly (Large #)

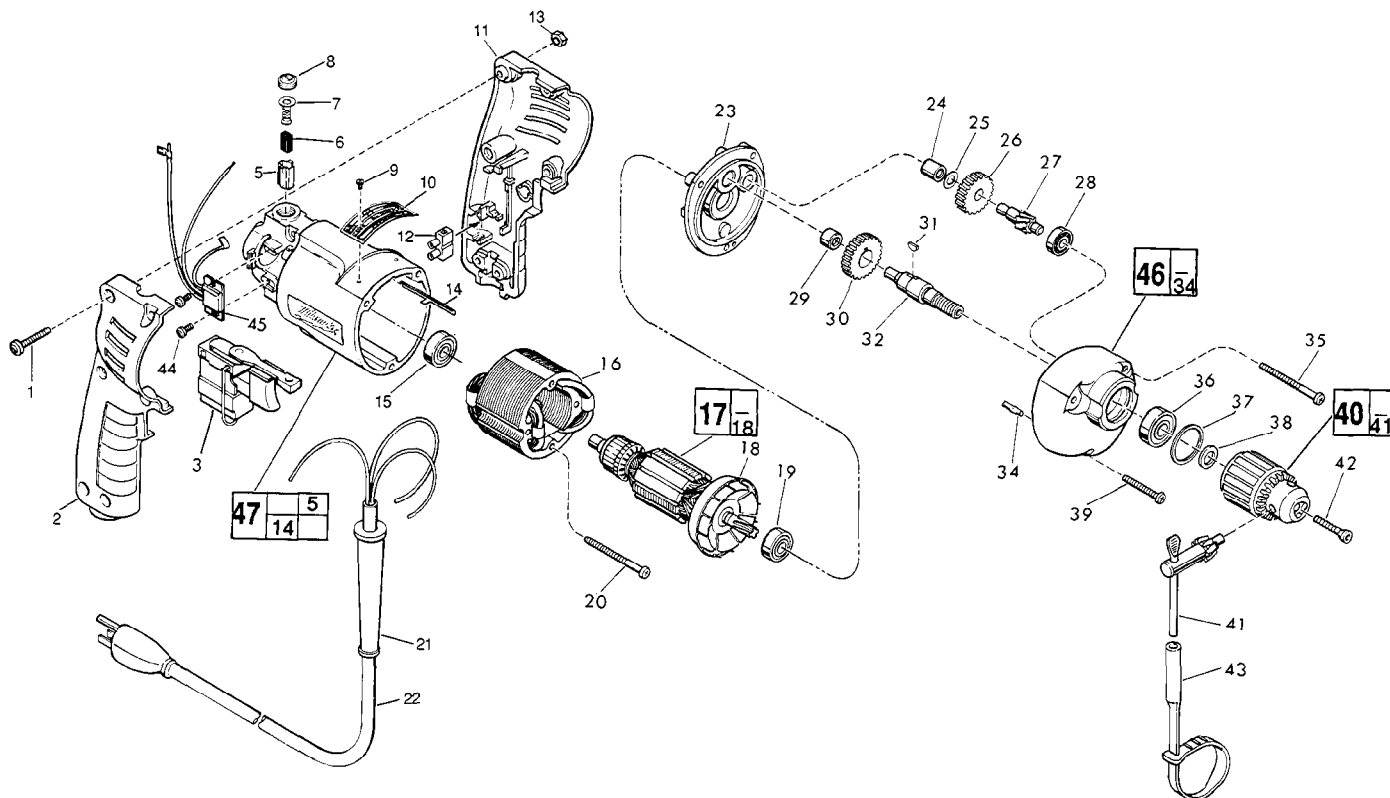


FIG.	PART NO.	DESCRIPTION	NO. REQ.
★	1	06-82-2361 8-32 x 15/16" Pan Hd. Slit. T-20	(6)
	2	31-44-1130 Right Handle Half	(1)
★	3	23-66-1655 Speed Control Switch	(1)
	5	22-20-0530 Brush Tube	(2)
	6	22-16-0275 Carbon Brush	(2)
	7	23-52-0210 Brush Retaining Assembly	(2)
	8	23-44-0120 Brush Retaining Screw	(2)
	9	06-85-0200 Nameplate Screw	(2)
	10	12-99-0850 Service Nameplate	(1)
	11	31-44-1140 Left Handle Half	(1)
★	12	22-56-0456 Terminal Block	(1)
	13	06-55-0835 8-32 Hex Nut	(6)
	14	44-60-0530 Ground Pin	(1)
	15	02-04-0645 Ball Bearing	(1)
	16	18-10-0060 120 Volt Field	(1)
	17	16-10-0470 120 Volt D.I. Armature	(1)
	18	22-84-0760 Fan Assembly	(1)
	19	02-04-0847 Ball Bearing	(1)
★	20	06-82-7368 7-18x1-3/4" Pan Hd. Slit. Plast. T-20	(2)
	21	44-76-0130 Cord Protector	(1)
	22	22-64-1120 Cord Set	(1)
	23	28-28-1770 Diaphragm	(1)
	24	02-50-1210 Needle Bearing	(1)
	25	45-88-7301 Heat Treated Washer	(1)
	26	32-40-1950 Intermediate Gear	(1)
	27	36-66-4380 Intermediate Pinion Shaft	(1)
	28	02-04-0640 Ball Bearing	(1)
	29	02-50-1620 Needle Bearing	(1)
	30	32-75-3230 Spindle Gear	(1)

FIG.	PART NO.	DESCRIPTION	NO. REQ.
	31	06-42-0800 Woodruff Key	(1)
	32	38-50-5660 Reversing Spindle	(1)
	34	06-65-0825 1/8 x 1/2" Groove Pin 5	(1)
★	35	06-82-7368 7-18x1-3/4" Pan Hd. Slit. Plast T-20	(2)
	36	02-04-1020 Ball Bearing	(1)
	37	34-80-1400 Retaining Ring	(1)
	38	45-88-7940 Chuck Washer	(1)
★	39	06-82-7308 7x1-1/8" Pan Hd. Slit. Plast. T-20	(1)
	40	48-66-0805 3/8" Chuck	(1)
	41	48-66-3080 Chuck Key	(1)
	42	45-04-0750 Chuck Screw - L.H. Thread	(1)
	43	48-66-4040 Key Holder	(1)
★	44	06-82-7212 4-20x1/4" Pan Hd. Slit. Plast.T-10	(2)
★	45	14-20-0240 Remote Electronic Assembly	(1)
	46	14-30-0620 Gear Case Assembly	(1)
★	47	14-38-0375 Motor Housing Assembly	(1)

FIG LUBRICATION
46 1-1/2 Oz. Type "E" Grease, No. 49-08-4122. Place Grease Near Intermediate Shaft Ball Bearing In Gear Case.

FIG.	NOTES
1	Torque to 14-18 In./Lbs.
20, 35, 39	Torque to 15-20 In./Lbs.
42	Torque to 30-35 In./Lbs.
44	Torque to 4-7 In./Lbs.

MILWAUKEE ELECTRIC TOOL CORPORATION
13135 W. LISBON RD., BROOKFIELD, WI 53005