



# SERVICE PARTS LIST

**BULLETIN NO.**  
54-06-2307

SPECIFY CATALOG NO. AND SERIAL NO. WHEN ORDERING PARTS		REVISED BULLETIN 54-06-2306	DATE Nov. '85
<b>3/8" T.C.S. REV. PISTOL DRILL</b>			
<b>CATALOG NO. 0222-1</b>	<b>STARTING SERIAL NO. 430-864000</b>	<b>WIRING INSTRUCTION 58-01-0015</b>	

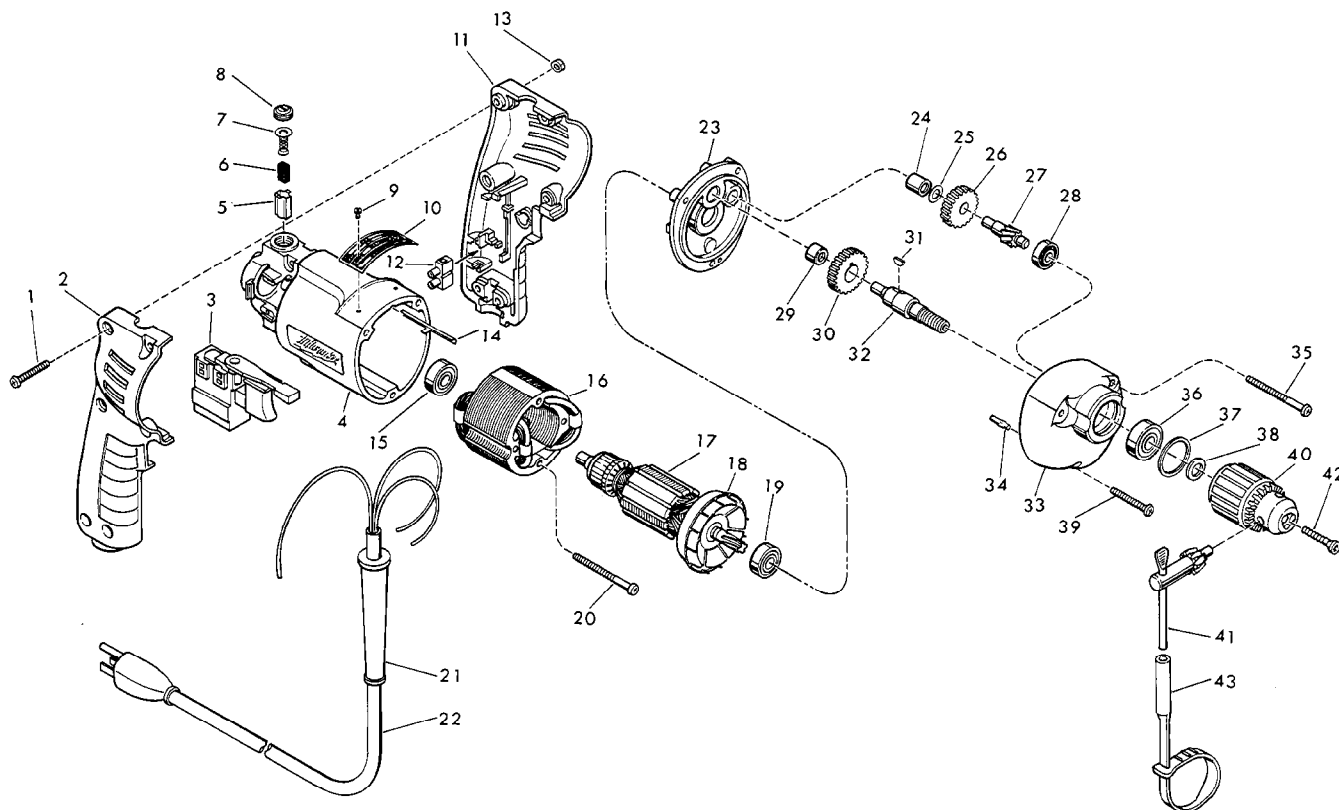


FIG.	PART NO.	DESCRIPTION OF PART	NO. REQ.	FIG.	PART NO.	DESCRIPTION OF PART	NO. REQ.
★	1	06-81-0473 8-32 x 1" Pan Hd. Pozi Dr. Screw	(6)	★	25	45-88-7301 Heat Treated Washer	(1)
★	2	31-44-1130 Right Handle Half	(1)	★	26	32-40-1950 Intermediate Gear	(1)
★	3	23-66-1245 Speed Control Switch	(1)	★	27	36-66-4380 Intermediate Shaft	(1)
★	4	31-50-0345 Motor Housing	(1)	★	28	02-04-0640 Ball Bearing	(1)
★	5	22-20-0530 Brush Tube	(2)	★	29	02-50-1620 Needle Bearing	(1)
★	6	22-16-0275 Carbon Brush	(2)	★	30	32-75-3230 Spindle Gear	(1)
★	7	23-52-0210 Brush Spring Assembly	(2)	★	31	06-42-0800 Woodruff Key	(1)
★	8	23-44-0120 Brush Retaining Screw	(2)	★	32	38-50-5660 Reversing Spindle	(1)
★	9	06-85-0200 Nameplate Screw	(2)	★	33	28-14-1820 Gear Case	(1)
★	10	12-99-0420 Nameplate Blank	(1)	★	34	06-65-0825 1/8 x 1/2" Groove Pin 5	(1)
★	11	31-44-1140 Left Handle Half	(1)	★	35	06-95-0145 7-18 x 1-3/4" Pan Hd. Pozi Driv Screw	(2)
★	12	22-56-0455 Terminal Block	(1)	★	36	02-04-1020 Ball Bearing	(1)
★	13	06-55-0835 8-32 Hex Nut	(6)	★	37	34-80-1400 Retaining Ring	(1)
★	14	44-60-0530 Ground Pin	(1)	★	38	45-88-7940 Chuck Washer	(1)
★	15	02-04-0645 Ball Bearing	(1)	★	39	06-95-0137 7 x 1-1/8" Pan Hd. Pozi Dr. Screw	(1)
★	16	18-10-0060 120V Field	(1)	★	40	48-66-0805 3/8" Chuck - (Includes Fig. No. 41)	(1)
★	17	16-10-0470 120V D.I. Armature - (Incl. Fig. No. 18)	(1)	★	41	48-66-3080 Chuck Key	(1)
★	18	22-84-0760 Fan Assembly	(1)	★	42	45-04-0750 Chuck Screw - L.H. Thread	(1)
★	19	02-04-0847 Ball Bearing	(1)	★	43	48-66-4040 Key Holder	(1)
★	20	06-95-0145 7-18 x 1-3/4" Pan Hd. Pozi Driv Screw	(2)				
★	21	44-76-0130 Cord Protector	(1)				
★	22	22-64-1120 Cord Set	(1)				
★	23	28-28-1770 Diaphragm	(1)				
★	24	02-50-1210 Needle Bearing	(1)				

### LUBRICATION

Use 1-1/2 Oz. Of Type "E" Grease In Gear Case