



SERVICE PARTS LIST

5/16" PISTOL DRILL

BUL. 54-06-1604

REVISED BUL. 54-06-1603 DATE July '72

Catalog No. 0200

Starting Serial No. 89-9081

WIRING INSTR. 58-01-0010

Both Model and Serial No. must be furnished to obtain correct parts.

1000 R.P.M.

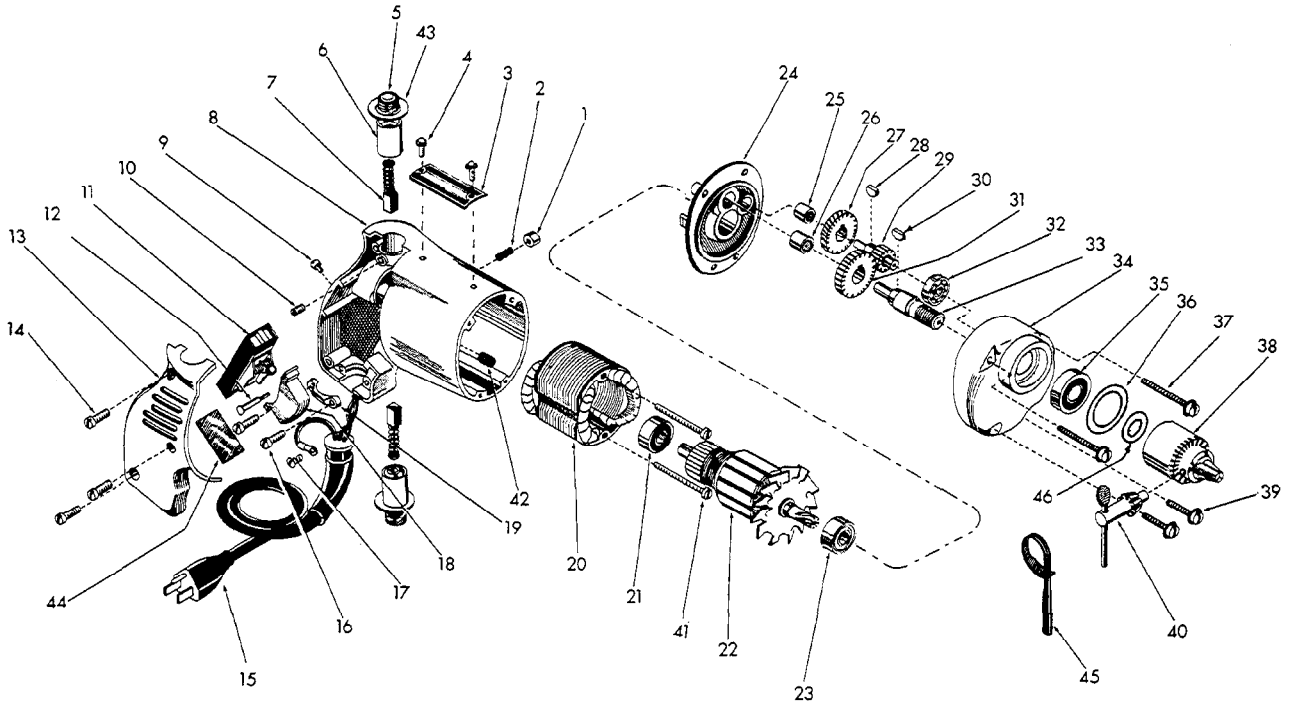


FIG.	PART NO.	DESCRIPTION OF PART	NO.REQ.	FIG.	PART NO.	DESCRIPTION OF PART	NO.REQ.
1	42-42-0061	Trigger Lock Button		24	28-28-0221	Diaphragm	
2	40-50-1200	Trigger Lock Spring		25	02-50-1210	Needle Bearing	
★ 3	12-99-0020	Name Plate		26	02-50-1640	Needle Bearing	
4	06-85-0200	Name Plate Screw	(2)	27	32-40-1121	Intermediate Gear	
5	23-44-0020	Brush Retaining Cap	(2)	28	06-42-0400	Woodruff Key	
6	22-22-0050	Brush Holder Assembly	(2)	29	36-66-1551	Intermediate Pinion Shaft	
7	22-18-0090	Carbon Brush Assembly	(2)	30	06-42-0800	Woodruff Key	
8	28-50-4447	Motor Hsg. (Inc. Fig. Nos. 1, 2, 12, 13, 14 & 42)		31	32-75-1361	Spindle Gear	
9	06-81-5800	6-32 x 5/16 Fil. Hd. Sems		32	02-04-0640	Intermediate Shaft Ball Bearing	
10	06-83-2430	10-32 x 1/4 Skt. Hd. Set Screw	(2)	33	38-50-1051	Spindle	
11	23-66-0280	Switch		★ 34	28-14-0363	Gear Case	
12	06-97-1800	Switch Lock Washers	(4)	35	02-04-1020	Ball Bearing	
13	44-70-0071	Trigger Lock Shaft		★ 36	34-80-1400	Retaining Ring	(2)
14	28-20-3002	Handle Cover		38	48-66-0500	Chuck	
15	06-81-6150	8-32 x 1/2 Fil. Hd. Sems	(3)	★ 39	06-81-6350	8-32 x 1 Fil. Hd. Sems	(2)
16	22-64-0170	Cord Set		40	48-66-3240	Chuck Key	
17	06-81-6150	8-32 x 1/2 Fil Hd. Sems	(2)	41	06-81-5950	6-32 x 1-7/8 Fil. Hd. Screws	(2)
18	06-81-8625	Ground Screw		42	45-30-0060	Ball Bearing Ret. Slug	
19	31-92-0102	Switch Trigger		★ 43	23-86-0105	Insulating Washer	(2)
20	28-17-0400	Cord Clamp		44	23-16-0265	Switch Insulator	
21	18-22-1030	Field		45	48-66-4040	Key Holder	
22	02-04-0740	Ball Bearing		★ 46	45-88-0080	Chuck Washer	
23	16-22-1110	Armature Assembly					
	02-04-0740	Ball Bearing					