



SERVICE PARTS LIST

1/4" PISTOL DRILL

Catalog No. 0181

Starting Serial No. **393-2118**

Specify Catalog and Serial No. when ordering parts

BUL. 54-06-1304

REVISED BUL. 54-06-1303 DATE Sept. '74

WIRING INSTRUCTIONS 58-01-0646

2500 R.P.M.

FOR 230V TOOL USE:
 22-18-0375 CARBON BRUSH
 18-26-1121 FIELD
 16-26-1251 ARMATURE
 22-64-2665 CORD SET

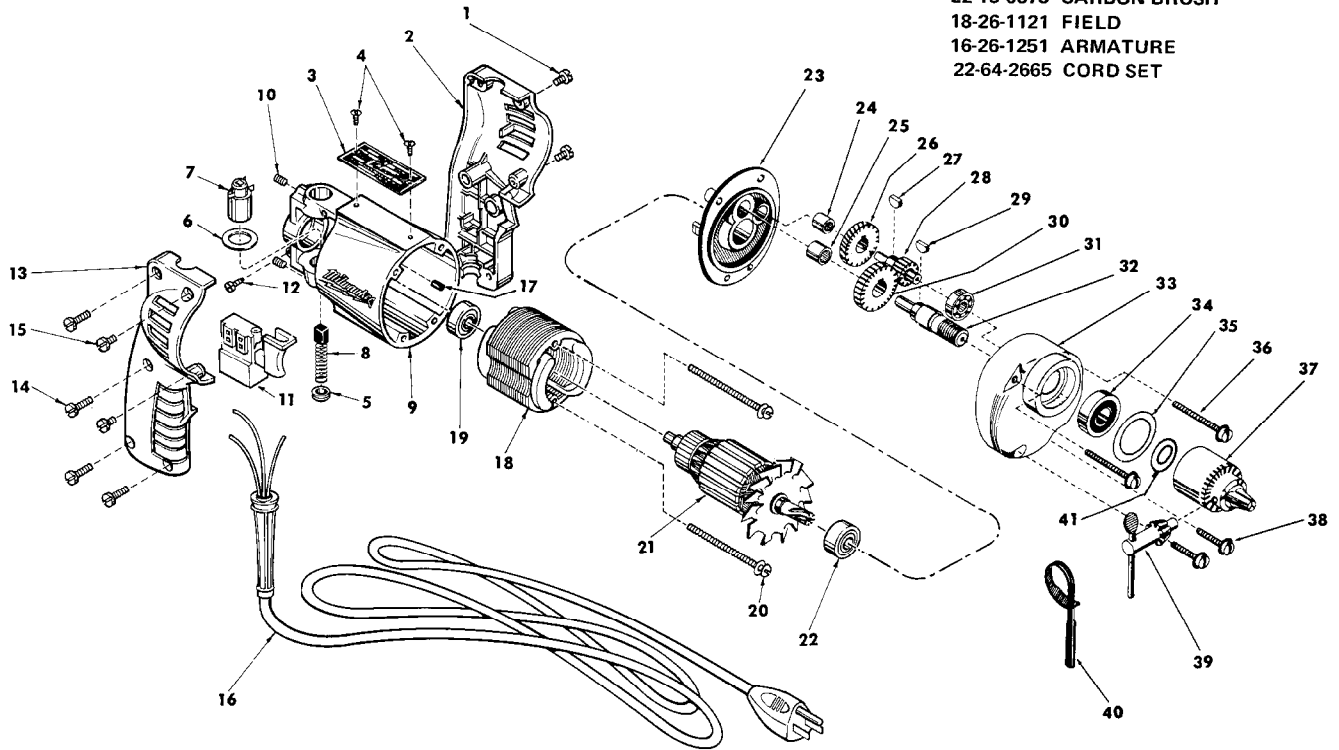


FIG.	PART NO.	DESCRIPTION	NO. REQ.	FIG.	PART NO.	DESCRIPTION	NO. REQ.
	1	8-32x3/8 Pan Hd. Screw	(2)	22	02-04-0880	Ball Bearing	(1)
★	2	L.H. Handle Half	(1)	23	28-28-0221	Diaphragm	(1)
	3	Nameplate Blank	(1)	24	02-50-1210	Needle Bearing	(1)
	4	Nameplate Screw	(2)	25	02-50-1640	Needle Bearing	(1)
	5	Brush Retaining Cap	(2)	26	32-40-1041	Intermediate Gear	(1)
	6	Insulating Washer	(2)	27	06-42-0400	Woodruff Key	(1)
	7	Brush Holder Assy.	(2)	28	36-66-1601	Intermediate Pinion Shaft	(1)
★	8	Carbon Brush Assy.	(2)	29	06-42-0800	Woodruff Key	(1)
	9	Motor Housing (Incl. Fig. No. 17)	(1)	30	32-75-1461	Spindle Gear	(1)
	10	10-32x1/4 Soc. Hd. Set Screw	(2)	31	02-04-0640	Ball Bearing	(1)
★	11	Switch	(1)	32	38-50-1051	Spindle	(1)
	12	Ground Screw	(1)	33	28-14-0363	Gear Case	(1)
★	13	R.H. Handle Half	(1)	34	02-04-1020	Ball Bearing	(1)
	14	8-32x3/4 Pan Hd. Screw	(4)	35	34-80-1400	Retaining Ring	(1)
	15	8-32x3/8 Pan Hd. Screw	(2)	36	06-81-6575	8-32x1-5/8 Fil. Hd. Sems	(2)
★	16	Cord Set	(1)	37	48-66-0260	Chuck	(1)
	17	Ball Bearing Ret. Slug	(1)	38	06-81-6350	8-32x1 Fil. Hd. Sems	(2)
	18	Field	(1)	39	48-66-3200	Chuck Key	(1)
	19	Ball Bearing	(1)	40	48-66-4080	Key Holder	(1)
	20	6-32x1-7/8 Fil. Hd. Screw	(2)	41	45-88-0080	Chuck Washer	(1)
	21	Armature Assy.	(1)	★ 42	12-98-7081	Caution Plate (Not Shown)	(1)